

Global Spatial Data Infrastructure Latin America and the Caribbean Newsletter

SDI-LAC

November 2009

Vol. 6, No. 11

Spatial Data Infrastructure-Latin America and the Caribbean (SDI-LAC) is a regional, monthly, and free, electronic newsletter from the [Global Spatial Data Infrastructure Association](#) (GSDI). It focuses on aspects related with Spatial Data Infrastructure, and on GIS, remote sensing, and data management issues, related with SDI in Latin America and the Caribbean. It aims to raise awareness, provide useful information to strengthen national SDI initiatives, and support synchronization of regional efforts.



[GSDI Definition](#)

The [Pan-American Institute of Geography and History](#) (PAIGH), member organization of GSDI, and the [Permanent Committee on Geospatial Data Infrastructure for the Americas](#) (PC-IDEA), promote SDI development in the region. The newsletter is prepared by PAIGH for GSDI.

[Message from the Editor](#)

[Input to this Issue](#)

[SDI News, Links, Papers, Presentations](#)

[Articles and Publications of the Month](#)

[Geospatial Research and Applications](#)

[GIS Tools, Software, Data](#)

[Training Opportunities](#)

[Funding Opportunities, Awards, Support](#)

[Employment Opportunities](#)

[Other](#)

[Americas: Conferences, SDI Events](#)



Message from the Editor

Now, SDI-LAC Newsletter is available in Portuguese! Portuguese Translation of SDI-LAC is possible thanks to Eduardo Freitas-Oliveira, a cartographic engineer, MSc in GIS, editor of MundoGEO Web Portal and InfoGEO Magazine.

Due to an increasing volume of information on events, the respective section will be restricted to those events taking place in the Americas. However, for "The Rest of the World: Conferences, SDI Events", please find a link to upcoming events of global or major international interest in GSDI webpage at: <http://www.gsdi.org/events/upcnf.asp>

We kindly inform that SDI-LAC Newsletter is taking correspondent members in each country of the LAC region. Next issues will include their contributions. If you would like to become a correspondent for your country please contact Nancy Aguirre cnaguirre@ipgh.org. In principle the only requirement is that you are an active member in the Spatial Data Infrastructure activities of your country.

If you have news or information related to GIS, remote sensing, and Spatial Data Infrastructure that you would like to highlight (e.g., projects, conferences, workshop announcements, publications, reports, websites of interest, etc.), kindly send them in. We would be happy to include them in the newsletter. We also encourage you to send to the editor your comments and suggestions for the continuous improvement of SDI-LAC Newsletter. **PLEASE share this newsletter with colleagues who may find the information useful, and ideally they will subscribe themselves.**

Back issues of the newsletter are at the GSDI website: <http://www.gsdi.org/newsletters.asp>

Editor, Nancy Aguirre, Pan-American Institute of Geography and History (PAIGH), <http://www.ipgh.org>, cnaguirre@ipgh.org

SDI-LAC Newsletter



Vol. 6, No.11

Global Spatial Data Infrastructure Latin America and the Caribbean Newsletter

Input to this Issue

Thank you for their contributions to this issue of the SDI-LAC newsletter to:

Marc Armstrong	Professor and CLAS Collegiate Fellow, Chair, Department of Geography, University of Iowa, USA
Santiago Borrero	Secretary General, Pan-American Institute of Geography and History, PAIGH, Mexico
Arturo Brun-Martinez	Architect, Bogota, Colombia
Craig Duncan	UNISDR, Information Management Unit, Geneva, Switzerland
Angel Massiris	Director, Doctoral Program in Geography IGAC-UPTC, Colombia
Beniamino Murgante	Department of Engineering, University of "Studi della Basilicata", Potenza, Italy
Iñigo Nadal	Director, Ibero-American Journal for Territorial Planning and Urbanism, Madrid, Spain
Amanda Neilson	Marketing Assistant, Corporate Marketing, CARIS, New Brunswick, Canada
Patricia Solis	Director of Outreach and Strategic Initiatives, Association of American Geographers, Washington, DC, USA
Chaowei Yang	Co-Director, Joint Center for Intelligent Spatial Computing (CISC), Associate Professor, Geography and Geoinformation Sciences, College of Science, George Mason University, Fairfax, VA, USA
Kenneth Young	Chair and Professor, Department of Geography and the Environment, University of Texas at Austin, USA

[\(Back to Top\)](#)

SDI News, Links, Papers, Presentations

GSDI in the News

Source: <http://unsdihu.blogspot.com/>

[International Geospatial Society \(IGS\) as individual membership arm of the GSDI Association](#)

There is a new look for the GSDI Association web site at <http://gsdi.org> This portal is entry point not only for members and visitors to the GSDI Association website but also for members of and interested visitors in GSDI's new individual membership arm, the International Geospatial Society as well.

[HUNAGI provided information on GSDI L&SE Com project as contribution to the discussion related to UNSDI](#)

During the 10th UNSDI Plenary Meeting, the Hungarian Association for Geo-Information (HUNAGI) representative made the following intervention: "The GSDI Legal & Socio-economics Committee lead by Roger Longhorn is building up a repository on socio-economic impact analysis of SDIs elaborated anywhere on the world which might be for the interest of the UN SDI experts as well."

Implementing GEOSS

Source: GEO News (Issue #5, 8 October 2009)



Over the past year, GEONETCast Americas has been actively expanding its user base through user-engagement and training activities. From July through October 2009, GEONETCast Americas specialists from the US National Oceanographic and Atmospheric Administration (NOAA), Brazil's National Institute for Space Research (in Portuguese INPE), and Panama's Water Center for the Humid Tropics of Latin America (CATHALAC) briefed new potential users on the system, its applications, and existing and potential product suites. This took place through a series of workshops sponsored by CATHALAC and the Mesoamerican Visualization and Monitoring System (SERVIR) program in Costa

Global Spatial Data Infrastructure Latin America and the Caribbean Newsletter

Rica, the Dominican Republic, El Salvador, Guatemala and Nicaragua. The workshops focused on educating multidisciplinary groups from environmental, disaster-management, weather and academic agencies in the use of satellite information for disaster management. GEONETCast Americas specialists offered training on the technical capabilities of the system. They also worked with participants to conduct in-depth requirements to determine the precise information needs of the various constituencies represented. These assessments are already being used to modify the GEONETCast Americas product suite to better serve user needs. For more information, see <http://geonetcastericas.noaa.gov>.

[SNIEG creates Specialized Technical Committees, Mexico](http://www.snieg.mx/)

Source: <http://www.snieg.mx/>



Based on the agreements registered by the Board of Governors of the National Institute of Statistics and Geography (in Spanish INEGI) during its fifth and sixth sessions, the establishment of Specialized Technical Committees affiliated to the following National Information Subsystems were approved: Demography and Social issues, Economy, Geography and the Environment and Government, Public Safety and Justice Administration. Corresponding information may be found at the section on Specialized Technical Committees of this website.

[New Look of National Geospatial Portal IDERC, Cuba](http://www.iderc.co.cu/)

Source: <http://www.iderc.co.cu/>



The National Geospatial Portal or GeoPortal is a national access point to geographical information available in the Spatial Data Infrastructure of the Republic of Cuba (IDERC). Fundamental data provided so far include: Political-administrative Distribution, Hydrography, Urban and Settlement points, Elevations, Transportation, and Geographical Names. First GeoPortal services included a gazetteer that is accessible through interactive maps, and, the Statistical Yearbook of Cuba's Population Maps that were published in 2003. The GeoPortal was launched on November 30, 2004 on an experimental basis, and now it provides a renewed look. For more information please visit this website at: <http://www.iderc.co.cu/>

Global Spatial Data Infrastructure Latin America and the Caribbean Newsletter

[Review of Activities LICJ, Jamaica](#)

Source: <http://www.licj.org.jm/>



Review of 2009 activities of the Land Information Council of Jamaica (LICJ) will be held on November 26, on a venue to be announced. For more information please visit: http://www.licj.org.jm/licj_meeting_schedule.aspx#

[New additions to IDEG Portal, Guatemala](#)

Source: <http://ide.segeplan.gob.gt/>

Web Portal of the Spatial Data Infrastructure of Guatemala (IDEG) has recently added new links to WMS and WFS services, and to videos showing how to connect WMS layers to any GIS client. For more information please visit: <http://ide.segeplan.gob.gt/>

[SNIT's Inter-ministerial Coordination Technical Committee Meeting, Chile](#)

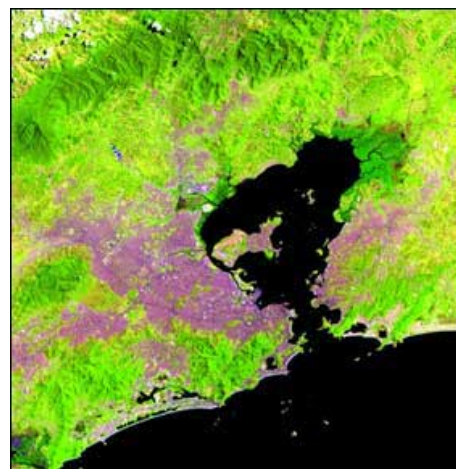
Source: <http://www.snit.cl/>

During this meeting, chaired by the Executive Secretary of SNIT, Cristian Aqueveque, representatives of seven Thematic Areas gave a complete overview of activities developed by each of these groups during year 2009, including some issues that remain to be addressed. The meeting was also attended by the Deputy Director of the National Statistics Institute (in Spanish INE), Orion Aramayo, who along with congratulating SNIT's progresses since its inception, expressed the need for actively participating and coordinating with SNIT, activities that are required for the next Population and Housing Census to be held in 2012. A set of agreements were also established during this meeting. Among those is relevant the conformation of a Working Group on Methodological Design for Assessing the Public Sector Rising Demand of Satellite Images, within the framework of the Inter-ministerial Network of Satellite Image Users, which will present its results by the end of November. It was decided to incorporate the Ministry of Defense into this group.

[INPE distributes 1 million free satellite images, Brazil](#)

Source: GEO News (Issue #5, 8 October 2009)

A pioneer in the free distribution of medium-resolution satellite data, the Brazilian National Institute for Space Research (in Spanish INPE) announced on 29 September that it had exceeded the mark of one million images downloaded via its catalog at <http://www.dgi.inpe.br/CDSR/>. The free data policy adopted by INPE has provided an essential stimulus to the global trend towards free access to satellite data and images. It has also generated momentum for the implementation of the Group on Earth Observations (GEO) Data Sharing Principles. INPE started to implement the policy in June 2004 with the distribution of CBERS-2 images (China Brazil Earth Resources Satellite). Later, INPE established free access to historical images of LANDSAT satellites. Presently, the INPE Remote Sensing Data Center, located in Cachoeira Paulista (SP), is providing images from the CBERS-2 and 2B satellites as well as from the US's Landsat 1, 2, 3, 5, and 7 satellites to anyone in the world interested in accessing them. INPE recently conducted a survey to evaluate the level of satisfaction of users regarding the CBERS image quality and the number of people hired to work on satellite data. The survey results made it clear that the free distribution of satellite images has helped to greatly expand the number of Brazilians that make use of the space program.



Global Spatial Data Infrastructure Latin America and the Caribbean Newsletter

[Geometadata: Metadata International Community](#)

Source: <http://snitchile.blogspot.com/>

Geometadata is a mailing list related to metadata, that is, a set of electronic addresses used to send certain messages or announcements in Spanish related to geographic information metadata, and metadata standards and methodologies. It aims at fostering a means for distribution and consultation of metadata. Researchers and those interested on Spatial Data Infrastructures, nationally and internationally, may exchange experiences for overcoming difficulties related to the creation of metadata. For more information please log on to <http://www.rediris.es/list/info/geometadata.html>



[Students will Bring Free Technologies and Knowledge to 200 Communities, Venezuela](#)

Source: <http://www.radiomundial.com.ve/>

A group of students from the Experimental National University “Romulo Gallegos” have received their certificates on Community Facilitators for Free Software in order to promote free Information Technology (IT) for 200 communities of Venezuela. After participating and passing a course taught by representatives of the National Center for Information Technology (in Spanish CNTI), this group of young people is dedicated to multiplying knowledge about these technological tools.

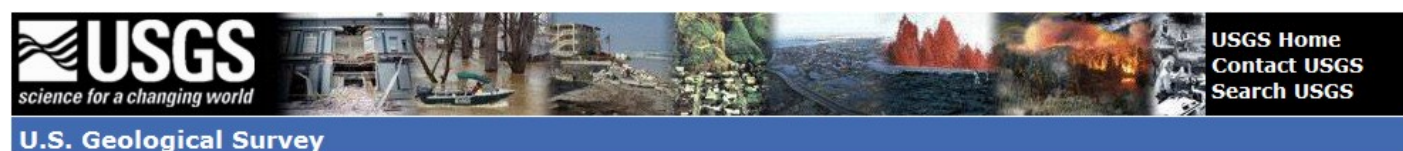
New Innovation Licenses Offer Free Access to Mapping Data, UK

Source: WALIS October 2009 eNews

A range of new licenses from the United Kingdom’s Ordnance Survey provide users with free access to a wide range of mapping data for experimentation and development. The move forms part of Ordnance Survey’s new business strategy, which aims to further promote the innovative use of geographic information. Users can now download sample areas of premium products direct from the Ordnance Survey website, while even more data –up to 10% of anywhere in the country– is available for free to those that request it. The three new licenses –entitled ‘Discover’, ‘Evaluate’ and ‘Developer’– make it easier for businesses, government agencies, social groups and entrepreneurs to experiment with Ordnance Survey data and realize the value of location-based information. Samples of 22 datasets are available, including the entire OS MasterMap product suite of topography, imagery, address and transport network layers. Web link to full article: <http://www.ordnancesurvey.co.uk/oswebsite/media/news/2009/september/innovationlicences.html>. Click [here](#) to access the new licenses and free data downloads.

[USGS Seeks Proposals to Build the National Spatial Data Infrastructure](#)

Source: <http://www.usgs.gov/>



USGS and the Federal Geographic Data Committee (FGDC) formally announced their request for proposals to support the 2010 National Spatial Data Infrastructure (NSDI) Cooperative Agreements Program (CAP). With over \$1.3 million spread across seven categories, the 2010 NSDI CAP will award an estimated 31 innovative projects in the geospatial data community. The goals of the awarded projects will be to develop partnerships and to build new and improve existing geospatial infrastructure necessary to effectively discover, access, share, manage and use geospatial assets. In 2009, NSDI CAP awarded a total of 25 projects, totaling close to \$1.3 million. One of the 2009 categories is helping States develop strategic and business plans that will support the coordination of programs, policies, technologies, and resources related to all aspects of geospatial information.

Global Spatial Data Infrastructure Latin America and the Caribbean Newsletter

[4th Ibero American Congress on Territorial and Environmental Studies \(CIETA\)](#)

Source: Iñigo Muñoz by way of Santiago Borrero

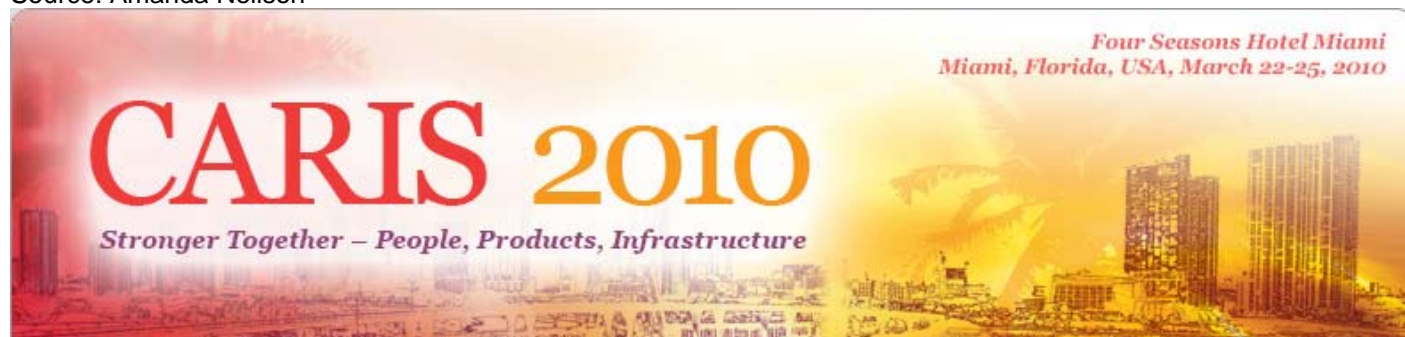


IV CONGRESO IBEROAMERICANO DE ESTUDIOS TERRITORIALES Y AMBIENTALES

The 4th Ibero-American Congress on Territorial and Environmental Studies (in Spanish CIETA) will take place on May 2010 in Merida (Spain). The Congress will also feature PAIGH (Pan American Institute of Geography and History) as an Official Partner, and keynote speaker will be Santiago Borrero, Secretary General of PAIGH. For all information related with the Congress please to log on to <http://www.mappinginteractivo.com/cieta/index.asp>.

CARIS 2010

Source: Amanda Neilson



CARIS 2010: Stronger Together - People, Products, Infrastructure will take place on March 22-25, 2010, in Miami, Florida, United States. CARIS 2010 in Miami will be the largest gathering of CARIS users, delivering four intense days of information sharing on marine and hydrographic geospatial technologies. Through a program of hands-on Training Camps, candid User Group Meetings, insightful user presentations and access to CARIS technical specialists. CARIS 2010 will address the interests of every user. Please visit www.caris.com/caris2010 for details.

GEOSS in the Americas Forum on Coastal Zones

Source: GEO News (Issue #5, 8 October 2009)



In conjunction with the 2009 GEO-VI Plenary, the United States Group on Earth Observations (USGEO) and the Canadian Group on Earth Observations (CGEO) are organizing a GEOSS in the Americas forum on Coastal Zone Management. The forum, planned in cooperation with the GEO Coastal Zone Community of Practice, will take place at the Embassy of Canada in Washington, 501 Pennsylvania Ave. NW, Washington, D.C., on Friday, November 20 from 8:30am to 1:00pm. Those wishing to participate in this forum are invited to register at <http://www.cgeo.gc.ca>

Global Spatial Data Infrastructure Latin America and the Caribbean Newsletter

1st Latin American and Caribbean gvSIG Users Working Days: Papers and articles

Source: gvSIG Communication

Now available presentations and papers presented at the 1st Latin America and Caribbean gvSIG Users Working Days [1], which under the slogan 'cooperation to grow' were attended by approximately 250 people, from more than 10 countries. Other remaining papers will be published in short. [1] <https://gvSIG.org/web/community/events/jornadas-lac/2009/ponencias>

Fifth International Workshop on "Geographical Analysis, Urban Modeling, Spatial Statistics"

Source: Beniamino Murgante



The Fifth International Workshop on "Geographical Analysis, Urban Modeling, Spatial Statistics" GEOG-AN-MOD 10 http://www.unibas.it/utenti/murgante/geog_an_mod_10/index.html will be held in conjunction with the 2010 International Conference on Computational Science and its Applications (ICCSA 2010), on March 23-26, 2010, at Kyushu Sangyo University, Fukuoka, Japan <http://www.iccsa.org/>. During the past decades the main problem of geographical analysis was the lack of spatial data availability. Today the wide diffusion of electronic devices containing geo-referenced information generates a great production of spatial data. Volunteered geographic information activities (e.g. Wikimapia, OpenStreetMap), public initiatives (e.g. Spatial Data Infrastructures, Geo-portals) and private projects (e.g. Google Earth, Microsoft Virtual Earth, etc.) produced an overabundance of spatial data which in many cases does not help the efficiency of decision processes. Increasing geographical data availability has not been fully coupled by an increase of knowledge to support spatial decisions. Old geographical issues can find an answer thanks to new methods and instruments, while new issues are developing, challenging the researchers for new solutions. This workshop aims at contributing to the development of new techniques and methods to improve the process of knowledge acquisition. Papers should be submitted at: <http://ess.iccsa.org/>. For formatting information, see the publisher's web site (<http://www.springer.de/comp/lncs/authors.html>). Deadline for full paper submission: **10 November, 2009**.

C&G especial issue for polar science & CI

Source: Chaowei Yang

Call for abstracts/papers for the Special Issue of "Geospatial Cyberinfrastructure for Polar Science" to be published with *Computers & Geosciences*. To capture recent developments in Geospatial Cyberinfrastructure (GCI) for Polar Science research, we invite submissions to a special issue of *Computers & Geosciences*. The special issue will feature "research on novel computer & IT methods in the polar sciences, such as spatial analysis, modeling, simulation, statistical and artificial intelligence methods, e-science, geoinformatics, geomatics, geocomputation, image analysis, remote sensing, and geographical information science." Topics include but are not limited to: GCI and polar science; Polar science and climate change using cyberinfrastructure; Polar geological science using cyberinfrastructure; Analytical and modeling techniques for polar studies; Computing and observations for polar studies; and Intelligent computing methods for polar studies. We invite abstracts up to about 500 words in length that include introduction, methodology, experiments, contribution, and references (up to 4) of a paper. The following are relevant due dates. **November 30, 2009**, abstract submissions due; **December 15, 2009**, paper submissions based on abstract review due; Mar. 30, 2010, full paper due for peer review; Jul. 30, 2010, decision for paper acceptance. Published in an early 2011 issue of *Computers & Geosciences*. Inquiries regarding the special issue are welcomed and may be addressed to any of the guest editors: Chaowei Yang (cyang3@gmu.edu), Joint Center for Intelligent Spatial Computing, College of

Global Spatial Data Infrastructure Latin America and the Caribbean Newsletter

Science, George Mason University, Fairfax, VA, 22030, USA; Douglas D. Nebert (ddnebert@fgdc.gov), Federal Geographic Data Committee, Reston, VA, USA; Fraser Taylor (Fraser_Taylor@carleton.ca), Carleton University, 1125 Colonel By Drive, Ottawa, ON, K1S 5B6 Canada

GEOSS Interoperability Pilot Completed with OGC Leadership

Source: GEOSS Interoperability Pilot Completed with OGC Leadership

GEOSS Architecture Implementation Pilot, Phase 2(AIP-2) has been completed with leadership by the Open Geospatial Consortium (OGC®). The AIP-2 Pilot activity, which began in September 2008, is a project of the GEO (Group on Earth Observations) AR-09-01b Task Team. AIP-1 demonstrated GEO Portal and Clearinghouse solutions. AIP-2 established "operational, research and technical exemplars", services that support several of the GEOSS Societal Benefit Areas (SBAs): Disaster Management, Biodiversity and Climate Change, Air Quality and Health, and Renewable Energy. AIP-2 Engineering Reports are available (<http://www.ogcnetwork.net/AIP2ERs>) for use by organizations in and outside of GEOSS. Videos of demonstrations developed in AIP-2 for six Communities of Practice are posted on the OGC website at <http://www.ogcnetwork.net/pub/ogcnetwork/GEOSS/AIP2/index.html>. An AIP-2 summary report is available at <http://www.ogcnetwork.net/AIP2ERs#summary>. For additional information and to learn how your organization can become involved in a planned AIP-3, see <http://www.ogcnetwork.net/Alpilot> or contact George Percivall, percivall@opengeospatial.org. For information about this announcement, contact: Sam Bacharach, Executive Director, Outreach and Community Adoption, Open Geospatial Consortium, sbacharach@opengeospatial.org

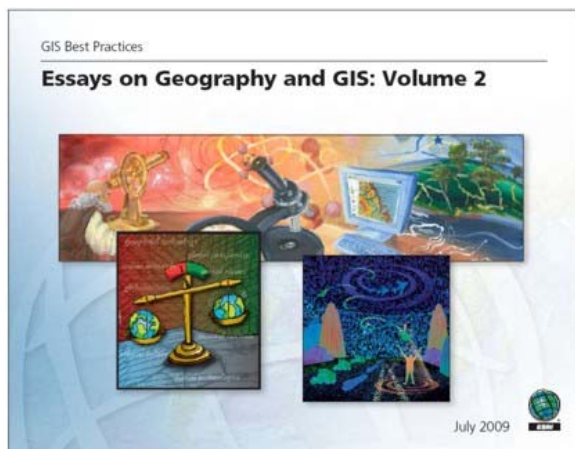


[\(Back to Top\)](#)

Articles and Publications of the Month

GIS E-Book Serves as Guidebook to the Future

Source: <http://www.cadalyst.com/>



ESRI's latest collection of essays explores the application of GIS to an array of challenges, as well as the ongoing evolution of the technology. The PDF, which can be [downloaded from ESRI's website](http://www.esri.com/showcase/best-practices/index.html) (<http://www.esri.com/showcase/best-practices/index.html>) at no charge, compiles a dozen articles from recent issues of the company's *ArcNews* magazine. Volume 2 is likely to be popular; ESRI claims that more than 30,000 people viewed the previous volume over the past year. Volume 2 opens with Jack Dangermond's argument for crafting our built environment in accord with the natural environment. In "Implementing Geographic Information Technologies Ethically," Harlan J. Onsrud discusses a common topic -control of information resources for privacy and revenue purposes- from an uncommon perspective. Onsrud opines that legal means of exerting that control are not well suited to rapidly changing technologies and social conditions. Instead of choosing law as

our primary guide for geospatial design and implementation decisions, he argues, we should rely on ethical values. "Not only is this the right thing to do, but geospatial technology designs and information system implementations that are morally defensible are also far more likely to be mutually supported internationally by governments and to survive and thrive in the long term within the global marketplace." [The complete article by Harland Onsrud is found at <http://www.esri.com/library/bestpractices/essays-on-geography-gis-vol2.pdf> p.15-28]

Global Spatial Data Infrastructure Latin America and the Caribbean Newsletter

[Social Tenure Domain Model \(STDM\): A Pro-Poor Land Rights Recording System](#)

Published by *GIM International*, October 5, 2009.

By Christiaan Lemmen, ITC, Clarissa Augustinus, UN-Habitat, and Peter van Oosterom, Delft University of Technology, The Netherlands

Excerpts from original article:

Land Administration: The STDM is a terminology for land administration and is as simple as possible in order to be useful in practice. This helps to combine and understand land administration information from different sources in a coherent way. The terminology allows a shared description of different practices and procedures in various customary/informal areas or jurisdictions, but is not meant to have any legal implications or to interfere with national land administration laws. The STDM is recognized by UN-Habitat as a pro-poor land tool. In the technical field, it has been generally acknowledged that there is an insufficient focus on pro-poor tools and that the STDM is needed to fill an existing technical gap.

Next Step: The STDM development activity has thus far generated conceptual, functional and technical designs. The next logical step is software development, starting with a prototype and testing this through pilot projects in countries which have slums, customary tenure, overlapping claims and non-polygon spatial units. The prototype is under development at the International Institute for Geo-Information Science and Earth Observation (ITC) in close co-operation with Global Land Tool Network/UN-Habitat and FIG [The complete article may be found at http://www.gim-international.com/issues/articles/id1430-The_Social_Tenure_Domain_Model.html]



[\(Back to Top\)](#)

Geospatial Research and Applications

[Managing Risks in the Electricity Sector of Ecuador](#)

Source: <http://www.geoportaligm.gov.ec>

The Ministry of Electricity and Renewable Energy of Ecuador offers to the general public the "Electrical Infrastructure Physical Vulnerability to Natural Hazards Assessment System" that aims to organize, plan, evaluate, coordinate and assess issues related to natural, anthropogenic, technological, and biological (health) hazards in all coverage areas of the Electricity Sector, and to reduce adverse impacts of different hazard types. For more information please log on to: http://www.meer.gov.ec/Meer/portal_meer/internaView.htm?code=1040&template=meer.internas

[Information Technology Applied to Sugar Industry in Mexico](#)

Source: Arturo Brun-Martinez

The National Information System of Sugar Industry of Mexico, on whose activities depend 164 thousand producers in 15 states, is intended towards having a modern, profitable and able sector to overcome the global competition. Francisco Lopez Tostado, undersecretary of Agriculture of SAGARPA (Office of Agriculture, Livestock, Rural development, Fishing and Food Security), explained the latter during inauguration of the Information Systems Workshop for Strengthening the National Sugarcane Sector. During the workshop it was explained how the National Information System of the Sugar Industry (in Spanish SIAZUCAR), uses modern research techniques, satellite imagery, automated meteorological equipment, and information dissemination mechanisms that allow everyone involved in making better business decisions. Updated information, said the Director General of the SIAP (Agriculture, Food Security and Fishing Information Service), will help improve sugarcane soil fertility, climatic management of crops, efficient models for sugarcane supply, satellite monitoring of plantations, production monitoring in field and factory, and market price performance.

Global Spatial Data Infrastructure Latin America and the Caribbean Newsletter

[Government Create Map Portal on Traffic Accidents in the Greater Santiago](#)

Source: <http://www.snit.cl/>

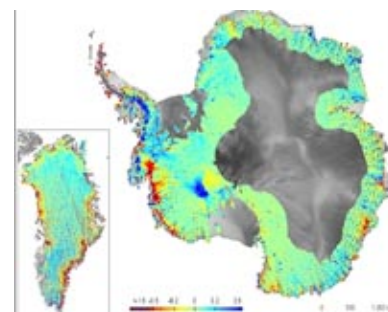


This tool, which allows field visualization, plus deaths and injuries statistics of places where more traffic accidents occur in each commune, will be housed in the CONASET (National Commission on Transportation Security) website, of the Ministry of Transportation and Telecommunications. The website will reveal statistical information, trends, and georeferenced intersections of 34 city districts where traffic accidents are concentrated. It is directed for both specialized agencies and the public at large. To access the CONASET Map Portal please log on to the following link: <http://hosting.snit.cl/conaset>

[NASA Ice Satellite Maps Profound Polar Thinning](#)

Source: <http://www.terradaily.com/>

Researchers have used the National Aeronautical and Space Administration (NASA) Ice, Cloud and Land Elevation Satellite (ICESat) to compose the most comprehensive picture of changing glaciers along the coast of the Greenland and Antarctic ice sheets. The new elevation maps show that all latitudes of the Greenland ice sheet are affected by dynamic thinning - the loss of ice due to accelerated ice flow to the ocean. The maps also show surprising, extensive thinning in Antarctica, affecting the ice sheet far inland. The study, led by Hamish Pritchard of the British Antarctic Survey in Cambridge, England, was published September 24 in *Nature*. The maps confirm that the profound ice sheet thinning of recent years stems from fast-flowing glaciers that empty into the sea.



[Map of the future revealed, UK](#)

Source: <http://www.ordnancesurvey.co.uk/>

An incredible three-dimensional map made from 700 million individual points of light is the latest step in a geography revolution unfolding on the south coast. Ordnance Survey has been trialing the use of incredibly accurate lasers to create a spectacularly detailed map that could change the way the national mapping agency works and transform the way we think of maps forever. The trials have been carried out in Bournemouth, with the town centre captured in startling detail. Experts say the technology could revolutionize the future of personal navigation, tourism and the planning process as well as aiding architects, and the emergency and security services. A video is also included in this article.



[Spatial Planning and Climate Change Adaptation in Coastal Regions: The Case of Vietnam](#)

Source: <http://www.fig.net/>

The FIG Article of the Month in October 2009 is "Spatial Planning and Climate Change Adaptation in Coastal Regions: The Case of Vietnam". It is written by Dr. Isaac Boateng from the University of Portsmouth, United Kingdom. He is also Vice Chair of Administration of FIG Commission 8. His paper has been prepared for presentation at the 7th FIG Regional Conference in Hanoi, Vietnam, 19-22 October 2009 and offers an interesting view to one of the key themes of the conference. This paper explores the potential impacts of climate change and the vulnerability of the coast of Vietnam based upon geodetic information and the present coastal development. It then discusses how sustainable

Global Spatial Data Infrastructure Latin America and the Caribbean Newsletter

spatial planning approaches could be used to reduce vulnerability to climate change and ensure sustainable coastal adaptation of Vietnam's coastal zone. The paper revealed that sustainable and successful adaptation to climate change could be achieved if it is perceived as a process similar to spatial planning. It should be planned, implemented well in advance, monitored and evaluated before the occurrence of a natural disaster or an environmental change [The complete article may be found at http://www.fig.net/pub/monthly_articles/october_2009/october_2009_boateng.html]

[\(Back to Top\)](#)

GIS Tools, Software, Data

[IDEE-Developer's Corner, Spain](#)

Source: <http://www.idee.es/>

This section provides technical information aimed at developers of Geographic Information Web Services. It is available under the Spatial Data Infrastructure of Spain (in Spanish IDEE) portal. You may use it for deploying applications and for producing value added services. For each service a brief summary is provided which includes the service characteristics, and examples of the various request types supported, for example GET and POST requests.

[ITC's GEONETCast toolbox](#)

Source: <http://www.unsdi.nl/>



ITC International Institute for Geo-Information Science and Earth Observation

The International Institute for Geo-information Science & Earth Observation (ITC) has developed an integrated toolbox for retrieving data via GEONETCast and then managing and analyzing these data using the ILWIS opensource GIS package. ITC supports this toolbox by providing education and training on the operational use of the GEONETCast system. It also conducts research aimed at developing applications for the various GEO (Group on Earth Observation) societal benefit areas. GEONETCast was established by GEO to enable users without good access to high-speed internet to benefit from GEOSS (Global Earth Observation System of Systems). Its four communications satellites transmit data to low-cost receiving stations maintained by the users. The GEO capacity-building strategy specifically identifies GEONETCast as a significant technology for advancing the capacity of governments and institutions to explore Earth observations more effectively; it also sees the system as an efficient means for exchanging and distributing training resources to a larger number of individuals. The ITC software toolbox is based on opensource standards and enables easy access to, and management of, GEONETCast data streams from various satellite and in-situ products and services. It also supports their efficient processing using the Integrated Land and Water Information System (ILWIS) or other geospatial information systems. The initiative represents a concrete action for GEO capacity building and seeks to expand the GEOSS user base and to build regional networks. More info: <http://bit.ly/10FQmO>

[OSGeo Virtual Machine - access free GIS software](#)

Source: <http://www.geoconnexion.com/>

Arramagong is a self-contained live DVD and Virtual Machine, based on XUbuntu and GISVM, that allows you to try a wide variety of open source geospatial software without installing anything. It is composed entirely of free software, allowing it to be freely distributed, duplicated and passed around. It includes a stack of popular GeoSpatial Open Source Applications, and can now be viewed from <http://click2try.com> from within your web browser! All you need to do is to open the webpage in the link at <http://www.click2try.com/catalog/Web-Development/Geospatial/Arramagong-GISVM/details> and follow these instructions.



Global Spatial Data Infrastructure Latin America and the Caribbean Newsletter

[ESRI Brings GIS to the Public with Mapping for Everyone Web Site](#)

Source: <http://www.esri.com/>



ESRI has launched a Web site that allows users to create maps for free with simple Geographic Information System (GIS) tools. Called [Mapping for Everyone](#), the Web site includes tools that cover a range of mapping needs, such as embedding an interactive demographic map into a Web site, creating custom applications using Web Mapping APIs, and using a 2D/3D globe viewer on the desktop.

[Cartagen](#)

Source: Arturo Brun-Martinez

Cartagen is a free and open source software (<http://cartagen.org>); it is a vector-based, client-side framework for rendering maps in native HTML 5. Written in JavaScript, it uses the new Canvas element to load mapping data from various sources, including OpenStreetMap. In short, Cartagen lets you make beautiful, customized maps with a simple stylesheet. Maps are styled with Geographic Style Sheets (GSS), a cascading stylesheet specification for geospatial information – a decision which leverages literacy in CSS to make map styling more accessible. However, GSS is a scripting language as well, making Cartagen an ideal framework for mapping dynamic data. <http://cartagen.org/>



is a demonstration of the latest version of Cartagen – use it to experiment with the technology, explore the world, and create your own maps! In addition, you can download Cartagen and use it on your own website, or read and change the code to fit your needs. More at [Getting Started](#).

[Netherlands: New Open Access Website Encourages Exchange of Research Data](#)

Source: <http://www.resourceshelf.com/>

SURF, the higher education and research partnership for network services and ICT in the Netherlands, is launching the website www.openaccess.nl. The website has been developed on behalf of the whole higher education sector and links up with international Open Access week (19 to 23 October 2009). The Open Access website provides structured information about Open Access to research results and the advantages that Open Access has. Practical examples are used to illustrate the possibilities opened up by the Internet for innovations in scholarly communication. The website provides researchers with information about how Open Access can give their work a larger potential audience. Openaccess.nl shows the options that each discipline has for making research results openly accessible.

Global Spatial Data Infrastructure Latin America and the Caribbean Newsletter

[Introducing Google Building Maker](#)

Source: Arturo Brun-Martinez



How do we create a three-dimensional model of every built structure on Earth? How do we make sure it's accurate, that it stays current and that it's useful to everyone who might want to use it? One of the best ways to get a big project done -and done well- is to open it up to the world. As such, Google Building Maker is a fun and simple tool for creating buildings for Google Earth.

[\(Back to Top\)](#)

Training Opportunities

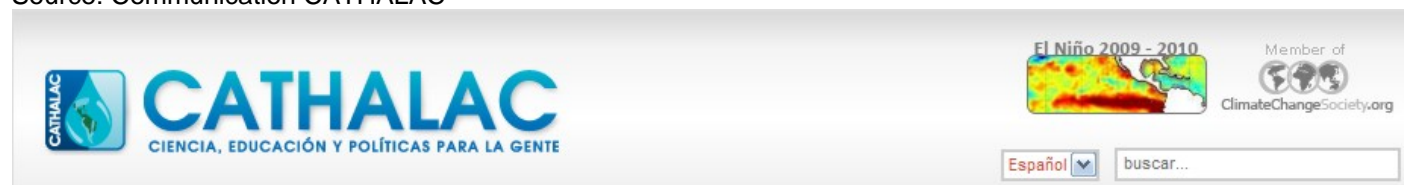
[Call for New Doctoral Program in Geography IGAC-UPTC, Colombia](#)

Source: Santiago Borrero and Angel Massiris

This new doctoral program in geography is developed through an agreement between the Pedagogical and Technological University of Colombia (in Spanish UPTC) and the Geographic Institute "Agustin Codazzi" (in Spanish IGAC). The program was recently approved by the Ministry of National Education (MEN), by way of resolution 2504 of May 6, 2009. SNIES Code 54620. The IGAC and UPTC invite professionals holding a master degree, to participate in the first class of the doctoral program in geography, in the following research areas: Society and Territory, Environmental Geography, Planning and Territorial Development, and Geomatics applied to the solution of geographical problems. The program includes 80 credits to be developed during 3 years, divided into six academic periods, two each year, each of 16 weeks. The courses and seminars will be on-site for first three academic periods. The attendance schedule is: Friday from 2 to 5 pm and Saturdays from 9 am to 12 m. and from 2 to 5 pm. Headquarters of the doctoral program in geography are the Geographic Institute "Agustin Codazzi" (IGAC) in Bogota, Colombia. Registrations are open for commencement in **February 2010**. The program has 35 Ph.D. mentors in geography from Colombia, Mexico, Cuba, Spain and Germany. For more information please contact: IGAC, Cra 30 No. 48-51, CIAF Building, Room 109. Tel (571) 3694000 or (571) 3694100 ext. 4583. Fax: (571) 3694080. Email: doctorado.geografia@uptc.edu.co You may find the Doctoral Program's brochure [here](#). You may also enroll in our Master Program in Geography If you still don't have a masters degree.. For information on the MA in Geography, please contact IGAC at: maestria@igac.gov.co.

[Diploma Course in Integrated Water Resources Management UNU/INWEH - CATHALAC](#)

Source: Communication CATHALAC



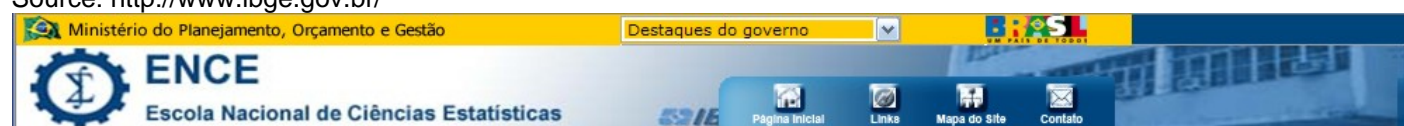
CATHALAC and the United Nations University, International Network on Water, Environment and Health (UNU/INWEH) agreed to establish and operate in CATHALAC a Water Virtual Learning Center (WVLC) of the United

Global Spatial Data Infrastructure Latin America and the Caribbean Newsletter

Nations, that would meet the needs of the Latin America and the Caribbean region. The curriculum offers a wide basic coverage of principles and practice of the IWRM giving the student knowledge on natural sciences, engineering, health, governance, public administration, social sciences, economics, resource conservation, strategic planning, as well as aspects of the program and project management. This Diploma Course is aimed at the professional staff of the various government spheres, hydroelectric companies, related to the supply and sanitation services, members of local organisms, water resources promoters and personnel interested in the opportunities and knowledge of the best water management practices. The students, who successfully complete the program, will be awarded a UNU Diploma in Integrated Water Resources Management. Deadline for registration and submission of documentation is **February 6, 2010**. To receive news about funding opportunities we urge you to register using the online system (www.cathalac.org/educacion/registro).

[Open Registration for Graduate Course on Environmental Analysis and Land Management](http://www.ibge.gov.br/)

Source: <http://www.ibge.gov.br/>



Registration for the Graduate Course on Environmental Analysis and Land Management, at the National School of Statistical Sciences (ENCE) of the Brazilian Institute of Geography and Statistics (IBGE) is now open, Registration deadline is **November 20**. The course is completely free, and is intended for professionals in the public or private sectors interested on natural resource-use planning. The call for this course is available at: www.ence.ibge.gov.br. You may register to the course by e-mail at: inscricao.especializacao@ibge.gov.br

Upcoming EBM Tool Demonstration Webinar: Participatory GIS (Nov 5)

Source: SEA-GIS Coastal and Marine GIS Distribution List

Presentation on Participatory GIS by Danielle Bamford and Chrissa Stroh of NOAA Coastal Services Center and Becky Szivak of ACE Basin NERR (**November 5, 2 pm US EST**). Participatory GIS is a practice in which local communities share their knowledge and opinions to help generate maps to inform management and decision-making. Participatory GIS fosters discussion and collaboration among stakeholders and can capture important knowledge from



underrepresented groups. This presentation will describe the use of Participatory GIS in two coastal projects: the Edisto Island Preservation Association's project to make recommendations on an update to the local county comprehensive plan and the Great Works Regional Land Trust's project to develop a strategic plan for the land trust's conservation work. The presentation will also describe new resources for coastal resource managers interested in using Participatory GIS. Register for this webinar at <https://www1.gotomeeting.com/register/132153681>

European Agencies Announce Workshop on Use of OGC Standards in Meteorology

Source: OGC Press Release



The UK Met Office, and the European Centre for Medium-Range Weather Forecasts (ECMWF) jointly announce that the 2nd Workshop on the Use of GIS/OGC (Open Geospatial Consortium) Standards in Meteorology will be held at the Conference International Centre at Meteo-France, Toulouse, France, from **23-25 November 2009**. See

Global Spatial Data Infrastructure Latin America and the Caribbean Newsletter

<http://www.meteo.fr/cic/meetings/gis-ogc/> for details. The aims of this workshop are to review applications of OGC and other standard Web services, encodings, and analytical methodologies across the meteorology community; discuss relationships between the World Meteorological Organization (WMO) and OGC; and define a roadmap for further activities of the OGC Meteorology & Oceanography Domain Working Group. The deadline for registering is **12 November 2009**. The deadline for submitting abstracts is **2 November 2009**. For more information contact: Frédéric Guillaud, Meteo-France frederic.guillaud@meteo.fr or Athina Trakas, OGC atrakas@opengeospatial.org

[Online Master's Degree and Graduate Certificate in Geographic Information Systems, University of Denver](http://www.universitycollege.denver.edu/)

Source: <http://www.universitycollege.denver.edu/>

The University of Denver's school of professional and continuing studies, University College, and the Department of Geography are partnering to offer an online Master of Science in Geographic Information Science delivered entirely online. Additionally, University College offers a certificate of advanced study in GIS both online and on-site at the University of Denver campus. For more information please log on to: <http://www.universitycollege.denver.edu/grad/inq/gis.cfm>



[\(Back to Top\)](#)

Funding Opportunities, Awards, Support

[Call for Applications to attend Institute for Integration of Research on Climate Change and Hazards in the Americas](#)

Source: Patricia Solis by way of Santiago Borrero

Anticipated impacts of climate change increase the likelihood and extremity of hazards, and when coupled with the largely unpredictable ways in which local communities may experience new or different kinds of events, the importance of supporting integration at the hemispheric scale rises to a critical level. The Institute for Integration of Research on Climate Change and Hazards in the Americas will address these topics and foster a region-wide community of scholars and practitioners. Up to 50 graduate students and post-doctoral scholars from the US and Latin America will be supported to participate in a two-week long Institute in Panama City, Panama to be held in June 2010. The Institute will offer lectures, demonstrations, technical training, group discussions, and work sessions at the advanced graduate and post-doctoral level. Participants will collectively produce a research agenda and a set of white papers, and will support development of an online knowledge and collaboration environment before, during, and after the event. The event, co-organized by the Association of American Geographers (AAG), the Pan American Institute for Geography and History (PAIGH) of the Organization of American States (OAS), the US Geological Survey (USGS), the National Communication Association (NCA), and the United Nations Environment Program Regional Office for Latin America and the Caribbean (UNEP), will take place in collaboration with the Universidad Tecnológica de Panamá and will be led by an expert interdisciplinary team of 12 lecturers from the US, Panama, Chile, Brazil, and Mexico. The desired result of the program is a clear roadmap and collaborative mechanism for developing and sharing the knowledge necessary for responding to climate change and hazards in the Americas in an integrative way, using geographic tools and methods as a research and communication framework. Funding for the Institute comes from the US Department of Energy and US National Science Foundation sponsored Pan American Advanced Studies Institute Program (NSF PASI). Graduate students, post doctoral students, or early career scientists within 6 years of receiving the PhD, and who are US citizens or permanent residents or are currently enrolled in a US university or academic institution in any field may apply to attend as US Participants. Underrepresented groups and students from Historically Black Colleges and Universities, Hispanic-



Global Spatial Data Infrastructure Latin America and the Caribbean Newsletter

serving institutions, and tribal colleges are encouraged to apply. Graduate students, post doctoral students, or early career scientists within 10 years of receiving the PhD who are citizens of and residents in any country in Latin America may apply as Regional Participants. Selected participants must attend the full two week Institute in Panama and will receive airfare, lodging, local transportation to Institute events, training materials, and some meals paid for by the program. Application forms, instructions and selection criteria are available on the website at www.aag.org/Grantsawards/pasi.html. Deadline for submissions is January 16, 2010. For questions or additional information, please contact Patricia Solis at psolis@aag.org.

Interdisciplinary Studies on Global Climate Change and the Ecology and Management of Tropical Montane Ecosystems

Source: Kenneth Young

The Pan-American Advanced Studies Institute (PASI) will bring together ecologists, ecosystem scientists, climatologists, physiologists, paleoecologists, hydrologists and others with an expertise in tropical montane ecosystems for a 8-day workshop from March 6th-14th, 2010 in the Madre de las Aguas protected region in the Cordillera Central, Dominican Republic. The PASI workshop will combine talks, labs, and field excursions with established researchers, and post-doctoral and graduate student participants.



Applicants will be selected from several criteria, including an established commitment to the field of tropical montane ecology. Pan-American Advanced Study Institutes (PASIs) are designed to disseminate cutting edge knowledge to an audience of young scientists (post-docs and graduate students) from across the Americas. All expenses including travel are covered for speakers and accepted applicants. A (PASI) funded by the National Science Foundation. The Madre de las Aguas region in Dominican Republic encompasses over 2,000 km² of pristine and managed tropical montane forest, and includes the highest point in the Caribbean, Pico Duarte (3,098 m). For more site information and publications on the region: http://landscapeecology.agsci.colostate.edu/research/tropical_ecology/tropical_ecology.html. This PASI is open to post-doctoral and graduate student scientists working in tropical mountain ecosystems. Please email your current CV including publications, a list of three references with contact information, and a 2-page letter of interest detailing your research and experience in tropical montane ecosystem to Patrick Martin at patrick.martin@colostate.edu. All participants will be required to present their research in poster sessions. Individuals from underrepresented groups are particularly encouraged to apply. The application deadline is **November 30th**, 2009. Citizens of North and South American countries and researchers working in the Neotropics will be given preference.

2009 GIS Awards Nominations Now Posted at LICJ

Source: <http://www.licj.org.jm/>

The 2009 GIS Awards Nominations of the Land Information Council of Jamaica (LICJ) are now posted: GIS Best Practice; Most Outstanding GIS Professional; Most Outstanding LICJ Member Organization; GIS Entrepreneur; and Jacqueline DaCosta Shield of Excellence. For more information please log on to: <http://www.licj.org.jm/>

The Ministry of Transport and Works receives ESRI 2009 Special Achievement Award

Source: <http://www.licj.org.jm/>

The Ministry of Transport and Works was officially awarded the Special Award in Geographic Information Systems on July 15, 2009 at the 2009 ESRI User Conference at the San Diego Convention Centre, San Diego, California. This Award is the highest Award issued to anyone involved in the GIS arena. More information [here](#).

Global Spatial Data Infrastructure Latin America and the Caribbean Newsletter

PhD Positions in Earth System Science at Clark University

Source: Kenneth Young

PhD Positions in Earth System Science Applications are invited for PhD assistantships within the Graduate School of Geography at Clark University. Assistantships cover tuition, provide an annual stipend, and include eligibility for a competitive fellowship. Clark's Earth System Science program features expertise in terrestrial ecosystems and global change, hydrology, forest ecology, biogeography, Arctic System Science, remote sensing of land cover change, landscape ecology, human dimensions, and GISci. To apply, send a completed application form and personal statement, three letters of reference, and official transcript(s) with a \$50 (application fee). For complete details see:

<http://www.clarku.edu/departments/geography/phdapphow.cfm>, or contact Brenda Nikas-Hayes, BNikasHayes@clarku.edu, 508-793-7337. Applicants are encouraged to communicate with prospective advisors.



[\(Back to Top\)](#)

Employment Opportunities

[Post Doctoral Position at GMU](#)

Source: <http://www.cisc.gmu.edu/>

The joint Center for Intelligent Spatial Computing (CISC) at George Mason University (GMU) invites applications for Post-Doctoral position in the geoscience information area. Applicants should have a recent Ph.D. in computer/computational sciences, geospatial information science, and GEOSS relevant sciences with a focus on computing. Working experience with OGC web services and/or grid computing for geoscience information applications are required. Salary will be competitive with full package of benefits. The appointment is for one year and is renewable subject to satisfactory performance and availability of funds. Please email a CV with three referees' contacts to Prof. Phil Yang, CISC/GMU, E-mail: cyang3@gmu.edu. Applications will be accepted until the positions are filled.

Position available - University of Iowa

Source: Marc Armstrong by way of Kenneth Young



The Department of Geography at the University of Iowa invites applications for a full-time tenure track appointment at the Assistant Professor level in the area of sustainability and water resources. The position is part of a significant University-wide sustainability initiative that seeks to build interdisciplinary faculty expertise in this emerging area. We seek an individual with research interests in surface water resources who will broadly complement one or more of the department's existing strengths in geoinformatics, land use science, environmental policy, biogeography, or health geography. A particular interest in connections between sustainable water resources and either global climate change or sustainable energy production is desirable. The appointment will begin in August 2010. A Ph.D. in geography or related discipline is required at the time of appointment. Minorities and women are encouraged to apply. For further information please see <http://www.uiowa.edu/~geog/water-resource>. Candidates must submit applications online at <http://jobs.uiowa.edu/> (requisition #57202). Attachments to the application should include a letter of application and curriculum vitae. The letter of application should include: a statement of teaching interests, evidence of teaching ability, and a statement that describes current and future research activities. Three letters of recommendation should be mailed to: Dr. David Bennett, 316 Jessup Hall, Department of Geography, The University of Iowa, Iowa City, IA 52242. Screening of applications begins **November 10**, 2009 and will continue until the position is filled. Questions regarding this position can be directed to Dr. Bennett david-bennett@uiowa.edu.

[\(Back to Top\)](#)

Global Spatial Data Infrastructure Latin America and the Caribbean Newsletter

Other

[Download Over a Million Public domain Books from Google Books in the Open EPUB Format](#)

Source: <http://booksearch.blogspot.com/>

Starting on August 2009, Google Books offers free downloads of these and more than one million more public domain books in an additional format, EPUB. By adding support for EPUB downloads, we're hoping to make these books more accessible by helping people around the world to find and read them in more places. More people are turning to new reading devices to access digital books, and many such phones, netbooks, and e-ink readers have smaller screens that don't readily render image-based PDF versions of the books we've scanned. EPUB is a lightweight text-based digital book format that allows the text to automatically conform to these smaller screens. And because EPUB is a free, open standard supported by a growing ecosystem of digital reading devices, works you download from Google Books as EPUBs won't be tied to or locked into a particular device.

Keep up to date on disaster risk reduction - get alerts from PreventionWeb

Source: Craig Duncan

PreventionWeb offers daily or weekly e-mail updates, so you can keep abreast of global action in disaster risk reduction. Subscriptions are available for weekly updates of: news, documents, meetings, training, jobs, educational materials and academic programmes. There is also a daily update of all new DRR content. Subscribe at: <http://www.preventionweb.net/english/email/> (the e-mail link is in the middle of the Home Page and at the top right of other pages) PreventionWeb now includes information from over 1,600 partner organizations. Submit your events, documents and jobs to share them with the global DRR community. Links between websites help search engines understand our work, and give users better results.



[\(Back to Top\)](#)

Americas: Conferences, SDI Events – Year 2009

[Year 2009](#) January February March April May June July August September October [November](#) [December](#)
[Year 2010](#) [January](#) [February](#) [March](#) [April](#) [May](#) [June](#) [July](#) [August](#) [September](#) [October](#) [November](#) [December](#)

NOVEMBER 2009

Nov 2 nd – Dic 4 th *NEW*	On line, E-conference	E-Conference on Integrated Land and Water Resources Management in Rural Watersheds
2-6	Quebec, Canada	ISO/TC 211 Meeting week
2-13	Foz do Iguazu, PR, Brazil	International Summer School on Climate Change of Land Cover and Hydroclima the River Plate Basin
3 *NEW*	Seattle WA, USA	2nd SIGSPATIAL ACM GIS International Workshop on Security & Privacy in GIS & LBS
3-6	Villavicencio, Colombia	First International Congress on Biodiversity at the Orinoco Basin
3-4	Calgary, Alberta, Canada	2009 GIS for Oil & Gas Calgary Conference
3-4	St. John's NL, Canada	ESRI Regional User Conference
3-4	Baltimore MD, USA	Smart Grid Road Show
4-6	Tucson AZ, USA	AGIC 2009: Geospatial Education and Training Symposium
4-6	Seattle WA, USA	17th ACM SIGSPATIAL International Conference on Advances in Geographic Information Systems (ACM GIS 2009)

Global Spatial Data Infrastructure Latin America and the Caribbean Newsletter

5 *NEW*	Ottawa, Canada	MapInfo Professional 10 Roadshow: Ottawa
5	Orlando FL, USA	Mapping Florida Communities: An Introduction to GIS & Community Analysis - One Day Workshops
7	Jacksonville FL, USA	Mapping Florida Communities: An Introduction to GIS & Community Analysis - One Day Workshops
7-11	Corumbá MS, Brazil	2° GeoPantanal – Symposium on Swamp Geo-technologies
9-12	Gramado, Brazil	3rd International Workshop on Semantic & Conceptual Issues in GIS (SeCoGIS2009) in conjunction with the 28th International Conference on Conceptual Modeling (ER2009) / Contact: Prof. Esteban Zimanyi / estebanzimanyi@gmail.com
9-13	Curitiba, Brazil	Iberoamerican and Caribbean Congress on Ecological Restoration
9-13 *NEW*	Santa Marta, Colombia	3rd International Congress of Dry Forests
9-20	La Antigua, Guatemala	XII Mapping Course / http://www.cifantigua.org.gt/ / cursos.iberoamerica@fomento.es
10-12	St. Petersburg FL, USA	2009 GIS in Transit Conference
10-13	Ouro Preto, Brazil	3rd Portuguese-Brazilian Symposium on Historic Cartography
11-13 *NEW*	Turbo, Colombia	2nd Uramar Seminar
12 *NEW*	Fort Collins CO, USA	GIS Day Celebration-Fort Collins
13-14 *NEW*	Browns Summit NC , USA	ASPRS North Carolina Chapter Fall Conference
14-19	San Antonio TX, USA	MAPPS/ASPRS Joint Specialty Conference
15-21	Santiago, Chile	ICC2009- 24th International Cartographic Conference 2009
15-21	Kingston, Jamaica	Geography Awareness Week
16	New York NY, USA	GIS 3.0: Geospatial Intelligence, Social Data, and the Future of Public Health Preparedness and Response
16-18	Leticia – Amazonas, Colombia	International Meeting on Wetlands in the High Amazon: Perspectives and Knowledge for Management
16-18	St. Petersburg FL, USA	2009 GIS in Transit Conference: The Route to Success in Transit GIS
16-18	Huntsville AL, USA	Rocket City Geospatial Conference 2009
16-19	San Antonio TX, USA	ASPRS/MAPPS 2009 Fall Conference
17-18	Washington D.C, USA	GEO-VI: Sixth Plenary Session of the Group on Earth Observations
18-20	St. Croix, Virgin Islands	5th Annual GIS Conference
19-20	Houston TX, USA	Houston Area GIS Day 2009
19-20 *NEW*	Trinidad and Tobago	Caribbean Land Conference 2009: Land Development and Alternative Dispute Resolution in the Current Global Financial Dynamics. Contact: Charisse Griffith-Charles Charisse.Griffith-Charles@sta.uwi.edu
23-27 *NEW*	SJ Campos-SP, Brazil	Latin American Dynamics Days- 2009 Further information: myrian@dsr.inpe.br
23-27	Medellín, Colombia	Introductory Course on Evolutionary Biogeography
Nov. 29th - Dec. 4th	Las Vegas NV, USA	Autodesk University 2009 Exhibition
Nov. 30th – Dec. 4th	Lima, Peru	GEOSS Latin America and Caribbean Water Cycle Capacity Building Workshop

DECEMBER 2009

1-4	Las Vegas NV, USA	Autodesk University
3-4	Mexico City, Mexico	3rd International Conference on Geospatial Semantics (GeoS 2009)
7-11	Mountainview CA, USA	OGC Technical and Planning Committee Meeting

Global Spatial Data Infrastructure Latin America and the Caribbean Newsletter

7-11	Seattle WA, USA	URISA Leadership Academy
14-18	San Francisco CA, USA	Fall Meeting AGU / http://www.agu.org/meetings.shtml

YEAR 2010

[Year 2010](#) [January](#) [February](#) [March](#) [April](#) [May](#) [June](#) [July](#) [August](#) [September](#) [October](#) [November](#) [December](#)

JANUARY 2010

5-7	Cuenca, Ecuador	Sixth International Conference on Environmental, Cultural, Economic and Social Sustainability
6-8	Redlands CA, USA	GeoDesign Summit

FEBRUARY 2010

10-15	St. Maarten, Netherlands Antilles	2nd International Conference on Advanced Geographic Information Systems, Applications, and Services / GEOProcessing 2010
-------	-----------------------------------	--

MARCH 2010

3-5 <i>*NEW*</i>	Denver CO, USA	International Lidar Mapping Forum Conference and Exhibition
6-10 <i>*NEW*</i>	Annapolis MD, USA	National States Geographic Information Council (NSGIC) Midyear Conference
7-13	Cancún, México	First International Conference on Environmental Change Awareness (BIOENVIRONMENT 2010)
8-11 <i>*NEW*</i>	Little Rock AR, USA	GIS / CAMA Technologies Conference
14-19	Mérida, Mexico	6th European Geosciences Union Alexander von Humboldt International Conference on Climate Change, Natural Hazards, and Societies
22-25	Marbella, Chile	Workshop on Urban Dynamics
22-25 <i>*NEW*</i>	Miami FL, USA	CARIS 2010
22-26	Rio de Janeiro, Brazil	World Urban Forum 5
23-25	Tampa FL, USA	DistribUTECH 2010 Conference & Exhibition
29-31	Orlando FL, USA	2010 AWRA Spring Specialty Conference
Mar. 30 – Apr. 1	San Jose CA, USA	Where 2.0 Conference 2010

APRIL 2010

Mar. 30 – Apr. 1	San Jose CA, USA	Where 2.0 Conference 2010
12-14	Charleston WV, USA	GIS-T 2010
14-18	Washington DC, USA	Association of American Geographers 2010 Annual Meeting
18-21	Huntington Beach CA, USA	16th Annual CalGIS Conference
18-22	Kansas City MO, USA	MAGIC 2010 Symposium
19-23	San Diego CA, USA	BAE Systems GXP International User Conference and Professional Exchange!
25-29	Phoenix AZ, USA	GITA's 2010 Geospatial Infrastructure Solutions Conference
26-30	Austin TX, USA	2010 NatureServe Conferences: Biodiversity without Boundaries
26-30	San Diego CA, USA	ASPRS Annual Conference / asprs@asprs.org

Global Spatial Data Infrastructure Latin America and the Caribbean Newsletter

MAY 2010

19 <i>*NEW*</i>	Bethesda MD, USA	NGA Tech Day
16-18	Montego Bay, Jamaica	2010 International Conference on Information Resources Management
20 <i>*NEW*</i>	Reston VA, USA	USGIF Industry Tech Day

JUNE 2010

1-4 <i>*NEW*</i>	Ithaca NY, USA	36th Annual Conference of the International Association for Social Science Information Service and Technology (IASSIST)
16-18	Calgary, Canada	Commission I Symposium "Image Data Acquisition - Sensors & Platforms" / Contact: Naser El-Sheimy (Presidente Comisión I) / elsheimy@ucalgary.ca
21-25	Santo Domingo, Dominican Republic	International Meeting "Virtual Educa" – 2010

JULY 2010

3-7 <i>*NEW*</i>	Edmonton Alberta, Canada	24th International Congress for Conservation Biology
26-30 <i>*NEW*</i>	Honolulu, Hawaii, USA	IGARSS'10: IEEE International Geoscience & Remote Sensing Symposium
26-30	Los Angeles CA, USA	SIGGRAPH 2010

AUGUST 2010

3-6 <i>*NEW*</i>	Buenos Aires, Argentina	Scientific Committee on Antarctic Research (SCAR) Open Science Conference (OSC)
8-13 <i>*NEW*</i>	Foz do Iguassu, Brazil	American Geophysical Union (AGU) Joint Assembly

SEPTEMBER 2010

12-16 <i>*NEW*</i>	Minneapolis MN, USA	National States Geographic Information Council (NSGIC) Annual Conference
19-24	Montreal, Canada	IWA World Water Congress and Exhibition

OCTOBER 2010

4-8 <i>*NEW*</i>	Santiago, Chile	Latin American Remote Sensing Week
18-22	Singapore, Singapore	GSDI 12 World Conference 2010: Realizing Spatially Enabled Societies
18-22	Orlando FL, USA	E-Learn 2010
20-22 <i>*NEW*</i>	Santiago, Chile	IAOS/Scorus Conference on official statistics and the environment: approaches, issues, challenges and linkages

NOVEMBER 2010

16-18	Orlando FL, USA	Commission IV Symposium "Geodatabases & Digital Mapping" / Marguerite Madden (President Commission IV) / mmadden@uga.edu
--------------	-----------------	---

[\(Back to Top\)](#)

Global Spatial Data Infrastructure Latin America and the Caribbean Newsletter

Please mention SDI-LAC as source of information in any correspondence you may have on items in this issue

To subscribe to SDI-LAC, please do so online at:
<http://www.gsdi.org/newslist/gsdisubscribe.asp>
Nancy Aguirre, PAIGH, Editor cnaguirre@ipgh.org
Global Spatial Data Infrastructure Association,
<http://www.gsdi.org>

DISCLAIMER:
GSDI, PAIGH and the Editor will not be held liable for any errors, mistakes, misprints or incorrect information. Copyright © 2009. All rights reserved.