

Global Spatial Data Infrastructure

Latin America and the Caribbean Newsletter

SDI-LAC

June

2012

Vol. 9, No.6

Spatial Data Infrastructure-Latin America and the Caribbean (SDI-LAC) is a regional, monthly, and free, electronic newsletter from the [Global Spatial Data Infrastructure Association](#) (GSDI). It focuses on aspects related with Spatial Data Infrastructure, and on GIS, remote sensing, and data management issues, related with SDI in Latin America and the Caribbean. It aims to raise awareness, provide useful information to strengthen national SDI initiatives, and support synchronization of regional efforts.



Global Spatial Data Infrastructure

GSDI

[GSDI Definition](#)

The [Pan-American Institute of Geography and History](#) (PAIGH), member organization of GSDI, and the [Permanent Committee on Geospatial Data Infrastructure for the Americas](#) (PC-IDEA), promote SDI development in the region. The newsletter is prepared by PAIGH for GSDI.

[Message from the Editor](#)

[Input to this Issue](#)

[Global and Regional SDI, News, Presentations](#)

[IGS News, Links, Publications](#)

[National SDI, News, Links, Presentations](#)

[Articles and Publications of the Month](#)

[Geospatial Research, Applications, Software, Data](#)

[Training and Funding Opportunities, Awards](#)

[Employment Opportunities](#)

[Other](#)

[Americas: Conferences, SDI Events \(Year 2012\) \(Year 2013\)](#)



Message from the Editor

This SDI-LAC issue highlights the following updates: The **Global and Regional SDI** section comprises a report on GGC 2012 (GSDI 13) Conference; GEO/GEOSS to participate in Rio+20 Conference; GEO-IX Plenary in Brazil; GeoSUR Award Deadline; First OSGeo Laboratory in South America; New SDI-Based Web page of the Zaragoza City; CLEARSITE Projects from CoE4UNSDI; and relevant conferences taking place worldwide. The **IGS section** includes a short call for membership. The **National SDI** segment informs on the recent policy giving free access to IGAC's Basic Geographic Information. **Articles and Publications** of the month comprise remarks on the book on *SDI Fundamentals* to be published soon; the book on *Spatially Enabling Government, Industry and Citizens: Research and Development Perspectives* published as part of the GSDI 13 World Conference; IDERA's Bulletin No. 7; and calls for articles to relevant journals. **Geospatial Research and Applications** underline the Brazilian e-foto GNU/GPL photogrammetric workstation; the Colombian National Policy on Disaster Risk Management; the Database of Island Invasive Species Eradications (DIISE); and New Version of ERDAS Imagine Software. The **Training and Funding Opportunities** section encompasses calls for international and national initiatives, among them relevant short course programs and workshops; and the European Satellite Navigation Competition 2012. Finally,

several **Events taking place in the Americas** are listed in the last section.

Translation of SDI-LAC Portuguese is possible thanks to undergrad students from UNESP **Mateus de Barros Manhani** and **Esrom A. Rissate Júnior** and the cartographers engineers: **Eduardo Freitas Oliveira**, MSc in GIS, editor of the portal MundoGEO and magazine MundoGEO; **Silvane Paixão**, MSc in Geodetic Sciences and Geoinformation Technologies, PhD in Land Administration and Land Information Management; **Camila Bassetto Guedes**, advisor of the Operations Department of the Air Space Control (in Spanish DECEA), **Juan Carlos Girona Mamani**, a consultant in Geotechnology and IT solutions for Geoinformation, **Annette Pic**, MSc in Remote Sensing; **Edilce Figueiredo Burity**, MSc in Computer Systems and Technologist of IBGE/PE Geographic Information and Statistics. Under the general coordination of Silvane Paixão.

Back issues of the newsletter are at the GSDI website: <http://www.gsdi.org/newsletters.asp>

Editor, **Nancy Aguirre**, Pan-American Institute of Geography and History (PAIGH), <http://www.ipgh.org>, cnaguirre@ipgh.org

Global Spatial Data Infrastructure

Latin America and the Caribbean Newsletter

Input to this Issue

| | |
|--------------------------|--|
| Sergio Acosta y Lara | Department of Geographic Information, Bureau of Surveying (MTO), SDI Working Group (GTIDE-AGESIC), Uruguay |
| Susana Barrera | Associate Professor, Department of Geography, National University, Bogota, Colombia |
| Brian Beck | Coral Reef Ecologist, Khaled bin Sultan Living Oceans Foundation, Landover, MD, USA |
| Miguel-Angel Bernabé | Professor, Department of Topographic Engineering and Cartography, University Polytechnic of Madrid, Spain |
| Santiago Borrero | Secretary General, Pan-American Institute of Geography and History, PAIGH, Mexico |
| Mario Cardoso | Doctoral Candidate, Department of Geography and the Environment, University of Texas at Austin, USA |
| Amy Carter | Philanthropy and Communications Manager, Island Conservation |
| Diego Díaz Martín | Metropolitan University (UNIMET), Venezuela |
| Ludo Engelen | SADL, KU Leuven, (Spatial Applications Division Leuven), Leuven, Belgium |
| Eduardo Freitas | Correspondent member of SDI-LAC Newsletter for Brazil |
| Kate Lance | SERVIR, NASA/USRA Coordinator, Huntsville, AL, USA |
| Eric van Praag | Coordinator, GeoSUR Program |
| F. Javier Zarazaga-Soria | Associate Professor, IAAA laboratory, University of Zaragoza, Spain |

[\(Back to top\)](#)

Global and Regional SDI, News, Presentations



GSDI
Global Spatial Data
Infrastructure Association



GSDI 13 Quebec Conference a Huge Success

Attracting almost 700 participants from 56 countries, the Global Geospatial 2012 Conference brought together the GSDI 13 World Conference, 14th GEOIDE Annual Scientific Conference, 7th 3D GeoInfo Conference, and Canadian Geomatics Conferences 2012 under one roof. Held in Québec City, Canada, 14-17 May, delegates were treated to a mix of plenary and technical sessions appealing to senior executives, technology professionals, researchers and students alike.

More than 200 papers were presented in seven parallel sessions on each of the four days of the conference, interspersed with five plenary sessions, a poster session on 15 May, and keynote presentations across the individual conferences. The conference this year also included nearly 50 exhibitors from across multiple geomatics industry sectors.

A limited-edition book of selected papers "Spatially Enabling Government, Industry and Citizens: Research and Development Perspectives" was provided free of charge to all conference registrants. Abstracts and Papers from the Conference may also be downloaded from the GSDI Association's website at http://www.gsdi.org/gsdiconf/gsdi13/prog_details.html.

Completing his term as GSDI Association President at this Conference, Abbas Rajabifard welcomed David Coleman (University of New Brunswick) and Dave Lovell (EuroGeographics) into their respective new roles of President and President-elect.

Global Spatial Data Infrastructure

Latin America and the Caribbean Newsletter

A geomatics professor and the Dean of Engineering at the University of New Brunswick in Canada, David Coleman recognized the challenges of his new role as President. According to Prof. Coleman: "The GSDI movement has worked over 15 years to ensure that high-level attention is paid to the interfaces between SDI technologies, services, policies, and people. President Abbas Rajabifard has done a great job in influencing SDI thinking internationally. Over the next three years, we must become even more relevant to the needs of people and institutions in emerging nations. We will accomplish that through the combined efforts of a dedicated Executive, a committed volunteer Board, and our member organizations."

Prof. Coleman recognized the special importance of GSDI's International Geospatial Society (IGS). "At a time when some people see a growing disconnect between our institutions and grass-roots users, IGS membership gives individual members the opportunity to connect with others and comments on SDI developments internationally." He also encouraged individual input through the GSDI Association's LinkedIn discussion group, which may be joined through <http://www.linkedin.com>. The IGS also has a LinkedIn sub-group, to which members can join once registering for the main GSDI Association group.

As Executive Director of EuroGeographics, President-elect Dave Lovell's influence brings the GSDI Association back to its roots in public sector mapping organizations. He added: "Thanks to greater data availability and technological capability, geo-information today touches more people's lives than at any other time in history. GSDI has an important continuing role in ensuring better understanding of its many benefits. I am pleased to be able to contribute to it."

Latin America and the Caribbean Region in GSDI-13



Participants from Latin America and the Caribbean contributed several presentations at GSDI-13. Respective abstracts, slides and/or papers may be found at the Conference website, and are also linked to the presentation- titles that follows. More information may be found at GSDI-13 [Detailed Program and Proceedings](#):

- An America's Regional Perspective on Spatially Enabling Society by [Santiago Borrero](#), Secretary General, Pan-American Institute of Geography and History
- GeoSUR, Building the SDI Foundations in Latin America and the Caribbean, by Eric van Praag, Santiago Borrero, Carolina Morera and Matthew Cushing [\[abstract\]](#)
- Modeling Spatial Data Infrastructures based on Cloud Computing, by Rafael Cruz and Tatiana Delgado [\[abstract\]](#)
- Spatially enabling government by semantic, scalable and smart Spatial Data Infrastructures for e-Governance, by Tatiana Delgado, Rafael Cruz, José Luis Capote and Silvio Hernández [\[abstract\]](#)
- Advances in the project for the elaboration of Chilean norms for geospatial information, by Alvaro Monett, Pablo Morales, María Loreto Advis, and Cintia Andrade [\[abstract\]](#)
- An overview on the status of Spatial Data Infrastructures relevant issues in PC-IDEA member countries, by Álvaro Monett Hernández, and Paula McLeod [\[abstract\]](#)
- PC-IDEA Initiatives towards Spatially Enabling the Americas, by Luiz Paulo Souto Fortes, Esteban Tohá González, Valéria Oliveira, and Henrique de Araújo [\[abstract\]](#)
- Progress in the implementation of the Chilean Geospatial Data Infrastructure, by Esteban Toha [\[abstract\]](#)
- Evaluation of the Proposal of a Spatial Data Infrastructure in Bahia-Brazil and its Potential Repercussions to Environmental Impact Assessments, by Fabiola Andrade Souza [\[abstract\]](#) [\[paper\]](#)
- Implementation of a Management and Information Administration Remote Sensing, by Ruben Dario Mateus Sanabria, Maria Liseth Rodriguez, and Maria Montenegro [\[abstract\]](#) [\[paper\]](#)
- Administration and Management of Georeferenced Information in the Institute of Hydrology, Meteorology and Environmental Studies of Colombia (in Spanish IDEAM), by Ruben Dario Mateus Sanabria and Maria Liseth Rodriguez Montenegro [\[abstract\]](#) [\[paper\]](#)

Global Spatial Data Infrastructure

Latin America and the Caribbean Newsletter

- Evaluating effectiveness in Semantic Spatial Data Infrastructures, by José Luis Capote and Tatiana Delgado [[abstract](#)]
- Contributions to the SDI from Latin American Universities - Some Undertaken Initiatives, by Mabel Álvarez, Villie Morocho, Andrea Morales, Zulema Beatriz Rosanigo, Gwyn Jones, and Lara López Álvarez [[abstract](#)] [[paper](#)]
- Does SDI need a gender dimension? by Nancy Aguirre, Lilia Patricia Arias and Santiago Borrero [[abstract](#)]
- The Global Spatial Network: Building International Research Collaborations on a Network to Network Level, by Peter Woodgate, and [Carmen Reyes](#)

GEO to Promote Awareness of GEOSS at the Rio+20 Conference

Source: GEO News (Issue No. 19, 25 May 2012)

Ensuring full and open access to the data and information available through the Global Earth Observation System of Systems (GEOSS) can make a vital contribution to the goals of United Nations Conference on Sustainable Development that will take place this month. The Group on Earth Observations (GEO) will raise awareness of GEOSS with an exhibition booth hosted at the Japan Pavilion in Athletes Park as well as through a number of seminars and panel discussions. For more information on these events and activities, please see [GEO's Rio+20 brochure](#).

First Announcement - GEO-IX Plenary, Brazil

Source: The GEO Secretariat by way of Santiago Borrero

The Ninth Plenary session of the Group on Earth Observations (GEO-IX) will be hosted by the Government of Brazil, Iguassu Falls, on 22 and 23 November, 2012. Practical information on the venue, travel, as well as on registration procedures and associated events will be sent to you shortly at www.earthobservations.org

First Edition of GeoSUR Award: Deadline June 29

Source: Eric van Praag by way of Santiago Borrero

GeoSUR La Red Geoespacial de América Latina y el Caribe

HOME SEARCH FOR DATA REGIONAL MAP VIEWER NEWS REGISTER CONTACT US

PARTNER RESOURCES

- Map Viewers
- WMS Services
- WFS Services
- CSW Services

Map of the Month

New geospatial service developed by the Inter-American Development Bank to visualize its project portfolio

LATEST NEWS

- GeoSUR launches new version of its Regional Portal
- The GeoSUR model is presented at the Eye on Earth Summit in Abu Dhabi
- Geosur obtains international award
- more...

Friday June 29th is the deadline for applying to the GeoSUR Regional Prize to be awarded by CAF – The Latin American Development Bank and the Pan American Institute of Geography and History (PAIGH). Each year the award will be bestowed to two activities that stem from the relationship between participating institutions and the GeoSUR Program that stand out for their application of the available data and use of the services provided by the Program. Firstly, recognition will be given to applications of data or development of services resulting from the GeoSUR Program which are innovative for the region. A second acknowledgement will be awarded to the application or service that stands out for its relevance for complying with the objectives of the GeoSUR Program. Institutions or individuals in any country of Latin America and the Caribbean may participate. GeoSUR will announce the winners in the categories of “Innovation and Relevance” during the installation ceremony of the 5th GeoSUR Program Meeting, as part of the 45 Meeting of the Directing Council of the PAIGH that will take place on November 2012, in Buenos Aires, Argentina, thus highlighting the initiatives of institutions and active members of GeoSUR. The guidelines to apply can also be found at: http://www.ipgh.org/GeoSUR/Files/Bases_Premio-GeoSUR_vENG.pdf. Further information can be requested from premios@ipgh.org or secretariageneral@ipgh.org.

Global Spatial Data Infrastructure

Latin America and the Caribbean Newsletter

OSGeo and ICA's MoU: First Open Source Geospatial Laboratory in South America

Source: OSGeo-Announce; <http://www.osgeo.org/news>



In 2011, the International Cartographic Association (ICA) signed a Memorandum of Understanding (MoU) with the Open-Source Geospatial Foundation (OSGeo) (<http://www.osgeo.org/node/1230>) with a view to develop global collaboration opportunities for academia, industry and government organizations in the field of open-source GIS software and data. The MoU aims to provide expertise and support for the establishment of Open-source Geospatial Laboratories and Research Centers across the world to support the development of open-source geospatial software technologies, training and expertise. The goal is to establish five

laboratories in Asia, Europe, Africa, the Americas and Australasia during the first phase. These will act as nodes for future expansion. The MoU also aims to provide support for building up and supporting the development of open-source GIS teaching and training materials, and the joint organization of open-source GIS events and workshops through the ICA network in order to encourage wider participation globally. The Open Source Geospatial Lab initiative in South America has been established at the Federal University of Parana in Brazil. Federal University of Paraná is regarded as the oldest Brazilian university. Details at <http://www.ufpr.br/portallufpr/>. The Open Geospatial Lab at Federal University of Paraná will be led by Prof. Silviana Comboin. Silviana has strong research background in Geospatial Science, SDI and Geographic Information standards. Previously she was working at the Brazilian National Mapping Agency before moving to Federal University of Paraná as a professor at the Geomatics Department. She also coordinates the Standards Workgroup of the Brazilian National Spatial Data Infrastructure (in Portuguese INDE). She also has a strong team and action plan in place for building this initiative for Brazil and South America. The initial team of the Open Geospatial Lab at UFPR will comprise of Prof. Dr. Luciene S. Delazari, Prof. Dr. Maria Cecilia B. Brandalize, Prof. Dr. Claudia Robbi Sluter, André Luiz Alencar de Mendonça and Gisele Canova (IBGE - Brazilian Institute of Geography and Statistics). If you are interested in establishing an Open Source Geospatial Lab and build research and teaching collaborations please contact Suchith Anand (Suchith.Anand@nottingham.ac.uk), to discuss details:

<http://www.nottingham.ac.uk/~lgzwww/contacts/staffPages/SuchithAnand/Suchith%20Anand.htm>

<http://www.nottingham.ac.uk/cgs/research/researchareas/opensourcegeospatialresearch.aspx>

<http://elogeo.nottingham.ac.uk/>; <http://ica-opensource.scg.ulaval.ca/>

For more information please contact Dr. Serena Coetzee (serena.coetzee@up.ac.za) / Centre for Geoinformation Science:

<http://www.up.ac.za/cgis> / International Cartographic Association: <http://www.icaci.org> and/or Open Source Geospatial

Foundation: <http://www.osgeo.org>

New Web page of the Zaragoza City Council Based on its SDI

Source: F. Javier Zarazaga-Soria

The Zaragoza City Council has released a new version of its website: <http://www.zaragoza.es>. The new entry point provides access to a whole range of services to the Citizenship, which are shown from a geographical point of view thanks to the support provided by the Spatial Data Infrastructure of the Zaragoza City Council (in Spanish IDEZar: <http://idezar.unizar.es>). On the right side of the Web page there is a drop down tab that enables you to display a large amount of information about the City on the map that acts as a central



element. This new development has been done by the technical team of Municipal Website of the Zaragoza City Council, the Advanced Information Systems Laboratory from the University of Zaragoza (<http://iaaa.unizar.es>) and the company GeoSpatiumLab (<http://www.geoslab.com>).

Land Professionals Need to Adopt Change Quickly

Source: <http://www.gim-international.com/>

Major changes, both inside and outside the profession, will influence land administration over the coming years and will change the nature of land professionals' work. There are major challenges ahead, with an estimated 4.5 billion parcels needing to be registered in the coming years. Discussion will be key, as will taking the context of the regions involved into account. These were just some of the conclusions from the recent FIG Working Week held in Rome, Italy. Read more [here](#).

Global Spatial Data Infrastructure

Latin America and the Caribbean Newsletter

News from SDI Magazine

Source: <http://www.sdimag.com/>



CLEARSITE Projects from CoE4UNSDI: The Centre of Excellence for UN Spatial Data Infrastructure (CoE4UNSDI) is undertaking a set of three projects, collectively called "ClearSite". The three ClearSite projects to be completed within 3 years are: Standards and Best Practices for Provisioning of Core Geospatial Datasets (OICT); Geospatial Data Warehouse (FAO); and Visualization Facility (UNOG/ICTS). The Office of Information and Communications Technology (OICT) of the UN Secretariat in New York has established the Centre of Excellence for UN Spatial Data Infrastructure (CoE4UNSDI) under the strategic direction of the UN Spatial Data Infrastructure (UNSDI) Steering Committee of the United Nations Geographic Information Working Group (UNGIWG). OICT, the Food and Agriculture Organization (FAO) and the United Nations Office in Geneva, Information and Communications Technology Service (UNOG/ICTS) have formed an inter-agency partnership to undertake an initial set of three projects, as a UN System-wide harmonization

initiative in reference to the UN ICT Strategy endorsed by the General Assembly in 2010 (Section 29 (A/64/6)). Further Information: Mr. T. Suha Ulgen (ulgen@un.org) [Written by Roger Longhorn]

International Working Group on Satellite Based Emergency Mapping: Some 20 representatives of international and national organizations gathered in Ispra, Italy to formally establish the International Working Group on satellite based emergency mapping (IWG-SEM). The mission statement that the participants agreed upon refers to establishing best practices between emergency-mapping programmes to enable better collaboration and capacity coordination, with a view to also define jointly a set of professional standards for emergency mapping and data use. For more information, contact lorant.czaran@unoosa.org [Written by Roger Longhorn]

Call for Papers for the 8th International Conference on Geo-information for Disaster Management

Source: Ludo Engelen by way of Santiago Borrero

The 8th International Conference on Geo-information for Disaster Management (GI4DM2012) will be held in Enschede, the Netherlands, on December 13-16, 2012. The Conference aims to advance the roles of geo-information technologies and sensor and communication networks in the fields of public safety and crisis management with focus on intelligent use of geo-information, semantics and situational awareness. Topics of interest include but are not limited to: Data modeling and visualization; Sensor and communication networks; and user requirements and best practices. All papers will be reviewed by a scientific committee and experts in the field. Accepted papers will be published in a Springer book. Authors of selected papers will be invited to extend the paper for possible publication in special issues of International Journals. Two types of papers are solicited: Scientific Papers, and Professional/Demo Papers. All papers should be submitted via the *EasyChair* link on the web site <http://www.gi4dm.net/2012>. **Deadlines:** Full paper submission, **August 15th**, 2012; Short paper submission: **September 10th**, 2012. Detailed information at: <http://www.gi4dm.net/2012>. Contacts: pc@gi4dm.nl and info@gi4dm.nl.



International LiDAR Mapping Forum Launch Call For Papers

Source: Ludo Engelen by way of Santiago Borrero

The Technical Committee for the International LiDAR Mapping Forum (ILMF), which is taking place in Denver, USA, February 11-13, 2013, has announced a Call for Papers and invites any interested parties to submit their abstracts by **September 28**, 2012 online at <https://secure.smartregister.co.uk/events/Intelligent-Exhibitions/2013/ILMF-CFP/start.aspx>. The ILMF Technical Committee, led by Conference Chairman Alastair MacDonald, will peer review each abstract and the final program will be announced in November. ILMF set a new record for attendees in January 2012, when 773 professionals from 29 different countries turned up in droves for the 12th annual event.

This proved once again that LiDAR, in its increasing variety of operational formats, either alone or when complementing other technologies, is becoming the technology of choice for fast, accurate and quality geospatial data acquisition. Whether supporting highly detailed 3D urban mapping projects, forestry management, or railroad and power transmission line maintenance programs, LiDAR technology delivers the results needed by today's demanding geospatial and mapping professionals. For a full list of topics, please go to <http://www.lidarmap.org/conference/Default.aspx>. If you would like to learn more please contact caroline.hobden@intelligentexhibitions.com or go to www.lidarmap.org



[\(Back to top\)](#)



Global Spatial Data Infrastructure

Latin America and the Caribbean Newsletter

IGS News, Links, Publications



International
Geospatial Society



The International Geospatial Society (IGS) is the individual membership arm of the GSDI Association and seeks individuals for membership that have geospatial, Spatial Data Infrastructure, Geographic Information System or related professional or specialist interests. The Society enhances communications globally among individuals that are actively involved in promoting, developing, or advancing spatial data infrastructure and related concepts. Check out the Benefits of Joining ([English](#)) ([Spanish](#))

[\(Back to top\)](#)

National SDI, News, Links, Presentations

COLOMBIA

IGAC Gives Access to the Country's Basic Geographic Information

Source: Resolution Number 0364 of 25 April, 2012



INSTITUTO GEOGRÁFICO AGUSTÍN CODAZZI



By Resolution Number 0364 of 25 April 2012, the Geographic Institute “Agustin Codazzi” (IGAC) in Colombia adopts the new policy of access, use and sharing of official and basic geographic information, under the guidelines of the Colombian Spatial Data Infrastructure (in spanish ICDE). In this Resolution (Article 3) basic-official geographic informacion produced by IGAC is considered to be public, so that their access, use and sharing will be free of charge for their collection, maintenance, preservation, and conservation; so long their use is not for commercial purposes. This policy applies to all IGAC’s official geographic informacion that is provided through Web services in accordance with IGAC’s technical and technological capacity. Article 2 provides that “topographic maps and derived products, which are at small scale, that is, 1:100,000, 1:250,000, 1:500,000 or smaller; as well as Type 1 and Type 2 cadastral records, and RINEX point files, will be free to access, download, use and sharing. In addition, IGAC’s publications, geodetic network, as well as the contents provided by the Agrological Information Management System (in spanish SIGA), and the Cadastral Information System (in spanish SIC); aerial photographs, orthophotomaps, spacemaps and orthoimages (contained in the National Bank of Images) may be visualized through its Web services. Topographic maps and derived products that are at larger scales, i.e. 1:25.000, 1: 10.000 and 1:5000, or of larger detail will be accessible for consultation and downloading, using a mechanism considered appropriate by stakeholders to this effect, such as the signing of an information-exchange interinstitutional agreement between governmental organizations ...” (page 4). Full text of this Resolution may be found [here](#).

[\(Back to top\)](#)

Global Spatial Data Infrastructure

Latin America and the Caribbean Newsletter

Articles and Publications of the Month

Publication of the book *SDI Fundamentals*

Source: Miguel-Ángel Bernabé by way of Santiago Borrero



On April 20, [UPM-Press](#) (of the Politechnic University de Madrid, Spain) reported that the book on *SDI Fundamentals* (Spanish only) was accepted for publication by three external reviewers (in a blind evaluation), so that the book is currently undergoing an editing process and will shortly have its ISBN. The book's publication has been delayed almost a year from that intended. Causes for this delay are varied, but the fact of coordinating a book's publication with about one hundred authors, has had an impact. The book is not a collection of 40 articles properly and thematically arranged, but has a pre-established chapter structure, in which each chapter may be informed by the previous one. This structure

required an enormous amount of coordination, reviewing (ten revisions were made to each chapter in average), syntactic homogenization, as well as reference standardization that has resulted in a book with great coherency. As one of first Castilian (spanish)-written texts on Spatial Data Infrastructure that is authored by people from almost every country in Latin America, this work deserves the highest attention. Miguel-Angel Bernabé, and Carlos M. Lopez-Vazquez are editors of this book, and especially thank to those who helped them on coordinating several of the book's sections: Dr. Analia Argerich and Mr. John Rickert (Argentina); Dr. Diego Erba (Argentina); Dr. Oscar Abarca (Venezuela); Dr. Tatiana Delgado (Cuba); and also to Antonio Rodriguez-Pascual of the National Geographic Institute (in Spanish IGN) of Spain and his office mate Miguel-Angel Manso-Callejo for their reviewing of most of this book's chapters.

Spatially Enabling Government, Industry and Citizens: Research and Development Perspectives

Book edited by Abbas Rajabifard and David Coleman (GSDI Association); GSDI Association Press.

From both theoretical and practical viewpoints, this scholarly book presents the latest research by international experts in the area of spatial enablement and Spatial Data Infrastructure for citizens at all levels of government and industry. All the chapters together (14 chapters distributed inside three parts) give an overview of the current concepts, foundations, activities, connections, participating and involved in spatial enabling government, industry and citizens in the world with an aim to further contribute to the understanding of, and address the issues, challenges and requirements in achieving a spatially enabled society. The chapters presented in this book have gone through a full peer review process as part of the Global Spatial Data Infrastructure, GSDI 13 World Conference in 2012. Publication sponsors include the GSDI Association; the Centre for SDIs and Land Administration (CSDILA), the University of Melbourne; and the Department of Geodesy and Geomatics Engineering, the University of New Brunswick. This book is licenced under the Creative Commons Attribution 3.0 License, and may be found at the GSDI Association webpage at: www.gsdi.org

Bulletin No. 7 of the IDERA

Source: IDERA Diffusion



This new issue of the newsletter for the Spatial Data Infrastructure of the Republic of Argentina (in spanish IDERA) includes progresses of the IDERA

project; developments in SDI, GIS and cartography at the national and local levels; a section on presentations and downloads; and an agenda of GIS events. Archives of this bulletin may be downloaded from the IDERA website at: www.idera.gov.ar



Global Spatial Data Infrastructure

Latin America and the Caribbean Newsletter

Call for Articles - *Latin American Journal of Geography Students*

Source: Susana Barrera

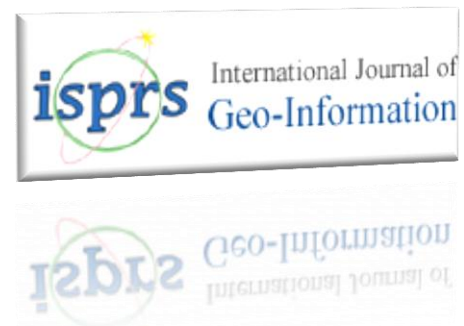


All geography and related fields' students are invited to participate in the *Latin American Journal of Geography Students*, third issue www.releg.org that focuses on: "Sustainable development and new production alternatives." Please send your papers to revistalatinamericana09@gmail.com

Special Issue "Spatial Data Infrastructures, Cyberinfrastructure, and e-Science for GIScience"

Source: Kate Lance; http://www.mdpi.com/journal/ijgi/special_issues/spatial_data/

A special issue of ISPRS *International Journal of Geo-Information* (ISSN 2220-9964). Deadline for manuscript submissions: **30 September 2012**. Recent developments in geospatial and related technologies are having profound impacts on the field of geographic information science. This special issue takes stock of these impacts through contributions from leading GIScientists working at this scientific-technological interface. An overriding goal of this special issue will be to bring much needed clarity to the broadly defined and rapidly evolving areas of SDI, cyberinfrastructure, and e-Science to provide focus and guidance to GIScientists who want to make use of stirring new developments in Information and Communication Technology such as high speed networks, high performance computing, and distributed collaborative environments.



Calls for Papers (special): *International Journal of Applied Geospatial Research (IJAGR)*

Source: Mario Cardozo



Special issue on "Geospatial Technologies and Indigenous Communities Engagement". Guest Editors: Renee Pualani Louis and G. Rebecca Dobbs. Indigenous communities have successfully engaged with all forms of geospatial technologies (including digital maps, satellite images, geographic information systems, and global positioning systems) since the 1970s to protect tribal resources, document territorial sovereignty, create tribal utility databases, and manage watersheds. As a result, the number and breadth of Indigenous mapping projects has exploded worldwide, generating numerous conferences, forums, and workshops. In this special issue of

IJAGR, it is sought to highlight ways that geospatial technologies have benefitted or stand to benefit Indigenous peoples. Researchers and practitioners are invited to submit papers for this special theme issue on "Geospatial Technologies and Indigenous Communities Engagement" on or before **March 1, 2013**. All submissions must be original and may not be under review by another publication. Interested authors should consult the journal's guidelines for manuscript submissions at <http://www.igi-global.com/Files/AuthorEditor/guidelinessubmission.pdf>. All submitted papers will be reviewed on a double-blind, peer review basis. Papers must follow APA style for reference citations. Authors should submit manuscripts via the IGI Global online submission system for this special issue, at <http://www.igi-global.com/authorseditors/titlesubmission/newproject.aspx>. All inquiries should be directed to the attention of: Renee Pualani Louis (mapdr@earthlink.net) or G. Rebecca Dobbs (grdobbs@gmail.com)

[\(Back to top\)](#)

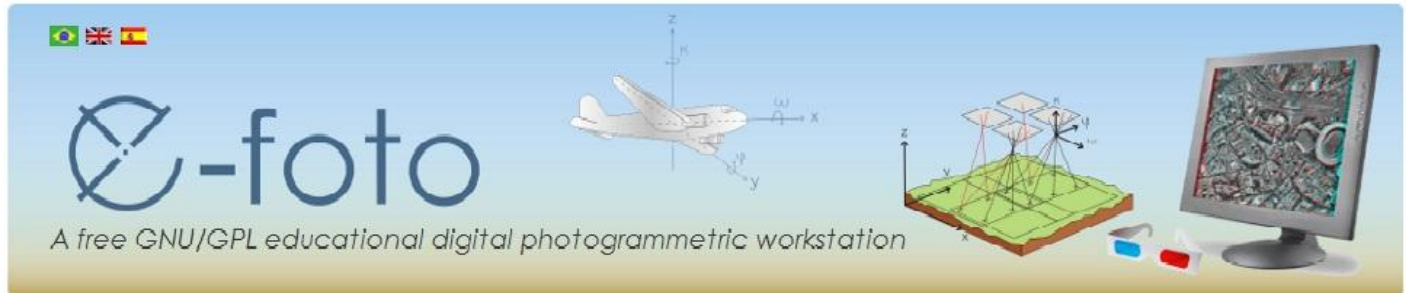
Global Spatial Data Infrastructure

Latin America and the Caribbean Newsletter

Geospatial Research,
Applications, Software, Data

[E-foto: A free GNU/GPL Educational Digital Photogrammetric workstation, Brazil](#)

Source: Open Forum on PPGIS; <http://www.efoto.eng.uerj.br/>



[The Rio de Janeiro State University](#), in Brazil, throughout last years has been developing a GNU/GPL photogrammetric workstation called e-foto (<http://www.efoto.eng.uerj.br/en>). The first fully integrated version of the e-foto suite was officially launched in May 2012. E-foto is available for download on the latter website (English, Portuguese and Spanish). The project's team is always looking for other institutions and individuals who would like to partner with them. The idea behind the e-foto project was to offer a simple set of software that could help students understand the principles behind Photogrammetry. The project is based on two main principles (pillars): freedom, and self-teaching. The ultimate idea is to lead students to fully understand the principles behind Photogrammetry – reading the e-book, using the software, taking a look at its source code and even modifying it or developing new modules. E-foto is a free software, distributed under the terms of the GNU Public License at (<http://www.efoto.eng.uerj.br/en/download>).

Chile is now part of ISO/TC 211 Technical Committee

Source: SNIT Blog by the way of Eduardo Freitas

Chile, through the National Institute of Standardization (in Spanish INN), has recently joined the ISO/TC 211 Technical Committee as a member of the International Organization for Standardization (ISO), which has responsibility for developing standards for Digital Geographic Information. Participation of Chile is as a P (Participant) member who means that this country may look and comment pertinent standards that are produced and updated by ISO on the subject of Digital Geographic Information. These are the 19100 family standards. The ISO/TC 211 Committee, aims to develop international standards enabling and supporting the understanding and use of geographic information:

- Offer ways to have, access, integrate and share geographic information, enabling interoperability of geospatial systems;
- Facilitate the establishment of spatial data infrastructures at all levels;
- Contribute to a unified vision that addresses environmental and humanitarian issues globally;
- Contribute to sustainable development.

Currently, in Chile runs a project that considers a set of 19 standards of geographic information based on the Technical Committee TC 211, which will be part of the regulatory framework of the National Spatial Data Infrastructure (in Spanish INDE). The Chilean norms on Geographic Information seek to obtain a best possible translation from TC 211 Committee standards, thus achieving 19 Chilean Geographic Information Standards identical to ISO standards but in Spanish.

National Policy on Disaster Risk Management and the National Management System, Colombia

Source: Santiago Borrero

The [Law 1523 of 2012](#) (April 24) is the instrument by which policy on national disaster risk management, the establishment of the National Disaster Risk Management, and other provisions, are adopted in Colombia. The Act recognizes risk management as “a social process geared to the design, implementation, monitoring and evaluation of policies, strategies, plans, programs, regulations, instruments, actions and permanent activities for risk knowledge and reduction and for disaster management, with the explicit purpose of contributing to the safety, welfare, and quality of life of people and to sustainable development.” The National Risk Management Plan addresses risk identification and analysis, monitoring of risk factors, risk communication, reduction of risk factors by corrective intervention and prospective financial protection, preparation for emergency response, recovery preparedness, which will include:

Global Spatial Data Infrastructure

Latin America and the Caribbean Newsletter

rehabilitation and reconstruction, information systems, consolidation of the national geographic information policy and the Colombian Spatial Data Infrastructure (in Spanish ICDE), and institutional strengthening, among others (Article 33: Paragraph).

The National Information System for Disaster Risk Management and the National Unit for Disaster Risk Management framed within the policies, standards and technologies that define the Colombian Spatial Data Infrastructure, shall implement a national information system for disaster risk management, which must be kept updated and functional by integrating contents from all national and territorial organizations, in order to promote the generation and use of information on disaster risk reduction and emergency response in the country, and offering information support demanded by risk managers at all governmental levels (Article 45).

Departments, districts and municipalities will create Disaster Risk Management Information Systems for their jurisdictions in harmony with the national system (Article 46). The full text can be found at: http://201.244.4.20:8080/HOMEPAGE/ALEGIS_INTER/LEYES_Y_DECRETOS/2012/LEY_1523_de_2012.pdf.

Social Networks on Geo Connects more than 3.5 Thousand Professionals

Source: Eduardo Freitas



MundoGEO, creator of the GeoConnectPeople social network, announces that the number of members connected to the platform just passed 3,500. GeoConnectPeople brings together professionals, students and researchers of the geospatial sector and provides an environment for open discussion on satellite imagery, geoprocessing, GPS, surveying and mapping, among other topics. The network is free and allows members to create discussion groups, upload photos and videos, create forum topics and share their status. GeoConnectPeople social network aims at being a global integration tool for professionals working in the market of geospatial solutions. The network currently has representatives from all continents. Web link: <http://geoconnectpeople.org>.

DMCii will Provide Amazon Satellite Images to INPE

Source: Eduardo Freitas

The British company DMC International Imaging (DMCii) solutions, provider of remote sensing and responsible for the marketing of satellite images of the constellation DMC (Disaster Monitoring Constellation), reported recently that it signed a new contract with the National Space Research Institute (in Portuguese INPE) of Brazil, for delivery of satellite imagery to monitor deforestation in the Amazon in real time. The contract will allow INPE to directly access images produced by UK-DMC2 satellite through its earth station reception at INPE in Cuiabá (MT) as well as to make these available for free access on its website. Generated images have resolution of 22 meters and will detect smaller areas of deforestation compared to previously used data from the MODIS sensor aboard the American Terra satellite of NASA.

Database of Island Invasive Species Eradications (DIISE): a new tool for Conservation Practitioners

Source: Amy Carter

Database of Island Invasive Species Eradications



The Database of Island Invasive Species Eradications (DIISE) –a new tool for conservation practitioners– is now available at: <http://eradicationfdb.fos.auckland.ac.nz/>. Islands are the epicenter of the current extinction crisis and invasive vertebrates are a leading cause of extinctions on islands. However, protection of threatened biodiversity by removing invasive vertebrates from islands is becoming a powerful and widely used conservation tool. To date we have documented 1182 successful eradications of invasive vertebrates on 762 islands. The DIISE is a publicly available resource to help land managers and conservation practitioners learn more about invasive vertebrate eradication projects. The database provides detailed information on individual eradication projects and also provides opportunities to analyze trends in past eradication projects. We will maintain and update the database regularly to

Global Spatial Data Infrastructure

Latin America and the Caribbean Newsletter

incorporate new eradication projects. We encourage you to review the database and submit edits to existing data or new projects not currently in the database. Details on how to submit comments are provided on the DIISE website, <http://eradicationfdb.fos.auckland.ac.nz/>. The DIISE is a collaborative partnership comprising Island Conservation, the IUCN SSC Invasive Species Specialist Group, the Coastal Conservation Action Lab at the University of California, Santa Cruz, Maanaki Whenua - Land care Research, and the University of Auckland, New Zealand. Contact Island Conservation at science@islandconservation.org

Heat Maps Measure Bikeability in North American Cities

Source: WALIS May 2012 eNews



A series of heat maps measuring the bike friendliness of 20 North American cities has been launched in a bid to promote cycling and improve infrastructure. Released during National Bike Month (May) in the U.S. and in advance of Bike Month in Canada, the maps of 10 U.S. and 10 Canadian cities is said to be the only quantitative measure of bikeability in North America. The Bike Score-based maps ranked Victoria, Vancouver and Montreal highest in bikeability among Canadian cities and Minneapolis, Portland and San Francisco the best in the United States. The research, conducted by researchers from University of British Columbia and Simon Fraser University, in partnership with Seattle-based Walk Score, is expected to help both consumers and city planners. Web link to full article: http://www.chinadaily.com.cn/xinhua/2012-05-15/content_5919474.html.

More at: <http://www.publicaffairs.ubc.ca/2012/05/14/vancouver-montreal-portland-and-minneapolis-among-most-bikeable-cities-in-north-america-ubc-research/>; <http://cyclingincities.spph.ubc.ca/mapping-cycling-trips/tools-training/>.

Intergraph Releases New Version of ERDAS Imagine Software

Source: Eduardo Freitas

Intergraph announces the release of software Erdas Imagine version 11.0.5, a system that incorporates geospatial data processing, image analysis and remote sensing in a single package. Enhancements to this new version include more connectivity with GeoMedia, and bringing together imaging with GIS analysis. Another novelty is the MosaicPro tool to create image mosaics, and support for new sensor models, including airborne sensor VisionMap A3 and the satellite constellation Pleiades.

[\(Back to top\)](#)

Training and Funding Opportunities, Awards

Course on Modeling Ecological Flows

Source: Education CATHALAC



The course objective is to develop knowledge and practical skills to determine ecological stream flows, assess environmental impacts and identify options for restoration and conservation of ecosystems and water resources. The course is intended for professionals working in public and private organizations (ministries of water, environment, agriculture, energy, water boards or committees, hydroelectric, mining, and agricultural

producers), among others. It will take place on **June 25 to 29, 2012** at the CATHALAC headquarters, City of Knowledge, Building 111, Clayton, Panama, Republic of Panama. You may register online at www.cathalac.org/educacion/registro (Select Course Modeling E Flows).

Global Spatial Data Infrastructure

Latin America and the Caribbean Newsletter

[e-learning Diploma in geographic data management, analysis and modeling](#)

Source: Educa

"Techniques and Technologies for Social, Urban and Rural Development" (in Spanish TYTREDSUR <http://tytredsur.org/>) is a nonprofit organization created to support Rural and Urban Social Development, based in the cities of Tarija and La Paz, Bolivia. The Military Engineering School "Mariscal Antonio Jose de Sucre" (EMI) and TYTREDSUR announced the "e-Learning Diploma in geographic data management, analysis and modeling", to be held on September 1 to December 31, 2012. For more information access the link: <http://tytredsur.org/programas-academicos/diplomado/gestion-analisis-y-modelamiento-de-datos-geograficos/>



4th International Course on WRME and Environment, Venezuela

Source: Diego Díaz Martín

The Fourth International Training Course on Integrated Water Resources and Environmental Management (WRME) will be held at the Metropolitan University (in Spanish UNIMET) in Caracas, Venezuela on **June 27 to 29, 2012**. The course will provide a conceptual framework for an ecosystem approach to watershed, integrating the various aspects of water and land in relation to human activities. In the context of WRME, the contents of the course will review ecosystem perspectives in conjunction with social perspectives, and the economic development challenges to reduce poverty and improve people's life quality in a world with an increasing population growth. The course aims to provide participants with the above principles with emphasis on water resource framework and management in Venezuela and other Latin American countries, and their application to specific situations. Scholarships are available for academics who may take advantage of this training course in their academic courses in Venezuela. Contact: Mr. Yazenia Frontado: yfrontado@vitalis.net

Summer School on GIS and Islands, Azores

Source: EU Overseas Forum



GIslands 2012 – 2nd Advanced International Summer School on GIS and Islands: Climate Change and Coastal Environmental Planning, August 5-11, 2012, Biology Department, University of Azores, São Miguel Island, Portugal. GIslands 2012 is an International Summer School on Geotechnologies applied to Climate Change and Coastal Environmental Planning organized by the Research Center in Biodiversity and Genetic Resources (CIBIO-Azores) at University of the Azores, situated in the beautiful Azores archipelago in North Atlantic. In this 7-day course a diverse and multinational team of lecturers from Spain, United Kingdom, USA and Portugal will share their experiences and students will present their research related to Climate Change and Coastal Environmental Planning and learn through theories and hands-on experiences on how to apply Geotechnologies on Climate Change and Coastal Environmental Planning. Participants are invited to present their work/case-study at the course in the related fields of Marine and Coastal Sciences (Ocean Governance, Oceanography, Marine Biology, Marine Geology, Fisheries) and Applied Geotechnologies (GIS, Remote Sensing, GPS) and to apply for GIslands 2012 participation. Deadline for short papers and abstracts submission: **15th June 2012**. For further information please visit <http://www.gislands.org/>.

European Satellite Navigation Competition 2012

Source: Eduardo Freitas



In its eighth year, the European Satellite Navigation Competition (ESNC) encourages the development of new services and applications using satellite navigation technology, with the potential to become a viable business. With a total of almost one million euros in prizes, opportunities of business incubators, training and advice on patents, marketing and prototyping, ESNC 2012 aims to support a large number of ideas. The ESNC is searching applications based on satellite navigation using this technology in innovative ways. To register, look first the over

20 participating regions to choose which award best suits your business plan. You can also submit ideas to the special awards or prototyping. The winner of "Galileo Masters" of ESNC, worth in 20,000 euros, will be selected from among



Global Spatial Data Infrastructure

Latin America and the Caribbean Newsletter

all the regional winners and special awards. The registration period is open until **June 30, 2012**. The name of the winners will be announced during the awards ceremony to be held in Munich, Germany on October 25. More information: <http://www.galileo-masters.eu>.

[\(Back to top\)](#)

Employment Opportunities

Job Announcement: Professor for Applied Geoinformatics

Source: Ludo Engelen

The Department of Geography in the Faculty of Applied Computer Science of the University of Augsburg (Germany) invites applications for a position as Professor for Applied Geoinformatics (at the level of W2) to be filled immediately. We search for a personality with an excellent record in research who will represent and further develop the topic area of applied geoinformatics within the research and teaching activities of the Department of Geography. The successful candidate should contribute expertise in one or more of the following topics: geodata visualization, visual analytics, spatio-temporal modeling, geodatabases or geostatistics. She/he is expected to contribute to the further development of the special profile of human geography as it is practiced in Augsburg (renewable energies, resources, and environmental hazards). In terms of teaching activities, the future position holder will be involved particularly in the B.Sc. and M.Sc. programs in Geoinformatics and in Geography, as well as the full range of study programs for teachers of Geography. We expect the applicant to actively initiate and participate in interdisciplinary study programs. Additional tasks include cooperating with the Centre for Environmental Research (in German WZU) at the University of Augsburg as well as participating in academic administration. The successful candidate will have a university degree, and relevant pedagogical experience, hold a doctorate, and have a strong research record that includes post-doctoral work (Habilitation) or equivalent academic achievements, e.g. research conducted as part of a successful assistant professorship. The University of Augsburg aims to increase the number of women in research and teaching and therefore strongly encourages female researcher to apply. Preference will be given to disabled applicants in the case of equal qualifications. Applicants should submit electronically including curriculum vitae, academic credentials, a list of publications, a list of courses taught, a list of funded projects and statements of research and teaching interests as a single pdf until **June 25th, 2012** to the Dekan der Fakultät für Angewandte Informatik, Universität Augsburg, 86135 Augsburg, email: dekan@informatik.uni-augsburg.de.

DCMC: PhD/Postdoctoral Fellowship in reef Resilience

Source: Brian Beck



The Khaled bin Sultan Living Oceans Foundation (Foundation) sponsors graduate fellowships for Doctoral students and Postdoctoral researchers conducting applied research that will contribute to improved management and conservation of coral reef resources and habitats. In 2012, the Foundation will support one new dedicated and hardworking individual interested in contributing to research activities conducted during a multidisciplinary global coral reef expedition (www.globalreefexpedition.com). This individual will have research opportunities in a number of locations in the South Pacific, Southeast Asia, Indian Oceans and Red Sea spanning the period of 2012-2015. The primary objectives of the expedition are to map and characterize remote coral reefs and conduct coral reef ecosystem health assessments across gradients of human and natural disturbance. In each country a dedicated team will conduct baseline coral reef assessments using a rapid assessment protocol that combines attributes of the Atlantic and Gulf Rapid Reef Assessment protocol and the International Union for Conservation of Nature (IUCN) Resilience Assessments. A major focus of the research will involve characterization of reef health with emphasis on 1) determining global and local processes that control the functioning of these ecosystems, 2) assessing impacts from acute disturbances and how patterns of recovery vary across biophysical gradients and 3) identification of strategies that can help mitigate impacts and improve the ability of these systems to withstand future disturbances. Please see <http://www.livingoceansfoundation.org> and click on "Education", then "Fellowships" for more information and full application criteria and requirements. Applications can be submitted by e-mail to Bruckner@livingoceansfoundation.org. Deadline for application: **June 30, 2012**

[\(Back to top\)](#)

Global Spatial Data Infrastructure

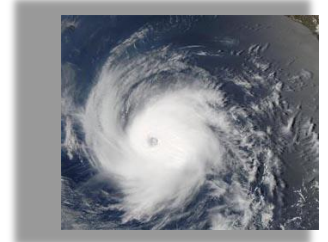
Latin America and the Caribbean Newsletter

Other

[NOAA: 2012 Sees Normal Hurricane Season](#)

Source: <http://www.terraily.com/>

The National Oceanographic and Atmospheric Administration (NOAA) predicted a near-normal 2012 Atlantic hurricane season. For the six-month season, which begins June 1, NOAA's Climate Prediction Center said there's a 70 percent chance of nine to 15 named storms (with top winds of 39 mph or higher), of which four to eight will strengthen to a hurricane (with top winds of 74 mph or higher). Of those hurricanes, one to three will become major hurricanes (with top winds of 111 mph or higher, ranking Category 3, 4 or 5).



[SBSTTA 16 Adopts Recommendations on Marine and Coastal Biodiversity, Island Biodiversity](#)

Source: [Carib-coral-reefs list](#)



The 16th session of the Subsidiary Body on Scientific, Technical and Technological Advice (SBSTTA 16) to the Convention on Biological Diversity (CBD) adopted 15 recommendations, including a package of recommendations on marine and coastal biodiversity. It also addressed the in-depth review of the work programme on island biodiversity (PoWIB). The recommendations on marine and coastal biodiversity cover: ecologically and biologically significant marine areas (EBSAs); sustainable fisheries and adverse impacts of human activities on the marine environment; and marine spatial planning and voluntary guidelines for the consideration of biodiversity in environmental assessments in marine areas. The recommendation on EBSAs includes criteria for the description and prioritization of EBSAs, including lists and maps of suggested EBSAs developed in a series of regional workshops.

[\(Back to top\)](#)

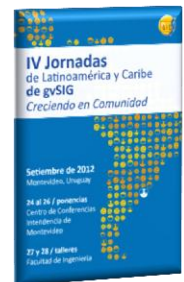
Americas: Conferences, SDI Events

4th Latin American and Caribbean Conference of gvSIG: "Growing in Community"

Source: Sergio Acosta y Lara

On September 24-28, 2012 will be held the 4th Latin American and Caribbean gvSIG Conference (LAC) [<http://www.gvsig.org/web/community/events/jornadas-lac/2012>], in Montevideo (Uruguay), under the theme "Growing in Community." The Latin American and Caribbean gvSIG Conference aims to provide a meeting place where technicians, researchers, developers, experts, and the Latin American community in general, meet in an environment with debates about free geomatics and gvSIG. This conference will join the Uruguayan 2nd gvSIG Conference, which will have the opportunity to reconvene participants of the first Uruguayan gvSIG 30, 2012.

conference, held in Montevideo - Faculty of Architecture in 2011. The submission period of communication proposals for the conference is now open, and these may be sent by email to jornadas.latinoamericanas@gvsig.org, to be reviewed by a scientific committee ahead of their inclusion in the Conference agenda. There are two types of communications: oral presentations, and posters. All information on how to submit communications is available at <http://www.gvsig.org/web/community/events/jornadas-lac/2012/Comunicaciones>. Abstract submission deadline is **July**



[\(Back to top\)](#)

Global Spatial Data Infrastructure

Latin America and the Caribbean Newsletter

YEAR 2012

[Year 2012](#) January February March April May [June](#) [July](#) [August](#) [September](#) [October](#) [November](#) [December](#)
[Year 2013](#) January [February](#) March [April](#) May June [July](#) August September October November December

JUNE 2012

| | | |
|--------------|------------------------------|--|
| 3-6 | Salvador Bahía, Brazil | 33rd Inter-American Congress on Sanitary and Environmental Engineering AIDIS |
| 4-5 | Bogotá, Colombia | Andean Geomatics 2012 |
| 4-6 | Rio de Janeiro RJ, Brazil | UN Conference on Sustainable Development (commonly called Earth Summit 2012) or 'Rio+20' |
| 4-7 | Las Vegas NV, USA | Hexagon 2012 |
| 4-8 | Turrialba, Costa Rica | 4th International Course on Adaptation to Climate Change: the Role of Ecosystem Services |
| 6-8 | Villa de Leyva, Colombia | 6th Symposium of the Latin American and Caribbean Society of Environmental History - SOLCHA |
| 7-8 | Buenos Aires, Argentina | First Workshop on Capture, Processing, Analysis and Dissemination of Geospatial Information |
| 11-15 | Savannah GA, USA | URISA Leadership Academy |
| 12 | Toronto, Ontario, Canada | Expedition 2012 - The Value of Location - DMTI User Conference |
| 12-13 | Buenos Aires, Argentina | First Latin-American Congress on Urban Ecology - Challenges and Development Scenarios for Latin American Cities |
| 12-14 | Boulder CO, USA | Call for Participation - Socioeconomic Benefits of Geospatial Information Contact: francoise.pearlman@ieee.org |
| 13-15 | New Orleans LA, USA | Insights 2012 User Conference |
| 14 | Caracas, Venezuela | ESRI National Users Conference (ENVI 2012) Contact: conferencia@esriven.com |
| 14-15 | Buenos Aires, Argentina | First International Course on Urban Ecology |
| 14-15 | Santa Cruz, Bolivia | 1st Latin American Congress on Surveying and Valuation Contact: congreso@tytredsur.org |
| 14-15 | Chicago IL, USA | Location Intelligence for Enterprise USA |
| 14-17 | Isla de Margarita, Venezuela | FUDcon LATAM Margarita 2012 |
| 15-23 | Rio de Janeiro, Brazil | Peoples Summit for Social Justice and Environment in Defense of the Commons (Rio +20) |
| 18-20 | Salvador de Bahía, Brazil | Seventh International Conference on "Geographical Analysis, Urban Modeling, Spatial Statistics" GEOG-AN-MOD 12 |
| 18-21 | Salvador de Bahía, Brazil | The 2012 International Conference on Computational Science and its Applications (ICCSA 2012) |
| 21-23 | Ciudad de México, Mexico | PMTour Mexico 2012 |
| 24-27 | Chicago IL, USA | 4th Urban Street Symposium |
| 25-28 | Vancouver BC, Canada | CARIS 2012 Conference |
| 25-29 | Buenos Aires, Argentina | Sixth Congress on Cartographic Science |
| 27-29 | Ciudad de Mexico, Mexico | National Users Meeting SIGSA-ESRI 2012 |
| *NEW* | | |

JULY 2012

| | | |
|--------------|-----------------------|--|
| 1-3 | Washington DC, USA | COM.Geo 2012 The 3rd International Conference on Computing for Geospatial Research and Application |
| 2-3 | Lima, Peru | TICAL 2012 |
| 3-5 | Tegucigalpa, Honduras | 15th Ibero-American Conference on Geographic Information Systems (CONFIBSIG) |
| *NEW* | | |
| 7-12 | San Diego CA, USA | The Survey Summit |
| 16-20 | New Orleans LA, USA | 2012 Coordinate Metrology Systems Conference (CMS) |
| 19-24 | San Diego CA, USA | Cadastral Summit - Annual ACSM Conference |
| 21-24 | San Diego CA, USA | ESRI Education User Conference |
| 21-24 | San Diego CA, USA | ESRI Homeland Security Summit |
| 22-24 | San Diego CA, USA | ESRI Business Summit |
| 23-27 | San Diego CA, USA | ESRI International User Conference 2012 |
| 25-28 | Porto Alegre, Brazil | XIII International Free Software Forum (FISL) |
| 26-27 | San Diego CA, USA | MAPublisher Training |

Global Spatial Data Infrastructure

Latin America and the Caribbean Newsletter

AUGUST 2012

| | | |
|-----------------------|----------------------------------|--|
| 6-9 | Memphis TN, USA | URISA/NENA Addressing Conference . For more information, visits www.nena.org . |
| 8-10 *NEW* | San Miguel de Tucumán, Argentina | 9th Biennial Colloquium on Territorial Transformations Footprints and uncertainty in the processes of territorial development |
| 13-15 | UN NY, USA | Second Session of the Committee of Experts on Global Geospatial Information Management |
| 13-17 *NEW* | Fortaleza, Brazil | Workshop on Integrated Management of Ecosystems and Water Resources in Latin America |
| 14-17 | Rio de Janeiro, Brazil | Latin America Geospatial Forum 2 nd Annual Latin American Conference and Exhibition on Geospatial Information, Technology and Applications. |
| 16-17 | Rio de Janeiro, Brazil | Conference on Geospatial for Defense and Homeland Security: Geo-Intelligence Latin America |
| 23-24 | Porto Alegre, Brazil | Seminar "Sharing Environmental Data in Latin America" |
| 27-31 *NEW* | Rio de Janeiro, Brazil | 3rd International Congress from Center for the Study of the Americas |

SEPTEMBER 2012

| | | |
|-----------------------|---------------------------------|--|
| 5-8 | Pittsburgh, PA, USA | 14th ACM International Conference on Ubiquitous Computing - UbiComp 2012 |
| 9-11 | Albuquerque NM, USA | IMTA (Americas) 2012 Conference and Member Showcase |
| 9-13 | Lake Buena Vista FL, USA | National States Geographic Information Council Annual Meeting |
| 11-14 | Corvallis OR, USA | ForestSAT 2012: A Conference Promoting Science-based Applications of Remote Sensing and other Spatial Data in Forested Systems |
| 13-14 | Philadelphia PA, USA | MAPublisher Training |
| 17-18 | Daytona Beach FL, USA | 6th Annual CFGIS Workshop |
| 18-21 | Alta Gracia, Cordoba, Argentina | Argentinean Congress of Remote Sensing 2012 |
| 19-21 *NEW* | Columbus OH, USA | Ohio GIS 2012 |
| 20-21 *NEW* | Denver CO, USA | GIS in the Rockies - 25 Years of Geospatial Collaboration |
| 20-22 | San Jose, Costa Rica | 12th International Congress on Surveying, Cadastre, Geodesy and Geomatics 2012 |
| 24-28 | Montevideo, Uruguay | XIX ISTRO Conference and 4th Meeting of the Uruguayan Society of Soil Science . More information: http://www.congresos-rohr.com/istro2012 |
| 24-28 *NEW* | Montevideo, Uruguay | 4th Meeting of Latin American and Caribbean gvSIG "Growing Community" |
| 26-28 *NEW* | Buenos Aires, Argentina | First Working Days of Latin American and the Caribbean Studies |
| 27-29 *NEW* | Tunja, Colombia | 2nd Conference on Geographic Pedagogy of the Colombian Association of Geographers (ACOGEG) Geographical pedagogy challenges to the XXI century |
| Sep. 30 – Oct. 3 | Long Beach CA, USA | Autovation 2012 |
| Sep. 30 – Oct. 4 | Portland OR, USA | URISA's Annual Conference for GIS Professionals |

OCTOBER 2012

| | | |
|-----------------------|--------------------------------|--|
| 1 | Houston TX, USA | Fall 2012 Meeting: New Positioning Techniques |
| 1-12 | Cartago, Turrialba, Costa Rica | First International Course on Using the SWAT Model as a tool for Hydrographic Basin Management |
| 1-3 | Bogotá, Colombia | Latin CACS/ISRM Conference |
| 1-4 | Portland OR, USA | URISA's Annual Conference for GIS Professionals |
| 1-5 | Medellín, Colombia | Latin American Conference on Informatics |
| 3-5 | Guadalajara, México | WODES 2012 |
| 4-5 | Buenos Aires, Argentina | 19th ESRI Users Latin-American Conference |
| 5-6 | La Paz, Bolivia | International Conference on Climate Change, Water and Wetlands |
| 8-12 | Guayaquil, Ecuador | Seventh Latin American Conference on Objects and Learning Technologies |
| 10-13 *NEW* | Oakland CA, USA | North American Association for Environmental Education (NAAEE) 41st Annual Conference |
| 15-17 | Dallas TX, USA | Field Service Interactive |
| 15-19 | Santiago del Estero, Argentina | 14th Humboldt International Meeting – "The Deglobalization Time" |

Global Spatial Data Infrastructure

Latin America and the Caribbean Newsletter

| | | |
|------------------------------|-------------------|--|
| 18-20 *NEW* | Santiago, Chile | UC-ICA Latinoamérican Conference |
| 23-25 | Mérida, Venezuela | 2nd Venezuelan Congress of Geographic Information Systems GIS (COVESIG) |
| 24-28 | Ibagué, Colombia | 6th International Course on Tools for Monitoring Carbon Abduction in Land Use Systems |
| Oct. 28 – Nov. 1 | Tampa FL, USA | MAPPS/ASPRS 2012 Specialty Conference |

NOVEMBER 2012

| | | |
|------------------------------|----------------------------|--|
| 1-4 | Vancouver BC, Canada | 37th Annual Meeting of the Social Science History Association – Historical Geography and Histories of Capitalism |
| 5-7 | San Diego CA, USA | SI World 2012 - Situational Intelligence |
| 5-9 | Santiago and Temuco, Chile | Symposium "Identities in Production: Production and Identified Movements Between Indigenous Peoples and Ethnic Minorities and Race in Latin America" Further Information: Dr. Luis Fernando Angosto Fernández (luis.angosto-ferrandez@sydney.edu.au), and Dr. Sabine Kradolfer (kradolfer.sabine@gmail.com). |
| 7-9 *NEW* | Cuenca, Ecuador | IEEE Latincom 2012 |
| 8-9 | Atlanta GA, USA | MAPublisher Training |
| 12-16 | Montego Bay, Jamaica | URISA's Caribbean GIS Conference |
| 14-15 | Bogotá, Colombia | 4G Conference and Latin American Exhibition |
| 14-16 | Buenos Aires, Argentina | 44th Meeting of the Directing Council PAIGH |
| 16 | Santiago de Chile, Chile | Third Colloquium "Geography, Social Movements and Territory" of the 4th Seminar on Critical Geography " Gladys Armijo Zuniga," - "Social Geography and Transformative Critical Pedagogy in Action" |
| 19-23 | Cayenne, French Guiana | Symposium SELPER 2012: Earth Observation for a Green Co-developed World Contact: contact@selper2012.com |
| 26-29 | Montevideo, Uruguay | 8th FIG Regional Conference |
| 27-29 *NEW* | Las Vegas NV, USA | Autodesk University |
| Nov. 4 - Dec. 4 | Buenos Aires, Argentina | FIG Commission 7th Annual Meeting |

DECEMBER 2012

| | | |
|--------------|-------------------------|---|
| 5 | Buenos Aires, Argentina | FIG Commission 7 International Symposium |
| 27-29 | Las Vegas NV, USA | IMTA (Americas) 2012 Strategic Planning Session |

YEAR 2013

[Year 2013](#) January [February](#) March [April](#) May June [July](#) August September October November December

FEBRUARY 2013

| | | |
|--------------|----------------|---|
| 11-13 | Denver CO, USA | International LIDAR Mapping Forum |
|--------------|----------------|---|

APRIL 2013

| | | |
|------------|--------------|---|
| 1-5 | Havana, Cuba | V Cuban Convention on Earth Sciences - Geosciences 2013 |
|------------|--------------|---|

JULY 2013

| | | |
|-------------------------|------------|---|
| To be determined | Lima, Perú | 14th Latin American Geographers Meeting (EGAL), Lima 2013, " Latin American Regional Knowledge Gathering " |
|-------------------------|------------|---|

[\(Back to top\)](#)



Global Spatial Data Infrastructure

Latin America and the Caribbean Newsletter

Please mention SDI-LAC as source of information in any correspondence you may have on items on this issue

To subscribe to SDI-LAC, please do so online at:
<http://www.gsdi.org/newslist/gsdisubscribe.asp>
Nancy Aguirre, PAIGH, Editor cnaguirre@ipgh.org
Global Spatial Data Infrastructure Association,
<http://www.gsdi.org>

DISCLAIMER:

GSDI, PAIGH and the Editor will not be held liable for any errors, mistakes, misprints or incorrect information. Copyright © 2012. All rights reserved.