

Global Spatial Data Infrastructure

Latin America and the Caribbean Newsletter

SDI-LAC

July

2011

Vol. 8, No.7

Spatial Data Infrastructure-Latin America and the Caribbean (SDI-LAC) is a regional, monthly, and free, electronic newsletter from the [Global Spatial Data Infrastructure Association](#) (GSDI). It focuses on aspects related with Spatial Data Infrastructure, and on GIS, remote sensing, and data management issues, related with SDI in Latin America and the Caribbean. It aims to raise awareness, provide useful information to strengthen national SDI initiatives, and support synchronization of regional efforts.



Global Spatial Data Infrastructure

GSDI

[GSDI Definition](#)

The [Pan-American Institute of Geography and History](#) (PAIGH), member organization of GSDI, and the [Permanent Committee on Geospatial Data Infrastructure for the Americas](#) (PC-IDEA), promote SDI development in the region. The newsletter is prepared by PAIGH for GSDI.

[Message from the Editor](#)

[Input to this Issue](#)

[Global and Regional SDI, News, Presentations](#)

[National SDI, News, Links, Presentations](#)

[Articles and Publications of the Month](#)

[Geospatial Research, Applications, Software, Data](#)

[Training and Funding Opportunities, Awards](#)

[Employment Opportunities](#)

[Other](#)

[Americas: Conferences, SDI Events \(Year 2011\) \(Year 2012\)](#)



Message from the Editor

Current SDI-LAC issue includes interesting assorted information. The **Global and Regional SDI** section comprises a short Report to the 3rd Preparatory Meeting of the Proposed UN Committee on GGIM prepared by GSDI President; the High Level Forum on GGIM to be held in the Republic of Korea on October; the Caribbean Regional Association for Integrated Coastal Ocean Observing (CaRA) international initiative; the UN International Conference on Space-based Technologies for Disaster Risk Management to be held on November in China; and the International LiDAR Mapping Forum (ILMF) to be held on January 2012 in USA. The **National SDI** section covers activities of Argentina, Brazil, Mexico, and Uruguay including: The Province of Catamarca (Argentina) SDI project; Release of Desktop GIS Version 2.2.0 developed through the Geographic Service Directorate of Brazil; First 2011 Session of the SNIEG's National Advisory Council of Mexico; and the launching of the online Beta Geographic Viewer as part of the Uruguayan Spatial Data Infrastructure. **Articles and Publications** of the month contains records on *the GIS Application to Delimit The Commonwealth of The Bahamas Maritime Boundaries*; Publication of first issue of the International Society for Digital Earth (ISDE) Newsletter; Articles on *Spatial cloud computing: how can the geospatial sciences use and help shape cloud computing*, and *The Semantics of Similarity in Geographic Information Retrieval*; and the release of the *Collection of Scientific Publications on IBGE's Ecological Reserve in*

Brasília. Geospatial Research and Applications comprise comments on the launching of the SAC-C Aquarius Argentinean Satellite; the Dominican Republic ongoing National Register Inventory, and initiatives of the Information Society and Knowledge Observatory (OSIC-DR); the Recent LiDAR Bathymetry of St. John & St. Thomas; and the New NASA Map of Tropical Forest Carbon Storage, and progresses on Space-Based Air Pollution Sensors. The **Training and Funding Opportunities** section encompasses calls for international and national initiatives, among them the Latin America Geospatial Forum's Geospatial Excellence Awards; the SFI (Ireland) Starting Investigator Research Grant (SIRG) Programme; the VI Workshop on LiDAR Measurements in Latin America; GIS Postgraduate Courses in Tucuman, Argentina; and a Master Program on Geographic Information Quality Assessment and Management of the University of Jaén (Spain). Finally, several **Events taking place in the Americas** are highlighted in the last section.

Back issues of the newsletter are at the GSDI website: <http://www.gsdi.org/newsletters.asp>

Editor, Nancy Aguirre, Pan-American Institute of Geography and History (PAIGH), <http://www.ipgh.org>, cnaguirre@ipgh.org



Global Spatial Data Infrastructure

Latin America and the Caribbean Newsletter

Input to this Issue

Sergio Acosta y Lara	Department of Geographic Information, Bureau of Surveying (MTO), SDI Working Group (GTIDE-AGESIC), Uruguay
Carolann Albury	Director, Bahamas National GIS Centre, Nassau, Bahamas
Santiago Borrero	Secretary General, Pan-American Institute of Geography and History, PAIGH, Mexico
Rinku Roy Chowdhury	Chair, Human Dimensions of Global Change Specialty Group of the Association of American Geographers, Assistant Professor, Department of Geography, Indiana University, Bloomington, IN, USA
Ludo Engelen	SADL, K.U.Leuven, (Spatial Applications Division Leuven), Leuven, Belgium
Kate Lance	SERVIR, NASA/USRA Coordinator, Huntsville, AL, USA
Harlan Onsrud	GSDI Executive Director
Abbas Rajabifard	GSDI President
Joaquín Segura	Master's Degree in Assessment and Management of the Quality of Geographic Information, University of Jaén, Spain
David Stevens	Programme Coordinator, UN-SPIDER, United Nations Office for Outer Space Affairs, Vienna - Beijing - Bonn

[\(Back to top\)](#)

Global and Regional SDI, News, Presentations

GSDI Short Report to 3rd Preparatory Meeting of the Proposed United Nations Committee on Global Geospatial Information Management (New York, United States, 4 - 6 April 2011)

Prepared by Abbas Rajabifard, GSDI President

The Global Spatial Data Infrastructure Association (GSDI) is a non-profit organization comprising agencies, firms, and individuals from around the world. The purpose of the organization is to promote international cooperation and collaboration in support of local, national and international spatial data infrastructure developments that will allow nations to better address social, economic, and environmental issues of pressing importance.

The GSDI Association continues to be highly active and engaged. The Association currently has been active for the preparation of the GSDI 13 World Conference (to be held in Canada, May 2012) as well as production the regional newsletters, launching of the small grants program, development of the Geographic Information Knowledge Network, International Geospatial Society (IGS) the new individual arm of the association, outreach and capacity building with several other organizations and development of a strategic plan for the organization.

GSDI is also supportive of international collaboration and inline with UN and other official agencies initiatives. As a result of this GSDI is supportive and continually participating and contributing to the UN new initiative to establish Global Geospatial Information Management Forum (GGIM). The Association is also a member of JBGIS (Joint Board of Geospatial Information Societies) and participating and contributing to the activities of this Joint Board. In addition, and in line with convergence strategy, GSDI has signed MoU with FIG during FIG Congress 2010 and the GSDI Association is in the discussion with ICA for a similar arrangement to make closer collaboration.

Planning for the Future: Throughout the past two years the leadership of the GSDI Association participated in several brainstorming sessions to develop a concise strategic plan with measurable objectives for the organizations. New or emerging initiatives suggested in the plan include institutionalizing a new individual membership arm of the organization, supporting standing committees as primary centres of membership activity and productivity, creating and maintaining a Geographic Information Knowledge Network (GIK Network), expanding the association web site capabilities, developing strategic alliances with other organizations, supporting SDI convergence among technical and policy approaches used within and among nations, encouraging expanded participation by the research and academic



Global Spatial Data Infrastructure Latin America and the Caribbean Newsletter

communities in the organization, and preparing and instituting an annual online survey for the membership [The complete Report may be found at the GGIM website [here](#)]

Technical papers and documentation for the meeting are found at: <http://ggim.un.org/meeting3.html>.

[High Level Forum on Global Geospatial Information Management](#)

Source: <http://ggim.un.org/>

The High Level Forum on Global Geospatial Information Management, will take place in Seoul, Republic of Korea, 24-26 October 2011. The forum is co-organized by the Korean National Geographic Information Institute (NGII Korea) and the UN Department of Economic and Social Affairs (UN-DESA), supported by the Permanent Committee on GIS Infrastructure for Asia and the Pacific (PCGIAP), the Permanent Committee for Geospatial Data Infrastructure of the Americas (PC-IDEA) and the Committee on Development Information, Science and Technology (CODIST) for Africa. Documentation of the meeting and a Draft-Program of Agenda may be found at: <http://ggim.un.org/forum1.html>



Caribbean Regional Association for Integrated Coastal Ocean Observing (CaRA)

Source: <http://cara.uprm.edu/> and <http://www.caricoos.org/drupal/>



Sustained and integrated observation of the coastal ocean is an international initiative that will provide substantial benefits to the economy, to security and environmental conservation. In the United States, coastal observing systems are being channeled through "regional associations" of users and data suppliers. Funding from the National Oceanic and Atmospheric Administration (NOAA), has allowed the organization of the Caribbean Regional Association for Integrated Coastal Ocean Observing. CaRA is developing the Integrated Coastal Ocean Observing System for the Caribbean (CarICOOS) covering Puerto Rico, the American Virgin Islands and the Island of Navassa west of Haiti. CarICOOS is the observing arm of the Caribbean Regional Association for Integrated Coastal Ocean Observing (CaRA) <http://cara.uprm.edu/>. This effort, funded by the NOAA IOOS office <http://ioos.noaa.gov/>, is one of eleven coastal observing systems and regional associations which along with federal agencies constitute the national coastal component of the US Integrated Ocean Observing System. For more information on the regional associations, please visit <http://usnfra.org/>. This web page brings together coastal ocean data and forecasts from a variety of sources including satellites, ocean instruments and numerical models to give the user an integrated view of past, present and forecasted ocean conditions in the US Caribbean region. Data are provided online by a number of organizations including NOAA, NASA, Universities and others to whom credit is given. Data and graphics, other than NOAA National Weather Service products, are presented as experimental products. CaRA assumes no responsibility for the validity of the data for planning or executing marine activities. For official information and forecasts on marine weather you should consult with the National Weather Service at <http://www.nws.noaa.gov/> and its San Juan office at <http://www.srh.noaa.gov/sju/>. For detailed information on these initiatives please log on to the CaRA (<http://cara.uprm.edu/>) and CarICOOS (<http://www.caricoos.org/>) web pages.

Global Spatial Data Infrastructure

Latin America and the Caribbean Newsletter

Final GEO-CZCP Workshop Report

Source: CaRA/CariCOOs VI Update

The report of the 3rd Workshop of the Group on Earth Observations-Coastal Zone Community of Practice (GEO-CZCP) is now available at the following web URL: http://www.czcp.org/workshops/Puerto_Rico/ws_report.php. The workshop was dedicated to "earth observations support for sustainable tourism in small island states", sponsored and conducted by CaRA, and took place in San Juan, Puerto Rico, March 9-11. Significant contributions were made by US Virgin Islands participants, including Jennifer Nugent-Hill of Tropical Shipping, Assistant Tourism Commissioner Brad Nugent, and University of Virgin Islands (UVI) Professors LaVerne Ragster and Simon Jones-Hendrickson.



Independent Galileo Indispensable: Experts

Source: GIM International News; <http://www.gim-international.com/>

Experts attending the INTERGEO Round Table in Karlsruhe, Germany, made it infinitely clear that the European satellite programme Galileo is essential. The unanimous conclusion was that Europe must be independent of other referencing systems such as America's GPS and Russia's GLONASS if it is to safeguard its future as a hub for research and business. Satellite navigation and geoinformation "are two areas that are increasingly converging. It is becoming ever clearer that interdisciplinary cooperation is crucial to enabling the development of new applications," said Ulrich Reinfried, consultant at the German Federal Ministry of Transport, Building and Urban Development (BMVBS). The debate will be continued at INTERGEO 2011 that will be held from 27 to 29 September 2011 in Nuremberg, Germany.

First Announcement: United Nations International Conference on Space-based Technologies for Disaster Risk Management

Source: David Stevens

For the upcoming United Nations International Conference on Space-based Technologies for Disaster Risk Management "Best Practices for Risk Reduction and Rapid Response Mapping" which is being organized by the United Nations Office for Outer Space Affairs (UNOOSA) and which will be held in Beijing, China from 22-25 November 2011 (within the same building of the UN-SPIDER Beijing Office). The three major topics will be: (i) Global datasets and information for risk reduction; (ii) Rapid response mapping: opportunities and challenges; and (iii) Networks: building upon and strengthening existing capacities. For further information, an online application form and guidelines (which will be available soon) please log on to <http://www.un-spider.org/conference-beijing-2011>. For specific contributions to the proposed themes/sessions, for proposing a topic for technical presentation and for proposing to provide sponsorship, please contact Mr. Shirish Ravan, shirish.ravan@unoosa.org and/or Ms. Li Suju, lisuju@ndrcc.gov.cn.

ILMF 2012 in Denver, Launches Call for Papers

Source: Ludo Engelen by way of Santiago Borrero

Image Courtesy of MLI using their Dynascan



International
LiDAR
Mapping Forum

Hyatt Regency Denver at Colorado Convention Center **DENVER USA** 23 – 25 January **2012**

Global Spatial Data Infrastructure

Latin America and the Caribbean Newsletter

The International LiDAR Mapping Forum [ILMF], the premier event for the LIDAR industry attracting professionals from all over the world and supported by the American Society for Photogrammetry and Remote Sensing (ASPRS) and the Management Association for Private Photogrammetric Surveyors (MAPPS) has announced a Call for Papers for the 2012 event, to be held in Denver, Colorado from January 23-25, 2012. The ILMF Technical Committee invites papers on a number of topics all of which can be found on the website http://www.lidarmap.org/conference/submit_papers.aspx. Abstracts should be no more than 250 words and can be submitted online at the aforementioned website address. The deadline is **September 7, 2011**. The 11th Annual Conference was held in New Orleans earlier this year and welcomed a total of 576 delegates from 33 countries who collectively gave rave reviews and feedback on a successful and prosperous 3 days. The ILMF is an essential event for anyone operating in or connected with mapping as it is applicable in many areas: forestry or landscape management; utilities including gas and power lines, roads and railways, and even along national coastlines and estuaries. A key focus for this event is the three day world class Technical Conference, where speakers from the international LIDAR community will be reporting on latest technology advances and recent projects, highlighting actual experiences and lessons learned in aerial and bathymetric LIDAR with a focus on mobile mapping. The Conference Program is complemented by Technical workshops which are hosted by exhibiting companies and are aimed at providing novice operators and their managers and potential purchasers of equipment with an understanding of the basic principles and fundamental benefits and technology associated with LIDAR whilst providing the more seasoned experts with up-to-date information on current developments. Further information on all aspects of ILMF 2012 can be found online at www.lidarmap.org or by emailing info@lidarmap.org. Contact: Caroline Hobden, Event Manager, International LiDAR Mapping Forum caroline.hobden@intelligentexhibitions.com

[\(Back to top\)](#)

National SDI, News, Links, Presentations

[SPATIAL DATA INFRASTRUCTURE OF THE REPUBLIC OF ARGENTINA \(IDERA\) - UNDER CONSTRUCTION](#)

CATAMARCA SDI Project

Source: <http://www.etisig.catamarca.gov.ar/> and Bulletin No. 6 December 2010



The Province of Catamarca (Argentina) SDI project is in a testing phase to enabling SDI services for heavy downloads' customers, specifically of vector and raster images. It also foresees outreach strategies on SDIs usefulness and relevance to addressing today's society needs, and to facilitating opportunities for public access to geographic information and geoprocessing services through the network. During this year, the aim is to complete all SDI services, due to that when the Catamarca Atlas portal was launched in December 2009, only two of the five intended services came into operation; thus the remainder services were to be launched gradually. In October 2010, it was launched the Official Website of the Interagency GIS Task Force - Spatial Data Infrastructure (CATAMARCA ETISIG-SDI www.etisig.catamarca.gov.ar), aimed at making available to Internet users all information and services produced by the

Global Spatial Data Infrastructure

Latin America and the Caribbean Newsletter

team. As innovation is considered a cornerstone, the team moves forward into a new paradigm for geospatial information management: the creation of the Provincial Spatial Data Infrastructure. In October 2010 two new Spatial Data Infrastructure services including, WFS (Web Feature Service), and WCS (Web Coverage Service), allowed providing access to vector and raster data (satellite imagery), and to essential provincial baseline data such as the political division, inter-jurisdictional boundaries generated by the General Administration of Cadaster, the road network created by the General Administration of Roads, geographic names of all localities, towns and places provided by the Provincial Directorate of Statistics and Censuses, and a georeferenced mosaic at scale of 1:100.000 based on Landsat images provided by the National Commission for Space Activities (in Spanish CONAE). The latter services added to those services already in operation in December 2009: the WMS (Web Map Server) and CSW (Catalogue Service Web).

[NATIONAL SPATIAL DATA INFRASTRUCTURE OF BRAZIL \(INDE\)](#)

[Desktop GIS Version 2.2.0 Released](#)

Source: <http://www.inde.gov.br/>



On May 25, 2011, it was launched the Desktop GIS version 2.2.0. This is a desktop environment Geographic Information System (GIS), which is being developed along with a Web GIS (GIS for web environment), in the context of the Department of Science and Technology (DST) GIS Project, through the Geographic Service Directorate (in Portuguese DSG) in partnership with the Science, Technology and Space Applications Foundation (in Portuguese FUNCATE) of the National Institute for Space Research (in Portuguese INPE), and the State University of Rio de Janeiro (UERJ). The objectives of the event were: to present the status of Desktop GIS and Web GIS development, releasing the GIS Desktop version 2.2.0, and promoting linkages between the Desktop GIS and Web GIS user community (current and potential), the Ministry of Defense, Army, Navy, Air Force, and other agencies and civil institutions.

[MEXICO, NATIONAL STATISTICAL AND GEOGRAPHIC INFORMATION SYSTEM \(SNIEG\)](#)

[First 2011 Session of the National Statistical and Geographic Information System National Advisory Council](#)

Source: <http://www.snieg.mx/>

First 2011 Session of the National Statistical and Geographic Information System (SNIEG) National Advisory Council was held on June 9 in Mexico City. The session was led by the Council's President, Eduardo Sojo Garza Aldape, convened and attended by representative Councils of the Federal Government and States, the Judiciary of the Federation, the Senate, and the Bank of Mexico. The purpose was to present the progress of SNIEG in 2010, Challenges for 2011, and the Draft National List of Indicators. Regarding progress, the Technical Secretary of the Council, Norberto Roque Diaz de Leon, noted the adoption by the Governing Board of 31 Technical Specialized Committees, the System's programmatic and policy documents, and INEGI (National Institute of Statistics and Geography) Annual Reports, among

other important decisions. He also referred to progresses in coordination and technical regulations, infrastructure, national interest information (NII), the importance of SNIEG regionally, and the System's Portal within the national information network.



Global Spatial Data Infrastructure

Latin America and the Caribbean Newsletter

[SPATIAL DATA INFRASTRUCTURE OF THE REPUBLIC OF URUGUAY \(IDEUy\)](#)

Beta Geographic Viewer Online

Source: Sergio Acosta y Lara ; <http://www.agesic.gub.uy/>

The screenshot displays the IDEUy Beta Geographic Viewer interface. At the top, the logo for 'ideuy BETA | Visualizador Geográfico' is on the left, and 'agesic | agencia de gobierno electrónico y sociedad de la información' is on the right. Below the logos are navigation buttons: 'Ir', 'Imprimir', 'Descargar', and 'Ayuda'. The main area features a map of Uruguay with several layers overlaid, including administrative boundaries, populated centers, cadastral divisions, infrastructure, hydrography, and land use. A search bar is located at the top left, and a scale indicator shows 'Escala 1: 6013350'. On the right side, there is a 'Capas' (Layers) panel with a list of layers and their status (checked/unchecked). Below the layers panel is a legend. At the bottom of the map area, the coordinates 'Latitud S 34° 20' 02.4"' and 'Longitud W 51° 08' 49.14"' are displayed. The interface also includes a scale bar (0 to 260 km) and a small inset map of Uruguay.

The Geographic Viewer Beta version is available at devisualizador.agesic.gub.uy. It allows visualizing spatial information including vector maps, satellite imagery, and orthophotos, as well as non-spatial information linked to them. This is the result of a great effort from many agencies, and a multidisciplinary team. The Geographic Viewer is part of the creation of [IDE Uruguay](#) (the Uruguayan Spatial Data Infrastructure), which aims to facilitate the effective and efficient production, distribution and use of GI (Geographic Information) required in a community or between communities. The Viewer is built with input from several agencies. For detailed information on its features and supported geographic information layers please log on [here](#).

[\(Back to top\)](#)

Articles and Publications of the Month

GIS Application to Delimit The Commonwealth of The Bahamas Maritime Boundaries

Source: Carolann Albury by way of Harlan Onsrud

Abstract: "Under the 1982 United Nations Convention on Laws of The Sea, Island States exercise exclusive jurisdiction over the living (Fisheries) and non-living (such as sulfides, cobalt-rich crusts and manganese nodules, and oil and gas) resources of the adjacent water column, seabed and subsoil to a maximum of 200 nautical miles from the territorial sea baselines. During the mid 1990's the Government of The Bahamas began its efforts to determine the Bahamas Maritime Boundaries. The primary objective of this national initiative was for the conservation, protection and management of marine resources such as fisheries, deep-sea mining or mineral exploration, laying of cables and pipelines, transit and other operations occurring within its boundaries as well as to guard against threats including illegal immigration, poaching and drug trafficking throughout the chain of islands in The Bahamas. With the advancement in the use of modern technologies such as Geographic Information Systems (GIS and Global Positioning

Global Spatial Data Infrastructure

Latin America and the Caribbean Newsletter

Systems (GPS), The Bahamas National Geographic Information Systems (BNGIS) Centre has provided invaluable assistance to the Ministry of Foreign Affairs to conduct desktop studies and field verification missions. As a result on 11th December 2008, the Government of The Commonwealth of The Bahamas deposited with the Secretary General, pursuant to Article 47, paragraph 9 of the Convention, a list of geographic coordinates of points defining the archipelagic baselines accompanied by an illustrative map. This paper highlights the use of GIS and customized software to advance work undertaken by the Delimitation Committee operating under the auspices of the Ministry of Foreign Affairs". [Article currently under approval by the Ministry of Foreign Affairs of Bahamas; contact: Carolann Albury, Director, Bahamas National GIS Centre, Nassau, Bahamas, email: carolannalbury@bahamas.gov.bs].

[International Society for Digital Earth \(ISDE\) Newsletter \(Vol.1 No.1, June 2011\)](#)

Source: International Society for Digital Earth by way of Santiago Borrero



INTERNATIONAL SOCIETY FOR DIGITAL EARTH

The International Society for Digital Earth (ISDE), founded in May 2006, has undergone five years of development and played an increasingly important role in advancing Digital Earth's progress. The ISDE secretariat is pleased to present to you a quarterly newsletter for providing up-to-date news from our society and also some information about the society's official publication, the *International Journal of Digital Earth* (IJDE). [Excerpt of ISDE Newsletter Editorial by WANG Changlin, Prof. Dr. Secretariat Director, International Society for Digital Earth, Executive Editor, *International Journal of Digital Earth*]

Spatial cloud computing: how can the geospatial sciences use and help shape cloud computing?

By Chaowei Yang, Michael Goodchild, Qunying Huang, Doug Nebert, Robert Raskin, Yan Xu, Myra Bambacus and Daniel Fay. Free accessible invited paper available online of the *International Journal of Digital Earth* (IJDE) Volume 4, Issue 4, 2011

Abstract: The geospatial sciences face grand information technology (IT) challenges in the twenty-first century: data intensity, computing intensity, concurrent access intensity and spatiotemporal intensity. These challenges require the readiness of a computing infrastructure that can: (1) better support discovery, access and utilization of data and data processing so as to relieve scientists and engineers of IT tasks and focus on scientific discoveries; (2) provide real-time IT resources to enable real-time applications, such as emergency response; (3) deal with access spikes; and (4) provide more reliable and scalable service for massive numbers of concurrent users to advance public knowledge. The emergence of cloud computing provides a potential solution with an elastic, on-demand computing platform to integrate – observation systems, parameter extracting algorithms, phenomena simulations, analytical visualization and decision support, and to provide social impact and user feedback – the essential elements of the geospatial sciences. We discuss the utilization of cloud computing to support the intensities of geospatial sciences by reporting from our investigations on how cloud computing could enable the geospatial sciences and how spatiotemporal principles, the kernel of the geospatial sciences, could be utilized to ensure the benefits of cloud computing. Four research examples are presented to analyze how to: (1) search, access and utilize geospatial data; (2) configure computing infrastructure to enable the computability of intensive simulation models; (3) disseminate and utilize research results for massive numbers of concurrent users; and (4) adopt spatiotemporal principles to support spatiotemporal intensive applications. The paper concludes with a discussion of opportunities and challenges for spatial cloud computing (SCC). [The full text may be downloaded at: <http://www.tandfonline.com/doi/pdf/10.1080/17538947.2011.587547>]

The Semantics of Similarity in Geographic Information Retrieval

By Krzysztof Janowicz, Martin Raubal, and Werner Kuhn. Research Article published in the *Journal of Spatial Information Science* (JOSIS), Number 2 (2011), pp. 29–57.

Abstract by the authors: Similarity measures have a long tradition in fields such as information retrieval, artificial intelligence, and cognitive science. Within the last years, these measures have been extended and reused to measure semantic similarity; i.e., for comparing meanings rather than syntactic differences. Various measures for spatial applications have been developed, but a solid foundation for answering what they measure; how they are best applied in information retrieval; which role contextual information plays; and how similarity values or rankings should be

Global Spatial Data Infrastructure

Latin America and the Caribbean Newsletter

interpreted is still missing. It is therefore difficult to decide which measure should be used for a particular application or to compare results from different similarity theories. Based on a review of existing similarity measures, we introduce a framework to specify the semantics of similarity. We discuss similarity-based information retrieval paradigms as well as their implementation in web-based user interfaces for geographic information retrieval to demonstrate the applicability of the framework. Finally, we formulate open challenges for similarity research [The complete article may be found at: <http://www.josis.org/index.php/josis>]

[Latin America and the Caribbean Atlas of our Changing Environment Selected as 2011 Outstanding Document](http://www.cathalac.org/)

Source: <http://www.cathalac.org/>



The, recently published in December 2010 and result of the collaboration between the United Nations Environment Programme (UNEP) and the Water Center for the Humid Tropics of Latin America and the Caribbean (CATHALAC) was selected by the Library Journal in the United States as one of thirteen "Highlights of Government Documents", 2011, in the category of international documents. The Library Journal May 2011 in its section "Best Sellers" also highlights the digital version of the [Latin America and the Caribbean Atlas of Our Changing Environment](http://www.cathalac.org/), "... available online (internet) as a resource that uses over 200 satellite images, hundreds of photos and graphics, numerous thematic maps and environmental profiles of the countries of Latin America and the Caribbean ... to provide a snapshot of the geography, climate, biodiversity and water resources, and human activities that degrade the environment." The Atlas is available in Spanish and English. The selection for this recognition award was made by the Library Journal Panel of Eminent Records, that with 133 years is the oldest and most respected publication in the field of libraries in the USA, besides being considered the "bible" of the world of libraries. Its review section evaluates material acquired by libraries, which represents about 7,000 books, including videos, databases, systems and websites annually.

Release of the Collection of Scientific Publications on IBGE's Ecological Reserve in Brasília

Fuente: <http://www.inde.gov.br/>

On June, it was released the first volume of the collection "The IBGE Ecological Reserve," which includes in 28 chapters, the knowledge produced by different studies on terrestrial biodiversity in the protected area maintained by the Institute and its importance in the "Cerrado" biome. The publication includes texts of 58 researchers linked to the IBGE, and other Brazilian institutions developing research in the reserve funded both by the Brazilian government and/or by other international agencies. The book may be purchased at the virtual IBGE Shop: <http://www.ibge.gov.br/lojavirtual/>. This first volume –of a total of three– of the series "The IBGE Ecological Reserve" has 28 chapters divided into four parts. The three initial parts depict the different levels of organization addressed in biodiversity studies: Landscapes, Terrestrial Ecosystems and Terrestrial Biota. The fourth section includes information and informatics on scientific collections of flora and fauna of the study area, and an appendix containing species



Global Spatial Data Infrastructure Latin America and the Caribbean Newsletter

lists of all terrestrial biotic groups studied in the Ecological Reserve of IBGE (in Portuguese RECOR). The RECOR, established in 1975, was the result of a pioneering project aimed at providing scientific support for sustainable territorial planning of the Midwest, the new agricultural frontier in the country at the time. Following guidelines established in the 1st World Conference on the Human Environment held in 1972 in Stockholm, IBGE turned his Research Geodesic Unit in Brasilia into a protected area and instituted a program of ecological research for the "Cerrado" biome, the second largest Brazilian biome. This biome occupies an area of almost two million square kilometers, is extremely rich in water resources and has unique biological characteristics in the world.

[\(Back to top\)](#)

Geospatial Research, Applications, Software, Data

Launch of SAC-C Aquarius Argentinean Satellite

Source: <http://www.idesf.santafe.gov.ar/>; <http://www.conae.gov.ar/>

This satellite to measure sea surface salinity was developed by the National Commission on Space Activities (in Spanish CONAE) of Argentina, in cooperation with NASA. It was launched into orbit on June 9, 2011, 11:20 hs, and the first satellite pass over Argentina was on June 10. Salinity controls ocean density, along with surface temperature. Sea density driven ocean circulation is involved in regulating Earth's climate including the global water cycle. For detailed information on the satellite please go to: <http://www.conae.gov.ar/satelites/sacdaquarius.html>



[National Register to Produce Inventory, Dominican Republic](#)

Source: <http://www.catastrolatino.org/>

The Dominican Republic National Registry is working on a strategic plan to provide an updated inventory of real estate throughout the country as a basis and support for public institutions in their plans aimed at supporting the country's progress. This was stated during the opening of the International Congress of Geomatics, Surveying and Valuation, organized by the CODIA (Dominican College of Engineers, Architects and Surveyors), by Bolivar Marte, director of that institution, who argued that information production has become the national development strategy line of action. It is essential to address a comprehensive cadastral project to enable the State knowing what is there, where it is, to whom it pertains and what it is worth, he said; adding that in addition to boosting revenue, information may assist in the registration and titling processes. Lawyer Marte said that an operational plan was drafted to achieve these goals, which requires a new approach focused on developing a multi-framed National Register similar to those implemented in other countries.

[Dominican Republic Information Society and Knowledge Observatory \(OSIC-DR\)](#)

Source: <http://osicrd.one.gob.do/>



The Dominican Republic Information Society and Knowledge Observatory (in Spanish OSIC-DR), was established by Decree No. 212-05 on April 11, 2005. It is a collegiate body with advisory status of the National Commission for Information Society and Knowledge (in Spanish CNSIC) whose operation is carried out under the aegis of the National Statistics Office (in Spanish NSO). Its primary mission is to become a focal point for information measurement, analysis, evaluation and dissemination on the development of the Dominican Republic Information Society and Knowledge. In fulfilling this mission, the OSIC-DR has become the focal point of a set of institutions generating statistical information related to the Information Society, offering a series of [indicators on Information and Communication Technologies](#). In addition, the Observatory provides [basic references](#) on the subject by allowing

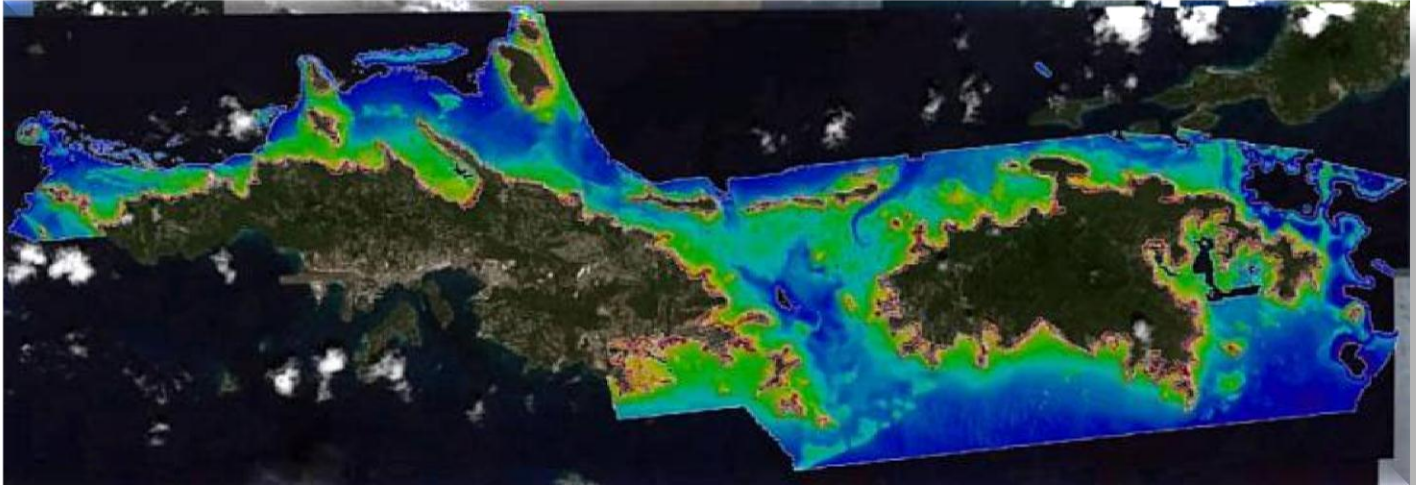
Global Spatial Data Infrastructure

Latin America and the Caribbean Newsletter

access to study documents, methodological manuals, and databases relating to the Information Society measurement and analysis. [OSIC-DR activities](#) are part of national, regional and global level initiatives on evaluating Information Society.

Recent LiDAR Bathymetry of St. John & St. Thomas

Source: CaRA/CariCOOs VI Update by way of carib-gis-users list

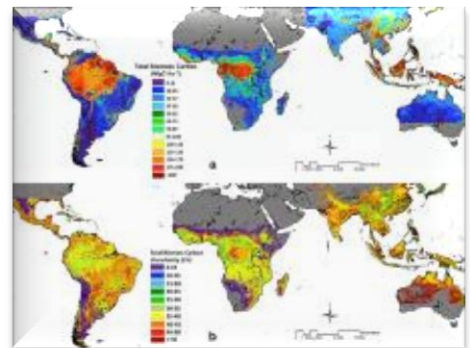


The National Oceanic and Atmospheric Administration (NOAA) has completed its latest sections of bathymetric studies using airborne LiDAR. Focusing on specific regions around St. John and St. Thomas, NOAA's Office of Coastal Survey managed the hydrographic survey to measure ocean depths for updating navigational charts. It claimed to cover some "areas that had not been surveyed since 1924, and acquired current data that will be used to manage some of the region's most important marine protected areas". Results of the survey are available at the following URL http://www.nauticalcharts.noaa.gov/staff/news/headline-usvi_reefs.html

New NASA Map Reveals Tropical Forest Carbon Storage

Source: WALIS June 2011 eNews

A NASA-led research team has used a variety of NASA satellite data to create the most precise map ever produced depicting the amount and location of carbon stored in Earth's tropical forests. The data are expected to provide a baseline for ongoing carbon monitoring and research and serve as a useful resource for managing the greenhouse gas carbon dioxide. The new map, created from ground- and space-based data, shows, for the first time, the distribution of carbon stored in forests across more than 75 tropical countries. Most of that carbon is stored in the extensive forests of Latin America. Web link to full article: <http://www.nasa.gov/topics/earth/features/earth20110531.html>



Paving the Way for Space-Based Air Pollution Sensors

Source: <http://www.spacedaily.com/>

The name of the experiment - Deriving Information on Surface conditions from Column and Vertically Resolved Observations Relevant to Air Quality (DISCOVER - AQ) - is a mouthful, but its purpose is simple. "We're trying to fill the knowledge gap that severely limits our ability to monitor air pollution with satellites," said James Crawford, the campaign's principal investigator and a scientist based at NASA's Langley Research Center in Hampton, Va. Since many countries, including the United States, have large gaps in ground-based networks of air pollution monitors, experts look toward satellites to provide a global perspective. Satellites have attempted to collect information about the main air pollutants that affect human health for more than a decade, yet they have struggled to achieve accurate measurements of the pollutants in the air near the surface - the air people actually breathe. The problem: Most satellite

Global Spatial Data Infrastructure

Latin America and the Caribbean Newsletter

instruments can't distinguish pollution close to the ground from that high in the atmosphere. In addition, clouds can block the view. And bright land surfaces, such as snow, desert sand, and those found in certain urban areas can mar measurements. DISCOVER - AQ will address such problems by helping researchers develop a three-dimensional view of how air pollutants are distributed and move between different levels of the atmosphere throughout the day. Scientists will use information collected during the DISCOVER-AQ campaign to improve measurements from existing satellites and to help establish parameters for future NASA satellite missions that will monitor air quality.

[\(Back to top\)](#)

Training and Funding Opportunities, Awards

Latin America geospatial Forum - Geospatial Excellence Awards

Source: Santiago Borrero



GIS Development is proud to announce Geospatial Excellence Awards for Best Applications in the Latin American Region. The aim is to promote and propagate the best applications of geospatial technologies all over Latin America. The awards will be granted in the form of a trophy during the days of Latin America Geospatial Forum to meritorious projects which have made significant and measurable contributions towards the development of new geospatial applications, or innovative modification of existing geospatial technology practices to substantially reduce project costs and bring in efficiency in the workflow. [Submit nominations](#). For further information contact: Anamika.Das@GISDevelopment.net

[SFI Starting Investigator Research Grant \(SIRG\) Programme](#)

Source: <http://www.sfi.ie/>



Call Open (Deadline for Proposals: **31 August**, 2011). The Science Foundation Ireland (SFI) Starting Investigator Research Grant (SIRG) Programme provides an opportunity for excellent early-career-stage investigators to carry out independent research in the fields of science and engineering that underpin biotechnology, information and communications technology, and sustainable energy and energy-efficient technologies. The award also provides funding for a postgraduate student, who will be primarily supervised by the Starting Investigator (SI). The SI will work with an associated mentor, who will provide the necessary support and infrastructure for the project to take place. Transnational mobility is

a new objective of the SIRG programme. Consequently, a significant number of awards in this Call will be offered to "transnational applicants". "Transnational applicant" will be a researcher of any nationality (including Irish) who has not resided in Ireland for more than a total of 12 months in the three years prior to the call deadline.

[VI Workshop on LIDAR Measurements in Latin America - First Announcement](#)

Source: <http://www.chacaltaya.edu.bo/> by way of Kate Lance

This Workshop will take place between September 26 to October 1, 2011 in La Paz, Bolivia. The main topics of this Workshop are: LIDAR technologies and methods; LIDAR applications in environmental sciences; LIDAR Networking; Synergy between LIDAR and others instruments; and regional and international cooperation in LIDAR technologies. LIDAR (Light Detection and Ranging) is an optical remote sensing technology that can measure the distance to, or other properties of a target by illuminating the target with light,





Global Spatial Data Infrastructure

Latin America and the Caribbean Newsletter

often using pulses from a laser. LIDAR technology has application in geomatics, archaeology, geography, geology, geomorphology, seismology, forestry, remote sensing and atmospheric physics. The specific goals of the Workshop are to promote communication and cooperation between scientific members of the LIDAR community in Latin America, and to plan future LIDAR research projects in the region. A training course (Escuela Básica de Lídares, open to students from Latin America) will fill the first three days of the Workshop; the next two days will be devoted to oral and poster presentations and the last day is reserved for touristic and social activities.

GIS Postgraduate Courses in Tucuman, Argentina

Source: <http://estadistica.tucuman.gov.ar/>

The Geographical Studies Institute of the National University of Tucuman (in Spanish UNT) calls for its postgraduate courses on: "GIS and thematic mapping applications" to be held on **July 4-8, 2011**; and "Remote Sensing and its geographic analysis applications" to take place on August 8-12, 2011. For more information and registration please contact: Geographical Studies Institute, San Miguel de Tucuman ieg.difusion@gmail.com

Master's Degree on Geographic Information Quality Assessment and Management - University of Jaén

Source: Joaquín Segura by way of Santiago Borrero



Máster
en Evaluación y Gestión de la Calidad
de la Información Geográfica

UNIVERSIDAD DE JAÉN

2011/2012 Evaluación de la Calidad de la I.G. (Título de Experto)
2012/2013 Gestión de la Calidad de la I.G. (Título de Experto)

The 1st edition of the Master's Degree on Geographic Information Quality Assessment and Management is organized for September 26, 2011 to July 6, 2012. Detailed course information may be found at <http://www.cartocalidad.com/es.html>. The course is designed, in content and form, based on many suggestions, and will be fully developed virtually, based on an ILIAS virtual campus platform of the University of Jaén. The deadline for preregistration is **September 9, 2011**, and the registration period is **September 12-23, 2011**.

[\(Back to top\)](#)

Employment Opportunities

Part Time Consultancy to Assist Regional Coordination and Management of the Project "Broad-scale Marine Spatial Planning of Mammal Corridors and Protected Areas in Wider Caribbean and Southeast & Northeast Pacific"

Source: <http://www.pnuma.org/>

A regional/international Consultant is sought to assist coordination, management and provide administrative and technical support to the UNEP-LifeWeb project: "Broad-scale Marine Spatial Planning of Mammal Corridors and Protected Areas in Wider Caribbean and Southeast & Northeast Pacific". The overall project duration is January 2011 – July 2012. Further details of the project are provided in the [ToR](#). Project implementation support will include: (a) Technical and logistical support to information gathering, data integration and visualization, organizing training workshops and demonstration projects, synthesis of project results and science-policy advice; (b) Project management and administrative support, funds management, technical and financial reporting, (c) Monitoring and Evaluation, (d) Internal and external project communication, information dissemination and outreach support. Duty station: Panama City at UNEP / Division of Regional Cooperation / Regional Office for Latin America and Caribbean premises, with travel and extended assignments to countries and UNEP offices taking part in the project, notably the UNEP-Caribbean Regional Coordinating Unit UNEP/CAR-RCU office in Kingston, Jamaica and the Permanent South Pacific Commission (in Spanish CPPS) office in Guayaquil, Ecuador. Candidates who meet the selection requirements are

Global Spatial Data Infrastructure

Latin America and the Caribbean Newsletter

requested to submit at the latest by **15 July 2011**: their curriculum vitae, a supporting letter of motivation in English, and names and contact details of two referees. The application should be emailed to: Isabel Martínez (isabelmartinez@unep.org) and Ole Vestergaard (ole.vestergaard@unep.org)

Postdoctoral Position: Socioecological Linkages between Food Security, Rural Livelihoods and Biodiversity Conservation in Greater Belo Horizonte, Brazil

Source: Rinku Roy Chowdhury



The Urban Ecosystems and Agroecology Lab (UEA) at Washington State University Vancouver invites applications for a postdoctoral researcher to take a leading role in an interdisciplinary project examining food security, rural livelihoods, and conservation ecology in Belo Horizonte, Brazil. Belo Horizonte has been widely recognized for the success of its “right to food” programs over the past 18 years. Under the leadership of a municipal Secretariat of Food Security, Belo Horizonte has seen 50%+ decreases in infant malnutrition and mortality, and directly serves 100s of thousands of residents in this city of 2.5 million every year. This program also works with local, small farmers (generally 5-20 ha) who live in the surrounding Atlantic Rainforest/Cerrado Savannah transition region, a recognized “biodiversity hotspot.” Initial research indicates that direct and indirect support from the city programs may be supporting more “wildlife-friendly” practices among partner farms than their neighbors. The postdoctoral associate will continue and expand on work with local farmers and the city government of Belo Horizonte, examining the socioecological links from urban food security to rural livelihoods and landscape biodiversity. While the specific focus will depend on the skill set and interests of the successful candidate, the candidate will work primarily on developing an understanding of the sociopolitical and ecological connections among farmers and the Belo Horizonte programs (developing “thick descriptions” in Geertz’s terminology). It is expected that the candidate will spend most of the one-year term of the position in Brazil. Accordingly, expertise in fieldwork (interviews, surveys, etc.) from political science, sociology, or anthropology is highly desired. Position may be extended to a total of up to three years, contingent on procurement of further funding. International candidates will be considered. Qualifications: PhD in Rural Sociology, Geography, Environmental Science, Agroecology, or related field; Experience gathering and analyzing qualitative and quantitative social research data/mixed methods; Fluency in Portuguese strongly preferred; candidates with strong fluency in a related language (e.g., Spanish, Italian) may be considered; Experience conducting independent international research; Comfort and skill with interdisciplinary research, communication, and collaboration, preferably in the area of sustainable agriculture or biodiversity conservation; and Ability and willingness to relocate to Belo Horizonte, Brazil for 6-8 months. To apply please submit a cover letter, CV, and three letters of reference to Dr. M. Jahi Chappell by email at m.jahi.chappell@vancouver.wsu.edu, or at 14204 NE Salmon Creek Avenue, Science Programs, Washington State University Vancouver, Vancouver, WA 98686. Further information on the UEA lab can be found at <http://directory.vancouver.wsu.edu/people/michael-chappell> and <http://research.vancouver.wsu.edu/uea-lab>

[\(Back to top\)](#)

Global Spatial Data Infrastructure

Latin America and the Caribbean Newsletter

Other

[The RADEI will Interconnect Dominican Republic Universities with Research Centers Worldwide](#)

Source: <http://www.cnsic.org.do/>

With the presence of President Leonel Fernandez was officially established the Dominican Education and Research Advanced Network (in Spanish RADEI), a non-profit organization comprised of seven universities and six national institutions that will be interconnected through high speed networks with their counterparts in the country and the most advanced academic and research centers from around the world. This Network, sponsored by the Ministry of Higher Education, Science and Technology (MESCyT) and the Dominican Telecommunications Institute (INDOTEL), is dedicated to promoting access to technology, scientific knowledge and research as a foundation to the improvement of higher education, culture and human development. Also, RADEI will direct its activities towards promoting science and technology progresses, and its members' capacity building and growth.



[\(Back to top\)](#)

Americas: Conferences, SDI Events

[13th Meeting of Latin American Geographers](#)

Source: <http://www.egal2011.geo.una.ac.cr/>



The meeting will take place from **25 to 29 July** in San Jose, Costa Rica. The meetings of Latin American Geographers (in Spanish EGAL) have been held every two years since 1987. The first was held in Aguas de Sao Pedro, a city of São Paulo, Brazil. The following meetings have taken place in Uruguay (Montevideo, 1989), Mexico (Toluca, 1991), Venezuela (Merida, 1993), Cuba (Havana, 1995) Puerto Rico (San Juan, 1997), Argentina (Buenos Aires, 1999), Chile (Santiago, 2001), Mexico (Merida, 2003), Brazil (São Paulo, 2005), Colombia (Bogota, 2007) and Uruguay (Montevideo, 2009). Historically, EGAL is based on encouraging a fair and open relationship between the different geography actors in the region and not on being a body that governs Latin American Geography. Among the objectives of the event are: Encouraging discussion of geographical works and research and the pursuit of Latin American Geography scientific debate; Promoting professionalization, research, teaching and outreach through agreements between different schools and institutions that bring together Latin American geographers; and developing a geography directed to major territorial, environmental, social and economic problems to and from the region. Contact: egal@una.ac.cr

[Geomatics Week, August 11-12, 2011, Bogotá, Colombia](#)

Source: <http://www.cce.gov.co/>



The overall objective of this event is learning on national and international developments of geomatics technologies, methodologies and applications in general, and its components in particular, with special emphasis on the use of satellite information for territorial development. In accordance with policies of the Colombian Space Commission (in Spanish CCE) and the Geographic Institute "Agustin Codazzi" (in Spanish IGAC) initiative, a biannual event called Geomatics Week has taken place since 2005, with an increasing participation and involvement of both national and international professionals and experts to these events. Geomatics Week 2011: "Satellite data to the service of regional development" is focused on territorial planning and ordering, risk management, and geospatial technology knowledge management. Contact: semanageomatica2011@igac.gov.co

[Latin American Geospatial Forum](#)

Source: <http://www.lagf.org/>



The forum will take place on August 17-19, 2011 in Rio de Janeiro, Brazil. Theme: Bringing Global Perspectives

Global Spatial Data Infrastructure

Latin America and the Caribbean Newsletter

to Local Action. The Latin American Geospatial Forum (LAGF) is the 1st Annual Latin American Conference and Exhibition on Geospatial Information, Technology and Applications. A joint initiative of GIS Development, CP IDEA (Permanent Committee for Geospatial Data Infrastructure of the Americas), and CRECTEALC (Regional Centre for Education in Space Science and Technology for Latin America and the Caribbean), the conference would highlight the need for firmly placing "geospatial knowledge" at the heart of economic and development agenda of nations. LAGF is an initiative that would provide a well-needed regional forum in Latin America for geospatial cooperation within Latin America and beyond the region. The conference, which will include plenary and keynote sessions, symposia, seminars, workshops, technical sessions, technology shows and a state-of-the-art exhibition, would bring all stakeholders in the geospatial domain: government, academia, researchers, students, and the industry - into one platform to come forward and share their learning and experiences with each other and rest of the world; and enter into meaningful dialogue towards development and strengthening of geospatial industry in Latin America.

[Call for Seminar on "Comparative History of Women in the Americas"](#)

Source: <http://www.ipgh.org/>

The Pan-American Institute of Geography and History (PAIGH), the Research Center on Latin America and the Caribbean, and the Mexican Federation of University Women, A.C. call for participation in the seminar "Comparative History of Women in the Americas" to be held on the week of September 26, 2011 in Ciudad Universitaria, Mexico D.F. Expert lectures will allow a comparative review of the history of women in the Americas. Detailed information including specifications for paper submission are found in the [Call](#).

[XVIII Latin American ESRI User Conference](#)

Source: <http://www.geotecnologias.com/>



Conferencia
Latinoamericana de
Usuarios Esri

The XVIII Latin American ESRI User Conference 2011 will be held in San Jose, Costa Rica, on September 28-30. This Conference is the premier event for ESRI users of Geographic Information Systems (GIS) in Latin America and the Caribbean. Contact: Lauc2011@geotecnologias.com. More information may be found at the [Conference Website](#).

[3rd gvSIG Latin America and the Caribbean Conference: "We Share the Project"](#)

Source: gvSIG News Office

The 3rd gvSIG Latin America and the Caribbean (LAC) Working Days will take place on October 12-14, 2011 in Foz do Iguaçu PR (Brazil), under the slogan "We Share the Project"



<http://www.gvsig.org/web/community/events/jornadas-lac/2011>). This Conference aims to providing a meeting place where technicians, researchers, developers, experts, and the Latin American community in general, may meet for debating about free geomatics and gvSIG. This Working Days will be at the same time the 2nd Brazilian gvSIG Conference, and the opportunity to reconvene participants of the 1st Brazilian gvSIG conference, held in Curitiba PR in 2010. Submission of proposals and communications is now open. Proposals may be sent by email to jornadas.latinoamericanas@gvsig.org, for review by the scientific committee before their inclusion in the Conference Agenda. There are two presentation types: technical session, and posters. All information on the communications' submission guidelines is available at <http://www.gvsig.org/web/community/events/jornadas-lac/2011/Comunicaciones>. Abstract submission deadline is **August 15**.

[8th Conference on Remote Sensing Education in the Mercosur area](#)

Source: <http://www.jornadaseduccion.unlu.edu.ar/>



The 8th Conference will be held on November 13-16, 2011 in the town of Alta Gracia, Province of Cordoba, Argentina. The Workshop on Remote Sensing Education in MERCOSUR "Geotechnologies and Education: New Interaction Spaces for the Global Society" arise as a need of the remote sensing academic and scientific community for a space that allows exchanging experiences between teachers and/or researchers, from state or private institutions of member countries of MERCOSUR. The Conference aim is to improve and expand remote sensing education, as well as encouraging the meeting of the various actors belonging to different educational levels, in order to disseminate and ensure familiarity with this technology that every day becomes more useful. Deadline for abstract submission is **August 12, 2011**.

Contact: informes@unlu.edu.ar

[\(Back to top\)](#)

Global Spatial Data Infrastructure

Latin America and the Caribbean Newsletter

YEAR 2011

[Year 2011](#) January February March April May June [July](#) [August](#) [September](#) [October](#) [November](#) December
[Year 2012](#) [January](#) February March [April](#) [May](#) June [July](#) August September October November December

JULY 2011

4-8	La Havana, Cuba	VIII International Convention on Environment and Development
4-8	La Havana, Cuba	III International Colloquium: Assessments of Hazard, Vulnerability and Risks for Disasters Reduction
5-8	Quito, Ecuador	Latin America and Caribbean Regional Consultation and Capacity-Building Workshop on Reducing Emissions from Deforestation and Forest Degradation in Developing Countries. Including on Relevant Biodiversity Safeguards
6 *NEW*	USA, Webinar	Strengthen Your ArcMap GIS with ERDAS IMAGINE
7-12	San Diego CA, USA	The Survey Summit Arranged by ESRI and the American Congress on Surveying and Mapping (ACSM)
9-12	San Diego CA, USA	2011 ESRI Homeland Security GIS Summit
9-12	San Diego CA, USA	2011 ESRI Education User Conference
10-11	San Diego CA, USA	ESRI Business GIS Summit
11-15	San Diego CA, USA	2011 ESRI International User Conference
UPDATED 13-14 *NEW*	Bogotá, Colombia	5th Annual Andean Energy Summit
14-15	San Diego CA, USA	MAPublisher Training
16-19	Big Bear Lake CA, USA	14th Annual Conference Society for Conservation GIS (SCGIS)
19-21	Mexico City, Mexico	Indigenous Peoples, Marginalized Populations and Climate Change Workshop
19-22	Mayaguez, Puerto Rico	SAGES/FIG Workshop on Curriculum and Core Survey Knowledge
19-22	Orlando, FL, USA	WMSCI 2011: 15th World Multi-Conference on Systemics, Cybernetics and Informatics
21-22	Rio de Janeiro, Brazil	Climate Change Conference 2011
23-27	Las Vegas NV, USA	Department of Defense (DoD) Worldwide Education Symposium 2012
25-29 *NEW*	San José, Costa Rica	Regional Meeting of Graduate Students of Latin America More at http://www.egal2011.geol.una.ac.cr
25-29 *NEW*	San José, Costa Rica	13th Meeting of Latin American Geographers: Consolidating bridges in the geography of Latin America
27-29	SJ Campos SP, Brazil	2nd Sao Paulo Regional School of High Performance - ERAD 2011 More at: www.lev.ieav.cta.br/erad2011
Jul 30 – Aug. 6	Fayetteville State NC, USA	6th ISPRS Student Consortium and WG VI/5 Summer School Advanced LIDAR Data Processing and Applications

AUGUST 2011

3-10	Heredia, Costa Rica	SIRGAS Meeting 2011
7-12	Rio de Janeiro, Brazil	International Conference on Atmospheric Electricity More at: http://www.icae2011.net.br/
10-12	Burnaby, Canada	WG IV/5 2nd International Workshop on Pervasive Web Mapping, Geoprocessing and Services, in Conjunction with 4th ICA Workshop on Geospatial Analysis and Modeling (ICA GAM 2011)
10-12 *NEW*	Seattle WA, USA	5th Annual HAZUS Conference
10-13	Cali, Colombia	XIX Colombian Congress of Geography Contact: 19CongresoGeografia@gmail.com
11-12 *NEW*	Bogota, Colombia	Geomatics Week
15-17	La Havana, Cuba	Course on Prevention and Preparedness for Emergencies and Disasters at the Primary Level of Health
15-18	New Orleans LA, USA	URISA/NENA Addressing Conference
16-18	São Paulo, Brazil	International Image Trade Fair
17-19	Rio de Janeiro, Brazil	Latin American Geospatial Forum

Global Spatial Data Infrastructure

Latin America and the Caribbean Newsletter

21-24 *NEW*	Curitiba PR, Brazil	XXV Brazilian Cartographic Congress III Brazilian Geoprocessing Congress I Brazilian Geointelligence Congress XXIV Expositarta
22	Chicago IL, USA	Call for Papers: CFP: The Second ACM SIGSPATIAL International Workshop on GeoStreaming (IWGS 2011)
23-25	Panama City, Panama	Expo Geomática 2011
24-26	Minneapolis, MN, USA	12th International Symposium on Spatial and Temporal Databases
25-26	Bogotá, Colombia	ESRI's Colombian User's Conference
NEW		
29-31	Calgary, Canada	WG V/3 Laser Scanning 2011
30-31	Sao Paulo, Brazil	ESRI's Brazilian User's Conference
NEW		
Aug 31-Sep 1	Broomfield CO, USA	5th Annual GeoGathering Conference

SEPTEMBER 2011

7-9 *NEW*	Washington DC, USA	ESRI Health GIS Conference
9-11	Denver CO, USA	State of the Map (SotM)
11-14	Santa Fe NM, USA	WG VIII/2 Symposium on "Advances in Geospatial Technologies for Health"
12-14	Washington DC, USA	Indoor Location Symposium
12-16	Denver CO, USA	FOSS4G 2011
13-15	Herndon VA, USA	FOSE Institute Geospatial Summit
13-15	St. Petersburg FL, USA	GIS in Public Transportation Conference
UPDATED		
15-16	Washington DC, USA	MAPublisher Training
16	Belfast Maine, USA	Call for Papers: 10th International Conference on Spatial Information Theory COSIT'11 Deadline: September 16th, 2011
17-20	Daytona Beach FL, USA	5th Annual Central Florida GIS Workshop
17-27	Chantilly VA, USA	2011 GXP User Conference Discover. Learn. Advance
19-23	Boulder CO, USA	OGC Technical and Planning Committee Meeting
22-23	Santa Fe, Argentina	15th National Congress on Photogrammetry and Related Sciences
NEW		
23	Boulder CO, USA	GEOSS Workshop XLIII – Climate
26-30	Mexico D.F., Mexico	Seminar on "Comparative History of Women in the Americas"
NEW		
28-30	San José, Costa Rica	18th ESRI's Latin-American Users Conference 2011
NEW		
29-30	Columbus OH, USA	The Ohio GIS Conference

OCTOBER 2011

3-7	Morelia, Mexico	XIX National Meeting SELPER-Mexico Contact: selper2011@ciga.unam.mx
3-4	Whistler BC, Canada	2011 GITA Pacific Northwest Chapter's 11th Annual Fall Conference
9-11	San Francisco CA, USA	Android Open Conference
9-12	Columbia SC, USA	ESRI Electric and Gas User Conference
NEW		
10-13	Buenos Aires, Argentina	Argentina Oil and Gas Expo 2011
NEW		
11-13	San Diego CA, USA	CTIA Enterprise and Applications
NEW		
12-13	Montreal, Canada	Geomatics 2011
12-14	Foz do Iguaçu PR, Brazil	3rd gvSIG Latin America and the Caribbean Conference: "We Share the Project"
NEW		
12-14	Madison WI, USA	NACIS2011: Cartography and Information Design
16-20	San Antonio TX, USA	GEOINT 2011
17-20	Ottawa, Ontario, Canada	GTEC - Ottawa - Canada's Government Technology Event
24-27	Houston TX, USA	GITA's GIS for Oil and Gas Pipeline Conference
NEW		
24-28	Denver CO, USA	WCRP OSC Climate Research in Service to Society



Global Spatial Data Infrastructure

Latin America and the Caribbean Newsletter

NOVEMBER 2011

1-4	Chicago IL, USA	ACM SIGSPATIAL GIS 2011
1-4	Indianapolis IN, USA	GIS-Pro 2011: URISA's 49th Annual Conference for GIS Professionals
3-4	Seattle WA, USA	MAPublisher Training
7-12	Pará - Belém (PA), Brazil	V International Symposium on Agricultural Geography and VI National Symposium on Agricultural Geography
8-11	Rio de Janeiro, Brazil	1st Latin American Seminar of Geography and Gender: Space, Gender and Power / Pre-meeting of UGI Regional Conference
8-11	Mar del Plata, Argentina	VIII Congress on Hydrocarbon Exploration and Development
NEW 9-11	Villa de Merlo, Provincia de San Luis, Argentina	1st National Workshop on Digital Mapping
NEW 13-16	Alta Gracia, Cordoba, Argentina	8th Conference on Remote Sensing Education in the Mercosur area
NEW 14-17	Herndon VA, USA	Pecora18 - ASPRS Fall Conference
14-18	Santiago, Chile	UGI 2011 Regional Geographic Conference
15-16	Huntsville AL, USA	Rocket City Geospatial and Alabama GIS Conference 2011
Nov. 28 – Dec. 10	La Havana, Cuba	Course: Psychosocial Attention in Disasters

YEAR 2012

[Year 2012](#) [January](#) February March [April](#) [May](#) June [July](#) August September October November December

JANUARY 2012

16-18	Los Angeles CA, USA	Eighth International Conference on Technology, Knowledge and Society
NEW 23-25	Denver CO, USA	International LiDAR Mapping Forum (ILMF)

APRIL 2012

NEW 19-21	Bahia Blanca, Argentina	IX National Conference on Physical Geography Contact: geografiafisica@uns.edu.ar
NEW 22-26	Kansas City MO, USA	MAGIC - 2012: Mid-America GIS Symposium

MAY 2012

NEW 8-10	New Orleans LA, USA	CTIA Wireless 2012
14-17	Quebec City, Canada	GSDI-13: Spatially Enabling Government, Industry and Citizens
TO BE DETERMINED	Rio de Janeiro, Brazil	UN Conference on Sustainable Development (commonly called Earth Summit 2012) or 'Rio+20'

JULY 2012

7-12	San Diego CA, USA	The Survey Summit
------	-------------------	-----------------------------------

[\(Back to top\)](#)



Global Spatial Data Infrastructure

Latin America and the Caribbean Newsletter

Please mention SDI-LAC as source of information in any correspondence you may have on items on this issue

To subscribe to SDI-LAC, please do so online at:
<http://www.gsd.org/newslist/gsdsubscribe.asp>
Nancy Aguirre, PAIGH, Editor cnaguirre@ipgh.org
Global Spatial Data Infrastructure Association,
<http://www.gsd.org>

DISCLAIMER:

GSDI, PAIGH and the Editor will not be held liable for any errors, mistakes, misprints or incorrect information. Copyright © 2011. All rights reserved.