

Global Spatial Data Infrastructure

Latin America and the Caribbean Newsletter

SDI-LAC

February

2011

Vol. 8, No.2

Spatial Data Infrastructure-Latin America and the Caribbean (SDI-LAC) is a regional, monthly, and free, electronic newsletter from the [Global Spatial Data Infrastructure Association](#) (GSDI). It focuses on aspects related with Spatial Data Infrastructure, and on GIS, remote sensing, and data management issues, related with SDI in Latin America and the Caribbean. It aims to raise awareness, provide useful information to strengthen national SDI initiatives, and support synchronization of regional efforts.



Global Spatial Data Infrastructure

GSDI

[GSDI Definition](#)

The [Pan-American Institute of Geography and History](#) (PAIGH), member organization of GSDI, and the [Permanent Committee on Geospatial Data Infrastructure for the Americas](#) (PC-IDEA), promote SDI development in the region. The newsletter is prepared by PAIGH for GSDI.

[Message from the Editor](#)

[Input to this Issue](#)

[Global and Regional SDI, News, Presentations](#)

[IGS News, Links, Publications](#)

[National SDI, News, Links, Presentations](#)

[Articles and Publications of the Month](#)

[Geospatial Research, Applications, Software, Data](#)

[Training and Funding Opportunities, Awards](#)

[Employment Opportunities](#)

[Other](#)

[Americas: Conferences, SDI Events \(Year 2011\) \(Year 2012\)](#)



Message from the Editor

Current SDI-LAC issue focuses on capacity building and knowledge production. The **Global and Regional SDI** section includes information on the GEOSS Portfolio for Science and Technology; VALID: a New Joint Project by JBGIS and UNOOSA; the Second Session of the Regional Platform for Disaster Risk Reduction in the Americas; and calls for worldwide pertinent workshops, conferences and meetings. **IGS** segment includes a Call for Consulting Services for a Cadastral Municipal Management Improvement Program in Argentina. The **National SDI** section highlights activities of Argentina, Brazil, Ecuador, and Mexico: these include installation of new permanent GPS stations at provincial level in Argentina; launching of new cartographic products by the Army and the Government of Bahia in Brazil; publication of a Methodology for Digital Cartographic Generalization in Ecuador; and publication of the Statistics and Geography Annual Program (PAEG) 2011, and approval of the Guidelines for the Development of SNIEG's Regulations in Mexico. **Articles and Publications** of the month contain an Article under review of the IJSDIR Journal on *Integrating Spatial Planning and Decision Support System Infrastructure and Spatial Data Infrastructure*; the New ESRI e-publication on *GIS Best Practices: GIS for Economic Development*; and the World Bank Publication on

Land Rights Recognition. **Geospatial Research and Applications** comprise the launching of new Atlases in Ecuador and Brazil; regional support for the creation of a GIS for Safe Hospitals during disasters; and announcements of new version releases such as TerraLook 2.0 Beta, GeoNode 1.0, and GeoServer 2.1-RC1, among other news. The **Training and Funding Opportunities** section encompasses calls for openings in Colombia, Paraguay, USA, Argentina, and Panama, among other training resources such as: the recently launched groundbreaking Participatory Spatial Information Management and Communication Training Kit; and the OGC Press Coverage, Tutorials, Videos, Presentations, Papers and Blogs. Finally, several **Events taking place in the Americas** are highlighted in the last section.

Back issues of the newsletter are at the GSDI website: <http://www.gsdi.org/newsletters.asp>

Editor, Nancy Aguirre, Pan-American Institute of Geography and History (PAIGH), <http://www.ipgh.org>, cnaguirre@ipgh.org

Global Spatial Data Infrastructure

Latin America and the Caribbean Newsletter

Input to this Issue

Thanks for their contributions to this SDI-LAC Newsletter issue to:

Mabel Alvarez	President International Geospatial Society (IGS), Argentina
Lilia P. Arias	Chief of IGAC Research and Development Center for Geographic Information (CIAF), and Vice President of the International Geospatial Society (IGS), Colombia
Santiago Borrero	Secretary General, Pan-American Institute of Geography and History, PAIGH, Mexico
Kirstin Dow	Associate Professor, Editor, <i>Weather, Climate, and Society</i> , Department of Geography and Carolinas Integrated Sciences and Assessments (CISA), University of South Carolina, Columbia, USA
Fernando R. Echavarria	Office of Space and Advanced Technology, Bureau of Oceans, Environment and Science, U.S. Department of State, OES/SAT, Washington, D.C., USA
Jose M. Espinoza	Universidad Juarez Autonoma de Tabasco, Mexico
Jiang Jie	Chair, ISPRS WG IV/1 on Spatial Data Infrastructure, National Geomatics Center of China, Beijing, China
Kate Lance	SERVIR Coordinator, NASA/USRA, Huntsville, AL, USA
Ricardo Mena S.	Head of Regional Office, UNISDR for The Americas, Panama
Luis Reynoso	Member of the International Geospatial Society (IGS), Argentina
Liliana L. Vasquez	Regional Office, UNISDR for The Americas, Panama
Kenneth Young	Chair and Professor, Department of Geography and the Environment, University of Texas at Austin, USA

[\(Back to top\)](#)

Global and Regional SDI, News, Presentations

[Announcing the GEOSS Portfolio for Science and Technology](#)

Source: <http://www.earthobservations.org/>



GEOSS At Work for
Science & Technology



A portfolio with attractive examples of how the Global Earth Observation System of Systems (GEOSS) can work for Science and Technology (S&T) communities has now been published as a [web site](#). This portfolio results from an activity promoted by the Road Map of the Group on Earth Observations [GEO Science and Technology Committee](#) (STC), which has the goal of stimulating the broader involvement of science and technology communities in GEOSS, both as users and as contributors. In many cases, new research is enabled and would not be possible without access to the Earth observation products accessible through the GEO portal. This portfolio shows how the products accessible through the GEOSS Common Infrastructure (GCI) work for S&T communities.

[Strengthening GEOSS through Long Term Data Preservation Guidelines](#)

Source: GEO News (Issue #12, 20 January 2011)



Following an extensive period of research and consultation, the GEO Task team for DA-09-01c released last month a document setting out guidelines for long-term data preservation. These guidelines, which are likely to evolve and

Global Spatial Data Infrastructure

Latin America and the Caribbean Newsletter

improve over time, could greatly contribute to the dependability and sustainability of GEOSS. By taking a generic approach and building on existing work in the area, the Task participants have been able to encompass the needs of the wider GEO community in a single Long Term Data Preservation, or LTDP, framework. A dedicated LTDP secretariat serves as a point of contact for LTDP activities and a [technical web site](#) has been established. This site is continuously updated with information on LTDP activities and could become a node for the exchange of technical information among international experts.

[Third Preparatory Meeting of the Proposed United Nations Committee on Global Geographic Information Management](#)

Source: <http://ggim.un.org/>



Tentative dates for this meeting are April 4-6, 2011, in New York, United States. The Invitation and Provisional Agenda for this Preparatory Meeting may be found at: <http://ggim.un.org/events.html>. The purpose of the Meeting is to review and finalize the GGIM report to be submitted to ECOSOC in July 2011, and discuss the future GGIM activities, including the [Global Forum](#) to be held in Seoul, Korea, on October 25-28, 2011.

VALID: a New Joint Project by JBGIS and UNOOSA

Source: UN-SPIDER Newsletter January 2011 Vol. 1/11

In July 2010, the Joint Board of Geospatial Information Societies (JBGIS) and the United Nations Office for Outer Space Affairs (UNOOSA) published "*Geoinformation for Disaster and Risk Management – Examples and Best Practices*", a compilation of case studies that provides information on what can be done with geoinformation in support of disaster and risk management – methods, systems, applications, experiences. As a next logical step it is planned to provide information on what is the value of geoinformation – an evaluation of benefits. The working title of this publication project is "*The Value of Geoinformation for Disaster and Risk Management (VALID) – Benefit Analysis and Stakeholder Assessment*". A publication to that end would further help to raise awareness in the political and programmatic environment and to set priorities in research and development. The intention is to produce evidence of the economic, humanitarian and organizational benefits which can be realized by applying geoinformation to disaster management. Two methods will be applied in this project to ensure a holistic view on the benefits of geoinformation for disaster management and best possible coverage of the disaster management cycle: a socio-economic benefit analysis of representative cases and a stakeholder assessment of reference geoinformation products. A call for papers and for participation in the expert stakeholder assessment will be issued around midyear 2011. To read more about the planned publication go to www.un-spider.org/publications/valid

[IGN-CNIG New Portal, Spain](#)

Source: <http://www.ign.es>

The National Geographic Institute of Spain (in Spanish IGN) launches a new web portal, which renews its contents, add new features and integrates information and services offered by the autonomous body, the National Center for Geographic Information (in Spanish CNIG), at <http://www.ign.es>. Now you may learn on the IGN and CNIG from their social networks on Facebook, Twitter and YouTube (videos).

Second Session of the Regional Platform for Disaster Risk Reduction in the Americas

Source: Ricardo Mena Speck and Liliana L. Vasquez by way of Santiago Borrero

The secretariat of the United Nations International Strategy for Disaster Reduction, Regional Office for the Americas (UNISDR Americas), and the Sustainable Development Department of the General Secretariat of the Organization of

American States (OAS/SDD), together with the Government of Mexico, as host country, are pleased to invite you to the "Second Session of the Regional Platform for Disaster Risk Reduction in the Americas" to be held on March 14-17, 2011, in



Global Spatial Data Infrastructure

Latin America and the Caribbean Newsletter

Nuevo Vallarta , Nayarit, Mexico. Returning to the results of the First Session of the Regional Platform and the recommendations made by the Advisory Council established for this second session, this meeting will develop around the following themes: (1) Acceptance and implementation of Disaster Risk Reduction (DRR) in adaptation to climate change (2) Measurable increases in investment in DRR, (3) Cities, schools and hospitals resilient to disasters, and (4) Institutions for DRR. It is expected to involve representatives of all governments of the countries of the Americas, regional intergovernmental organizations, international aid agencies, NGOs, universities and research and vocational training institutions, civil society organizations, the private sector, and other members of the ISDR System. You are invited to register for this Second Session of the Regional Platform by visiting the Web site established for that purpose in <http://eird.org/plataforma-2011/index.html>. For further information and consultation on logistics, please contact Mrs. Margarita Villalobos (mvillalobos@eird.org or logistica@eird.org) who will be available to address your concerns.

Call for abstracts for ISPRS joint Workshop on SDI, October 20-21, 2011, Guilin China

Source: Jiang Jie by way of Santiago Borrero

The ISPRS (International Society for Photogrammetry and Remote Sensing) Joint-WG Workshop on "Geospatial Data Infrastructure: from data



acquisition and updating to smarter services" will be held during 20-21 October 2011 in Guilin China. Detailed information can be found in <http://isprs-wg41.nsd.gov.cn/>. You are welcome to submit abstracts to the workshop via isprswg41@nsdi.gov.cn before **April 30**, 2011. The topics of the workshop will include: Data Acquisition and Updating; Database Creation and Maintenance; Smarter Geo-spatial Services and Applications; Standards and Liaison (including Cooperation and liaison with international efforts (GEOSS, Digital Earth, UNSDI, INSPIRE and GMES), and organizations (GSDI, WGISS, ICA, OGC, W3C, ISO and EuroSDR)

Call for participation: Workshop on Global Scientific Data Infrastructures: the big data challenges

Source: Kate Lance

Workshop on
"Global Research Data infrastructures:
The Big Data Challenges"

12-13 May 2011
Hotel La Palma, Capri, Italy



The workshop will be held on May 12-13, 2011 at the Island of Capri, Italy. The next generation of scientific data infrastructures has to efficiently and effectively support data intensive multidisciplinary research. In order to develop such data infrastructures several data, system, organizational and policy challenges must be successfully tackled. This Workshop will address the main data challenges. They include data modeling, data management, and data services challenges. The program features 15 invited high level scientists who will address specific specialized topics. The talks will briefly introduce a specific topic, describe the state-of-the-art of the research and practice in this topic focusing on open research issues and indicating research directions. Special sessions will be dedicated to lively discussions, exchange of ideas, etc. The Workshop is addressed to highly motivated researchers belonging to constituencies whose members use data-intensive methods (biologists, astronomers, etc.) as well as to constituencies whose members create such methods (computer scientists, engineers, etc.). The participation is free and the organizers will be able to offer coffee - breaks, working lunches, and a social dinner. The participants have to cover their own travel and lodging expenses. To register to the Workshop, fill in the online form at: <http://datachallenges.isti.cnr.it/>. Upon registration, you will receive an email confirmation message. Registration for the workshop is limited by the venue capacity. Early registration is strongly recommended. Deadline for receiving the registration form: **12 March** 2011. Organizing Committee: Costantino Thanos, CNR-ISTI, Italy Costantino.Thanos@isti.cnr.it; Yannis Loannidis, University of Athens, Greece yannis@di.uoa.gr.

Global Spatial Data Infrastructure

Latin America and the Caribbean Newsletter

[INSPIRE Conference 2011 in Edinburgh, Scotland](http://inspire.jrc.ec.europa.eu/)

Source: <http://inspire.jrc.ec.europa.eu/>

The INSPIRE Conference 2011 will take place from 27th June to 1st July 2011 in Edinburgh, Scotland. The theme of this year's edition is "INSPIREd by 2020 - Contributing to smart, sustainable and inclusive growth". In 2010, the European Union renewed its commitment to 'knowledge-based' sustainable development by putting forward three mutually reinforcing priorities in the Europe 2020 Strategy1:

- Smart growth: developing an economy based on knowledge and innovation;
- Sustainable growth: promoting a more resource efficient, greener and more competitive economy;
- Inclusive growth: fostering a high-employment economy delivering social and territorial cohesion.

This edition of the INSPIRE Conference offers an opportunity to explore INSPIRE's contribution to Europe's 2020 strategic goals and to root its further implementation and development in the EU 2020 follow-up programmes. In addition, the INSPIRE Conference will examine and report on the progress being made in the development and implementation of INSPIRE Directive and Implementing Rules. The deadline for submission of abstracts is **24th February** 2011. Contact: Karen Fullerton, Spatial Data Infrastructures Unit, karen.fullerton@jrc.ec.europa.eu. For detailed information please log on to the [Conference website](#).



The 7th International Symposium on Digital Earth: the Knowledge Generation

Source: ISDE Secretariat



The 7th International Symposium on Digital Earth (ISDE7) with the theme of the Knowledge Generation will be held in Perth, Australia from 23-25, August 2011 in conjunction with the Western Australian Land Information System (WALIS) Forum and the State Natural Resources Management (NRM) Conference. The International Symposium on Digital Earth is a series of symposia, which is an important academic event of the International Society for Digital Earth. The International Society for Digital Earth is a non-political, non-governmental and not-for-profit international organization. To date, the series of International Symposium on Digital Earth was successfully convened in China (1999), Canada (2001), the Czech Republic (2003), Japan (2005), USA (2007) and China (2009), respectively. WALIS Forum is one of the premier GIS conferences in Australia. WALIS will be celebrating its 30 year anniversary with a world-class conference featuring international speakers, workshops on key issues, and a trade exhibition. Submission deadline: **February 28**, 2011. Please submit abstracts and biography online via melissah.johnston@walis.wa.gov.au or walis@walis.wa.gov.au. Details of the submission process, including an abstract template and guidelines are available at http://www.isde7.net/call_for_papers. Abstract please refer to the conference website (www.isde7.net) or contact Melissah Johnston melissah.johnston@walis.wa.gov.au or via walis@walis.wa.gov.au

[XXV IUGG General Assembly](http://www.iugg2011.com/)

Source: <http://www.iugg2011.com/>

The Organizing Committee for the 2011 International Union of Geodesy and Geophysics (IUGG) General Assembly, on behalf of the Australian and New Zealand scientific communities, invites researchers world-wide to Melbourne, Australia from June 28 to July 7, 2011, to participate in the multi-disciplinary conference "Earth on the Edge: Science for a Sustainable Planet", on cutting edge science. Detailed information on the conference may be found at: <http://www.iugg2011.com/>



Global Spatial Data Infrastructure

Latin America and the Caribbean Newsletter

Call for Presentations: GEOVIQUA First Workshop

Source: GEO News (Issue #12, 20 January 2011)

The program GeoViQua –QUALity aware Visualization for the Global Earth Observation System of Systems– is organizing a workshop in Barcelona, Spain, on 18 February to address such issues as quality parameterization and elicitation, quality representation and visualization, quality standards and frameworks, GEO architecture (portals, clearinghouses and pilots), and exploitation of GEOSS data in relevant communities. To learn more please visit the web site <http://www.geoviqua.org/workshop/> or send an email to workshop@creaf.uab.cat

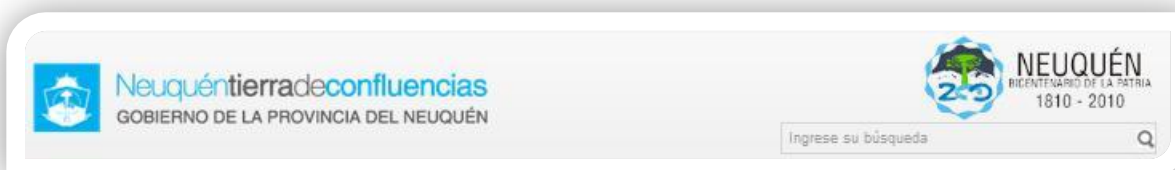


[\(Back to top\)](#)

IGS News, Links, Publications

Call for Consulting Services in the framework of the Municipal Management Improvement Program BID 1855-OC-AR) in the province of Neuquén, Argentina

Source: Luis Reynoso by way of Mabel Alvarez



The overall project objective is the strengthening and modernization of the Provincial Directorate of Cadastre and Land Information for efficiency in the management of cadastral information on their geometrical, legal and economic aspects, through an integrated system called "Land Cadastral Infrastructure" (in spanish ITC); which will contribute to the continuous updating, availability and exchange of cadastral information (alphanumeric, graphical and documentary images) enabling the smooth exchange of information with municipal cadastres as well as the Provincial Directorate of Revenue (in Spanish DPR) and the Real State Registry (in Spanish RPI). Detailed information may be found at the following website: http://w2.neuquen.gov.ar/index.php?option=com_content&view=article&id=1123:modernizacion-de-la-dpceit-e-integracion-con-los-catastros-municipales&catid=11:concursos-y-licitaciones&Itemid=42. The call can be accessed electronically until **February 14**, 2011 at 11:00 hours (local time in Argentina) or www.upefe.gov.ar www.neuquen.gov.ar. Applications will be accepted until **February 24**, 2011 at 11:00 hours (local time in Argentina).

[\(Back to top\)](#)

National SDI, News, Links, Presentations

SPATIAL DATA INFRASTRUCTURE OF THE REPUBLIC OF ARGENTINA (IDERA) - UNDER CONSTRUCTION

[New Permanent GPS Station in the Province of Chaco](#)

Source: <http://www.ign.gob.ar/>

Provincial Water Administration (in Spanish APA) in the province of Chaco installed the second GPS station, donated by the National Geographic Institute (in Spanish IGN) in coordination with the Provincial Directorate of Land Registry and Mapping (in Spanish DPCyC). The system will involve major technological update for improving knowledge about the area and assisting the professional development of surveyors, engineers, physicists and geographers. The strategy of incorporating GPS technology from the Chaco provincial government is a valuable tool for the creation of a Geographic Information System (GIS) for decision making.



Global Spatial Data Infrastructure

Latin America and the Caribbean Newsletter

[NATIONAL SPATIAL DATA INFRASTRUCTURE OF BRAZIL \(INDE\)](#)

[Bahia Government and Army Launched New Cartographic Products](#)

Fuente: <http://www.inde.gov.br/>

The Superintendency of Social and Economic Studies of Bahia (in Portuguese SEI), the Department of Planning (in Portuguese SEPLAN) and the Directorate of Army Geographical Service (in Portuguese DSG) presented the second stage of the Update of the State Cartography Project. During the launching meeting, it was detailed the pilot project on topographic maps and their application possibilities, taking as example the town of Luis Eduardo Magalhaes in western Bahia. A new map of Bahia is being coordinated by SEI, in partnership with other agencies of the State Commission of Cartography (in Portuguese CECAR), and the DSG is responsible for validation of the contracted products and for the pilot project on topographic maps. At the meeting, the experts at DSG revealed the potential of topographic maps and how to extract information from its database. With the information available in map products, the government may avoid mistakes in construction, prevent calamities, improve tax collection, and assist in development of urban master plans, among others. The products of the new map of Bahia may be applied in the works of state departments such as Planning, Environment and Finance, and municipal governments. The rationalization of public resources is a major benefit to the government.



[ECUADORIAN GEOSPATIAL DATA INFRASTRUCTURE \(IEDG\)](#)

[Methodology for Digital Cartographic Generalization: Spatial Resolution 1:250,000](#)

Source: <http://www.geoportaligm.gob.ec/>

There are several papers on generalization. However, due to the complexity of the problem it has been developed a pilot project to establish a generalization methodology that allows continuous database management with a multi-scale purpose. The generalization methodology is for scales of 1:50,000 to 1:250,000, and is based on appropriate information tools to help solving cartographic generalization problems.



[NATIONAL STATISTICAL AND GEOGRAPHIC INFORMATION SYSTEM OF MEXICO \(SNIEG\)](#)

[Statistics and Geography Annual Program \(PAEG\) 2011 Published in the Official Journal of the Federation](#)

Source: <http://www.snieg.mx/>

In compliance with the provisions of transient article ten of the [National Statistical and Geographic Information System of Mexico \(in Spanish SNIEG\)](#) Act, on January 18, 2011 it was published in the Official Journal of the Federation, the Statistics and Geography Annual Program (in Spanish PAEG) 2011, which was previously approved by the Governing Board of the National Institute of Statistics, Geography, and Informatics (in Spanish INEGI) on December 9, 2010. The PAEG is the system's operating program, and aims to set the schedule of specific activities to be carried out during 2011 by the SNIEG's State Units Members in regard to the design, acquisition, production, updating, organizing, processing, integration, compilation, publication, dissemination and preservation of national interest information. Also, this program contains activities that will allow the Institute to meet its responsibility on the system's development regulation and coordination. [See the Statistics and Geography Annual Program \(PAEG\) 2011](#)



[Approved the Guidelines for the Development of Regulations for the National Statistical and Geographic Information](#)

Source: <http://www.snieg.mx/>

On 9 December, 2010 the Governing Board approved the Guidelines for the Development of SNIEG's Regulations. This release provides state units a tool for the development of policy documents related to the production, integration

Global Spatial Data Infrastructure

Latin America and the Caribbean Newsletter

and dissemination of statistical and geographical information, and to establish the provisions governing the participation of State Units on corporate bodies and to shaping the Regulation Compilation System. Guidelines for the development of SNIEG's regulations, which incorporates aspects of Coordination, Technical and Public Information Service, is a step in the development of the system and to establishing procedures for the approval of regulations, the standards content structure, technical standards, policies, guidelines, and rules and manuals to be developed in the committees of the National Information Subsystems. This will allow the regulatory system to develop in a uniform manner so that information producers and generators are able to target their geographic and statistical activities towards meeting the objective of the system in providing quality, accurate and timely information. The Guidelines are available through SNIEG's portal in the section: "*La normatividad del SNIEG > Sistema de compilation normativa*" (SNIEG's regulations > Regulation Compilation System).

[\(Back to top\)](#)

Articles and Publications of the Month

Integrating Spatial Planning and Decision Support System Infrastructure and Spatial Data Infrastructure

By Luc G.J. Boerboom. Article under review of the *International Journal of Spatial Data Infrastructures Research (IJSDIR)*, Vol. 6 (2011)

Abstract by the author: I present a definition of Spatial Planning and Decision Support Systems Infrastructure (SPDSS-I) for spatial evaluation of forest vulnerability to climate change in different European regions in different countries. In order to confirm our believe that we are involved in a project that develops such an infrastructure; I first search, in vein, for existing definitions. Then I construct a definition of SPDSS-I based on definitions of information infrastructure and Spatial Data Infrastructure (SDI) and definitions of decision support systems and planning support systems. Spatial planning and decision support systems infrastructure differs from spatial data infrastructure. The ultimate goal of SDI is the exchange of data. The ultimate goal of SPDSS-I is the exchange of judgment. Unlike SDI, SPDSS-I assumes only the exchange of meta-data, judgments and intermediate analytical results, because of the context specific nature of decision problems and the mostly local data useful to these problems. Therefore interoperability has very different meaning for SPDSS-I compared to SDI. I conclude that although several trends, including our own work, point in the direction of SPDSS-I developing, there are no such infrastructures yet. Given the drive of the SDI development community towards service oriented architecture, the apparent interest to support decision making, the few publications about spatial planning and decision support systems infrastructure, the trends pointed out in this paper, it would be good to cultivate more academic and professional debate to give direction to the development of spatial planning and decision support systems infrastructure [The complete article may be found at:

<http://ijsdir.jrc.ec.europa.eu/index.php/ijsdir/article/view/File/223/269>

New ESRI e-publication on GIS Best Practices: GIS for Economic Development

Source: <http://www.esri.com/>

A new collection of articles shows how organizations are using GIS technology to help businesses and communities thrive. Economic developers need effective decision-making tools that help them conduct analysis, display and disseminate results and make informed decisions about where to locate new businesses or grow existing ones. GIS technology is proven to be powerful and effective in delivering these functionalities to help economic developers sustain economic recovery and growth. GIS tools can provide the necessary platform for visualization, modeling, analysis, and collaboration. The included articles outline these trends and best practices and illustrate how GIS is being utilized as a platform to help economic developers achieve their goals [The collection of articles may be found at: <http://www.esri.com/library/bestpractices/economic-development.pdf>]

World Bank Publication on Land Rights Recognition

Source: FIG e-Newsletter January 2011

The World Bank (WB) has published a book on Innovations in Land Rights Recognition, Administration, and Governance in the World Bank Studies series. The publication is an out come from the FIG/World Bank conference that was held in March 2009. The publication is based on an on-going partnership between the World Bank, International Federation of Surveyors (FIG), the Global Land Tool Network and Food and Agriculture Organization of the United Nations (FAO) which provides tools that can help to address land governance in practice and at scale. The

Global Spatial Data Infrastructure

Latin America and the Caribbean Newsletter

WB hopes that this publication will increase awareness of and support to the successful implementation of

innovative approaches. More information:
http://www.fig.net/news/news_shortstories.htm
([Back to top](#))

Geospatial Research, Applications, Software, Data

[Downloadable Shapefile of Chile from GISDATA Website](#)

Source: <http://snitchile.blogspot.com/>

From GISDATA CHILE website you may download some coverages in Shapefile format of the country. The available coverages were prepared based on digital cartography of the World Map scale 1:1,000,000 (DCW, Digital Chart of the World), a project undertaken by ESRI (Environmental Systems Research Institute, Inc.) for the US Defense Mapping Agency of the United States (DMA).

[Guayas River Basin Project, Ecuador](#)

Source: <http://territorial.sni.gov.ec/>

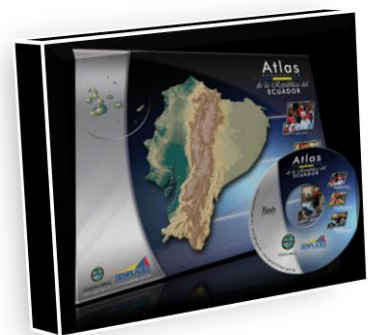


The project on "Geoinformation Production for Land Management and Valuation of Rural Land of the Guayas River Basin, at scale of 1:25,000" socialization program was held at the Military Geographic Institute of Ecuador on December 2010, including presentations of the following topics: Generation of Geoinformation for Land Management at the National level; Contributions of the project "Generation of Geoinformation for Land Management at the National level" to the National Information System (SNI); and IGM's Participation to the National Project, among others.

[Geographic Atlas of the Republic of Ecuador](#)

Source: <http://territorial.sni.gov.ec/>

On November 2010 was launched the Geographic Atlas of the Republic of Ecuador, with the presence of several authorities, at the Military Geographical Institute of Ecuador. Publication of this updated atlas made possible to organize a large number of thematic cartographic information, through research and reflection on current social, economic and environmental issues such as population, education, basic needs, social investment, health, macroeconomic indicators, availability of natural resources, deforestation of tropical rain forests and mangroves, agricultural frontier expansion, the increasing problems of desertification areas, population growth in hazardous areas, increased pollution of all kinds, and resource efficient management and proper targeting towards social investment, among others.



[New Edition of National Atlas Reveals Brazilian Territory Changes](#)

Source: <http://www.ibge.gov.br/>

The Brazilian Institute of Geography and Statistics (in Portuguese IBGE) released the Milton Santos National Atlas of Brazil, which updates the geographical information about the Brazilian territory. The piece articulates texts and satellite images obtained by advanced techniques, enabling an enlarged observation of the complex reality of the country. The Atlas grasps two important processes of the Brazilian dynamics in the first decade of this century: the improvement of life conditions for a great part of the population, and the valorization of the territory potential. Responsible for the dissemination of the geographical knowledge of Brazil among students of all educational levels, the Atlas groups the largest set of data produced by the country's



Global Spatial Data Infrastructure

Latin America and the Caribbean Newsletter

public institutions, contributing as a strategic tool for future planning. It includes 548 maps -237 more than the previous edition (2000)-, 76 graphs, eight tables, six photos and 14 satellite images. The Atlas concluded that, concerning the spatial organization of the Brazilian urban picture, the enlargement and densification of networks are a mark. Although Brazilian urbanization is concentrated along the shore, when considering density, the size of centers and the location of the main city network diffusion knots, it is possible to observe changes in the territorial organization of labor, together with decentralization of production and reinforcement of spatial inequalities. The publication is organized around four major axes: Brazil in the world; Territory and environment; Society and economy; and Geographical networks.

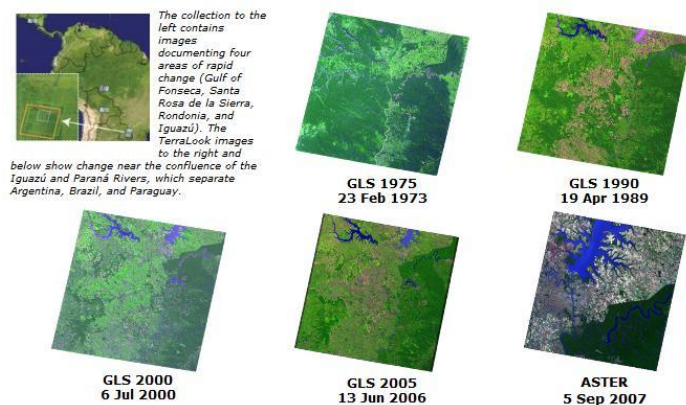
[PAHO/WHO and CATHALAC Support Creation of GIS for Safe Hospitals during Disasters](#)

Source: <http://www.cathalac.org/>

In the context of the work strategy for safe hospitals, the Pan-American Health Organization (PAHO) and the Center for the Humid Tropics of Latin America and the Caribbean (in Spanish CATHALAC) have joined forces to develop a Geographic Information System focused on Disasters and Safe Hospitals. The first activity to define technical concepts and variables to be included in the system was conducted under a technical workshop on December 9 and 10, 2010 at the premises of CATHALAC, Panama City, with participation of representatives of the Ministries of Health of Guatemala and El Salvador, PAHO and CATHALAC. The pilot project will be developed during 2011 in various departments of El Salvador and Guatemala, and could be expanded later nationally and to other countries; this pilot will serve as a prototype to be replicated in Central America, and later elsewhere in Latin America and The Caribbean. The project's goal is to have a web-based geographic system or platform, to assist the Ministries of Health and other health sector entities to make timely decisions on response to emergencies and disasters, as well as to reduce risk in health facilities, and thus to make hospitals safe from disasters.

Announcing TerraLook version 2.0 Beta

Source: Fernando R. Echavarría



TerraLook and SERVIR users are invited to review the newest beta version of TerraLook software, Version 2.0 (beta), and to report on their experiences. The US Agency for International Development (USAID) funded the latest upgrade through the SERVIR project; all data are free. Version 2 is a complete overhaul of the previous version and provides a much friendlier interface with a greatly improved 'look and feel'. All of the capabilities from V1.1 are available, plus new ones and other improvements. [Download TerraLook 2.0 Beta](#) (Readme files and full Help documentation is available for English and Spanish). TerraLook is a collaborative project that provides access to satellite images for users that lack prior experience with remote sensing or Geographic Information System (GIS) technology. Formerly known as

the Protected Area Archive, TerraLook combines collections of georeferenced JPEG images with a set of simple visualization and analysis tools. This allows users to explore the data and employ it for useful purposes in a variety of disciplines including conservation, development planning, education, urban studies, disaster planning and response, and others. It may be of particular use in developing countries that may have less capacity to purchase or work with remote sensing data. For detailed information on TerraLook and its new features please log on to: <http://terralook.sourceforge.net/>. TerraLook V2.0 (final) will be released soon and will be available in both English and Spanish. This version will be followed soon by V2.1. TerraLook images can be ordered from, and additional information can be found at <http://terralook.cr.usgs.gov/>

[OpenGeo Announces the Release of GeoNode 1.0](#)

Source: <http://www.directionsmag.com/>

[OpenGeo](#), a leader in open source geospatial software development and support, announced the 1.0 release of GeoNode, a new platform designed to promote the development of Spatial Data Infrastructures (SDIs) worldwide. The GeoNode



Global Spatial Data Infrastructure

Latin America and the Caribbean Newsletter

platform is comprised of powerful open source software components including [GeoServer](#), [GeoNetwork](#), [Django](#), and [GeoExt](#). This stack enables users to publish, discover, evaluate, and use spatial data through the web while maintaining OGC standards and ISO compliance. GeoNode also includes web cartography tools to compose, style, and publish maps in a range of formats, ensuring that data can be explored, shared, and repurposed. Furthermore, a system of user accounts and profiles will allow organizations and communities to facilitate discussions, identify reliable contributors, encourage collaborative participation, and secure data according to their needs. "This release is an important milestone for us, our collaborators at the World Bank, and everyone interested in promoting SDI. It represents additional commitment by the developers to the stability of the project. It is also the culmination of over a year and a half of hard work and collaboration on the part of developers, designers, domain experts, and users," said Sebastian Benthall, Project Manager of GeoNode at OpenGeo. Major contributions from a number of organizations were essential to the release of GeoNode 1.0. These include [OpenGeo](#), the [World Bank](#), the [Global Facility for Disaster Reduction and Recovery](#), [United Nations International Strategy for Disaster Reduction](#), and [Global Earthquake Model](#). The project has also greatly benefitted from volunteer efforts from the open source community.

[GeoServer 2.1-RC1 Released](#)

Source: <http://blog.geoserver.org/>

The GeoServer community is happy to announce that the first release candidate of GeoServer 2.1 is now available for download. The team has been busy working on some great new improvements and features since 2.1-beta3. As always, a number of other bug fixes and improvements have made it into this release. Check out the [change log](#) for all new and noteworthy changes. [Download](#) and try 2.1-RC1 now. You can help us reach the final 2.1 release by reporting any bugs in the [issue tracker](#) and sending feedback to the [mailing list](#).



[Russia to Provide Open Access of Satellite Data](#)

Source: <http://beta.gisdevelopment.net/>

Website of Russian Federal Space Agency (Roscosmos) is designed to provide open access of satellite data, according to the head of Roscosmos website, Yuri Urlichich. Roscosmos continuously images earth surface from its satellites: Resurs-DK1, Meteor-M-1 and Monitor-E. Urlichich said, "The cost of the Roscosmos website is approximately RUB 10 million (approx three hundred thousand dollars). Roscosmos in association with the Scientific Research Institute (in Russian NII) of precision instruments have developed this website. It has been standardized on the standard ISO 15000." According to RIA Novosti report, Information on the website will be updated on daily-basis. Later on, information from Russian Navigation Satellite System (GLONASS) also will be available here.

[\(Back to top\)](#)

Training and Funding Opportunities, Awards

[Scholarships for Specialization Program on Geographic Information Systems \(GIS\), Colombia](#)

Source: Lilia Patricia Arias by way of Santiago Borrero



The Geographic Institute "Agustin Codazzi" of Colombia (in Spanish IGAC), through its Research and Development Center on Geographic Information (in Spanish CIAF) promotes and coordinates activities of technology transfer in geographic information management and applications using Remote Sensing, Geographic Information Systems (GIS) and related technologies, for which it offers advanced training programs in partnership with universities, and other short courses not leading to qualifications. The Specialization Program will be held in Bogota, Colombia from April 11 to November 18, 2011, with duration of 32 weeks. Registrations are open until **February 18, 2011**. The course aims to train professionals involved in the implementation of GIS as a tool to improve information management processes to

Global Spatial Data Infrastructure

Latin America and the Caribbean Newsletter

support decision-making, research projects, and in particular its application in land use planning, in the context of Spatial Data Infrastructures. The course has the support of the Inter-American Development Bank (IDB), through fellowships to be awarded to professionals from institutions in IDB member countries. Professionals opting for the scholarship must submit, in addition to general requirements, the formal assent of the legal representative of the institution where they work today. For more information, see the item "TRÁMITES Y SERVICIOS/CAPACITACIÓN ACADÉMICA (CIAF)" displayed on the website of the IGAC: <http://www.igac.gov.co> or contact: cursosciaf@igac.gov.co. For more courses see also the [CIAF's Academic Program 2011](#).

Travel Support Funds: IAI Training Institute on Land Use Change Analysis and Water and Food Security, Paraguay

Source: Kenneth Young

The Training Institute will be held from 6-15, April, 2011 at the National University of Asuncion (UNA) in Asuncion, Paraguay. Travel Support Funds are available for travel support, including airfare, lodging and meals per diem. Travel arrangements will be made for all successful applicants through the IAI (Inter-American Institute for Global Change Research).



The goal of this Training Institute is to provide scientific information and knowledge to support land use planners, decision-makers, and stakeholders on rural development, land use change and conservation in the La Plata Basin (LPB) region. Scientific information and data on land use, hydrology, and climate will be integrated to guide sustainable social and economic rural development in the region. Participants will also become familiar with data analysis tools and evaluate the consequences of land use change on water and food security. The Training Institute will explore the interactions between natural and human components of agroecosystems in the LPB, taking advantage of an interdisciplinary approach for land use change analysis using existing data sets. The Training Institute will be conducted in English or Spanish and participants must be proficient in one and have a sound understanding in the other language. Any inquiries concerning this IAI Training Institute should be sent to: iai_ti_paraguay2011@dir.iai.int.

Application Process: http://iaibr1.iai.int/TrainingOpportunities/IAI_TI_Paraguay2011 (English version) http://iaibr1.iai.int/TrainingOpportunities/IAI_TI_Paraguay2011_SP (Spanish version). Complete applications must be submitted no later than **9 February 2011**, 14:00 hs São Paulo, Brazil. Applications received after this deadline or incomplete will not be considered. Decisions on the application will be communicated to all applicants by the end of February 2011. Training Institute Site: <http://iaibr3.iai.int/wiki/bin/view/TIParaguay2011>.

Graduate Student Assistantships - Deadline: Feb 15

Source: Kirstin Dow



The Department of Geography at the University of South Carolina (USC) is seeking graduate students for assistantships in actively funded, integrative climate research. Faculty expertise within the department includes: applied climatology, statistical and dynamic climate downscaling; historical climatology; synoptic climatology; boundary layer modeling and air pollution; and drought. Many of these projects are collaborations with other natural and social scientists within the department including specialists in biogeography, cartography, decision support, geographic information sciences, hazards, water resources, and vulnerability. There are almost a dozen faculty members with climate-related interests in geography and many more across campus. If you are excited about understanding the climate and its impacts on environment and society, visit <http://www.cas.sc.edu/geog/> or contact:

Greg.carbone@sc.edu - climate variability and change

mockcj@mailbox.sc.edu - historical, hurricanes, and synoptic climatology

hiscox@mailbox.sc.edu - microclimatology

Kdow@sc.edu - human dimensions, climate vulnerability and adaptation

The application deadline for the Fall of 2011 is **February 15, 2011**.

Global Spatial Data Infrastructure

Latin America and the Caribbean Newsletter

University of West Indies hosts tenth UN-SPIDER Regional Support Office

Source: UN-SPIDER Newsletter January 2011 Vol. 1/11

On 8 October 2010 the University of the West Indies (UWI) and the UN Office of Outer Space Affairs signed the cooperation agreement that established the tenth UN-SPIDER Regional Support Office (RSO). UWI is the first university to host an RSO and to contribute its experience and capabilities to the UN-SPIDER program in this role. The Disaster Risk Reduction Centre at the University of the West Indies, which hosts the UN-SPIDER RSO, reports to the Department of Geomatics Engineering and Land. It is a multi-disciplinary Centre of Excellence in the field of disaster risk reduction and disaster management in the Caribbean and globally, especially in Small Island States. The particular strength of the Centre and its new role as an RSO lies in its capacity-building facilities, namely its GIS and photogrammetry laboratory and its short-courses in all areas of geoinformatics. The university also offers a BSc in Geomatics and an MSc in Geoinformatics. It has faculty members and technical staff in remote sensing, GIS, and GPS, and disposes of the respective soft- and hardware infrastructure, and of base data, DEM, and Landsat imagery of most of the Caribbean countries.

Scholarships for Master Program in Space Applications on Early Warning and Emergency Response 2011, Argentina

Source: <http://www.conae.gov.ar/>



The Institute of Space Studies Mario Gulich (in Spanish IG) calls for grants proposals to complete a Masters in Space Applications on Early Warning and Emergency Response (in Spanish AEARTE), at the Theophilus Tabanera Space Center of the National Commission on Space Activities (in Spanish CONAE) in the province of Cordoba, Argentina. Among other benefits, the Master gives students the opportunity to spend part of their training and their research activities at institutions of the Republic of Italy, as a result of close cooperation on space between the two countries. The Master is jointly organized by the CONAE and the Faculty of Mathematics, Physics and Astronomy (in Spanish FaMAF) of the National University of Cordoba (in Spanish UNC). The two-year Master includes research and development work, and the presentation of a thesis. It is intensive and requires dedication; thus CONAE grants scholarships to selected applicants for the Master's development period. Detailed information, including requirements and documentation needed to apply for admission to the Masters program of Argentinean and Latin American candidates may be found at: <http://www.conae.gov.ar/prensa/LlamadoConcursoMasterAEARTECiclo2011.pdf>. Deadline for applications is **April 30, 2011**. Additionally, all documentation submitted on paper must be emailed in digital format (scanned) before the deadline, to ig@conae.gov.ar, including the Subject: "Postulante Maestria Aearte 2011" and the name and surname of the applicant. For any clarification or additional information visit the website www.conae.gov.ar or e-mail to ig@conae.gov.ar

Diploma on Integrated Water Resource Management UNU / INWEH - CATHALAC

Source: CATHALAC List



Course Objective: Students will learn the different elements of the Integrated Water Resource Management through knowledge of scientific principles and techniques and alternative approaches to address water management, and provide practical and realistic solutions according to different realities. All the above will be accomplished through continuous online interaction between participants and leading experts on each of the topics. This Diploma is aimed at professional staff of different government levels, private companies, hydroelectric companies related to water supply and sanitation services, farmers, members of local agencies, water

Global Spatial Data Infrastructure

Latin America and the Caribbean Newsletter

managers, NGOs and interested staff opportunities and knowledge of best practices in water management. The deadline for submission of application and documentation is **March 15, 2011**; the beginning of the 2011-2012 Program is on April 11, 2011 and completion is on March 2012. The Diploma program comprises 10 courses which content was organized through extensive consultation of both individual experts, academics from universities, and members of private industry and government, working in various sectors with common interests and experience in managing water resources. The total program cost is US\$4,000.00. Registration: <http://www.cathalac.org/Educacion/registro/> (Select Diploma in Integrated Water Resource Management). For more information contact CATHALAC's United Nations Regional Water Virtual Learning Centre for Latin America and the Caribbean at: <http://www.cathalac.org/Diplomados> or contact educacion@cathalac.org

Seminar Presentations: Applications of Space Technologies for Improvement of Production Process Management

Source: <http://snitchile.blogspot.com/>

The seminar held during November, 2010 at the University of Santiago de Chile, was organized by the Chilean Space Agency and supported, inter alia, by the Pontifical Catholic University (Santiago), the Catholic University of Temuco, and the University of Playa Ancha. Main objectives of the meeting were to provide a knowledge platform and expertise on space remote sensing technologies, to integrate innovative and practical ways to improve production processes for private and public management. To view and download presentations, please visit the website of the Chilean Space Agency (To access the site [click here](#)).



Groundbreaking Participatory Spatial Information Management and Communication Training Kit launched

Source: <http://pgis.cta.int/>



The first ever training kit for Participatory Spatial Information Management and Communication was launched after weeks of excited pre-ordering online. Co-published by The Technical Centre for Agricultural and Rural Cooperation (CTA) and the International Fund for Agricultural development (IFAD), this training kit is a unique product that can be tailored to meet the learning needs of the individual, group or organization. "This is a hugely exciting training tool for the development sector," commented Giacomo Rambaldi, Senior Programme Coordinator at CTA. "It means that employees can now get the best available training tailored to meet their individual needs." The training kit comprises 15 modules, each presented through a series of units. They cover the entire spectrum of good developmental practice. The modules deal with topics such as fundamentals of training, ethics

and community groundwork and processes as well as the more technical low-, mid- and high-tech participatory mapping methods. The Training Kit is featured on the [CTA Publications catalogue](#). Available in English and Spanish, it is aimed at technology intermediaries working in multidisciplinary teams, and for those required to deliver training on the practice or facilitate the process in the field. The benefits of this type of mapping are numerous. Mapmaking is considered as a step in a broader process resulting in community empowerment by adding value and authority to local spatial knowledge. If you are interested in getting a copy of the Training Kit you may send an e-mail to Murielle Vandreck (vandreck@cta.int) adding PGIS-TK (English / Spanish) in the e-mail subject line.

OGC Press Coverage, Tutorials, Videos, Presentations, Papers and Blogs

Source: OGC® News December 2010

See the OGC Press Coverage page for an updated chronological listing of articles, blog entries and papers about OGC and OGC standards [<http://www.opengeospatial.org/pressroom/coverage>]

See also the growing collection of OGC tutorials

[<http://www.ogcnetwork.net/tutorials>]. Participate in OGC-related social media:

- **Twitter:** Register to receive twitter notices of OGC press releases and other "tweets" about OGC. Follow OGC's Steven Ramage -"OGC_Steven"- on Twitter [<http://twitter.com/opengis>]



Global Spatial Data Infrastructure

Latin America and the Caribbean Newsletter

- *LinkedIn*: If you're on LinkedIn, we invite you to join the OGC staff's two LinkedIn Groups - the Open Geospatial Consortium (OGC) Group [<http://www.linkedin.com/groups?mostPopular=&qid=55322>] and the Geospatial Data Integration Group [<http://www.linkedin.com/groups?mostPopular=&qid=873817>].
- *OGC Forum*: OGC provides the OGC Forum [<http://www.ogcnetwork.net/forum/>], which is actually a collection of forums on a variety of topics, mostly technical. Some of the topics are quite active, and all are followed by OGC staff and by experts from the OGC's member organizations. Those who post questions and comments can expect prompt responses from at least one knowledgeable person.
- *Delicious*: Several OGC staff and members are working to make OGC documents more accessible to everyone using Delicious, a social bookmarking tool. We have links to about 300 references to articles, editorials, and OGC Engineering Reports on the use of OGC standards. See recent OGCdoc bookmarks [<http://delicious.com/tag/ogcdoc>] and see details about this on the OGC Document Catalog page on OGC Network [<http://www.ogcnetwork.net/ogcdoc>]

For pages bookmarked by OGC's Carl Reed, see also CarlReedOGC's wms Bookmarks. Members: If you write or find interesting technical articles, editorials etc., on the use of OGC standards, please let Raj Singh [rsingh@opengeospatial.org] or Carl Reed [creed@opengeospatial.org] know and they will update the Delicious catalogue.

[\(Back to top\)](#)

Employment Opportunities

[Job Opportunity at the University of Concepcion, Chile](#)

Source: <http://snitchile.blogspot.com/>



The Department of Geography, of the Faculty of Architecture, Urban Planning and Geography, University of Concepción, Chile, calls for a contest for the position of Full Time Teacher.

Requirements:

- Geographer or specialist in the geographic area
- Doctoral Academic Degree or in progress
- Specialization in Human and Economic Geography
- Teaching experience in Higher Education of at least two years
- Publications in Scientific Journals
- Participation in Research Projects
- Active participation in the discipline conferences
- Geographic Information Systems Management

Please send Blind Curriculum Vitae, publications, research areas, teaching activities, and copy of academic degree, indicating Application Code (Code GEO-01) to: *Universidad de Concepción, Dirección de Personal, Casilla 160 –, Correo 3, Concepción, Chile*. More background to the application on the following link: http://www2.udec.cl/~faug/index.php?option=com_content&view=article&id=178&Itemid=1

[NASA Postdoctoral Program](#)

Source: <http://eospso.gsfc.nasa.gov/>

The NASA Postdoctoral Program offers research fellowships to highly talented national and international scientists and engineers to engage in ongoing NASA research programs at a NASA Center, NASA Headquarters, or at a NASA-affiliated research institution. These highly competitive fellowships are awarded for one year and are renewable for up to a total of three years, depending on NASA's needs and availability of funds. Deadlines for applying are **March 1, July 1, and**



Global Spatial Data Infrastructure

Latin America and the Caribbean Newsletter

November 1 each year. Approximately 50 fellowships are awarded annually in the fields of space science, earth science, aeronautics, space operations, exploration systems, and astrobiology. Applications must be submitted online at <http://nasa.orau.org/postdoc>

[\(Back to top\)](#)

Other

[XXXII Central America Climate Forum Concludes \(III FCAC 2010\)](#)

Source: <http://www.cathalac.org/>

The XXXII Central America Climate Forum (2010 III FCAC, in Spanish) was held in San Salvador, El Salvador, on November 23-24, 2010 with financial support of the European Union through the Environmental Degradation and Vulnerability Reduction Program (PREVDA). The Climate Forum of Central America (FCAC, in Spanish) is a working group led by the Regional Hydraulic Resources Committee / Central American Integration System (CRRH/SICA, in Spanish) since 2000, where meteorology, climate and hydrology experts from Meteorological Services, Universities and Private Businesses of the Central American Region participate and quarterly generate climate information forecasts for the region. For the last two years, the CATHALAC-SIMEPAR Consortium has supported the Forums' organization and logistics for the resulting Central American "Climate Perspective" in the context of the PREVDA/UGR/SER/14/08 Project "Integrated Geography and Hydrometeorology Platform Implementation of the Central American Region and its Practical Applications" that the Consortium executes within the PREVDA, while also providing post Forum technical training. The Central American "Climate Perspective" is an estimate about the possible rainfall and temperature behavior developed with statistical tools, similar years comparison; and global and regional models results' analyses regarding ocean surface temperatures and rainfall, with the objective of complementing forecasting activities that the National Meteorology and Hydrology Services (SMNH, in Spanish) perform, at national level in each of the countries of the Central America Isthmus. On this occasion the event was presided by the Directorate General of the Land Studies National Service (SNET, in Spanish) of the Natural Resources and Environment Ministry of El Salvador, with representatives of the SMHNs of Belize, Costa Rica, El Salvador, Guatemala, Honduras, Nicaragua and Panama, as well as SICA-CRRH and of the Consortium, participated. One of the objectives of this Forum is to revise current Ocean and Atmospheric conditions and their application in the quarterly rainfall patterns in the Mesoamerican Region, as well as continuing strengthening capacities to provide regular, updated and verified climate forecasting in Central America and its applications in agriculture, fisheries, water resources management, risk management and food security.



[\(Back to top\)](#)

Americas: Conferences, SDI Events

[CPCI Calls for its Fourth Annual Meeting](#)



Source: <http://www.igac.gov.co>
The chairmanship of the Permanent Committee on Cadastre in Latin America (in Spanish CPCI), is pleased to invite to the Fourth Annual Meeting to be held at the premises of the Geographic

Institute "Agustin Codazzi" (in Spanish IGAC), in Bogota, Colombia, on April 12-15, 2011. Within the meeting's program will be held the Second General Assembly in order to elect the new President and Steering Committee. A balance of the current Presidency management highlighting achievements and future project development activities for CPCI will also be presented. The central theme of the meeting is "The Technological Modernization of Cadastre."

Global Spatial Data Infrastructure

Latin America and the Caribbean Newsletter

Second National Congress on Watersheds

Source: Jose Manuel Espinoza by way of Santiago Borrero

The 2nd National Congress on Watershed Management will be held in Villahermosa, Tabasco, Mexico on May18-20 2011. The event seeks, among other, to deepen on the functioning of the basin as a system in terms of its components and dynamics, considering both terrestrial and aquatic ecosystems; and to identify mechanisms that may enable and promote cooperation and coordination processes between actors for the implementation of watershed management. Deadline for submission of entries is **March 31**, 2011 and should be forwarded by email to rufuspinedal@gmail.com or cuencas@ine.gob.mx. The event is organized by the Universidad Juarez Autonoma de Tabasco (Academic Division of Biological Sciences), Universidad Autónoma de Querétaro (Master Program on Integrated Watershed Management), and the National Ecology Institute of the Ministry of Environment and Natural Resources. Detailed information may be found in the [First Congress Call](#).

VIII Patagonian Working Days on Geography

Source: <http://www.sitsantacruz.com.ar/>

The event will take place on April 13-16, 2011 in Comodoro Rivadavia, Chubut, Argentina. These are national working days, with emphasis on Patagonian territorial issues. Objectives include: Promoting theoretical and methodological debate; Strengthening academic and institutional exchange; Fostering the construction and/or strengthening of networks for

research dissemination, teaching and geographic extension; and contributing to the consolidation and strengthening of regional studies in Patagonia. Information and questions: comfhcs@unpata.edu.ar or ext-fhcs@unpata.edu.ar

First National Congress on Geographic Information Technologies

Source: <http://www.sitsantacruz.com.ar/>



The Laboratory of Geographic Information Technologies, both of the Faculty of Humanities at the Universidad Nacional del Nordeste (UNNE) and the Geohistorical Research Institute (CONICET), invites participation to the First National Congress of Geographic Information Technology (GIT) and IV Meeting of Geographic Information Technology Users of the NEA, to be held on April 14-15, 2011. The objectives of the event include: Presentation of works using Geographic Information Technologies (GIT) that contribute to analysis on the geographic space; Reaching agreements on criteria aimed at generating common standards for spatial information production using GIT; Promoting the need to share and disseminate geoinformation to assist decision making on territorial issues; and to create a permanent discussion forum for finding solutions to common problems faced by agencies and institutions when applying GITs. More information at: <http://hum.unne.edu.ar> Contact: labtig@hum.unne.edu.ar

[\(Back to top\)](#)

YEAR 2011

[Year 2011](#) [January](#) [February](#) [March](#) [April](#) [May](#) [June](#) [July](#) [August](#) [September](#) [October](#) [November](#) [December](#)
[Year 2012](#) [January](#) [February](#) [March](#) [April](#) [May](#) [June](#) [July](#) [August](#) [September](#) [October](#) [November](#) [December](#)

FEBRUARY 2011

1-3 *NEW*	San Diego CA, USA	DistribuTECH 2011 Conference & Exhibition
2-4	Washington DC, USA	ESRI Federal User Conference (FedUC)
3-4 *NEW*	Phoenix AZ, USA	MAPublisher Training
7-9	New Orleans LA, USA	International LiDAR Mapping Forum
7-11	La Havana, Cuba	VII International Congress GEOMATICS 2011
8-10	Redlands CA, USA	Redlands GIS Week
10 *NEW*	New Orleans LA, USA	StreetMapper User Conference USA 2011
23-24	Redlands CA, USA	2011 ESRI California/Hawaii/Nevada Regional User Group Conference
23-28	Gosier Guadeloupe,	GEOProcessing 2011: The Third International Conference on Advanced Geographic Information Systems, Applications, and Services

Global Spatial Data Infrastructure

Latin America and the Caribbean Newsletter

Feb. 28 – Mar. 2 *NEW*	Sao Paulo, Brazil	13th Capacity Building Committee Meeting
Feb. 28 – Mar. 3 *NEW*	Sao Paulo, Brazil	15th Architecture and Data Committee Meeting

MARCH 2011

1-2	Muncie, IN USA	2011 Indiana GIS Conference
2-3 *NEW*	Washington DC, USA	Mitigating Disaster Through Design & Construction: Planning and Building for Resiliency
6-8	Palm Springs CA, USA	2011 ESRI Worldwide Business Partner Conference (BPC)
7-10	Palm Springs CA, USA	2011 ESRI Developer Summit
11-16 *NEW*	Tempe AZ, USA	Resilience 2011: Resilience, Innovation and Sustainability - Navigating the Complexities of Global Change
14-17 *NEW*	Nuevo Vallarta, Nayarit Mexico	Regional Platform for Disaster Reduction in the Americas
21-24	Myrtle Beach SC, USA	Coastal GeoTools 2011
21-24	The Woodlands (Houston) TX, USA	SPAR 2011: 3D Imaging & Positioning for Engineering, Construction, Manufacturing
28-30	Hershey PA, USA	24th Annual GIS-T Symposium
28-31	Fresno CA, USA	17th Annual California GIS Conference - Meeting California's Challenges
30-31	Chicago IL, USA	Enterprise Strategies for Location Intelligence USA
Mar.31-Apr.1	New York, NY USA	MAPublisher training

APRIL 2011

12-15 *NEW*	Bogotá, Colombia	4th Annual Meeting of the Permanent Committee on Cadastre in Ibero- America (in Spanish CPCI)
12-16 *NEW*	Seattle WA, USA	Conference: The Association of American Geographers 2011 Annual Meeting
12-16 *NEW*	Seattle WA, USA	Space-Time Integration in Geography and GIScience
11-14 *NEW*	Montreal, Canada	Expert Meeting on the Modalities of Operation of the ABS Clearing House
11-23 *NEW*	Havana, Cuba	Public health Course on Emergencies and Disasters situations
13-16 *NEW*	Comodoro Rivadavia, Chubut, Argentina	VIII Patagonian Working Days on Geography
14-15	Resistencia, Chaco, Argentina	First National Congress of Geographic Information Technologies and Fourth Meeting of Members of Geographic Information Technologies of the NEA Contact: labtig@hum.unne.edu.ar
18-21	Houston TX, USA	2011 ESRI Petroleum User Group Conference
19-21 *NEW*	Santa Clara CA, USA	Conferencia Where 2.0
22-27	Montreal, Canada	IPY 2012 Conference 'From Knowledge to Action'
26-29 *NEW*	Chandler AZ, USA	Field Service 2011
Apr.30 - May 5	Curitiba PR, Brazil	XV Brazilian Symposium on Remote Sensing (SBSR)

MAY 2011

1-5	Milwaukee WI, USA	ASPRS 2011 Annual Conference "Ride on The Geospatial Revolution"
2-4	Jacksonville FL, USA	2011 ESRI Southeast Regional User Group
10-13	Lakewood CO, USA	The National Map Users Conference and the Geospatial Information Science Workshop
10-14 *NEW*	Dallas TX, USA	GITA's 2011 Geospatial Solutions Conference
11-13 *NEW*	Santiago de Cuba, Cuba	4th International Conference on Integrated Management of Coastal Zones
11-14	Paraty, Brazil	I Brazilian Symposium of Historical Cartography
14-18	Victoria BC, Canada	International Marine Conservation Congress
16-20	St Louis MO, USA	URISA Leadership Academy
19	Botucatu SP, Brazil	II Symposium on Geostatistics Applied to Agrarian Sciences

Global Spatial Data Infrastructure

Latin America and the Caribbean Newsletter

19-20 *NEW*	Chicago IL, USA	MAPublisher Training
19-24	Washington DC, USA	Second International Marine Conservation Congress - Making Marine Science Matter
23-25	Washington DC, USA	COM.Geo 2011: 2nd International Conference and Exhibition on Computing for Geospatial Research and Application
24-25	Grantville PA, USA	19th Annual Pennsylvania GIS Conference
25-27	Toluca, Mexico	XIII Latin American Conference on Geographic Information Systems (CONFIBSIG) E-mail: confibsigXIII@uaemex.mx

JUNE 2011

14-16	Sao Paulo SP, Brazil	MundoGEO#Connect
15-17	City of Panama, Panama	Second Meeting of the PAIGH Joint Technical Committees
21-24	University of Nottingham , USA	Third Open Source GIS Conference - OSGIS 2011
27-30	Atlanta GA, USA	2011 URISA GIS in Public Health Conference Contact: IMCCprogram@gmail.com

JULY 2011

4-8	La Havana, Cuba	VIII International Convention on Environment and Development
7-12	San Diego CA, USA	The Survey Summit Arranged by ESRI and the American Congress on Surveying and Mapping (ACSM)
9-12	San Diego CA, USA	2011 ESRI Homeland Security GIS Summit
9-12	San Diego CA, USA	2011 ESRI International User Conference
10-11	San Diego CA, USA	ESRI Business GIS Summit
14-15	San Diego CA, USA	MAPublisher Training
16-19 *NEW*	Big Bear Lake CA, USA	14th Annual Conference Society for Conservation GIS (SCGIS)

SEPTEMBER 2011

15-16 *NEW*	Washington DC, USA	MAPublisher Training
17-27	Chantilly VA, USA	2011 GXP User Conference Discover. Learn. Advance

NOVEMBER 2011

1-4 *NEW*	Indianapolis IN, USA	GIS-Pro 2011: URISA's 49th Annual Conference for GIS Professionals
1-4 *NEW*	Chicago IL, USA	ACM SIGSPATIAL GIS 2011
7-12	Pará - Belém (PA), Brazil	V International Symposium on Agricultural Geography and VI National Symposium on Agricultural Geography
14-18	Santiago, Chile	UGI 2011 Regional Geographic Conference

YEAR 2012

[Year 2012](#) January February March April [May](#) June [July](#) August September October November December

MAY 2012

14-17	Quebec City, Canada	GSDI-13
TO BE DETERMINATED	Rio de Janeiro, Brazil	UN Conference on Sustainable Development (commonly called Earth Summit 2012) or 'Rio+20'

JULY 2012

7-12	San Diego CA, USA	The Survey Summit
------	-------------------	-----------------------------------

[\(Back to top\)](#)



Global Spatial Data Infrastructure

Latin America and the Caribbean Newsletter

Please mention SDI-LAC as source of information in any correspondence you may have on items on this issue

To subscribe to SDI-LAC, please do so online at:

<http://www.gsdi.org/newslist/gsdisubscribe.asp>

Nancy Aguirre, PAIGH, Editor cnaguirre@ipgh.org

Global Spatial Data Infrastructure Association,

<http://www.gsdi.org>

DISCLAIMER:

GSDI, PAIGH and the Editor will not be held liable for any errors, mistakes, misprints or incorrect information. Copyright © 2011. All rights reserved.