

Global Spatial Data Infrastructure Latin America and the Caribbean Newsletter

SDI-LAC

February 2009

Vol. 6, No. 2

Spatial Data Infrastructure-Latin America and the Caribbean (SDI-LAC) is a regional, monthly, and free, electronic newsletter from the [Global Spatial Data Infrastructure Association](#) (GSDI). It focuses on aspects related with Spatial Data Infrastructure, and on GIS, remote sensing, and data management issues, related with SDI in Latin America and the Caribbean. It aims to raise awareness, provide useful information to strengthen national SDI initiatives, and support synchronization of regional efforts.



[GSDI Definition](#)

The [Pan-American Institute of Geography and History](#) (PAIGH), member organization of GSDI, and the [Permanent Committee on Geospatial Data Infrastructure for the Americas](#) (PC-IDEA), promote SDI development in the region. The newsletter is prepared by PAIGH for GSDI.

[Message from the Editor](#)

[Input to this Issue](#)

[SDI News, Links, Papers, Presentations](#)

[Article of the Month](#)

[Geospatial Research and Applications](#)

[GIS Tools, Software, Data](#)

[Training Opportunities](#)

[Funding Opportunities, Awards, Support](#)

[Employment Opportunities](#)

[Other](#)

[Americas: Conferences, SDI Events](#)



Message from the Editor

Now, SDI-LAC Newsletter is available in Portuguese! Portuguese Translation of SDI-LAC is possible thanks to Eduardo Freitas-Oliveira, a cartographic engineer, MSc in GIS, editor of MundoGEO Web Portal and InfoGEO Magazine; and Silvana Camboim, a cartographic engineer, MSc in GIS, from GeoPlus Tecnologia e Informatica.

Due to an increasing volume of information on events, the respective section will be restricted to those events taking place in the Americas. However, for "The Rest of the World: Conferences, SDI Events", please find a link to upcoming events of global or major international interest in GSDI webpage at: <http://www.gsdi.org/newsletters.asp>

We kindly inform that SDI-LAC Newsletter is taking correspondent members in each country of the LAC region. Next issues will include their contributions. If you would like to become a correspondent for your country please contact Nancy Aguirre cnaguirre@ipgh.org. In principle the only requirement is that you are an active member in the Spatial Data Infrastructure activities of your country.

If you have news or information related to GIS, remote sensing, and spatial data infrastructure that you would like to highlight (e.g., projects, conferences, workshop announcements, publications, reports, websites of interest, etc.), kindly send them in. We would be happy to include them in the newsletter. We also encourage you to send to the editor your comments and suggestions for the continuous improvement of SDI-LAC Newsletter. **PLEASE share this newsletter with colleagues who may find the information useful, and ideally they will subscribe themselves.**

Back issues of the newsletter are at the GSDI website: <http://www.gsdi.org/newsletters.asp>

Editor, Nancy Aguirre, Pan-American Institute of Geography and History (PAIGH), <http://www.ipgh.org>, cnaguirre@ipgh.org

SDI-LAC Newsletter



Vol. 6, No.2

Global Spatial Data Infrastructure Latin America and the Caribbean Newsletter

Input to this Issue

Thank you for their contributions to this issue of the SDI-LAC newsletter to:

| | |
|-----------------------|---|
| Santiago Borrero | Secretary General, Pan-American Institute of Geography and History, PAIGH, Mexico |
| Rita I. Besana | Content Manager, IABIN, Organization of American States, Panama City, Panama |
| Klaus-Detlef Schubert | Geoka - Gesellschaft für Geomorphologische Kartierungen, Trier, Germany |
| Kate Lance | National Space Science and Technology Center (NSSTC), Huntsville, AL, USA |
| Joanne Ojeda | Marketing Manager, PetroGIS IIR Middle East, United Arab Emirates |
| Bruce Potter | President and CEO of Island Resources Foundation, Washington, USA |
| Boris Ramirez | Thematic Networks Coordinator, IABIN Secretariat, Panama City, Republic of Panama |
| Dawn Wright | Professor, Department of Geosciences, Oregon State University, USA |

[\(Back to Top\)](#)

SDI News, Links, Papers, Presentations

[PAIGH establishes the "Pan-American Laboratory for the Observation of Natural Disasters" and supports the Creation of the Ibero-American Network of Geographic Information Infrastructures](#)

Source: <http://www.ipgh.org/>

INSTITUTO PANAMERICANO DE GEOGRAFÍA E HISTORIA



41 REUNIÓN DEL CONSEJO DIRECTIVO San Salvador, El Salvador 19-21 de noviembre de 2008

The Pan-American Institute of Geography and History (PAIGH) resolves creating the "Pan-American Laboratory for the Observation of Natural Disasters", and to support the Creation of the Ibero-American Network of Geographic Information Infrastructures, during the 41st Meeting of its Directive Council. [Resolution 1](#), supporting the creation of the Ibero-American Network of Geographic Information Infrastructures resolves:

1. To express its acquiescence of the initiative of the IGN of Spain, permanent representative of Spain before the PAIGH, to create, within the framework of the Ibero-American Conference and with the concurrence of other regional initiatives, the Ibero-American Network of Geographic Information Infrastructures.
2. To express its desire and wish that the Network will contribute to consolidate and optimize the work of the PAIGH in the Americas and the development of the national agencies which comprise it.
3. To propose to future members of the Network and its Authorities that Member States of the PAIGH that do not belong to the Ibero-American region be invited to participate in the Network as observers.
4. Insofar as it is within institutional and logistic possibilities, to support the initiative so the creation, operation and development of the Ibero-American Network of Geographic Information Infrastructures reaches its objectives.

In turn, [Resolution 5](#) resolves:

Global Spatial Data Infrastructure Latin America and the Caribbean Newsletter

1. To provide for the creation of the Pan American Laboratory for the Observation of Natural Disasters at PAIGH's headquarters and support its operation with the resources made available by the General Secretariat with Mexico's National Meteorological Service and other international agencies and organizations.
2. In the scientific work plans for the Laboratory, to initially give precedence to the issues that arise from the development and recommendations of the "2010 - 2020 Pan American Agenda".

[13th Inter-institutional Meeting for the National Statistical System: Modernization of Technological Platform of the ONE, Dominican Republic](#)

Source: <http://www.one.gob.do/>

The National Statistics Office (in Spanish ONE) held the thirteenth Inter-institutional Meeting of the National Statistical Information System (in Spanish SEN) on Thursday December 11, 2008 in Santo Domingo, Dominican Republic with central theme on Modernization of Technological Platform of the ONE. The meeting focused on the following topics:

- To provide accurate and updated statistics, and improve services to citizens, businesses and the government.
- The central repository includes a set of variables and indicators, mainly provided by the Secretary of State for Economy, Planning, and Development (in Spanish SEEPyD) and ONE that will support decision-making of government and social researchers, economists, universities and citizens in general.
- The project is sustained by the "Support for Reforming and Modernizing the Executive Branch Program (Pro-Reforma).



[GIS Consultancy Team in Turks & Caicos Islands, November 2008](#)

Source: <http://www.caymanlandinfo.ky/>



A delegation from the Lands & Survey Department's Cayman Land Info team have arrived in the Turks & Caicos Islands to begin on-site work relating to the contract for the conversion of the Turks & Caicos Islands Land Registry into a fully featured electronic national resource for the 21st century. Whilst in the islands, the team (comprised of Senior GIS Programmer/Analyst Ryan Pream, GIS Programmer/Analyst Carleen Ghio, and GIS Mapping/Database Specialist Anna Verrill) will undertake Oracle database setup and configuration, GIS software installations and corresponding GIS training in the editing of, and processes related to, cadastral data. A key part of the project is also to leverage the investment in the modernization of the islands GIS and Land Registry infrastructure by providing a bespoke website enabling national and wider access to the Land Registry and Mapping data. During and after this Phase 1 component, there are many other elements comprising the project as a whole - particularly the emphasis placed upon training and effecting a comprehensive skills transfer from senior Land Registry officers and GIS professionals in Cayman to their associates in Turks & Caicos. Delegation leader Mr. Alan Jones (Director of the Cayman Islands Lands & Survey Department) says "This first step follows many months of hard work back in Cayman by the GIS team, preparing the groundwork for the on-site work to begin. Central to this preparation effort has been the design and creation of the Land Registry database schema and the integration of this with the GIS mapping and website interface". Many more visits are scheduled over the coming months as the various components of the project become ready to deploy.

Global Spatial Data Infrastructure Latin America and the Caribbean Newsletter

[Workshop: "Towards the development of the Spatial Data Infrastructure of Panama - IPDE"](#)

Source: <http://www.ignpanama.gob.pa/>

On March 5-6 2009 (Date Postponed) in Panama City, Panama, the Ministry of Public Works through the National Geographic Institute "Tommy Guardia" and the Ministry of Economy and Finance, through the Municipal Development Program will advance the workshop: "Towards Development of the Spatial Data Infrastructure of Panama (in Spanish IPDE)" by organizations producing spatial data.



[More Mayors Authorized to offer Cadastral Services](#)

Source: <http://www.ineter.gob.ni/>



The Nicaraguan Institute of Territorial Studies, through the National Land Commission, in order to recognize and contribute to the strengthening of Municipal Cadastre developed by the Mayor nationally, continues to deliver Technical Endorsement to different municipalities in the country. This time, the benefited are Acoyapa and Santo Tomas, both municipalities within the Chontales Department, who received from the Executive Director of the Institute for Territorial Studies of Nicaragua (in Spanish INETER), Dr. Alejandro Rodriguez, a technical endorsement of approval for issuing Cadastral Data and Municipal Cadastral Certificates. In this way, these two mayors are authorized to offer all Cadastral Municipal Services, within their district, after

having reached level 3 of the Municipal Cadastral System, according to the terms of the Municipal Regulations on Cadastral Data and Municipal Cadastral Certificates for areas lacking Cadastre.

[National Geographic and Statistical Information System, Mexico](#)

Source: <http://www.inegi.gob.mx/snieg/>



On April 16, 2008 it was published in the Official Gazette the decree that issued the Law on National Geographic and Statistical Information (in Spanish LSNIEG). LSNIEG states that SNIEG will aim to provide the society and the state with national quality, relevant, accurate and timely information in order to contribute to national development. It also states that the responsible for regulating and coordinating the system will be the National Institute of Statistics, Geography and Informatics (in Spanish INEGI), and that information of national interest, will be official and compulsory for the Federation, States, the Federal District and Municipalities. Now are published the following documents regulating its operation: [Rules for the integration and operation of the National Consultative Council](#), [Rules for the integration and operation of the Executive Committees of the National Information Subsystems](#), [Manual for the presentation of statistical data in tables and graphs](#). Specialized technical committees of SNIEG called Secretary of Energy (in Spanish SENER), Ministry of Health (in Spanish SALUD) and Department of Tourism (in Spanish SECTUR) now have respective websites that can be accessed via SNIEG's homepage at: <http://www.inegi.gob.mx/snieg/>

[Research Program on Satellite Earth Observation Development and Application, Colombia](#)

Fuente: <http://www.cce.gov.co/>



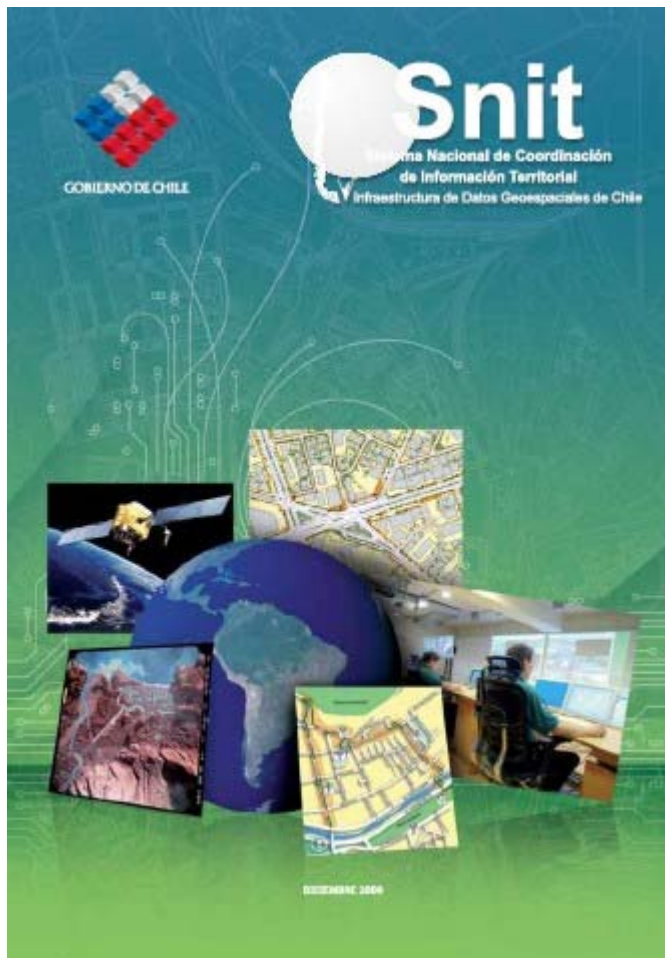
The National Development Plan 2006-2010 establishes as high-priority area for the country's economic and social progress the development of spatial technologies. In addition, the document "2019 Colombia Vision II Centenary" makes emphasis in the necessity to advance knowledge and use of spatial technologies in Colombia. The Project

Global Spatial Data Infrastructure Latin America and the Caribbean Newsletter

seeks to develop technologies and applications of Earth Observation research at national level that contribute to improving knowledge of its territory, public policies and sustainable resource management. Please [click here](#) to access the complete document.

[Chilean Magazine SNIT 2008 is published](#)

Source: <http://www.snit.cl/>



Inside this issue you will find interesting articles by specialists, such as the evaluation and control of Spatial Data Infrastructure (SDI); the case of the European project written by the European Umbrella Organization for Geographic Information (EUROGI); Basic Land Information: an urgent need for the country's development by the Military Geographic Institute of Chile (in Spanish IGM) -that shows how information has been produced as a territorial base for 146 urban centers and rural areas of importance to the country-; the CITSU project of the Hydrographic and Oceanographic Service of the Chilean Navy (SHOA) set up to mitigate impacts by tsunami in Chile, and the presentation of the new Satellite Earth Station of the Aerophotogrammetric Service of the Chilean Air Force (SAF), which captures spatial information from optical satellites, creating digital images of any area of the country. You will also find an article on the Geoportal implemented by the National System of Coordination of Territorial Information (in Spanish SNIT) Chile, a novel tool for publication of spatial data; and another on the implementation of a strategic control center which has enabled to integrate spatial information with the work of the National Program of Transportation. The National Tourism Service (SERNATUR), published his experience on incorporation GIS in tourism planning and management, by way of geo-referencing more than 4 thousand tourist attractions in addition to priority areas identified. On its behalf, the Organization "Live City" shares its experience on participatory mapping with citizen input on the preparation of natural resources, social and cultural rights mapping in 34 communes of the metropolitan area of

Santiago. At the end of the magazine, there are published two contributions emphasizing the importance of spatial information. The first is from the Chilean Chamber of Construction, which raises the need to measure and simulate development impacts in the territory to minimize investment risks on future projects. The second, of the Institute of Geography of the Catholic University of Chile, raises the importance of integrating spatial databases and technologies for proper decision-making in public and private levels. We invite you to read the magazine at to the following link: <http://www.snit.cl/common/asp/pagAtachadorVisualizador.asp?argCryptedData=GP1TkTXdhRJAS2Wp3v88hAht0EpT2a3s&argModo=inline&argOrigen=BD&argFlagYaGrabados=&argArchivold=5962>

Global Spatial Data Infrastructure Latin America and the Caribbean Newsletter

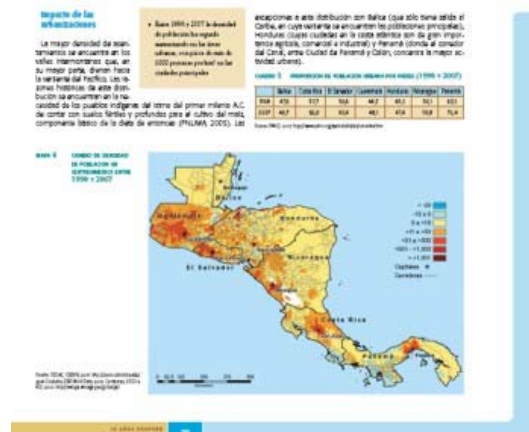
Overview of trends in disaster risk management in Central America

Source: <http://www.cathalac.org/>

Ten years after the occurrence of the impact of Hurricane Mitch in Central America, after a decade marked by the presence of a variety of disaster types in the region, there is the initiative of conducting analysis and reflection on the progress, trends and outcomes of strategies and actions taken by governments, agencies and international cooperation organizations in the broad and complex field of risk management. The Water Center for the Humid Tropics of Latin America and the Caribbean (CATHALAC), under the joint collaboration between various regional agencies with jurisdiction on disaster related issues, share their knowledge and experience in the recently published "*Ten years after Hurricane Mitch: Overview of trends in disaster risk management in Central America*", as a way to contribute to improving the quality and efficiency of policies and strategies undertaken by the whole involved community. The document (Section 2.6 deals with Information Systems) may be downloaded at:

http://www.cathalac.org/presentaciones/cathalac_2008_panorama_gestion_riesgo.pdf

For more information please contact: cathalac@cathalac.org



Resolutions from the ISO/TC 211 - 27th Plenary, held in Tsukuba, Japan

Source: Kate Lance

ISO/TC 211 resolution 446 was passed for the formation of an ad hoc working group on SDI. The wording of resolution 446 included:

- ISO/TC 211 recognizes the importance of standards for SDI and resolves to establish an ad hoc group to prepare a workshop.
- ISO/TC 211 welcomes and accepts the chairperson nomination from Saudi Arabia
- ISO/TC 211 welcomes the offer from other countries and members to participate.

The next ISO plenary – the 28th ISO/TC 211 Plenary – will be held on 25-29 May 2009 in Molde, Norway. More information at: <http://www.isotc211.org/calendar.htm>

Climate Change Integration Plugfest to be launched at FOSS4G

Source: OGC Press Release



The Open Geospatial Consortium (OGC), Australian Bureau of Meteorology (BOM) and the Open Source Geospatial Foundation (OSGeo) have announced a Climate Change Integration Plugfest (CCIP) to be launched at the FOSS4G conference, 20-23 October 2009, <http://2009.foss4g.org>. The CCIP will demonstrate standards based interoperability between geospatial applications based on a Climate Change scenario. Raj Singh, Director of Interoperability Programs at OGC, explained that, "The CCIP is a server with multiple virtual machines providing a number of different geospatial

Global Spatial Data Infrastructure Latin America and the Caribbean Newsletter

Web services that implement the OGC's open interface and encoding standards. It will be used in the coming months to demonstrate open Web-based geo processing at conferences, test beds, classes and other events around the world." Graham de Hoedt, Manager of Climate Information Services at the Australian Bureau of Meteorology said, "Integration of data and applications is crucial for solving complex problems like the provision/sharing of decadal and multi-decadal climate change related data and information". Cameron Shorter, Chair of the FOSS4G organizing committee and Systems Architect at LISAsoft said "Geospatial users regularly ask how to integrate Open Source, COTS and proprietary software. At FOSS4G, attendees will see the major geospatial applications working together and talk with implementers about what really works". Companies or individuals interested in sponsoring or participating in the Climate Change Integration Plugfest should contact Greg Buehler gbuehler@opengeospatial.org. The theme for 2009 is "User Driven", highlighting the power of Open Source to integrate with existing systems. More information at: <http://2009.foss4g.org>

12th Ibero-American Conference on Geographic Information Systems

Source: ESRI GIS-List by Kate Lance



The School of Geographic Sciences (in Spanish ECG) through its Program on Geographic Information Systems and Remote Sensing (PROSIGTE) is pioneer -in the Central American region- on the application of Geographic Information Systems (GIS). It is pleased to invite you to the 12th Ibero-American Conference on Geographic Information Systems that will be held on 17, 18 and 19 of June in Heredia, Costa Rica. The Ibero-American Conference provides an opportunity of bringing together diverse groups of professionals involved in the development and implementation of projects and new technologies on GIS applications. You may share experiences and exchange ideas about current GIS developments and future trends of many application fields. Therefore, this Conference is of interest to academic institutions, the State, NGOs, and private organizations. You will find the complete information at the following website <http://www.fundauna.org/csig/>. Deadline for paper submission is Friday **March 27**, 2009. For more information please contact: National University of Costa Rica, School of Earth and Marine Sciences, School of Geographic Sciences, Program on Geographic Information Systems and Remote Sensing. Telephone: (506) 2277-3283 / (506) 2277-3288 / (506) 2261-0028 (Fax), e-mail: sibsig@una.ac.cr

[Extension of Deadline for Submissions to ICC in Santiago, Chile](http://www.icc2009.cl/)

Source: <http://www.icc2009.cl/>



Global Spatial Data Infrastructure Latin America and the Caribbean Newsletter

Having considered the numerous requests for putting back the deadline for the submission of abstracts in all categories (both refereed and non-refereed papers, also posters) and of full papers in the refereed category, LOC for ICC 2009 has decided to move the deadline to Saturday **28th of February**, 2009. This change to the deadline is only for submissions; the other dates and deadlines established remain unchanged.

4th gvSIG Working Days' Papers, Posters and Articles

Source: Office of Communication, gvSIG Project

Presentations, posters and papers presented at the 4th gvSIG Working Days [1] are now available. These Days, under the slogan "Together Forward" were attended by 657 persons, from more than 15 countries. This year were held two complementary events, the Open Geospatial Consortium (OGC) Technical Committee Meeting, and an Eclipse Day during the first week of December, with more than 1,000 attendees gathered around gvSIG Days. During this 4th Working Days it was released: gvSIG version 1.9 [2], the 3D extension [3], and an extension for LIDAR data management [4]. In the near future, videos on presentations and workshops will be uploaded. More information at:

[1] <http://www.jornadagvsig.gva.es/cas/ponencias/>

[2] <http://www.gvsig.gva.es/index.php?id=2115&L=0&K=1&A=>

[3] <http://www.gvsig.gva.es/index.php?id=2075&L=0&K=1&A=%2F>

[4] <http://www.gvsig.gva.es/index.php?id=2097&L=0&K=1>

PetroGIS: Advanced Applications for GIS in Oil and Gas

Source: Joanne Ojeda



PetroGIS will take place on March 28 - April 1 2009 at Crowne Plaza Hotel, in Manama, Bahrain. Taking place over five days this event brings together over 250 senior decision makers within the field of GIS in Oil & Gas. This cutting-edge conference will provide a plethora of practical, best practice case studies from around the world, interactive technical workshops and work streams, as well as peer-to-peer networking to ensure delegates get the opportunity to learn and share best practice with industry leaders. The conference will bring together the best minds in the industry and allow companies to showcase their innovative projects and future plans as the region's industry gather at the only comprehensive event designed to help them solve their top challenges:

- GIS Business Case Development
- E&P Enterprise Solutions
- Overcoming Interoperability Challenges and Existing Legacy Systems
- Effective Data Analysis Strategies
- Bridging the Gap between GIS Data and Non-GIS Data
- The Value of Enterprise-Wide Data Integration
- GIS Applications in Oil Spill Management
- Quantifying ROI in GIS
- Distinguishing Between GIS Education and GIS in Education

For more information please log on to the event's webpage at <http://www.iirme.com/petroGIS/> or contact Joanne Ojeda joanne.ojeda@iirme.com

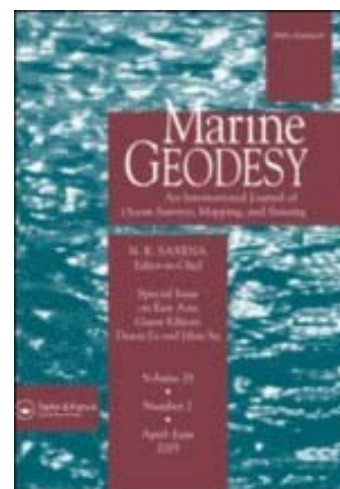
Global Spatial Data Infrastructure Latin America and the Caribbean Newsletter

New special issue on Marine and Coastal GIS

Source: Dawn Wright

Title: "Marine and Coastal GIS for Geomorphology, Habitat Mapping, and Marine Reserves", in: *Marine Geodesy*, Vol. 31, Issue 4. This includes SDI-related studies in both the Asia-Pacific and Caribbean regions, contains the following articles:

- [Introduction to the Special Issue: Marine and Coastal GIS for Geomorphology, Habitat Mapping, and Marine Reserves](#), Pages 223-230; Authors: Dawn J. Wright; William D. Heyman; DOI: 10.1080/01490410802466306
- [Geomorphometric Patterns of Nassau Grouper \(*Epinephelus striatus* \) Spawning Aggregation Sites in the Cayman Islands](#), Pages 231-245; Authors: Shinichi Kobara; William D. Heyman; DOI: 10.1080/01490410802466397
- [Determining the Influence of Seascap Structure on Coral Reef Fishes in Hawaii Using a Geospatial Approach](#), Pages 246-266; Authors: Lisa M. Wedding; Alan M. Friedlander; DOI: 10.1080/01490410802466504
- [Benthic Features as a Determinant for Fish Biomass in Gray's Reef National Marine Sanctuary](#), Pages 267-280; Authors: Laura Kracker; Matt Kendall; Greg McFall; DOI: 10.1080/01490410802466611
- [Automated Derivation of Bathymetric Information from Multi-Spectral Satellite Imagery Using a Non-Linear Inversion Model](#), Pages 281-298; Authors: Haibin Su; Hongxing Liu; William D. Heyman; DOI: 10.1080/01490410802466652
- [Derivation and Integration of Shallow-Water Bathymetry: Implications for Coastal Terrain Modeling and Subsequent Analyses](#), Pages 299-317; Authors: Kyle R. Hogrefe; Dawn J. Wright; Eric J. Hochberg; DOI: 10.1080/01490410802466710
- [An ArcGIS Seabed Characterization Toolbox Developed for Investigating Benthic Habitats](#), Pages 318-358; Author: Mercedes D. Erdey-Heydorn; DOI: 10.1080/01490410802466819
- [Multivariate Prediction of Rockfish Habitat Suitability in Cordell Bank National Marine Sanctuary and Del Monte Shalebeds, California, USA](#), Pages 359-371; Authors: Pat J. Iampietro; Mary A. Young; Rikk G. Kvitek; DOI: 10.1080/01490410802466900



Telematics and Informatics: An Interdisciplinary Journal on the Social Impacts of New Technologies, by ELSEVIER

Source: Air-I list

Call for Papers Special Issue on Digital Cities Aims and Scope: During the last years, extensive broadband network infrastructures are being constructed in more and more cities worldwide, offering high-speed connectivity to public organizations, businesses and citizens that allow the deployment of highly useful applications and electronic services. These e-services aim at both economic objectives (such as enhanced competitiveness and growth) and social objectives (such as higher quality of life, better services to various groups, social networking and inclusion, environmental protection). It is important to analyze systematically these Odigitalcities projects (usually including both network infrastructures and applications/e-services). Gaining knowledge from them is going to be useful for improving both design and implementation of future attempts, and also public policy making in this area. Submission deadline: **March 31**, 2009; Final manuscripts deadline: **July 30**, 2009. Authors are invited to prepare original manuscripts of 5,000 to 6,000 words (excluding references), adopting the guidelines defined in the website of OTelematics and Informatics (www.elsevier.com/wps/product/cws_home/703). Submitted papers should not have been previously published nor be currently under consideration for publication elsewhere. All submitted papers will be refereed through a peer review process. All papers should be submitted via the Journal's online submission and peer-review systems (<http://www.ees.elsevier.com/tele>). Please follow the instructions given on this site.

Global Spatial Data Infrastructure Latin America and the Caribbean Newsletter

2nd Call for Papers - International Journal of Geographical Information Science

Source: SEA-GIS Coastal and Marine GIS Distribution List

Special Issue on Information Semantics and its Implications for Geographical Analysis <http://www.cogsci.uni-osnabrueck.de/~isga08/SpecialIssue-IJGIS.pdf>. Ontology and information semantics are central to research on enhanced interoperability between geographic information systems, services, and datasets. It is increasingly understood that deeper insights into information semantics also have consequences for geographic analysis in general. We are looking for original work regarding the integration of geospatial semantics and geographical analysis with an emphasis on geo-processing and geospatial applications. Please submit your manuscript of not more than 6,000 words to isga08@ikw.uos.de by **March 31st**, 2009.

[\(Back to Top\)](#)

Article of the Month

National System of Coordination of Territorial Information: Progress 2008 - Challenge 2009

By Cristian Aqueveque Iglesias, SNIT Executive Secretary

SNIT Magazine, December 2008

Article Excerpt:

The construction of Spatial Data Infrastructure of Chile (SDI), has had two key milestones in recent years: the publication in September 2006 of the Supreme Decree No. 28, the Ministry of National Assets (MBN), which created the Coordination National System of Territorial Information (in Spanish SNIT) and, in June 2007, the formation of the Council of Ministers of the Territorial Information, a superior body of the institution which involves all the entities of the state administration which generate or use geospatial information service. In the year 2008, a set of activities were developed, some of the most relevant were the launch of the National Community of the Territorial Information, an event that took place on August 25, and whose goal is to set the guidelines of what it should be an alliance for the different sectors of the society so as to work in a complementary association and a powerful Geospatial Data Infrastructure in Chile. The activity was led by the Minister of National Assets, Romy Schmidt, in her capacity as chairwoman of the Council of Ministers of the Territorial Information, and it was attended by about 300 people, including representatives from the public, private and academic sectors, in addition to civic organizations. Another important fact, occurred on the same occasion, was the publication on the Internet of Mapswebsite of Chile (Geoportal.cl), a tool that allows the access in a decentralized way to the cartography of different state institutions, available on the Web so as to integrate them

through a display of maps. Notwithstanding the paragraph above, we must not forget that among the main objectives of the SNIT are the coordination of the action of the State in the management of land information service, ensuring public access to such information and giving the authorities tools for decision making and implementation of public policies. These goals are within the concepts of modernization, strengthening democracy, transparency and an active government closer to people. As indicated in the preceding paragraphs, it clearly describes the two areas of action to be approached the Executive Secretariat of the SNIT: a technician, designed to develop agreements and technological means to support the development of SDI, and other political goal, aimed at generating and maintain the institutions which would enable continuity and permanence to the work of national coordination, opening up spaces for discussion, agreement and work to normalize the land information. The complete paper may be found at:

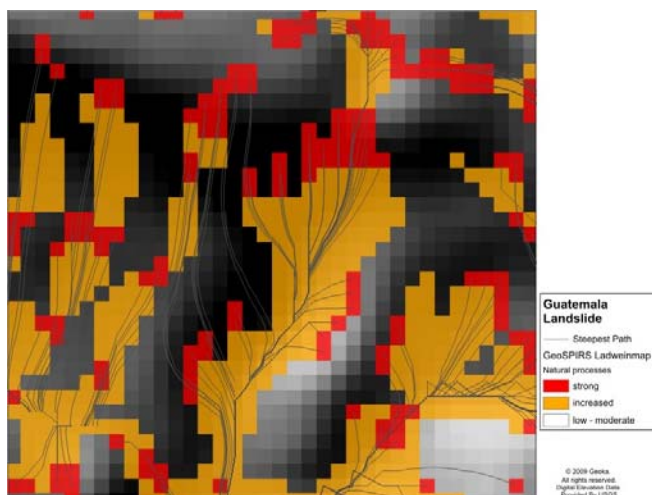
<http://www.snit.cl/common/asp/pagAtachadorVisualizador.asp?argCryptedData=GP1TkTXdhRJAS2Wp3v88hAht0EpT2a3s&argModo=inline&argOrigen=BD&argFlagYaGrabados=&argArchivold=5962>



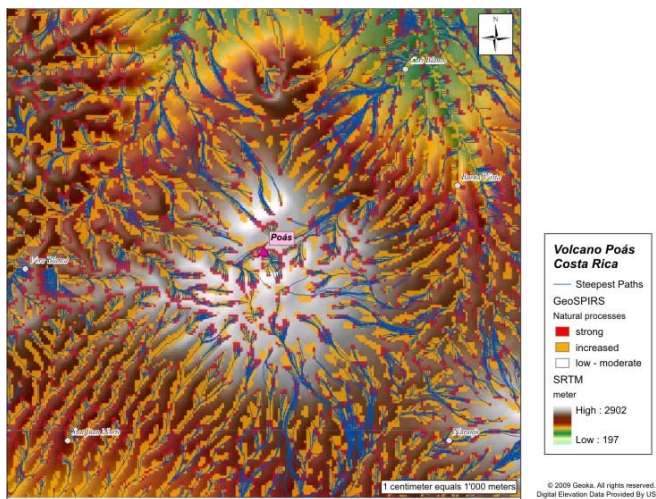
[\(Back to Top\)](#)

GeoSPIRS - A new way to view the Earth's surface

Source: Klaus-Detlef Schubert



High risk area for landslides in Guatemala;
danger could be seen for many years ago



Landslide areas around volcano Poás, Costa Rica (January 08)
400 sqkm area; clearly visible are big landslide/mudslide paths

The GeoSPIRS-Algorithm is a completely new view to the earth's surface by analyzing the digital elevation model (DEM: SRTM, LIDAR, terrestrial surveying) of the investigated area with a whole new approach. In practice it is an extension on top of a GIS system and uses raster algorithms. With GeoSPIRS it is possible to identify the whole natural processes of all terrains (also in the plain). In addition to it, it detects until now unknown natural processes and gives information about their causes. The procedure analysis the earth-surface and shares the surface in red (strong), orange (increased) and white (secured) areas. Movements and processes are taking place if the resistance against the effect of the gravitation is insufficient. GeoSPIRS detects the unresisting areas and identifies them before natural processes take place. These perceptions of the earth's surface are taken up in a special software and worded in different hazardous situations. Another feature of the program detects natural proceedings and visualizes them as part of our maps. In this way the maps show us the path of the natural process in the terrain exactly (blue paths on the map). GeoSPIRS analysis visualizes not only the past events. It is a precisely analysis for natural processes in the future. An example for opening in Google Earth regarding fatal avalanches that clearly shows the foreseeable avalanche paths, you will find here:

<http://bbs.keyhole.com/ubb/showflat.php/Cat/0/Number/1274081/an/0/page/1#1274081> (www.geoka.com)

[Community Health Assessment Using Self-organizing Maps and Geographic Information Systems](http://www.directionsmag.com/)

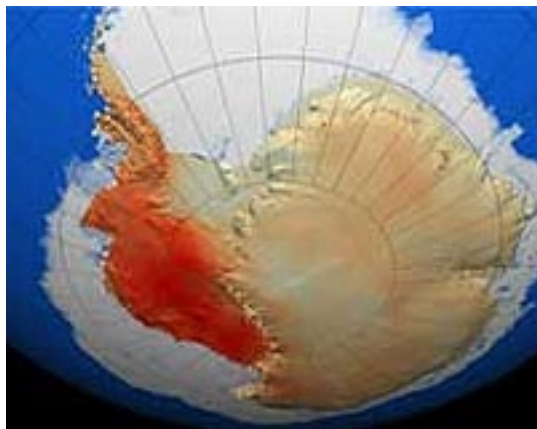
Source: <http://www.directionsmag.com/>

A healthier environment correlates with better health of the population. In such geographies chronic and infectious disease is less common. Does it make sense then, that communities with similar environments (based on environmental and socioeconomic factors) will show similar distributions of disease? Heather G. Basara and May Yuan of the University of Oklahoma classified 511 communities using 92 variables and concluded that the answer was essentially "yes." The results may prove useful in environmental health studies that often run into data and methodology challenges. The study combines use of a self-organizing map, SOM, an artificial neural network and GIS. [This article originally appeared in the *International Journal of Health Geographics* on Dec. 30, 2008]

Global Spatial Data Infrastructure Latin America and the Caribbean Newsletter

[50 Years of West Antarctic Warming](#)

Source: <http://www.terradaily.com/>



The Antarctic Peninsula just into the Southern Ocean, reaching farther north than any other part of the continent. The southernmost reach of global warming was believed to be limited to this narrow strip of land, while the rest of the continent was presumed to be cooling or stable. Not so, according to a new analysis involving the National Aeronautics and Space Administration (NASA) data. In fact, the study has confirmed a trend suspected by some climate scientists. "Everyone knows it has been warming on the Antarctic Peninsula, where there are lots of weather stations collecting data," said Eric Steig, a climate researcher at the University of Washington in Seattle, and lead author of the study. "Our analysis told us that it is also warming in West Antarctica." The finding is the result of a novel combination of historical temperature data from ground-based weather stations and more recent data from satellites. Steig and colleagues used data from each record to fill in gaps in the other and

to reconstruct a 50-year history of surface temperatures across Antarctica.

[First Global Hawk Unmanned System For Environmental Science Research](#)

Source: <http://www.spacemart.com/>

NASA and Northrop Grumman have unveiled the first Global Hawk Unmanned Aircraft System (UAS) to be used for environmental science research, heralding a new application for the world's first fully autonomous high-altitude, long-endurance aircraft. Global Hawk can fly at altitudes up to 65,000 feet for more than 31 hours at a time. Global Hawk has many potential applications for the advancement of science, improvement of hurricane monitoring techniques, development of disaster support capabilities, and development of advanced UAS technologies.

[Road Extraction for Hazard Management: Multispectral Optical and SAR Satellite Images](#)

Source: <http://www.gim-international.com/>

Many approaches have emerged for the (semi-)automatic extraction of roads and buildings from aerial and satellite imagery. What has been achieved so far, and what has still to be done? Exemplifying recent efforts to extract road networks from multispectral and SAR satellite images, this imagery can capture nearly every spot on Earth at any time, vital for fast response after hazard or civil crisis.

[\(Back to Top\)](#)

GIS Tools, Software, Data

DETER - Alert system to support surveillance and deforestation control in Brazil

Source: Kate Lance



DETER



DETER - alert system to support surveillance and deforestation control in Brazil. In operation since 2004, Deforestation Detection in Real Time, from National Institute for Space Research (DETER) was created by the National Institute for Space Research (INPE) as an alert system to support surveillance and deforestation control. Both shallow cut and areas in process of deforestation are mapped. It is possible to detect only deforestation polygons with an area larger than 25 hectares due to spatial resolution (DETER uses MODIS sensor data from Terra satellite,

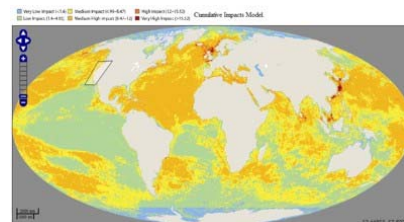
Global Spatial Data Infrastructure Latin America and the Caribbean Newsletter

and WFI sensor data from China Brazil Earth Resources Satellite -CBERS, with spatial resolution of 250 meters). Due to clouds coverage, not all deforestation larger than 25 hectares is able to be identified by the system. However, the smallest sensor resolution used by DETER is compensated by daily observation capacity, which makes the system a perfect tool to inform quickly the surveillance departments regarding deforestation. The data are organized by city council, state, IBAMA operative base and environmentalism departments, to facilitate the process of surveillance. INPE's technicians warn that the deforestation is not an event, but a process. The primary forest conversion into the shallow cut stage might take from a couple of months up to several years to be concluded. DETER systems might include cut areas in previous periods from the month being mapped or in process of progressive deforestation; however, the previous detection was not possible due to clouds coverage limitation. Thus, DETER's data do not represent a reliable evaluation of the Amazon monthly deforestation. The information about areas is to indicate priorities to the responsible Departments for the surveillance. In effect, the system provides an alert as to trends. All DETER's data are public and may be found at: www.obt.inpe.br/dete More information at: http://www.inpe.br/ingles/news/news_dest47.php

Website launch for viewing Global Marine Cumulative Impact Maps

Source: Bruce Potter

An interactive mapping website has just been launched showing the cumulative impact of human activities on marine ecosystems around the world <http://globalmarine.nceas.ucsb.edu/>. With this website you can: view maps of cumulative human impacts, and each of the individual and component datasets that were used to calculate cumulative impact; and zoom in and out to any scale and location of interest.



Installing free GIS on Computers for Telecenters

Source: Open Forum on Geographic Information Systems and Technologies

Learn GIS in local Language: Micro along with its partners has prepared a unique Self Learning GIS Kit. It is ideal for independent researcher, NGOs, rural and urban youth & (from employment generation), school children etc. For more information please log on to: <http://www.microgis.net/selflearning.html>

Micro Mapper: Community & PRA Application: Application for Rural Communities. Provides interface for village information and planning. Primary and secondary information can be entered. Village level activities, facilities can be viewed and monitored. Water budgeting is calculated. An interface is available for local language. Village resource / PRA application can be drawn with GIS interface. This is a handy, user-friendly tool. This is designed basically to use a scanned image for digitizing map and adding data, labels etc. The user can design the map page. However there is no facility to port the map file, user can take image of the prepared map file and could be sent as attachment. The software may be downloaded at: <http://www.micromict.net/jidnyasa/micromapper.html>

GeoWebCache: Open Source Software Speeds Maps to Your Favorite Clients

Source: <http://www.directionsmag.com/>



The name GeoWebCache says it all - this piece of open source software is about delivering geospatial data speedily from OGC Web Map Service standard servers using a cache (a store of predigested tiles). More information on this software may be found at: <http://geowebcache.org>

Global Spatial Data Infrastructure Latin America and the Caribbean Newsletter

[More accurate FEMA flood maps could help avoid significant damages and losses](#)

Source: <http://www.eurekaalert.org>

Flood maps are used by the Federal Emergency Management Agency (FEMA) to set flood insurance rates, regulate floodplain development, and inform those who live in the "100-year" floodplain of potential hazards, and they require continuous maintenance and revision due to land development and natural changes to the landscape. FEMA's Map Modernization Program of 2003 to 2008 resulted in digital flood maps for 92 percent of the continental U.S. population, most of who live in areas that had outdated maps or no maps at all. However, after a \$1 billion investment, only 21 percent of the population has maps that meet all of FEMA's data quality standards. The costs for improving flood maps would come from collecting, updating, modeling, and analyzing the flood-related data; increasing construction of property and businesses; losing land to development; updating regulations; and informing the public of changes. The committee found that these costs would be outweighed by benefits of more accurate flood maps, including reduced loss of life, property, and businesses; more efficient planning and response for emergency services; and preservation of natural functions of floodplains. In addition, better maps would provide more reliable measures of flood hazard, which would enable more targeted land-use regulations and structures to be insured at appropriate levels. Maps that include estimates of the height flood water will rise or exceed during a 100-year flood provide significantly more benefits than those that do not.

[\(Back to Top\)](#)

Training Opportunities

[LICJ Training Schedule 2009](#)

Source: <http://www.licj.org.jm/>



The Land Information Council of Jamaica's Training Schedule for 2009 is now available at: http://www.licj.org.jm/training_schedule_08.htm. All courses take place at the LICJ Geoinformatics Training Centre located at 191 Old Hope Road, Kingston 8, Jamaica; and run from Monday to Friday starting at 8:30a.m. - 4:30p.m. For additional information please contact Simone Lloyd at smlloyd@moa.gov.jm

[CEDDET Foundation publishes its training schedule on land issues for the first half of 2009](#)

Source: <http://www.catastrolatino.org/>

Open enrollment deadline for the application of online courses in subjects related to land management (ed. No. 6). More information: <http://cursos-online.ceddet.org/Inscripciones.php?action=cursoslanzamiento/>

Fifth International Workshop on Analysis of Multi-temporal Remote Sensing Images

Source: <http://www.selper.org/>

Between 28 and 30 of July 2009, it will be held at the University of Connecticut the Fifth International Workshop on "Multi-temporal Analysis of Remote Sensing Images". For more information please visit:

<http://clear.uconn.edu/MultiTemp2009> or <http://www.selper.org/2007/adjuntos/MultiTemp.pdf>



Global Spatial Data Infrastructure Latin America and the Caribbean Newsletter

[Workshop on Ethical Issues in Information and Communication Technologies \(ICT\) Research and Development](#)

Source: <http://cordis.europa.eu/>

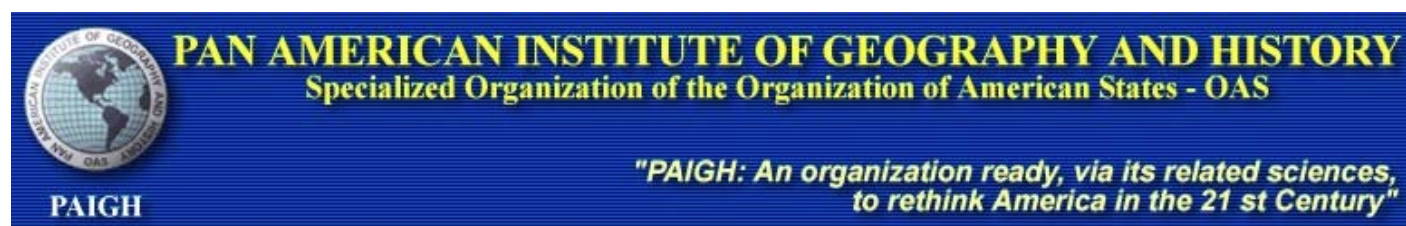
Increasing attention is being paid to ethical issues relating to research and innovation. In areas such as life sciences the ethical issues are well communicated, but for many engaged in Information and Communication Technology development these may not be so obvious. There have been a number of cases of otherwise very good ICT proposals being rejected for ethical reasons. To assist those whose work is likely to be subject to ethical review we offer a "Workshop on Ethical issues in Information and Communication Technology (ICT) Research and Development" which will take place on **5 March** 2009 in Hamburg, Germany. This workshop provides a compact introduction to the topic of ethics for ICT practitioners. The workshop will help researchers and other partners in research projects to recognize ethical issues connected with their work and thus will support R&D programmes. TuTech Innovation which is organizing the workshop was founded in 1992 as the technology transfer institute for the Hamburg University of Technology. We are offering services regarding participation in European Union (EU) funded programmes especially for publicly funded universities and SMEs (Small and Medium Enterprises). Please visit <http://tutech.de/euwork> for further details or contact Mrs Inge Meyer-Gaffke at euwork@tutech.de.

[\(Back to Top\)](#)

Funding Opportunities, Awards, Support

[PAIGH Opens Call for Technical Cooperation Projects 2010](#)

Source: <http://www.ipgh.org/>



The Pan-American Institute of Geography and History (PAIGH) is pleased to call the submission of proposals of technical cooperation projects for 2010. Application deadline is **April 30th, 2009**. The complete call and application form may be downloaded from PAIGH's website at: <http://www.ipgh.org/>

Workshop in Geospatial Analysis for Attaining the Millennium Development Goals

Source: GSDI News



The Center for International Earth Science Information Network (CIESIN) of The Earth Institute at Columbia University is now accepting applications for participation in a five-day training workshop in geospatial data analysis techniques for population and demographic research focused on attaining the Millennium Development Goals and sustainable development. Up to ten participants will be selected to attend the workshop. All workshop fees, travel, lodging will be covered for the selected participants along with a small per diem to cover meals. The potential applicant pool is global.

Global Spatial Data Infrastructure Latin America and the Caribbean Newsletter

For consideration, please complete the application form, attaching all application materials, and send to the address listed on the application. Please note: email submissions are preferred. The application may be downloaded at <http://m1e.net/c?42547263-v1WK8Os1k6PFY%403929089-0pZvJAHyh/Q3c> Deadline for applications is Monday, **February 23**, 2009. Decisions will be announced on **March 2**, 2009. This Workshop is made possible from a grant from the International Union for the Scientific Study of the Population (IUSSP)

[IABIN Request for Proposals \(RfP\) to digitize Invasive Species data](#)

Source: Rita Besana by way of Santiago Borrero

Sixth IABIN Invasive Species Thematic Network (I3N) Request for Proposals (RfP), to digitize Invasive Species data. In this final RFP, I3N has particular interest in receiving proposals from small countries that have not previously received content grants. Please note that the deadline for submitting proposals is **25 February**, 2009. We would appreciate your sending the RfPs to interested organizations in your country. For questions, please contact Rita Besana (rbesana@iabin.net) or Christine Fournier (cfournie@usgs.gov). Template for this RFP may be found [here](#).

[PATN- ToR Elaboration Manual Protected Areas](#)

Source: Boris Ramirez

Please find the Terms of Reference (ToR) for the "Elaboration of a technical orientation document (Manual) in the standardization and management of data about protected areas". Please note that the deadline for submitting proposals is **February 27**, 2009. We would appreciate your sending the ToR to interested individuals in your country. For questions, please contact Eduardo Dalcin (EduardoD@fundacaoboticario.org.br) with copy to Helena Pavese (Helena.Pavese@unep-wcmc.org) and Boris Ramirez (bramirez@iabin.net)

URISA's 2009 ESIG™ Award Process Opens

Source: <http://spatialnews.geocomm.com/>

The Urban and Regional Information Systems Association (URISA) has recently posted the application materials for its prestigious Exemplary Systems in Government (ESIG) Awards. The awards recognize exceptional achievements in the application of geospatial information technology that have improved the delivery and quality of government services. Applications may be submitted in two categories, Single Process and Enterprise Systems. Applications must be submitted by **May 11th**, 2009. Winners in each category will be recognized at URISA's 47th Annual Conference, September 29-October 2, 2009 in Anaheim, California. For more information or to review this year's winning submissions, visit <http://www.urisa.org/2009esigapplication>

[URISA Third Annual Student Paper Competition](#)

Source: <http://www.geoconnexion.com/>

The Urban and Regional Information Systems Association (URISA) is sponsoring its third annual student paper competition. The objective of the competition is to challenge undergraduate and postgraduate students to demonstrate development and effective use of information systems in both their field of study and the community. The competition is open to all eligible students but particularly those interested in careers using geographic information systems, information technology, geospatial technology, planning, and/or community development. The deadline for submissions is **May 1st**, 2009. URISA will award students cash prizes for best student-authored papers. Winners will be recognized at the 47th URISA Annual Conference in Anaheim, California, September 29th -October 2nd, 2009.

[ESRC-SSRC Visiting Fellowships call open](#)

Source: Air-I List



Welcome To

esrc | societytoday



This scheme provides funds up to £5,000 for scholars from the Americas (North, Central, South and the Caribbean) to visit and engage in collaborative activities with members of the Economic and Social Research Council (ESRC)-

Global Spatial Data Infrastructure Latin America and the Caribbean Newsletter

supported projects in Britain, or for British scholars at ESRC supported projects to visit collaborators in the Americas, between 1 June 2009 and 31 August 2010. Approximately 18 research fellowships will be awarded. Funds may be used to cover travel, accommodation and living expenses. Deadline 12 noon on **March 20th 2009**. Details at: <http://www.esrcsocietytoday.ac.uk/ESRCInfoCentre/opportunities/international/index4.aspx?ComponentId=7120&SourcePageId=7123>

[\(Back to Top\)](#)

Employment Opportunities

[Postdoctoral Fellow \(IFPRI\), Washington, DC United States](#)

Source: <http://careers.ifpri.org/>



International Food Policy Research Institute

sustainable solutions for ending hunger and poverty

The International Food Policy Research Institute (IFPRI) seeks a qualified candidate to serve as a Postdoctoral Fellow for a two-year, fixed term, renewable appointment for its Markets, Trade and Institutions Division. The Postdoctoral Fellow will conduct research on issues related to income diversification of rural households, value chain analysis, poverty maps, vertical and horizontal integration in agricultural markets and modern value chains. The Fellow will work on empirical micro econometric modeling, and value chain analysis. The position is a two-year, fixed-term appointment, and is renewable depending on performance and funding. Please note that Postdoctoral Fellow appointments at IFPRI have a maximum term of three (3) years, inclusive of any approved appointment extensions. This position is based at IFPRI headquarters located in Washington, D.C. More information on the application process may be found at: <http://careers.ifpri.org/DetailIFPRI.asp?ifpri08-161>. If you have technical difficulties and cannot access the online application form or have questions about the form, please send an email with your question to ifrijobs@cgiar.org

Ph.D. and Post Doctoral Opportunities in Ireland - Climate Change in Coastal Zone

Source: Sea-GIS list



Coastal and Marine Resources Centre

Ionad Acmhainní Cósta is Mara

Adaptive Co-management as a Model for Participatory Governance in Planning for Climate Change in the Coastal Zone Applications are invited for a three year PhD studentship or a three year postdoctoral position on Adaptive Co-Management (ACM) as a model for participatory governance in planning for climate change in the coastal zone. The project is grant aided under the Science, Technology, Research and Innovation for the Environment (STRIVE) Programme 2007-2013, with the support of the Environmental Protection Agency (EPA). The successful candidates will be based in the Coastal and Marine Resources Centre (CMRC), University College Cork, Ireland, <http://cmrc.ucc.ie>. Contact: Grainne Lynch, Coastal and Marine Resource Centre, email: grainne.lynch@ucc.ie

[\(Back to Top\)](#)

Global Spatial Data Infrastructure Latin America and the Caribbean Newsletter

Other

[Applying Ecological Knowledge to Land Use Decisions](#)

Source: Kate Lance

The Inter-American Institute for Global Change Research (IAI) has recently concluded a synthesis of several of its collaborative research networks on terrestrial ecosystems, forests, grasslands, agriculture and river margins that explored how environmental science may be used to guide land use decisions. The network's investigators contributed results and thoughtful analysis that go beyond scientific papers to provide an interdisciplinary vision of the issues and opportunities in planning land use for the future.



[Lincoln Institute of Land Policy - Survey on Indicators of Informality](#)

Source: Program for Latin America, Lincoln Institute of Land Policy

The Program for Latin America and the Caribbean of the Lincoln Institute of Land Policy invites you to participate in a new initiative of the Institute in Latin America. The aim is to test a new method of generating and disseminating information on hot topics and experts and stakeholders in land policy in Latin America. This first survey seeks to determine the consistency of the indicators of informality in the region, so please go to the link below to fill it. The questionnaire to be completed will be open until **8 February** 2009. Please log on to:

http://www.surveymonkey.com/s.aspx?sm=kmfUCMimmP_2beYIXHdW6axw_3d_3d. In agreeing to participate, you can identify with your e-mail or choose to send the questionnaire anonymously. In the latter case, you can enter a username or password that you make up for this purpose.

[Remote Sensing the US Presidential Inauguration](#)

Source: <http://caribbean-gis.blogspot.com/>

Images from space are fun as well - see/download a copy of the shot from space of what CNN called "The Moment" - the Inauguration of US President Barack Obama: 0.5 m resolution GeoEye-1 imagery. A better resolution JPEG is also available. Photo: courtesy of GeoEye.

[Slight Changes in Climate may Trigger Abrupt Ecosystem Responses](#)

Source: USGS Newsroom by OC_Web@usgs.gov (Office of Communications Web Group)



Slight changes in climate may trigger major abrupt ecosystem responses that are not easily reversible. Some of these responses, including insect outbreaks, wildfire, and forest dieback, may adversely affect people as well as ecosystems and their plants and animals. The U.S. Geological Survey led a new assessment of the implications of a warming world on "ecological thresholds" in North America. The report, which was commissioned by

the U.S. Climate Change Science Program, and authored by a team of federal and academic climate scientists, is based on a synthesis of published scientific literature and addresses what research and steps are needed to help mitigate resulting effects. An ecological threshold is the point at which there is an abrupt change in an ecosystem that produces large, persistent and potentially irreversible changes. To view the full report, Synthesis and Assessment Product 4.2: Thresholds of Climate Change in Ecosystems; please visit <http://climatescience.gov>

[Mobile Internet to Grow Rapidly by 2010](#)

Source: <http://www.informationweek.com/>

The report, titled "[Mobile Internet 2010](#)," said there are more than 4 billion wireless subscribers globally and many of these will be using their handset as the main Internet terminal. But in order for that potential to be achieved, the report

Global Spatial Data Infrastructure Latin America and the Caribbean Newsletter

said carriers need to boost their networks, and handsets makers need to do a better job of incorporating Web services into a phone's user interface.

[Don't wait to produce renewable energy sustainable, urges IUCN](#)

Source: <http://cmsdata.iucn.org/>

A hands-on guide to producing bioenergy without harming the environment was launched today by the International Union for Conservation of Nature (IUCN) to coincide with the World Future Energy summit in Abu Dhabi. The publication addresses a range of sustainability issues from gender to invasive species; water management to landscape planning – some of which are rarely included in the bioenergy debate. The document may be downloaded at: http://cmsdata.iucn.org/downloads/biofuels_compilation_of_tools_final.pdf

[\(Back to Top\)](#)

Americas: Conferences, SDI Events – Year 2009

[Year 2009](#) [January](#) [February](#) [March](#) [April](#) [May](#) [June](#) [July](#) [August](#) [September](#) [October](#) [November](#) [December](#)
[Year 2010](#) [January](#) [February](#) [March](#) [April](#) [May](#) [June](#) [July](#) [August](#) [September](#) [October](#) [November](#) [December](#)

| FEBRUARY 2009 | | |
|---------------------|--------------------|---|
| 1-6 | Cancun, México | GEOWS 2009 The International Conference on Advanced Geographic Information Systems & Web Services, Call for Papers: http://www.iaia.org/conferences2009/CfPGEOWS09.html General page: http://www.iaia.org/conferences2009/GEOWS09.html |
| 2-9 <i>*NEW*</i> | Colima, Mexico | XI International Meeting “Volcán de Colima” E-mail: reunion2009@ucol.mx Web: http://www.ucol.mx/volcan/reunion2009 |
| 3-5 | Sacramento CA, USA | 2009 CA/HI/NV Regional User Group (CAHINVRUG) Conference |
| 4-5 | Bogotá, Colombia | Discussions on Copyright from Science, Art, Libraries and Education National University of Colombia |
| 5 <i>*NEW*</i> | Webinar in USA | Innovative GIS Strategies for Jump Starting Your Stormwater Utility |
| 8-11 | Charleston SC, USA | 13th Annual GIS/CAMA Technologies Conference |
| 9-13 | Havana, Cuba | 6th International Congress GEOMATICA 2009 Contact: Tatiana Delgado tatiana@geocuba.co.cu |
| 9-13 | Havana, Cuba | Informatics 2009 13th International Convention and Fair http://www.informaticahabana.com/?q=es/node/360 |

Global Spatial Data Infrastructure Latin America and the Caribbean Newsletter

| | | |
|------------------------------|------------------------|---|
| 17-18 | Bloomington IN, USA | 2009 Indiana GIS Conference |
| 18-20 | Washington DC, USA | 2009 ESRI Federal User Conference (FedUC) |
| 19-20 | Raleigh NC, USA | North Carolina GIS Conference |
| 20-21 | Palo Alto CA, USA | The Second International Workshop on Intercultural Collaboration (IWIC2009) |
| 20-22 | Salt Lake City UT, USA | ACSM-MARLS-UCLS-WFPS Conference E-mail: conference@wfps.org |
| 22-25 | Annapolis MD, USA | National States Geographic Information Council (NSGIC) Mid-Year Conference |
| 23-25 | Houston TX, USA | 2009 Petroleum User Group (PUG) Conference |
| 23-25 | Las Vegas NV, USA | Trimble Dimensions 2009 |
| 23-27 | Mexico City, Mexico | First meeting of the Group of Friends of Co-Chairs on Liability in the Context of the Cartagena Protocol on Biosafety Further information: http://www.cbd.int/biosafety/ |
| 25 *NEW* | Gainesville FL, USA | 2nd Annual Florida Region of ASPRS Geospatial Symposium |
| 25-27 *NEW* | Tampa FL, USA | Maptitude Mapping Software Training |

MARCH 2009

| | | |
|-----------------------------|---------------------|---|
| 1-6 | Mexico D.F, Mexico | Meeting of the Internet Corporation for Assigned Names and Numbers (ICANN 34) |
| 3-5 *NEW* | Cocoa Beach FL, USA | Committee on Earth Observation Satellites (CEOS) SIT-23 |
| 5-6 *NEW* | Panama City, Panama | Seminar and Workshop "Towards Development of the Spatial Data Infrastructure of Panama - IPDE" |
| 9-10 *NEW* | Washington DC, USA | Joint FIG / World Bank Conference - Land Governance in Support of the Millennium Development Goals: Responding to New Challenges Contact: Markku Villikka / E-mail: fig@fig.net |

Global Spatial Data Infrastructure Latin America and the Caribbean Newsletter

| | | |
|---|-------------------------------|--|
| 9-11 *NEW* | San José, Costa Rica | Fifth Coordination Meeting for Governments and Organizations Implementing or Funding Biosafety Capacity-building Activities Further information: http://www.cbd.int/biosafety/ |
| 9-12 | Bogotá, Colombia | First National Congress on Protected Areas "Toward a Complete, Representative, and efficiently managed Protected Areas National System" Contact: Julia Miranda Londoño Email: direcciongeneral@parquesnacionales.gov.co |
| 9-13 | Baltimore MD, USA | ASPRS Annual Conference |
| 15-18 | Chicago IL, USA | 12th Annual American Association of Airport Executives (AAAE) GIS Conference & Exhibition |
| 16-20 *UPDATED* | Havana, Cuba | Geosciences 2009: 3rd Cuban Convention on Earth Sciences http://www.cubacienciasdelatierra.com info@cubacienciasdelatierra.com |
| 21-24 | Palm Springs CA, USA | 2009 ESRI Worldwide Business Partner Conference (BPC) |
| 22-27 | Las Vegas NV, USA | Association of American Geographers Annual Meeting |
| 23-26 | Palm Springs CA, USA | 2009 ESRI Developer Summit |
| March 28 - April 1 *NEW* | Manama, Bahrain | PetroGIS |
| March 31 - April 2 *NEW* | Los Angeles, Anaheim, CA, USA | World Congress on Computer Science and Information Engineering CSIE 2009 E-mail: csie2009@world-research-institutes.org |

APRIL 2009

| | | |
|-----------------------------|---------------------------|--|
| 3-7 | Montevideo, Uruguay | 12th Meeting of Latin American Geographers "Walking through Latin America in Transformation" Contact: info@egal2009.com |
| 5-8 | Oklahoma City OK, USA | GeoSpatial Information Systems for Transportation - GIST 2009 |
| 6-9 | Sacramento CA, USA | 15th Annual CalGIS Conference |
| 8-9 *NEW* | Ontario, Canada | Expedition 2009 – DMTI's Annual Customer and Partner Conference |
| 8-10 *NEW* | Monterey, California, USA | 2009 SSA Annual Meeting Web: http://www.seismosoc.org/meetings/index.php#2009 |

Global Spatial Data Infrastructure Latin America and the Caribbean Newsletter

| | | |
|------------------------------|----------------------------|--|
| 13-17 *NEW* | Cholula, Puebla, Mexico | International Conference on Water, Environment and Health Sciences: The Challenges of Climate Change Email: icwehs@yahoo.com / Web: www.udlap.mx/ICWEHS |
| 14-17 *NEW* | Mendoza, Argentina | <u>Meeting of the Argentinean Association of Geophysics and Geodesy</u> |
| 14-17 *NEW* | Malargüe, Argentina | 3rd. International Maar Conference Email: info@3imc.org Web: http://www.3imc.org/ |
| 19-22 | Tampa FL, USA | <u>GITA's Geospatial Infrastructure Solutions Conference 32</u> |
| 20-24 *NEW* | Montreal, Canada | Meeting of the Ad Hoc Technical Expert Group on Risk Assessment and Risk Management under the Cartagena Protocol on Biosafety Further information: http://www.cbd.int/biosafety/ |
| 21-23 *NEW* | Kearney NE, USA | <u>2009 Nebraska GIS/LIS Association Symposium</u> |
| 23 | Tampa FL, USA | <u>Oracle Spatial User's Conference</u> |
| 25-30 | Natal, Brazil | <u>14th SBSR - Brazilian Symposium on Remote Sensing</u> Contact: sbsr@dsr.inpe.br |
| 27-29 | Jacksonville FL, USA | <u>2009 Southeast Regional User Group (SERUG) Conference</u> |

MAY 2009

| | | |
|------------------------------|------------------------------|---|
| 4-6 | Denver CO, USA | <u>2009 ESRI Business GIS Summit</u> |
| 6-8 *NEW* | Los Polvorines, Argentina | <u>First National Congress on Ecology and Soils Biology: CONEBIOS2009</u> Contact: Dr. Fernando Momo Correo electrónico: conebios2009@ungs.edu.ar |
| 10-14 *NEW* | Montreal, Canada | <u>5th World Conference on Environmental Education</u> |
| 11-14 | Charlotte NC, USA | <u>BE Conference 2009</u> |
| 13-15 | Santiago de Cuba, Cuba | <u>4th International Conference on Integrated Management of Coastal Zones, CARICOSTAS 2009</u> Contact E-mail: ofelia_haydee@yahoo.es / ofelia@csh.uo.edu.cu / caricostas@cemzc.uo.edu.cu |

Global Spatial Data Infrastructure Latin America and the Caribbean Newsletter

| | | |
|------------------------------|---------------------|---|
| 19-20 | Grantville PA, USA | <u>Seventeenth Annual Pennsylvania GIS Conference Announced</u> |
| 19-21 | Burlingame CA, USA | <u>Where 2.0</u> |
| 19-22 | Quebec, Canada | <u>IUFRO Conference on Extending Forest Inventory & Monitoring Over Space & Time</u> Contact: Dr. Ronald E. McRoberts / E-mail: rmcroberts@fs.fed.us |
| 20-24 | Washington DC, USA | <u>International Congress on Marine Conservation</u> Contact: IMCCprogram@conbio.org |
| 24-27 *NEW* | Toronto, Canada | Joint Assembly AGU 2009 Web: http://www.agu.org/meetings.shtml |
| 25-27 *NEW* | Baton Rouge LA, USA | <u>CGGM 2009</u> Contact: iglesias@unican.es |
| 26-29 *NEW* | Victoria, Canada | <u>CGI 2009</u> Contact: blob@cs.uvic.ca |
| 28-30 *NEW* | Victoria, Canada | <u>CAe 2009</u> Contact: pmh@cs.bath.ac.uk |

JUNE 2009

| | | |
|------------------------------|------------------------------|--|
| 1-4 | Vancouver, Canada | <u>GeoTec 2009</u> |
| 3-5 | Orlando FL, USA | <u>Pitney Bowes Business Insight User Conference</u> |
| 5-8 | Providence Rhode Island, USA | <u>Second GIS in Public Health Conference: "Putting Health in Place with GIS"</u> |
| 8-9 | Estes Park CO, USA | <u>GeoGathering 2009</u> |
| 13-16 | Green Bay WI, USA | <u>2009 Indigenous Mapping Network Conference</u> |
| 15-18 | Washington DC, USA | <u>Intergraph 2009</u> |
| 15-19 | Rotterdam, The Netherlands | <u>GSDI - 11 Conference</u> Theme: "SDI convergence on global level: Bridging the SDI's in Europe, the America's, Asia and the Pacific, and Africa" Contact: Harlan Onsrud, e-mail: onsrud@gsdi.org |
| 17-19 *NEW* | Heredia, Costa Rica | <u>XII Ibero-American Conference on Geographic Information Systems</u> E-mail: sibsig@una.ac.cr |

Global Spatial Data Infrastructure Latin America and the Caribbean Newsletter

JULY 2009

| | | |
|------------------------------|-----------------------------------|--|
| 2-15 *NEW* | Rio de Janeiro, Brazil | XXVII General Assembly IAU Web: www.iau.org |
| 5-8 | St. John's (Newfoundland), Canada | 6th International Symposium on Spatial Data Quality (ISSDQ 2009), "Quality: From Process to Decisions" Contact: Rodolphe Devillers, E-mail: issdq2009@mun.ca |
| 6-10 | Havana, Cuba | <u>International Convention on Environment and Development</u> Contact: MsC. Isabel Torna Falco E-mail: convencion@ama.cu |
| 10-13 | Orlando FL, USA | <u>The 2nd International Symposium on Academic Globalization: AG 2009 Jointly with the 13th Multi-conference on Systemics, Cybernetics and Informatics: WMSCI 2009.</u> E-mail: ag@mail.iis2009.org |
| 10-13 *NEW* | Orlando FL, USA | <u>IMETI 2009, Engineering and Technological Innovation (IMETI)</u> E-mail: imeti@mail.iis2009.org |
| 10-13 *NEW* | Orlando FL, USA | <u>AG 2009 Academic Globalization (AG)</u> E-mail: ag@mail.2009iisconferences.org |
| 10-13 *NEW* | Orlando FL, USA | <u>CCCT 2009 Computing, Communications and Control Technologies (CCCT)</u> E-mail: ccct@mail.2009iisconferences.org |
| 10-13 *NEW* | Orlando FL, USA | <u>KGCM 2009 Knowledge Generation Communications Management (KGCM)</u> E-mail: kgcm@mail.2009iisconferences.org |
| 11-14 | San Diego CA, USA | <u>2009 ESRI Survey & Engineering GIS Summit</u> |
| 11-14 | San Diego CA, USA | <u>2009 ESRI Education User Conference</u> |
| 13-17 | San Diego CA, USA | <u>29th ESRI International User Conference</u> |
| 14-16 | São Paulo, Brazil | <u>GEOBrasil Summit 2009</u> 10° International Geoinformation Congress and Exhibition Brazil Contact: info@geobr.com.br |
| 19-29 *NEW* | Montreal, Canada | <u>iaMas-iapsO-iaCs-Assembly-2009 (MOCA-09)</u> Web: http://iamas-iapso-iacs-2009-montreal.ca/ |
| 21-23 *NEW* | São Paulo, Brazil | <u>Geosummit Latin-American 2009</u> Web Site: http://www.geobr.com.br |

Global Spatial Data Infrastructure Latin America and the Caribbean Newsletter

| | | |
|--------------|--------------------------------|---|
| 21-24 | Presidente Prudente, Brazil | 6th International Symposium on Mobile Mapping Technology - MMT'09 E-mail: mmt2009@fct.unesp.br |
| 27-31 | Vancouver BC, Canada | GeoWeb 2009 |

AUGUST 2009

| | | |
|--|----------------------------|--|
| 2-15 *NEW* | Rio de Janeiro, Brazil | XXVII General Assembly International Astronomical Union (IAU) Web: www.iau.org |
| 3-7 *NEW* | New Orleans, Louisiana | SIGGRAPH 2009 |
| 12-14 *NEW* | Fairfax VA, USA | The 17th International Conference on Geoinformatics (Geoinformatics 2009) Contact: info@geoinformatics2009.org |
| August 31 – September 4 *NEW* | Buenos Aires, Argentina | International Association of Geodesy Scientific Assembly IAG 2009 "Geodesy for Planet Earth" Contact: Dr. Charles K Toth, E-mail : toth@cfm.ohio-state.edu |

SEPTEMBER 2009

| | | |
|------------------------------|------------------|--|
| 13-16 | Columbus OH, USA | APWA's 2009 International Public Works Congress and Expo |
| 13-17 | Houston TX, USA | GIS for Oil & Gas Conference and Exhibition |
| 15-17 *NEW* | Loveland CO, USA | GIS in the Rockies |
| 22-23 *NEW* | Plymouth MI, USA | PLM Road Map 2009 |

OCTOBER 2009

| | | |
|------------|--|---|
| 4-7 | Campos Do Jordão, São Paulo, Brazil | Latin American Conference IALE 2009 "Landscape Ecology in Latin America: Challenges and Perspectives" Contact: Congress Secretariat and Information E-mail: ialebr2009@eventus.com.br |
| 5-7 | Westin Westminster CO, USA | Location Intelligence 2009 |

Global Spatial Data Infrastructure Latin America and the Caribbean Newsletter

| | | |
|--------------|----------------------------|---|
| 8-25 | Buenos Aires, Argentina | 13th World Forestry Congress |
| 18-21 | San Antonio TX, USA | GEOINT 2009 |

NOVEMBER 2009

| | | |
|--------------|-----------------|---|
| 15-21 | Santiago, Chile | ICC2009- 24th International Cartographic Conference 2009 |
|--------------|-----------------|---|

DECEMBER 2009

| | | |
|------------------------------|-----------------------------------|---|
| 14-18 *NEW* | San Francisco, California, USA | Fall Meeting AGU Web: http://www.agu.org/meetings.shtml |
|------------------------------|-----------------------------------|---|

YEAR 2010

[Year 2010](#) January February March [April](#) May June [July](#) August September October November December

APRIL 2010

| | | |
|------------------------------|------------------------|---|
| 18-22 *NEW* | Kansas City MO, USA | MAGIC 2010 Symposium |
| 26-30 | San Diego CA, USA | ASPRS Annual Conference E-mail: asprs@asprs.org |

JULY 2010

| | | |
|------------------------------|------------------------|-------------------------------|
| 26-30 *NEW* | Los Angeles CA, USA | SIGGRAPH 2010 |
|------------------------------|------------------------|-------------------------------|

[\(Back to Top\)](#)

Please mention SDI-LAC as source of information in any correspondence you may have on items in this issue

To subscribe to SDI-LAC, please do so online at:
<http://www.gsdi.org/newslist/gsdisubscribe.asp>
Nancy Aguirre, PAIGH, Editor cnaguirre@ipgh.org
Global Spatial Data Infrastructure Association,
<http://www.gsdi.org>

DISCLAIMER:
GSDI, PAIGH and the Editor will not be held liable for any errors, mistakes, misprints or incorrect information. Copyright © 2009. All rights reserved.