

Global Spatial Data Infrastructure Latin America and the Caribbean Newsletter

SDI-LAC

August 2010

Vol. 7, No. 8

Spatial Data Infrastructure-Latin America and the Caribbean (SDI-LAC) is a regional, monthly, and free, electronic newsletter from the [Global Spatial Data Infrastructure Association](#) (GSDI). It focuses on aspects related with Spatial Data Infrastructure, and on GIS, remote sensing, and data management issues, related with SDI in Latin America and the Caribbean. It aims to raise awareness, provide useful information to strengthen national SDI initiatives, and support synchronization of regional efforts.



The [Pan-American Institute of Geography and History](#) (PAIGH), member organization of GSDI, and the [Permanent Committee on Geospatial Data Infrastructure for the Americas](#) (PC-IDEA), promote SDI development in the region. The newsletter is prepared by PAIGH for GSDI.

[Message from the Editor](#)

[Input to this Issue](#)

[SDI News, Links, Papers, Presentations](#)

[Articles and Publications of the Month](#)

[Geospatial Research and Applications](#)

[GIS Tools, Software, Data](#)

[Training Opportunities](#)

[Funding Opportunities, Awards, Support](#)

[Employment Opportunities](#)

[Other](#)

[Americas: Conferences, SDI Events](#)



Message from the Editor

We are pleased to welcome Kevin Mayall, PhD GISP, who has worked with developing GIS in Bermuda for many years, first as a civil servant in the Government, and now as a consultant acting on SDI development and GIS implementation across the island, as correspondent member to SDI-LAC Newsletter for Bermuda!

Due to an increasing volume of information on events, the respective section will be restricted to those events taking place in the Americas. However, for "The Rest of the World: Conferences, SDI Events", please find a link to upcoming events of global or major international interest in GSDI webpage at: <http://www.gsdi.org/events/upcnf.asp>

We kindly inform that SDI-LAC Newsletter is taking correspondent members in each country of the LAC region. Next issues will include their contributions. If you would like to become a correspondent for your country please contact Nancy Aguirre cnaquirre@ipgh.org. In principle the only requirement is that you are an active member in the Spatial Data Infrastructure activities of your country.

If you have news or information related to GIS, remote sensing, and Spatial Data Infrastructure that you would like to highlight (e.g., projects, conferences, workshop announcements, publications, reports, websites of interest, etc.), kindly send them in. We would be happy to include them in the newsletter.

We also encourage you to send to the editor your comments and suggestions for the continuous improvement of SDI-LAC Newsletter. **PLEASE share this newsletter with colleagues who may find the information useful, and ideally they will subscribe themselves.**

Back issues of the newsletter are at the GSDI website: <http://www.gsdi.org/newsletters.asp>

Editor, Nancy Aguirre, Pan-American Institute of Geography and History (PAIGH), <http://www.ipgh.org>, cnaquirre@ipgh.org

SDI-LAC Newsletter



Vol. 7, No.8

Global Spatial Data Infrastructure Latin America and the Caribbean Newsletter

Input to this Issue

Thanks for their contributions to this SDI-LAC Newsletter issue to:

Francisco J. Ariza	Department of Cartographic Engineering, Geodesy and Photogrammetry, Polytechnic School, University of Jaén, Spain
Santiago Borrero	Secretary General, Pan-American Institute of Geography and History, PAIGH, Mexico
Arturo Brun-Martinez	Architect, Bogota, Colombia
Iain Greenway	FIG Vice-President 2009-2012, Chief Survey Officer of Northern Ireland and Director of Operations in Land and Property Services, UK
Ellen Hines	IMCC2 Conference Chair, Associate Professor, Department of Geography and Human Environmental Studies, San Francisco State University, USA
Issai Jimenez	Department of Planning Information, Planning Secretariat, Programming and Budget, Government of the State of Nayarit, Mexico
Kate Lance	SERVIR Coordinator, NASA/USRA, Huntsville, AL, USA
Antonio F. Rodriguez	IDE-AECID Course Coordinator, Spain
Patricia Solis	Director of Outreach and Strategic Initiatives, Association of American Geographers, Washington, DC, USA
Eric van Praag	GeoSUR Regional Program Coordinator, Venezuela
Kenneth Young	Chair and Professor, Department of Geography and the environment, University of Texas at Austin, USA

[\(Back to Top\)](#)

SDI News, Links, Papers, Presentations

GSDI 12 World Conference Update



The GSDI 12 World Conference 2010 will take place in the garden city of Singapore, at the Suntec Singapore International Convention & Exhibition Centre from 19 to 22 October 2010. This conference is organized by partners - the GSDI Association, the Permanent Committee on GIS Infrastructure for Asia & the Pacific (PCGIAP) and the Singapore Land Authority (SLA).

There are three major components in this conference:

- 12th edition of the GSDI Conference;
- 16th annual meeting of the Permanent Committee on GIS Infrastructure for Asia & the Pacific (PCGIAP); and
- Trade Exhibition.

The theme for this conference is Realising Spatially Enabled Societies. This conference will explore the complementary roles of government, private industry and the academic community in realizing better means for sharing geographic data and technologies and developing improved location-based services for meeting real world needs. Check out the program, free workshops and affiliated meetings at <http://www.gsdi.org>.

Global Spatial Data Infrastructure Latin America and the Caribbean Newsletter

Singapore, a dynamic city rich in contrast and colour, invites you to come and engage yourself in an intellectual exchange with leaders and experts in the geospatial industry.

SPEAKERS:

Distinguished Keynote and Featured Speakers at GSDI 12 to-date include:

- Ivan B. DeLoatch, Staff Director, Federal Geographic Data Committee;
- Abbas Rajabifard, President, GSDI Association;
- Ng Siau Yong, Director of Geospatial Division, Singapore Land Authority, Singapore SDI;
- Santiago Borrero, Secretary General, Pan-American Institute of Geography and History (PAIGH/IPGH);
- Stig Enemark, President, International Federation of Surveyors (FIG);
- Mark Reichardt, President and Chief Executive Officer, Open Geospatial Consortium, Inc. (OGC);
- Ian Williamson, Professor of Surveying and Land Information, Centre for Spatial Data Infrastructures and Land Administration, Department of Geoinformatics, University of Melbourne;
- Greg Scott, National Mapping & Information Group Leader, Geospatial & Earth Monitoring Division, Geoscience Australia

SOCIAL EVENTS:

Tuesday, 19th October

WELCOME RECEPTION: Let's Fly! The Welcome Reception at the GSDI12 World Conference will be a celebration of Singapore's cultural diversity by bringing together gastronomical delights from different local ethnic groups. It will be an excellent opportunity for you to meet other conference attendees in the spectacular surroundings of the Singapore Flyer - the largest observation wheel in the world. Delegates will have a free ride on the capsules and enjoy breathtaking views of the city coming alive at night. This networking event is a great opportunity to bring your discussions to greater heights and is not to be missed!

When: Tuesday 19 October, 6.30pm - 9.30pm

Where: The Singapore Flyer, Megu Event Hall

Thursday, 21st October

CONFERENCE DINNER: There is no better way to spend an evening in Singapore! Wine, dine and network at this dinner, held on the second to last day of the GSDI 12 conference. Revel in the charm of exotic Singapore at the Asian Civilisations Museum, and look forward to experience Singapore's history, culture, architecture and cuisine. The dinner will feature a sumptuous spread of Singapore's most well-loved local delights. This event also presents an opportunity for delegates to meet and socialise amidst the city lights overlooking the Singapore River! Come join in this unique, must-have experience during your stay in the city! More details on the dinner will be provided at a later date.

REGISTRATION for GSDI 12 is now OPEN at <http://gsdi.org/gsdi12/register.html>

For more information on the conference, please visit us at <http://www.gsdi.org/gsdi12> or follow us on Twitter at <http://twitter.com/GSDI12>.

GSDI Small Grants Program Recipients

Source: GSDI News

The Global Spatial Data Infrastructure (GSDI) Association together with the manpower and financial support of the US Federal Geographic Data Committee (FGDC) is dedicated to international cooperation and collaboration in support of

Global Spatial Data Infrastructure Latin America and the Caribbean Newsletter

local, national, and international spatial data infrastructure developments that would allow nations to better address social, economic, and environmental issues of pressing importance. In addition, the GISCorps of The Urban and Regional Information Systems Association (URISA) is an important partner in this endeavor by providing manpower contributions to worthy proposals. This partnership is committed to bringing about an infrastructure that will allow users globally to access spatial data at a variety of scales from multiple sources that ultimately will appear seamless to all users through adoption of common, international standards, key architecture principles, and approaches for capacity building in developing countries. The GSDI initiatives also link national SDI efforts with the vision and goals of the Group on Earth Observation (GEO) and its Global Earth Observations System of Systems (GEOSS).

The 2009-10 GSDI Small Grants call for proposals was issued in August of 2009 resulting in 52 proposals of which, 32 were accepted and referred to regional review committees for their evaluation and recommendations.

It is with pleasure that the GSDI announces the following winners of the 2009-10 GSDI Small Grants. Additionally the GISCorps is providing time and services support to Nigeria and is continuing to evaluate others for potential support.

AFRICA

- *Africa* - Spatial data taxonomy and metadata management for climate change policy development. Primary Contact: Geoinformation Systems Section of the United Nations Economic Commission for Africa
- *Malawi* - Addressing the needs in terms of geographic information and GIS capacities to support HIV/AIDS monitoring, evaluation and response in Malawi. Primary Contact: National Spatial Data Centre (NSDC) under the umbrella of the Malawi Geographic Information Council (MAGIC)
- *Rwanda* - Development of a Spatial Data Sharing Policy Document. Primary Contact: Centre for GIS and Remote Sensing, the National University of Rwanda
- *West Africa* - GIS and Spatial Data Infrastructure - Capacity Building for Professionals for Disaster Management in West Africa. Primary Contact: Regional Centre for Training in Aerospace Surveys (RECTAS)
- *Botswana* - Integrating cultural heritage in the National Spatial Data Infrastructure of Botswana. Primary Contact: Archaeology Unit, History Department, University of Botswana
- *South Africa* - The Cape Urban Observatory Geo-Portal. Primary Contact: School of Architecture, Planning and Geomatics, University of Cape Town
- *Tanzania* - Assessment of SDI Readiness Index: A Case Study of Dar Es Salaam City. Primary Contact: School of Geospatial Sciences and Technology, Department of Geoinformatics, Ardhi University, Dar Es Salaam, Tanzania

ASIA/PACIFIC

- *Philippines* - Assessing the SDI needs of NGOs in the Philippines: Non-profit groups as stakeholders in spatial data infrastructure. Primary Contact: TAO-Pilipinas, Inc., Quezon City, Philippines
- *Timor Leste* - Build the future of Timor-Leste with Maps. Primary Contact: National Directorate of Land and Property and Cadastral Services, Ministry of Justice, Timor-Leste

AMERICAS

- *Colombia* - Developing and Presenting a Course in Spatial Data Infrastructure. Primary Contact: Research and Development for Geographic Information Centre, Geographic Institute Agustín Codazzi, Bogota, Colombia
- *Ecuador (Amazon GISNET)* - SDI First Results Dissemination of the Atlas Project of 10 Indigenous Nationalities of the Amazonian Lowlands of Ecuador (AmazonGISnet). Primary Contact: The University San Francisco de Quito, Campus Cumbaya, Ecuador

EUROPE

- *Serbia* - Fostering the Use of Spatial Data among Small and Medium Enterprises (SME). Primary Contact: Republic Geodetic Authority, Republic of Serbia; Luka Jovi_i_

URISA GISCORPS:

SDI-LAC Newsletter

Global Spatial Data Infrastructure Latin America and the Caribbean Newsletter

The GISCorps of URISA is providing time and services to Nigeria and is continuing to evaluate others for potential support.

- *Nigeria* - Creation of an Online Geo Information Portal and Clearinghouse Node. Primary Contact: Geographical Resources for Development Centre, Lagos, Nigeria

ACKNOWLEDGEMENTS

The Program appreciates the contributions of the regional review committees and their chairs:

- Africa - EIS Africa, Sives Govender, Executive Secretary
- Americas - PAIGH, Santiago Borrero, Executive Secretary
- Asia/Pacific - University of Melbourne, Abbas Rajabifard, President GSDI
- Europe - EUROGI; Mauro Salvemini, President

Contact Info: astevens@godi.org <http://www.godi.org>

GeoSUR program receives international award in the field of geosciences

Source: Eric Van Praag and Santiago Borrero



GeoSUR Program, an initiative led by the Vice President of Infrastructure of the Andean Development Bank (CAF), received an international award from ESRI for his contribution to the development of first geographic information network in South America. The award was presented at the ESRI International Users Conference held in San Diego, United States, between July 12 and 16 this year. The award was received by Eric van Praag and Jesus Suniaga of VIN on behalf of the CAF. GeoSUR Program, led by CAF and the Pan-American Institute of Geography and History (PAIGH) with technical support from the United States Geological Survey (USGS), makes available geographic information to the public of South America and Panama that is useful for planning and analyzing development activities. GeoSUR develops geographic services freely available on a Web platform that allows users to obtain, locate, view and analyze spatial information in an easy and simple way. GeoSUR allows modifying the analyses and decision making on development planning. Among the achievements of the Programme are included the development of the first portal that provides access to spatial information to South American countries in one place. More than thirty South American institutions with its outstanding geographical institutes and ministries of environment participate with GeoSUR and have their spatial information available through the Portal. Another important accomplishment of the Programme has been the launching of a Topographic Processing Service that allows data modeling and production derived from a 30-meter resolution elevation model of South America. This service allows defining watersheds, and producing elevation profiles and slope maps - among other features available - for any area of South America. The Service is the first of its kind in the world, considering its geographical extent and high resolution. Among other attainments, is worth noting the development of a mapping service for querying spatial data in South America, with emphasis on infrastructural data, the IIRSA Initiative and CAF georeferenced project information, as well as information available on the Condor System. Access to the mentioned services is free and requires no special software to use.

Global Spatial Data Infrastructure Latin America and the Caribbean Newsletter

All services are available on the Portal at www.geosur.info. The following recently published articles by well known international journals provide more information on the scope of the Program:

- [ArcNews Magazine Article](#)
- [Geoconnexion Magazine Article](#)

For more information on GeoSUR please contact the Program Coordinator tel. +58 212 209 6554 or geosur@caf.com.

[First plenary meeting on ISO standards in Spanish took place in Colombia](#)

Source: <http://www.snit.cl/>

First plenary meeting of the Project to harmonize ISO terminology and standards in Spanish was held on July 15-16 in Colombia with participation of geospatial information standards' experts from Spain, Colombia, Mexico, Cuba, Chile and Ecuador. The meeting was held at headquarters of the Geographic Institute Agustin Codazzi in Bogota. At the regional level, a project on "Harmonization of ISO Terminology and Standards in Spanish language" is being developed by the National Geographic Institute of Spain (in Spanish IGN) in conjunction with the Pan-American Institute of Geography and History (PAIGH). The aim of this work is to achieve maximum synergy based on the effort that Latin American countries have been developing for the Spanish version of the ISO Standards.



[Information integration gained support from 26 countries](#)

Source: <http://www.concar.ibge.gov.br/>



Gathered at the Meeting on Global Interoperability, held in Rio de Janeiro between the 4 and 6 of May, representatives of public and private sectors and civil society members from 26 developing countries signed the commitment to work together in developing and implementing interoperability standards. The goal is to align public

policies to qualify the citizen service. These standards are intended to enable a continuous flow of information between government and society in order to improve the provision of public services. This will enable real time information exchange between different architecture and maturity information systems. The report said the exchange of information and data between different countries, regardless of their technology platforms, is essential for reducing poverty and social inequality. Pertinent signatory countries considered necessary the integration of information and communication technologies for growth acceleration and meeting the Millennium Development Goals proposed by United Nations. The full text is available at: <http://www.gif4dev.net/>. For the Interim Secretary of Logistics and Information Technology of the Ministry of Planning, Loreni Foresti, holding the event in Brazil indicates that the interoperability policy of the Brazilian government is internationally recognized and has become a reference for developing countries. That is because, according to her, it prioritizes the citizen and the improvement of public service delivery. Electronic Government Interoperability Standards (e-PING) were implemented in Brazil in 2004 and are now in its version 4.0. According to Loreni Foresti, the event promoted the integration of international, national and local public institutions in order to share experiences on the role of interoperability on public services improvement, and to qualify information that is provided to citizens. Promoted by the Ministry of Planning, in partnership with the United Nations Development Programme (UNDP), the Global Summit held in Rio de Janeiro brought together over 100 participants from 30 countries, including India, Ghana, Chile, Colombia, Costa Rica, Cape Verde, Bolivia, Uruguay, Serbia, Romania, Sri Lanka, Cambodia, Vietnam, Egypt, Holland, Ecuador and Bosnia. During the event, there was a technical visit to the Digital Pirai Project (www.piraidigital.com.br), which aims to disseminate digital culture inside the city. Digital Pirai involves actions for

Global Spatial Data Infrastructure Latin America and the Caribbean Newsletter

digital inclusion, new media education, and information technology management. About 31 representatives of technology areas from different countries visited the city and learned on the location and operation of the project initiatives on education and digital inclusion. Archives of presentations and reports on discussion boards are available at www.gif4dev.net/. Link: <http://www.planejamento.gov.br/noticia.asp?p=not&cod=6196&cat=94&sec=7>

The GEO Call for Proposals

Source: GEO News issue #9



GEO issued a Call For Proposals (CFP) in February 2009 inviting organizations to propose or participate in projects that apply Earth observations to decision-support activities. This effort to demonstrate the ability of GEO to build capacity for Earth observations is now reaching its critical final stage. The wider engagement of the GEO community in this effort is vital to ensuring its success. The Capacity Building Committee and the User Interface Committee are co-managing this Call together with GEO Secretariat experts. The Call seeks to promote practical applications of Earth observations for improved decision making and to highlight specific examples of how Earth observations can benefit society. It focuses on projects in four societal benefit areas –Agriculture, Energy, Health and Water– and aims to increase the capabilities of end users, particularly in developing countries. GEO received 133 concept proposals, from 44 different countries, mostly in the developing world. In response to a first round of review, 66 of the proponents developed and submitted full proposals, with two in the societal benefit area of Energy, 16 in Agriculture, 12 in Health and 36 in Water. The Committee members and the Secretariat organized panels of experts to review each of these full proposals and provide feedback to project teams. The final selections will be announced in September. The GEO Committees are now working to broker connections between project teams and resource-providing organizations. The CFP Coordination Team is seeking the support of the entire GEO community in helping to match proponents and donors. By mid September 2010, after the final results have been announced, it will be time to actively search for funding for the selected projects. The entire GEO community is invited to participate in this effort.

NLA Continues to Strive for Excellence, Jamaica

Source: <http://www.jis.gov.jm/>



Government of Jamaica

The National Land Agency (NLA), which brings together the Government's core land information functions, will during this financial year, undertake a raft of initiatives aimed at improving its services. Speaking with the JIS, Chief Executive Officer (CEO), of the NLA, Mrs. Elizabeth Stair, notes that chief among the initiatives is the implementation of new security features for its Certificate of Titles. Mrs. Stair informs that "it is going to be a new paper totally and it is going to have some security features, some will be obvious to the naked eye and some will not be," while noting that relevant agencies such as the courts and embassies will be apprised of the changes. In another initiative being undertaken by the NLA, the 30 year old map of Kingston was revamped with the new edition created, which will be publicly unveiled to the public soon. Steps were also taken by the agency to produce mini maps for the resort towns of Negril and Montego Bay. "What we really plan to do is to try and update the whole mapping basis over the next few years. We are also looking at providing some other services at the Land Titles Division to make it easier for our customers to work with us, looking at more computerization," she adds. The NLA was established under the Public Sector Modernization Programme of the Government of Jamaica. It brings together land information functions of government under one roof, and includes: Land Titles; Surveys and Mapping; Land Valuation & Estate (Crown Land) Management. This merger enables the government to build on the synergy of these combined functions and create a modern national land (spatial) information system to support sustainable development.

Global Spatial Data Infrastructure Latin America and the Caribbean Newsletter

[IBGE launches 11 GPS highly accurate location stations, Brazil](http://www.ibge.gov.br/)

Fuente: <http://www.ibge.gov.br/>



IBGE, in cooperation with the National Institute of Colonization and Agrarian Reform (in Portuguese INCRA), opened 11 new stations to the Brazilian Network for Continuous Monitoring (GNSS positioning system currently comprised by the American Global Positioning System GPS and the Russian GLONASS). The new stations are located in Barreiras (BA), Fortaleza (CE), Balsas (MA), Altamira (PA), Itaituba (PA), Colorado d'Oeste (RO), Rio Paranaíba (MG), Varginha (MG) Araçatuba (SP), Campinas (SP) and Ubatuba (SP). The GNSS Brazilian Network for Continuous Monitoring System (in Portuguese RBMC) is the most accurate frame of reference for the country (the GNSS can provide locations with precision of centimeters). It can be used both for major engineering works (construction of roads and dams, for example) and land demarcation (indigenous, quilombolas, environmental protection, etc.). In addition, these stations collect daily information allowing coordinate calculations (longitude and latitude) from various points throughout the national territory. In the case of earthquakes, like that occurred a few months ago in Chile, for example, the displacement of some points on the globe was determined by means of similar stations spread throughout South American countries. Implemented in December 1996, the GNSS Brazilian Network for Continuous Monitoring was the first to be installed in South America and now has 80 stations, with three others currently being tested -in Juína (MT), Vila Bela da Santíssima Trindade (MT) and Santarém (PA)– for future incorporation into RBMC. RBMC expansion and modernization was accelerated in 2007 when there were 24 stations. The newly installed equipment and operational facilities allow provision of new services besides collecting geodetic information that may be used by the Brazilian scientific community. The RBMC is still the direct link between the Brazilian Geodetic System (in Spanish SGB) and similar international networks. With increasing use of positioning techniques based on the Global Navigation Satellite System (GNSS), their role is increasingly important for land cover identification. Data and reports from all stations may be accessed at IBGE's webpage at www.ibge.gov.br/home/geociencias/download/tela_inicial.php?tipo=8, and also at the FTP server address: <ftp://geoftp.ibge.gov.br/RBMC/>

[OGC Forms GeoSMS Standards Working Group](http://www.opengeospatial.org/)

Source: <http://www.opengeospatial.org/>



The Open Geospatial Consortium (OGC(R) announces the formation of an Open GeoSMS Standards Working Group (SWG) (<http://www.opengeospatial.org/projects/groups/geosmsswg>). The Open GeoSMS SWG will advance the OGC Candidate Open GeoSMS Standard (http://portal.opengeospatial.org/files/?artifact_id=36261) as an OGC adopted standard. The GeoSMS candidate standard is currently an OGC "Discussion Paper". The candidate Open GeoSMS standard defines a Short Messaging Service (SMS) encoding to exchange lightweight location information between different mobile devices or applications. Currently such devices or applications are often unable to share location information with each other because of technical incompatibilities between systems used by different device and platform vendors. This causes problems for users and imposes obstacles to industry growth. The GeoSMS encoding for location is compatible with other OGC standards, such as those for sensor webs and earth imaging. It is also compatible with standards such as the OASIS Common Alerting Protocol (CAP) standard and the IETF RFC Presence Information Data Format Location Object (PIDF-LO). The OGC works with OASIS, IETF and many other standards development organizations to make geospatial information and services an integral and fluid part of the world's information infrastructure.

Global Spatial Data Infrastructure Latin America and the Caribbean Newsletter

[Spatial Data Infrastructures exchange experiences at the INSPIRE Conference 2010](#)

Source: <http://unsdihu.blogspot.com/>

Different outstanding Spatial Data Infrastructures (SDIs) introduced their best practices at the eSDI-Net+ Workshop "European SDI Best Practices in Dialogue" being part of the INSPIRE Conference 2010 in Krakow, Poland. On 22nd of June 2010 three best practice examples from twelve highly commended European SDIs presented and demonstrated the key factors of their success towards the INSPIRE implementation at the sub-national level. The aim of the workshop was to highlight outstanding SDI best practices as examples of successful local and regional SDI developments and intensify the dialogue in the GI and INSPIRE community. It attracted an international audience of about 60 participants. SDIs from very local to cross-border scale were presented at this workshop. In accordance to this year's theme of the conference "INSPIRE as a Framework for Cooperation", the workshop drew attention to promising SDI solutions in Europe and motivated the SDIs to exchange experiences and to learn from each other. Further information on the outstanding SDI best practices can be seen at http://www.esdinetplus.eu/best_practice/outstanding.html. More details about the conference are available at the INSPIRE conference website http://inspire.jrc.ec.europa.eu/events/conferences/inspire_2010/.

National Convention of Geography and the Environment 2010, Mexico

Fuente: Issai Jiménez



Convención Nacional de Geografía y Medio Ambiente 2010



The National Institute of Statistics and Geography (in Spanish INEGI) and the Government of the State of Nayarit, Mexico, organize the National Convention on Geography and the Environment 2010 that will be held on November 8-12 at Nayarit. It is a free admission event divided into two phases. During First Phase to be held on 8 and 9, technical workshops, children's workshops, and workshops for seniors and people with disabilities will take place. On the second stage during 10, 11 and 12, there will be lectures, presentations, workshops, panels and poster exhibitions. Abstract deadline is **September 9, 2010**. Contact: convencion.geografia@inegi.org.mx. Detailed information at: <http://www.inegi.org.mx/eventos/2010/CNGMA/presentacion.aspx>

GEOSS Workshop XXXVIII: Evolution of Ocean Observing Systems – Building an Infrastructure for Science

Source: SEA-GIS list



Place: Washington State Convention and Trade Center, Seattle, WA, USA

Time: September 19, Sunday, 08:30 – 18:20

This one day workshop will explore key ocean observational challenges and opportunities within the context of global monitoring consisting of initiatives in the US, Japan, Australia and Europe. After bringing the audience up to date on the Global Earth Observation System of Systems (GEOSS), the discussion will focus on answering a

series of questions associated with ocean data collection, evaluation and decision support systems. The discussion will focus on the ability to build on existing systems to develop a global coordinated information and data system for ocean monitoring to better understand the dynamics of the deep-ocean processes throughout the ocean water column (ref GEO subtask AR-09-03c, ST-09-02). The unique format and scope of the workshop serves to ensure that a broad

Global Spatial Data Infrastructure Latin America and the Caribbean Newsletter

range of data users, scientists, and engineers contribute to the discussions on Earth system models and the use of environmental data. There will be further discussion of the benefits and impacts of a community of practice in ocean observations. For more information, go to <http://www.ieee-earth.org>. For Registration, go to: <http://www.oceans10metsieeseattle.org/main.cfm/CID/35/>

[1st Conference on Spatial Statistics 2011: Mapping Global Change](http://www.spatialstatisticsconference.com/)

Source: <http://www.spatialstatisticsconference.com/>



Spatial statistics is a rapidly developing field which involves the quantitative analysis of spatial data and the statistical modeling of spatial variability and uncertainty. Applications of spatial statistics are for a broad range of environmental disciplines such as agriculture, geology, soil science, hydrology, ecology, oceanography, forestry, meteorology and climatology, but also for socio-economic disciplines such as human geography, spatial econometrics, epidemiology and spatial planning. The aim of the meeting, that will be held on March 23-25 at the University of Twente in Enschede, The Netherlands, is to present interdisciplinary research where applicability in other disciplines is a central core concept. Please submit abstracts for presentation at the symposium by **21 September** 2010. Conference Themes: Mapping global change; Spatial and spatio-temporal statistical methodology; Environmental issues; Ecological and habitat changes; Health and epidemiology; Economy and energy; Image use and analysis; and Developing countries. The language of the symposium will be English. For detailed information please log on to the Conference webpage at: <http://www.spatialstatisticsconference.com/>

Final Notes of the Directors General Forum held at the FIG Congress in Sydney

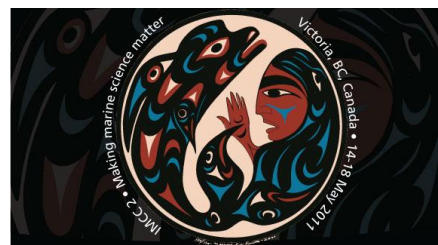
Source: Iain Greenway by way of Santiago Borrero

It is now available the [final version](#) of the notes of the Directors General Forum held at the FIG Congress in Sydney in April 2010. A draft version was reviewed by attendees and notified changes have been included. This Forum has now become a valuable opportunity for heads of national agencies from around the world to discuss common issues in an open way, and therefore please look forward to the next event, in Marrakech, Morocco during the FIG Working Week which runs from May 18 to 22, 2011.

International Marine Conservation Congress: Call for proposals

Source: Ellen Hines

The call for proposals for symposia, workshops, and focus groups is now open for 2nd International Marine Conservation Congress, which will be held on May 14-18 2011 at the Victoria Convention Centre, Victoria BC, Canada. The deadline for proposals is **31 August** 2010. You can find the proposal guidelines and link to the electronic submission page on the IMCC web site: <http://www.conbio.org/IMCC2011/>. For additional information contact the program committee at IMCCprogram@gmail.com



[\(Back to Top\)](#)

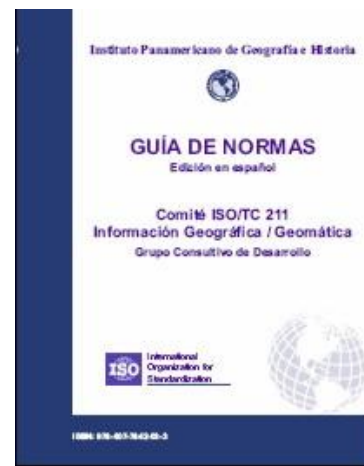
Global Spatial Data Infrastructure Latin America and the Caribbean Newsletter

Articles and Publications of the Month

Spanish edition of the ISO/TC 211 Guide on Geographic Information/Geomatics Standards

Source: <http://snitchile.blogspot.com/>

The Pan-American Institute of Geography and History (PAIGH) has published the Spanish version of "ISO TC/211 Guide " which was originally drafted in English by the ISO/TC 211 Committee, Advisory Group on Outreach of the International Organization for Standardization (ISO) with responsibility for Geographic Information and Geomatics. The document provides a summary of each of the International Standards and specifications produced by this Committee aimed at achieving interoperability in the field of GIS. The Guide summaries are slightly edited standards' excerpts or fragments. These are grouped into different categories, so that general standards are listed first and the specific standards on related issues are grouped together. The ISO/TC 211 International Committee began working in November 1994 seeking to establish reference standards in the field of digital geographic information, designed for both data transfer and the isolated GIS world, and for spatial services and data infrastructures (SDI). As a result of this work, it was produced the ISO 19100 group of standards which are summarized herein. You may download the Spanish edition of the Guide at <http://www.ipgh.org/Publicaciones/Files/Ocasionales/PO-0541.pdf>



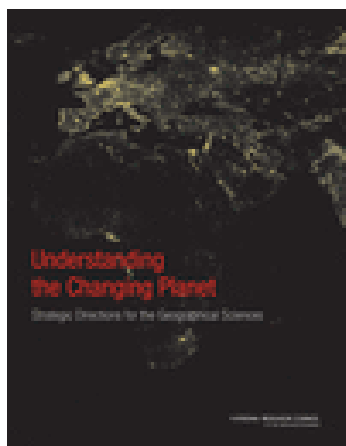
Fourth edition of SNIT magazine, Chile

Source: <http://www.snit.cl/>

With an editorial marked by the events that followed the earthquake of February 27, but with a hopeful tone for the Bicentennial year, a new issue of SNIT Journal -that already has four editions- is published. Inside this issue, the Minister of National Property, Catalina Parot, stresses the importance gained by geospatial information in recent times, understood as a fundamental supporting tool for wise decision making by authorities. This edition provides an overview of the work and progress performed by each of the Topic Areas coordinated by SNIT between 2006 and 2009. Articles are published in Spanish and English. You may read and download them [here](#).

Understand the Changing Planet: Strategic Directions for the Geographical Sciences

Source: Patricia Solis by way of Santiago Borrero



Now available from National Academies Press. From the oceans to continental heartlands, human activities have altered the physical characteristics of Earth's surface. With Earth's population projected to peak at 8 to 12 billion people by 2050 and the additional stress of climate change, it is more important than ever to understand how and where these changes are happening. Innovation in the geographical sciences has the potential to advance knowledge of place-based environmental change, sustainability, and the impacts of a rapidly changing economy and society. *Understanding the Changing Planet* outlines eleven strategic directions to focus research and leverage new technologies to harness the potential that the geographical sciences offer. The Association of American Geographers' (AAG) members receive a special 25% discount off the list price of *Understanding the Changing Planet: Strategic Directions for the Geographical Sciences*. Free downloads of the Executive Summary and Report Brief are also available at: http://www.aag.org/cs/aag_bookstore/other_publications/understanding_the_changing_planet

Global Spatial Data Infrastructure Latin America and the Caribbean Newsletter

Cookbook 1 - How to serve a Scottish SDI and INSPIRE conformant Web Map Service

Source: Kate Lance

One Scotland: One Geography: One Information Network: Creating Scotland's Spatial Data Infrastructure: Cookbook 1 - How to serve a Scottish SDI and INSPIRE conformant Web Map Service? (May 2010)

This Cookbook is the first of a series of guidance manuals/toolkits which will define the appropriate standards for delivery of spatial data as web services, and provide guidance on the technology options that are currently available to deliver these services. These guidance manuals are being developed by Scottish Government in partnership with the British Geological Survey. Contents: (1) Introduction; (2) Initial web map service contributions to the Scottish SDI; (3) What other INSPIRE data specification service conformant specific WMS issues and advice are likely to appear over the next year? Annex 1: How to serve a Scottish SDI and INSPIRE conformant Web map service?

More information at: <http://www.scotland.gov.uk/Publications/2010/05/06161701/0> and <http://www.scotland.gov.uk/Resource/Doc/311518/0098305.pdf>; (3.4 MB)

Key Elements of Dutch SDI

Source: GEOconnexion International Magazine July/August 2010

Excerpts of the article: INSPIRE and GIDEON

To cope with the increasing amount of various types of geo-information, the European Commission initiated a project known as INSPIRE (INfrastructure for SPatial InfoRmation in Europe) with the aim to harmonize the acquisition and dissemination of geo-information. The resulting set of guidelines and regulations have entered into force as the INSPIRE Directive in May 2007. Although already much work has been done by the European Commission, the actual implementation of the guidelines by INSPIRE remains a serious effort. Crossing the Dutch border, GIDEON takes over the important role of implementing INSPIRE in the Netherlands. GIDEON describes the vision and long-term strategy of the realization of an NSDI. This strategy has been developed and is supported by a significant number of organizations, including ministries, universities, the Dutch cadastre, Stichting Geonovum, and several other (governmental) agencies.



KEY ELEMENTS OF DUTCH SDI

Plans, pilots, and projects: To accelerate the development of an NSDI, several projects have been initiated in recent years. I will explain two of them here. The first project concerns the development of a national geoportal, known as the 'Nationaal Geo Register' (NGR). The goal of this project is to aid the discovery and use of geo-information for professional geo-information users. The geoportal was launched in 2009 and now contains datasets and services from several different Dutch suppliers and organizations. The NGR is built on open source technology to make it independent of any party. A new project that started in 2009 is PDOK. This acronym stands for 'Publieke Dienstverlening Op de Kaart' which can be translated as 'public services put on a map'. The aim is to make geo-information easily accessible for all users (including citizens) through a solid infrastructure. A number of use cases will be demonstrated on spatial planning and on the involvement of society in planning activities.

Future developments: In this article I explained that the way we deal with standards, metadata, and the dissemination of geo-information plays a key role in the development of the Dutch NSDI. Many enthusiastic people of a number of organizations exchange ideas and initiate projects to make the Dutch NSDI work in reality. However, there is always room for improvement as current agreements and guidelines still leave too much room for different interpretations and implementations. [Article by Sabine Put. The complete article may be found at: http://www.geoconnexion.com/uploads/dutch-sdi_intv9i7.pdf]

Global Spatial Data Infrastructure Latin America and the Caribbean Newsletter

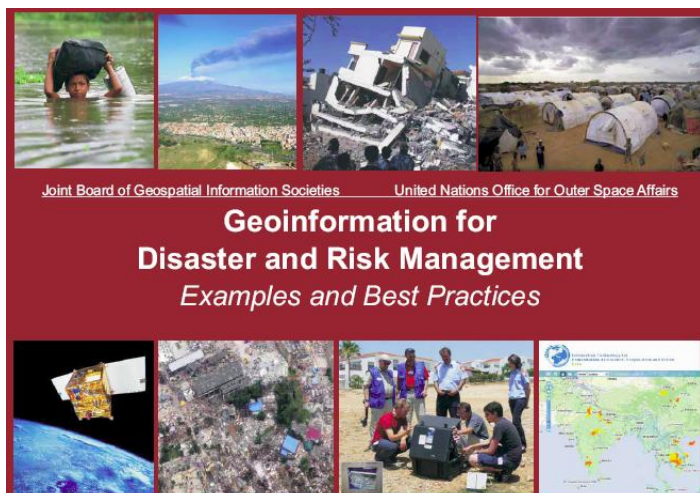
SCI Impact Factor for the International Journal of Digital Earth (IJDE)

Source: Editorial Office, International Journal of Digital Earth by way of Santiago Borrero

On the newly released SCI Impact Factor for the journals assessed by the Thomson Reuters of June 18, the International Journal of Digital Earth (IJDE) has got its first impact factor (0.864). IJDE is the official Journal of the International Society for Digital Earth and is published by Taylor & Francis of UK. It is the first professional and international peer-review journal in the digital earth research field around the world. It is a quarterly journal. The inaugural issue has been released in March of 2008. After 18 month's publication it was accepted for coverage in Science Citation Index Expanded, and now it got the first impact factor, showing that the journal has become an important publication in the geospatial information science field. We welcome interesting, challenging and innovative contributions presenting high quality and international research on Digital Earth. IJDE will publish work that deal with concepts on the cutting edge Digital Earth technologies related research and development, as well as papers that link science with management, planning and policy. In addition, papers dealing with Digital Earth technology aspects and specific applications are most welcome. For submitting your original research paper or review paper, please visit <http://mc.manuscriptcentral.com/ijde>

New booklet published by JBGIS and UNOOSA

Source: UN-SPIDER June 2010 Updates



A new booklet published on July 2nd by the Joint Board of Geospatial Information Societies (JBGIS) and the United Nations Office for Outer Space Affairs (UNOOSA) outlines the potential uses of geoinformation technologies to reduce the impact of natural or manmade disasters and risks. "Geoinformation for Disaster and Risk Management - Best Practices and Examples" brings together concise scientific contributions from experts around the world and creates a decision support forum based on their knowledge. The articles in the booklet cover natural disasters like earthquake, flood, volcano outbreak, tsunami, landslide, dust storm and wildfire, as well as societal issues like health care, refugee camps, urban sprawl and infrastructure security. Case related regional studies are complemented by presentations of global information systems. You can download a PDF version of this booklet at [UNSPIDER News](#).

[\(Back to Top\)](#)

Geospatial Research and Applications

[National Library of Jamaica Gone Digital](#)

Source: <http://www.jis.gov.jm/>

With the click of a mouse in the comfort of their homes, Jamaicans can now access historical materials, including maps, photographs and plans, which are stored on the website of the National Library of Jamaica (NLJ). In an era when more and more information is being sought on the Internet, the NLJ has moved to facilitate the process, by digitizing its collections as well as downloading and storing Jamaican publications on its website. This process, known as web-archiving, is one of the latest initiatives of the NLJ. Mrs. Hudson says the Library is also collecting selective publications from websites belonging to some ministries and government agencies. Another activity of the library is converting historical materials to a digital format, so that persons can access them via the website. Mrs. Hudson says

SDI-LAC Newsletter

13

Vol. 7, No.8



Global Spatial Data Infrastructure Latin America and the Caribbean Newsletter

that some of the materials that have been converted date back to the 17th Century and beyond. Among the oldest publications, she points out, is the first published map of Jamaica, printed after Columbus had discovered the country. Visually impaired persons have not been shut out from the Library, as they have access to digital talking books for the blind. The Executive Director explains that the initiative, which is in the implementation stage, will allow the visually impaired, especially persons at the Jamaica Society for the Blind and those at the University of the West Indies, to have access to materials that were once only accessible to those with sight.

[Violent storm across the Amazon forest killed half a billion trees](#)

Source: <http://www.agu.org/>



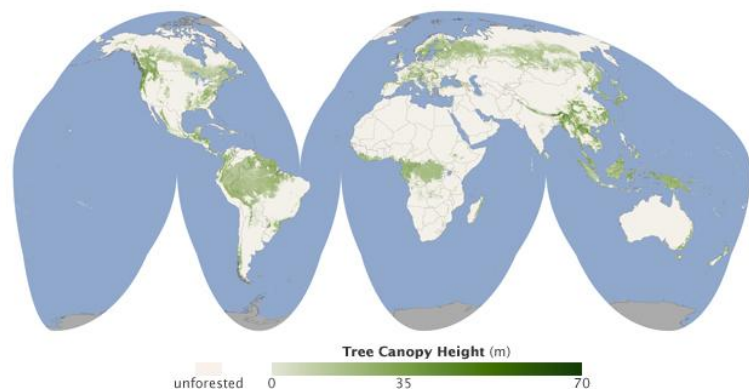
A single, huge, violent storm that swept across the whole Amazon forest in 2005 killed half a billion trees, a new study shows. While storms have long been recognized as a cause of Amazon tree loss, this study is the first to produce an actual body count. And, the losses are much greater than previously suspected, the study's authors say. This suggests that storms may play a larger role in the dynamics of Amazon forests than previously recognized, they add. Previous research had attributed a peak in tree mortality in 2005 solely to a severe drought that affected parts of the forest. The new study says that a single squall line (a long line of severe thunderstorms, the kind associated with lightning and heavy rainfall) had an important role in the tree demise. This type of storm might become more frequent in the future in the Amazon due to climate change, killing a higher number of trees and releasing more carbon to the atmosphere. Tropical thunderstorms have long been suspected to wreak havoc in the Amazon, but this is the first time researchers have calculated how many trees a single thunderstorm can kill, says Jeffrey Chambers, a forest ecologist at Tulane University, in New Orleans, and one of the authors of the paper, which has been accepted for publication in *Geophysical Research Letters*, a journal of the American Geophysical Union (AGU). The researchers used a combination of Landsat satellite images, field-measured tree mortality, and modeling to determine the number of trees killed by the storm.

By linking satellite data to field observations, the researchers were able to take into account smaller tree blow downs (less than 10 trees) that otherwise cannot be detected through satellite images. For more information, see: [American Geophysical Union release No. 10-17](#)

[First-of-its-Kind Map Depicts Global Forest Heights](#)

Source: <http://www.nasa.gov/>

Using NASA satellite data, scientists have produced a first-of-its kind map that details the height of the world's forests. Although there are other local- and regional-scale forest canopy maps, the new map is the first that spans the entire globe based on one uniform method. The work -based on data collected by NASA's ICESat, Terra, and Aqua satellites- should help scientists build an inventory of how much carbon the world's forests store and how fast that carbon cycles through ecosystems and back into the atmosphere. Michael Lefsky of the Colorado State University described his results in the journal *Geophysical Research Letters*. The new map shows the world's tallest forests

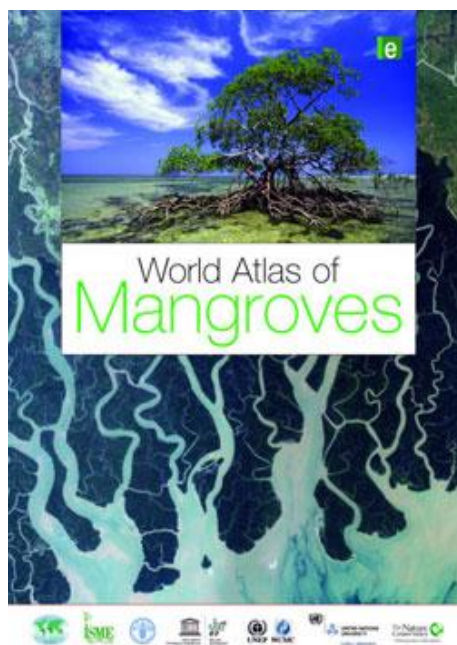


Global Spatial Data Infrastructure Latin America and the Caribbean Newsletter

clustered in the Pacific Northwest of North America and portions of Southeast Asia, while shorter forests are found in broad swaths across northern Canada and Eurasia. The map depicts average height over 5 square kilometers (1.9 square miles), not the maximum heights that any one tree or small patch of trees might attain. Scientific interest in the new map goes far beyond curiosities about tree height. The map has implications for an ongoing effort to estimate the amount of carbon tied up in Earth's forests and for explaining what sops up 2 billion tons of "missing" carbon each year. More immediately, said University of Maryland remote sensing expert Ralph Dubayah, tree canopy heights can be plugged into models that predict the spread and behavior of fires, as well as ecological models that help biologists understand the suitability of species to specific forests. Lefsky used data from a laser technology called LIDAR that's capable of capturing vertical slices of surface features. It measures forest canopy height by shooting pulses of light at the surface and observing how much longer it takes for light to bounce back from the ground surface than from the top of the canopy. Since LIDAR can penetrate the top layer of forest canopy, it provides a fully-textured snapshot of the vertical structure of a forest - something that no other scientific instrument can offer. To create his global map forest height map, Lefsky combined the LIDAR data with information from the Moderate Resolution Imaging Spectroradiometer (MODIS), a satellite instrument aboard both the Terra and Aqua satellites that senses a much broader swath of Earth's surface, even though it doesn't provide the vertical profile. "This is a really just a first draft, and it will certainly be refined in the future," said Lefsky. The next generation LIDAR measurements of forests and biomass, which will improve the resolution of the map considerably, could come from NASA's Deformation, Ecosystem Structure and Dynamics of Ice (DESDynI <http://desdyni.jpl.nasa.gov/>) satellite, proposed for the latter part of this decade.

[Atlas of Mangroves highlights global loss of tidal forests](http://blogs.nationalgeographic.com/)

Source: <http://blogs.nationalgeographic.com/>



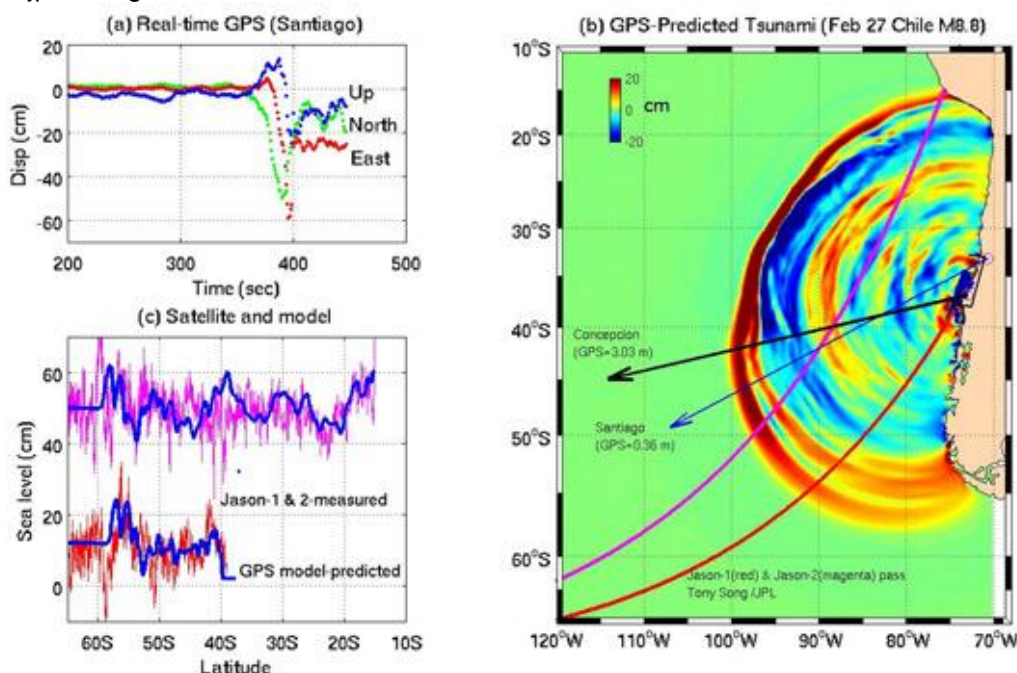
Mangroves are the trees and shrubs that flourish at the saline interface between ocean and land. They nurture a multitude of species of land, sea, and air and also provide humans with numerous resources, ranging from coastal shock absorbers from tsunamis and hurricanes to natural hatcheries for replenishment of fisheries. Mostly because of coastal development, Earth has already lost perhaps as much as a quarter of its mangrove forests, and many species of mangrove plants are edging toward extinction. The remaining mangrove zones add up worldwide to no more than the area of the U.S. state of Illinois--and they shrink every year under the onslaught of development, pollution, and climate change. The World Atlas of Mangroves published on July is the most comprehensive assessment of mangroves yet. It reveals "drastic loss to global economy and livelihoods," the publishers said in a news release about the book. "The first global assessment of mangroves in over a decade reveals that rare and critically important mangrove forests continue to be lost at a rate three to four times higher than land-based global forests, despite positive restoration efforts by some countries," the atlas publishers say in a statement. More than 100 top international mangrove researchers and organizations provided data, reviews and other input. Spanish and French versions of the Atlas are being prepared. "About one fifth of all mangroves are thought to have been lost since 1980. The new atlas also underscores positive trends, the publishers said. "Restoration efforts now cover some 400,000 hectares, as foresighted countries make the link between these

coastal forests and economically-important services from flood defenses and fish nurseries to carbon storage to combat climate change." This atlas brings our attention onto mangroves and puts them up front and central, plotting where they are, describing where they have been lost, and underlining the immense costs those losses have had for people as well as nature".

Global Spatial Data Infrastructure Latin America and the Caribbean Newsletter

[NASA demonstrates tsunami prediction system](#)

Source: <http://www.jpl.nasa.gov/>



A NASA-led research team has successfully demonstrated for the first time elements of a prototype tsunami prediction system that quickly and accurately assesses large earthquakes and estimates the size of resulting tsunamis. After the magnitude 8.8 Chilean earthquake on February 27, a team led by Y. Tony Song of NASA's Jet Propulsion Laboratory (JPL) in Pasadena, California, used real-time data from the agency's Global Differential GPS (GDGPS) network to successfully predict the size of the resulting tsunami. The network, managed by JPL, combines global and regional real-time data from hundreds of GPS sites and estimates their positions every second. It can detect ground motions as small as a few centimeters. "This successful test demonstrates that coastal GPS systems can effectively be used to predict the size of tsunamis," said Song. "This could allow responsible agencies to issue better warnings that can save lives and reduce false alarms that can unnecessarily disturb the lives of coastal residents." For information about NASA and agency programs, visit: <http://www.nasa.gov>.

[\(Back to Top\)](#)

GIS Tools, Software, Data

[INPE opens new forest monitoring center in the Amazon](#)

Source: GEO News issue #9

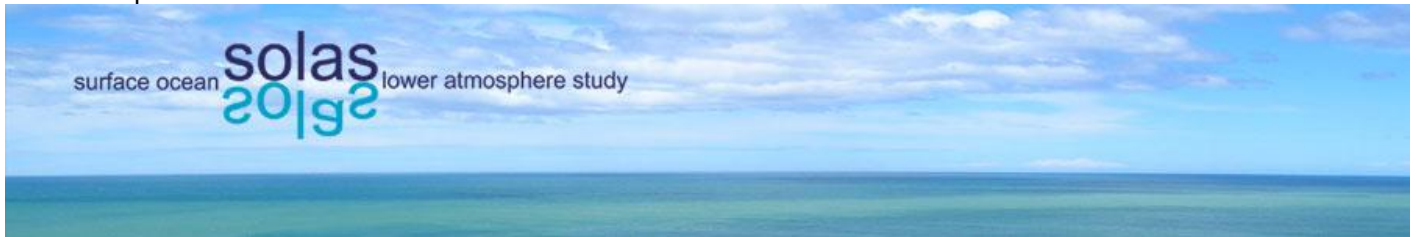
Brazil's National Institute for Space Research (in Portuguese INPE) officially opened its new regional center last July in Belém, in the Amazon region. The new facility will carry out research and development activities on the monitoring of tropical forests and aims to become a world reference in this area. With the support of organizations such as the Food and Agriculture Organization of the United Nations (FAO), the Amazon Cooperation Treaty Organization (ACTO) and the Japan International Cooperation Agency (JICO), INPE's Amazon center will also offer training opportunities specially tailored for students and specialists from developing countries in Africa, Asia and South America. Training activities and courses will be delivered in English, Spanish and French with the help of the TerraAmazon software platform, which is used by INPE to assess deforestation and forest degradation in the Amazon. Participants will become familiar with initiatives like PRODES (Deforestation Assessment in the Brazilian Legal Amazonia) and systems like TerraView and TerraAmazon, which have made Brazil well known as a scientific and technological leader in open

Global Spatial Data Infrastructure Latin America and the Caribbean Newsletter

source solutions for Remote Sensing and Geoprocessing. During the opening ceremony for the new center, a partnership was announced joining INPE, the Gabonese Agency of Space Study and Observation (AGEOS) and France's Institut de Recherche pour le Développement (IRD) for the construction of a satellite ground station in Libreville, Gabon. Gabon's future ground station will permit the direct reception of images from the China Brazil Earth Resources Satellite (CBERS) programme and from other satellites in Central Africa, home of most of the remaining tropical forests in Africa. All these activities contribute to the GEO projects "CBERS/GEO Capacity Building Network", "Open Source Software" and "CBERS", which are subtasks CB-09-02d, CB-09-05a and b, respectively, under the Capacity Building overarching Tasks.

[Map-based overview of research projects on ocean acidification](#)

Source: <http://www.imber.info/>



The [SOLAS-IMBER Ocean Acidification working group](#) is developing a web-based, interactive database of ocean acidification research. The goal of the project is to provide a map-based overview of ongoing and past research projects on ocean acidification, with web links for research groups to promote information and coordination of activities. The release of the web site is planned for mid to late summer, 2010 but researchers can contribute OA locations for inclusion in the site and suggestions for web site features now. [Click here](#) to find out more.

OGC and OSGeo collaborate on documentation

OGC Press Announcement :eSource

The Open Geospatial Consortium (OGC®) and the Open Source Geospatial Foundation (OSGeo) will develop conforming documentation for key OGC standards and geospatial open source application descriptions. Both sets of documentation will be available online and on the OSGeo-Live DVD, to be released at the international conference for Free and Open Source Software, FOSS4G, in September 2010 in Barcelona, Spain (<http://2010.foss4g.org>). "We are happy to work with OSGeo to meet the needs of open source developers," explained Steven Ramage, Executive Director, Marketing and Communications, OGC, "because wider use of OGC standards increases interoperability, innovation and market growth, and this benefits developers and users of both open source and proprietary software." According to Cameron Shorter, coordinator of the OSGeo-Live project, "OGC standards underpin our geospatial Open Source applications, and hence this support from the OGC will greatly enhance the OpenSource documentation being developed."

About OSGeo-Live: OSGeo-Live is a DVD, USB drive and Virtual Machine based upon Ubuntu Linux that is pre-configured with a wide variety of robust, open source, geospatial software. The applications can be trialed without installing anything on your computer, simply by booting the computer from the DVD or USB drive. OSGeo Live is handed out at conferences around the world, and is regularly used by students in geospatial workshops and tutorials.

About OSGeo: The Open Source Geospatial Foundation, or OSGeo (<http://www.osgeo.org/>), is a not-for-profit organization whose mission is to support and promote the collaborative development of open geospatial technologies and data.

About the Open Geospatial Consortium (OGC®): The OGC® is an international consortium of more than 395 companies, government agencies, research organizations, and universities participating in a consensus process to develop publicly available geospatial standards. OGC Standards empower technology developers to make geospatial information and services accessible and useful with any application that needs to be geospatially enabled. Visit the OGC website at <http://www.opengeospatial.org/contact>.

[\(Back to Top\)](#)

Global Spatial Data Infrastructure Latin America and the Caribbean Newsletter

Training Opportunities

International Congress on Disaster and Territorial Ordering in the Americas

Source: Santiago Borrero



Congreso Internacional "Desastres y Ordenamiento Territorial en las Américas"

The International Congress will be held in Lima, Peru, on November 8-9, 2010, prior to the 42nd Meeting of the Directing Council of PAIGH. It is aimed at bringing together specialists, scientists and/or professionals on Mapping, Geophysics, Geography, History and related disciplines, policy makers, public and private officials, to share knowledge, experience and/or know how in forecasting, prevention, mitigation and disaster relief prompted by natural or induced causes. It also seeks calling organizations and national institutions to encouraging international support for reducing potential disasters. The International Congress hopes to contribute to an anticipation/prevention culture, and to better disaster relief, by expanding knowledge on historical disasters, natural or induced hazards, vulnerabilities, and territorial ordering best practices. It also hopes to contribute towards constructing an American Society that is resilient to disasters. Official presentation languages are Spanish and English. General topics include: American Territorial Occupation Processes, Territorial Ordering (Land Use/Spatial Planning) and Development, Climate Change and Adaptability, and Welfare and Disaster Relief. The deadline for submitting abstracts by mail is **August 31, 2010**. For detailed information please log on to <http://www.ipgh.org/42-Consejo-Directivo/Congreso-Internacional/Trp-DOTA.pdf> Participant registration forms may be found at <http://www.ipgh.org/42-Consejo-Directivo/Congreso-Internacional/Registro.htm>

Certificate Course on Geographic Information Quality Assessment (II)

Source: Francisco Javier by way of Santiago Borrero



For academic year 2010/2011 it has been organized the 3rd edition of the Diploma Course on Geographic Information Quality Assessment. For detailed information please log on to <http://www.cartocalidad.com/es.html>. The course content and structure are designed at the request of many Hispanic American community members, and will be conducted on a virtual platform supported by the University of Jaén virtual campus.

OGC Announces Webinar on 2010 Data Fusion Testbed

Source: OGC Press Announcement

The Open Geospatial Consortium (OGC®) recently concluded the OGC Web Services, Phase 7 (OWS-7) Testbed initiative. Interoperability architectures, enhancements to existing OGC standards, and candidate standards developed in the testbed for sensors, video change detection, database synchronization, information cataloguing, web processing services, event architecture and aviation will be presented in a 2 hour webinar. The webinar will start at 10:00 pm US EDT on August 19, 2010 for the Asia/Australia time zones, and at 10:00 am US EDT on September 8, 2010 for the

Global Spatial Data Infrastructure Latin America and the Caribbean Newsletter

North America/Europe time zones. For information and registration, see <http://www.opengeospatial.org/event/ows7webinars>.

[Online Geographic Information Systems Certificate at UWF](#)

Source: <http://uwf.edu/>

Completely online, this program of the University of West Florida (UWF) GeoData Center offers national and international students access to software and complete assignments through an innovative virtual machine. Out of state tuition is waived and there are no pre-requisites required to begin. Upon completion of the program students receive a University of West Florida Certificate in Geographic Information Science. Application deadline for the 2011 cohort beginning January 5th, 2011 is **November 20th**, 2010. This is a cohort-based program and courses are offered only once a year. Contact Amber Bloechle at gis@uwf.edu. Detailed information may be found at: <http://uwf.edu/gis/gisonline/enroll/>



SOLAS 5th Summer school 2011 on ocean-atmosphere interactions

Source: Kenneth Young

The SOLAS Summer School is a biennial, international event that brings together over 70 students and 15 world-leading international scientists, in a variety of fields, for a combination of lectures and practical workshops. It aims to teach the skills and knowledge of the many disciplines needed to understand the nature of ocean-atmosphere interactions. It allows doctoral students and early-career researchers to see how their work fits into the broad canvas of SOLAS, and global change research more generally. SOLAS is currently planning for the 5th edition of the SOLAS summer school in Corsica, France, 30 Aug-10 Sept 2011 <http://www.solas-int.org/summerschool/>. Contact: Dr. Emilie BREVIERE, SOLAS International Project Office, Chemische Ozeanographie, FB Marine Biogeochemie, Leibniz-Institut für Meereswissenschaften (IFM-GEOMAR), Duesternbrooker Weg 20, 24105 Kiel, Germany, ebreviere@ifm-geomar.de Phone: +49 431 600 4153 www.solas-int.org

[\(Back to Top\)](#)

Funding Opportunities, Awards, Support

Course on Spatial Data Infrastructures (SDI) of the AECI

Source: Antonio F. Rodriguez by way of IDEE Blog



The SDI course for students of Latin American countries is organized every year by the Spanish Agency for International Development Cooperation (in Spanish AECI), in collaboration with the National Geographic Institute (in Spanish IGN) and the Polytechnic University of Madrid (in Spanish UPM) of Spain. It will be held in November, specifically on November 2-26 inclusive, in Madrid, at headquarters of the Polytechnic University of Madrid. Scholarships are available for selected students to cover air travel to a maximum amount, accommodation and meals. The application period ends on **August 12**. This will be officially published soon. If you are interested, please inquire more details at the Technical Office of AECID in your country. Access more detailed information [here](#). Course Coordinator: Antonio F. Rodriguez afrodriguez@fomento.es

[\(Back to Top\)](#)

Global Spatial Data Infrastructure Latin America and the Caribbean Newsletter

Employment Opportunities

[GIS Development Assistant / Analyst, Grand Cayman, Cayman Islands](#)

Source: <http://www.gjc.org/>

Deadline for Receipt of Applications: **6 August** 2010. E-mail delivery is acceptable and encouraged. The Lands & Survey Department of the Cayman Islands Government has a vacancy for a GIS Development Assistant / Analyst in the GIS (Geographical Information Systems) team. The department is the primary repository and management agency for the Cayman Islands National Geospatial Data Infrastructure initiative. In support of this, the GIS team is tasked with the deployment of spatially aware solutions to its users plus comprehensive database and mapping support to the department, all areas of government, and the private sector. In addition to GIS, the department is responsible for delivering services and managing databases connected with Land Registry, Land Valuation & Facilities Management, and Land Survey. Applications are invited from candidates with a strong GIS skill set that emphasizes the ability to work effectively within a team of GIS specialists in a production-oriented environment. Central to the role is the ability to support and assist in the production of software solutions that provide tools to perform query, analysis and presentation of information, stored within a Geographical Information System (GIS) accessible over the government network. Additionally, tasks would include (but not necessarily be limited to) providing assistance in: implementation of new alternatives for service delivery, implementation of automated procedures, the provision of web development support and be responsible for website maintenance, take a proactive role in the support of all desktop systems, peripherals and supplies, and to liaise with the Computer Services department as necessary. The contract period is 2 years, renewable pending satisfactory performance review. For application forms, job descriptions and further information please visit our website at www.caymanlandinfo.ky

CAYMAN LAND INFO

Announcement of 10 positions in Vienna (Austria) at the new 'Wittgenstein Centre for Demography and Global Human Capital'

Source: Kenneth Young

Deadline for the first round of recruiting: **25 August** 2010. Applications are invited for up to 10 new appointments (pre-doc, post-doc to senior scientist) as part of launching the new "Wittgenstein Centre for Demography and Global Human Capital" which is being made possible by the substantial research funding associated with the Wittgenstein Prize (the highest Austrian science prize - also called the "Austro Nobel") which was recently won by Wolfgang Lutz as the first social scientist in the history of this award. The new centre will rest on three pillars (the Vienna Institute of Demography, the World Population Program of IIASA and the WU - Vienna University of Economics) and aims at merging the existing strengths in the Vienna area in the fields of demography, human capital formation and analysis of the returns to education in order to establish a globally leading centre in this field. The main goal of the Centre is to improve the analytical toolbox and the empirical database for our understanding of the role of human capital (people and their changing structure by age, gender, place of residence, level of education, health status and cognitive skills) *vis a vis* financial and natural capital in our strive for sustainable development. The focus of the new Centre is global and the working language is English. Anybody with academic credentials and/or serious aspirations in this field is encouraged to apply. Appointments will be made through one of the three 'pillar' institutions (doctoral students will receive their degree from the WU-Vienna). The deadline for a first round of recruiting is **25 August** 2010. First interviews will be held during the European Population Conference (1-3 September in Vienna). To apply, please send your CV, personal statement as well as names and contact details of two referees to Heike Barakat (heike.barakat@oeaw.ac.at)

[\(Back to Top\)](#)

Global Spatial Data Infrastructure Latin America and the Caribbean Newsletter

Other

[Centre for Spatial Law and Policy starts operations](#)

Source: Arturo Brun-Martinez

THE CENTRE FOR SPATIAL LAW AND POLICY

The Centre for Spatial Law and Policy, a non-profit organization focusing on the legal and policy issues associated with the collection, use and distribution of spatial and location data, announced the beginning of its operations. The Centre promotes the need for a consistent legal and policy framework to address the issues that arise from the growing use of spatial technology. "Legal and policy issues have a substantial impact on the collection and distribution of spatial data around the globe," said Kevin Pomfret, the Centre's executive director. "The impact of laws, policies and regulations will undoubtedly grow as the technology matures and the number of applications using spatial data increases." About the Centre for Spatial Law and Policy: Is a membership-based, non-profit organization working to create a consistent and coherent legal and policy framework with regards to spatial data. The Centre's mission is to help further the development of this framework through education on both the technology and the issues as well as promotion of dialogue between interested parties. Founding members of the new Centre include Google (NASDAQ:GOOG), Digital Globe (NYSE: DGI), DMTI Spatial Inc., GeoEye (NASDAQ: GEOY), ESRI, Lockheed Martin, Rolta International, and PCI Geomatics. For more information, visit the Centre's Web site (<http://www.spatiallaw.com>)

[Launching in 2010: IISD-RS' Latin America and Caribbean Regional Coverage \(LARC\)](#)

Source: <http://www.iisd.ca/>



Latin America and Caribbean (LAC) nations have spent many years evolving different mechanisms to coordinate their policy work on sustainable development issues and, where possible and appropriate, adopt a common position. However, these mechanisms and positions are often not widely known or well understood outside the region. In some cases, they are not even well understood within the region itself. To date, any coverage of LAC activities outside the region has tended to provide more insights into northern media biases than in accurately conveying LAC sustainable development concerns, priorities, goals and achievements. The International Institute for Sustainable Development (IISD) - Reporting Services Division (IISD RS), in partnership with the United Nations Economic Commission for Latin America and the Caribbean (ECLAC), is launching a Latin America and Caribbean Regional Coverage (LARC) Programme to improve the transparency of the region's policy discussions on sustainable development and raise its profile. Building on the success of the IISD's Earth Negotiations Bulletin (ENB) publication in covering international environment and sustainable development meetings in real-time, the LARC Programme will replicate that success at the regional level. For more information on this initiative, e-mail IISD-RS Latin America and Caribbean Regional Manager Keith Ripley (keith@iisd.org) or log on to the webpage: <http://www.iisd.ca/larc/>

UNEP Report on Latin America and the Caribbean addresses environmental degradation

Source: Kate Lance

Increasing water shortages, rapid urbanization, a rise in irrigated agriculture, the degradation of marine and coastal areas and loss of forests are just some of the environmental challenges that are highlighted in the recently released report. GEO LAC 3 is an assessment of the environmental situation of the region, based on information available and reliable data, it acts as a vehicle to promote interaction between science processes and the various phases of policy

SDI-LAC Newsletter

Vol. 7, No.8

Global Spatial Data Infrastructure Latin America and the Caribbean Newsletter

and decision making. The study is a contribution of the UNEP to promote improvements in human wellbeing, and to add to the debate around the concept of environmental sustainability in a changing and evolving world, which today faces important challenges for its present and future development and wellbeing. The third report on the state of the environment in Latin America and the Caribbean is structured in five chapters. The first describes the main driving forces and pressures that cause environmental change that affects Latin America and the Caribbean. The second analyzes the situation of the state of the environment. The third evaluates the relationships and associations between environmental changes and human wellbeing. The fourth chapter presents four socioeconomic and environmental scenarios that can facilitate decision-makers' adoption of positive actions in terms of mitigation and adaptation in the face of environmental challenges. The last chapter describes the tendencies that have characterized environmental policy in the region and the challenges that must be met to assure their contribution to a paradigm shift toward development that favors economic growth, the conservation of natural and cultural heritage, and the sustainable use of natural resources. More information at [http://www.pnuma.org/geo/geoalc3/ing/Summary%20GEO%20LAC\(web\)\(2\).pdf](http://www.pnuma.org/geo/geoalc3/ing/Summary%20GEO%20LAC(web)(2).pdf) and <http://www.pnuma.org/geo/geoalc3/ing/index.php>

[\(Back to Top\)](#)

Americas: Conferences, SDI Events

[Year 2010](#) January February March April May June July [August](#) [September](#) [October](#) [November](#) [December](#)
[Year 2011](#) [January](#) [February](#) [March](#) [April](#) [May](#) [June](#) July August September October [November](#) [December](#)

AUGUST 2010		
2-6	Orange County CA, USA	Accela User Conference 2010
3-6	Buenos Aires, Argentina	Scientific Committee on Antarctic Research (SCAR) Open Science Conference (OSC)
3-6	Arequipa, Peru	Applied Geoinformatics for Society and Environment (AGSE)
3-7	Toledo OH, USA	Local Food Systems in Old Industrial Regions: Challenges and Opportunities (IGU Commission on the Dynamics of Economic Spaces)
4-6	Curitiba, Paraná, Brazil	PPLA 2010 - Policy and Planning Workshop
4-7 *NEW*	Curitiba, Paraná, Brazil	Paranaense Symposium of Graduate Studies and Research in Geography (SimpGEO V)
5-6	Santa Fe de la Veracruz, Argentina	V Working Days on Spatial Data Infrastructure of the Argentinean Republic (V IDERA)
8-11	Maringá PR, Brazil	7th Brazilian Symposium on Geotechnical and Geoenvironmental Mapping (7 SBCGG)
8-12	Foz do Iguaçu, Brazil	2010 The Meeting of the Americas
8-13	Foz do Iguaçu, Brazil	American Geophysical Union (AGU) Joint Assembly
12-15 *NEW*	Manaus AM, Brazil	FEITRANS AMAZON 2010 – Multimodal Transport, Risk Management and Tracking Amazon fair
13-19	Foz do Iguaçu, Brazil	Managing Waveform Data and Related Metadata for Seismic Networks
15-18	Boston MA, USA	2010 APWA International Public Works Congress & Exposition
16-18	Charlotte NC, USA	2010 URISA/NENA Addressing Conference
16-20	Fortaleza, Brazil	2nd International Conference on Climate, Sustainability and Development in Semi-arid Regions (ICID 2010)
23-27	SJ Campos-SP, Brazil	1st Interdisciplinary Conference on Computational Science (CCIS 2010)
23-25	Indianapolis IN, USA	FEMA - 4th Annual HAZUS Conference
25-28 *NEW*	Porto Nacional-TO, Brazil	XI Academic Week of Geography

Global Spatial Data Infrastructure Latin America and the Caribbean Newsletter

25-27	Buenos Aires, Argentina	VIII Biennial Symposium on Spatial Transformations Contact: Marta Panaia coloquioaugm8@hotmail.com
26	The Woodlands TX, USA	GeoGathering 2010
26-29	Rio de Janeiro RJ, Brazil	International Seminar - Metropolis, Inequalities and Democratic Planning
Aug.29-Sep.1	São Carlos SP, Brazil	Ibero-American Symposium on City and Culture: New Urban Spatialities and Territorialities (SILACC 2010)
Aug.30-Sep.2	Las Vegas NV, USA	Intergraph 2010
Aug.31-Sep.1 *NEW*	São Paulo SP, Brazil	First ESRI User Meeting in Brazil - Brazil 2010 ESRI U.S.

SEPTEMBER 2010

1-3	Río Gallegos, Santa Cruz, Argentina	IV Regional Working Days on Geographical Information and Land Management (IVJIGOT)
6-10 *NEW*	Bogota, Colombia	International Seminar on Biodiversity, Environment and Geo-sciences (Co-sponsored by FIG)
6-11 *NEW*	Bogota, Colombia	Cadastral Week
8-10 *NEW*	Bogota, Colombia	7th National SELPER Seminar and 2nd ICG International Seminar
9-10	Philadelphia PA, USA	MAPublisher Training
12-14	Washington DC, USA	IMTA (AMERICAS) Conference & Trade Show 2010
12-16	Vancouver BC, Canada	15th International Union of Air Pollution Prevention and Environmental Protection Association's World Clean Air Congress: Achieving Environmental Sustainability in a Resource Hungry World
12-16	Minneapolis MN, USA	National States Geographic Information Council (NSGIC) Annual Conference
13-16	Santa Maria RS, Brazil	3rd Geomatics Week - The Geo-environment in which we live: State of the art and perspectives
14-17	Loveland CO, USA	GIS in the Rockies 2010
15-17	Tocantins, Brazil	X Geographic Meeting of Tocantins
15-17	Columbus OH, USA	2010 Ohio GIS Conference
16-17	Edmonton AB, Canada	ESRI Regional User Conference
16-18	San José, Costa Rica	11th International Congress on Geomatics: Geodesy and Topography in Real Time
19 *NEW*	Seattle WA, USA	GEOSS Workshop XXXVIII: Evolution of Ocean Observing Systems – Building an Infrastructure for Science
19 *NEW*	Seattle WA, USA	Oceans 2010
19-24	Montreal, Canada	IWA World Water Congress and Exhibition
20-24	Paraná - Brazil	Simpec II - Paranaense Symposium on climate studies and 19th Week of Geography
21	Mexico DF, Mexico	Latin American Conference on GIS in Education
21-24	Portland, OR, EUA	ION GNSS 2010 Conference Programme
22	Washington DC, USA	LI Geocloud 2010
22	Washington DC, USA	Location Intelligence 2010
22-24	Mexico DF, Mexico	17th Latin American ESRI User Conference 2010
22-24	Merida, Venezuela	1st Venezuelan National Congress on Geographic Information Systems GIS - CONAVESIG
23 *NEW*	São Paulo SP, Brazil	Geocertification of Rural Property

Global Spatial Data Infrastructure Latin America and the Caribbean Newsletter

23-24	Calgary, Alberta, Canada	GIS for Oil & Gas Conference and Exhibition
23-24	Daytona Beach FL, USA	4th Annual Central Florida GIS Workshop
26-30	Fortaleza, Ceará, Brazil	IX Brazilian Symposium on Geographical Climatology - IX SBCCG
Sep.26-Oct.1	Belém, Pará, Brazil	45th Brazilian Congress of Geology
27-30	Jackson Hole WY, USA	Remote Sensing & Hydrology Symposium 2010
28-29	Plymouth MI, USA	PLM Road Map 2010
Sep.28-Oct.1	Orlando FL, USA	GIS-Pro 2010: URISA/48th Annual URISA Conference & Exposition
Sep.29-Oct.1	Merida, Venezuela	1st National Congress on Geographic Information Systems GIS (ConaSIG)" E-mail: aseciam@gmail.com or aseciam@ula.ve
Sep.29-Oct.3	Savannah GA, USA	National Conference on Geography Education
Sep.30-Oct.1	Regina SK, Canada	ESRI Regional User Conference
Sep.30-Oct.2	Tempe AZ, USA	International Associations for the Study of the Commons USA Regional Meeting

OCTOBER 2010

3	Santiago, Chile	GEOSS Workshop XXXIX – Forest and Bio-energy
4-7 *NEW*	Canoas RS, Brazil	Integrated Symposium on Geotechnologies of Southern Cone - SIG-SUL 2010
4-8	Santiago, Chile	Latin American Remote Sensing Week (LARS)
4-6	Atlantic City NJ, USA	MAC URISA 2010 Conference
5-7	Rio Claro, São Paulo, Brazil	I Brazilian Congress of the Space Organization and X Graduate Geography Seminar UNESP Rio Claro
6-7	Toronto ON, Canada	ESRI Regional User Conference
6-8	Binghamton NY, USA	Race, Ethnicity and Place Conference
8-12	Buenos Aires, Argentina	International Congress on Bicentenary Geography, 71st Geography Week
8-12	Guanajuato, Mexico	14th SELPER International Symposium
10-14	Florianópolis, SC, Brazil	9th Congress of Multipurpose Technical Cadastre and Territorial Management COBRAC 2010
12-14	Guayaquil, Ecuador	International Workshop on ENSO, Decadal Variability and Climate Change in South America
13-15	Frankfort KY, USA	2010 Kentucky GIS Conference
16	Cáceres MT, Brazil	3rd Symposium on Wetland Geotechnologies Further information: http://www.geopantanal.cnptia.embrapa.br/2010/
17-20	Dearborn MI, EUA	2010 ESRI Electric & Gas User Group Conference
18-20	Denver CO, USA	2010 ESRI Health GIS Conference
18-22	Singapore, Singapore	GSDI 12 World Conference 2010: Realizing Spatially Enabled Societies
18-22	Orlando FL, USA	E-Learn 2010
19-20	Ottawa, Canada	ESRI Regional User Conference
19-21	Curitiba Paraná, Brazil	IX Updated Seminar on Remote Sensing and Geographic Information Systems Applied to Forestry Engineer
19-23	San Francisco CA, USA	Oracle OpenWorld
20-21	Naperville IL, USA	ILGISA Fall Conference
20-22	La Cumbre, Cordoba, Argentina	First International Conference on Advances in New Technologies, Interactive Interfaces and Communicability (ADNTIIC 2010)
20-22	Santiago, Chile	IAOS/Scorus Conference on Official Statistics and the Environment: Approaches, Issues, Challenges and Linkages

Global Spatial Data Infrastructure Latin America and the Caribbean Newsletter

20-23	Fort Worth TX, USA	Applied Geography Conference
24-26	Saratoga Springs NY, USA	2010 New York State Geographic Information Systems (GIS) Conference
24-27	Lake Buena Vista FL, USA	Pictometry FutureView 2010
25-26	Montevideo, Uruguay	First Uruguayan Congress on Spatial Data Infrastructure: Contributing to Development of a Regional Network
25-28	Houston TX, USA	GITA's GIS for Oil & Gas Conference
25-28	Nashville TN, USA	GEOINT Symposium 2010
26-27	Fredericton NB, Canada	ESRI Regional User Conference
Oct.28-Nov.1	Sao Paulo SP, Brazil	GEOINFO 2010 - XI Brazilian Symposium on Geoinformatics

NOVEMBER 2010

1-4	Nashville TN, USA	GEOINT 2010
1-5	Vancouver BC, Canada	4th International Workshop on Semantic and Conceptual Issues in GIS (SeCoGIS 2010)
2 *NEW*	San Jose CA, USA	1st International Workshop on GeoStreaming (IWGS2010)
2-3	Vancouver BC, Canada	ESRI Regional User Conference
2-5	San Jose CA, USA	ACM SIG SPATIAL GIS 2010
4	Oakville ON, Canada	GITA Ontario Chapter Fall Forum 2010
4-5	Denver CO, USA	MAPublisher Training
8-9 *NEW*	Lima, Peru	International Congress on Disaster and Land Management in the Americas
8-10	Las Vegas NV, USA	Trimble Dimensions 2010
8-12 *NEW*	Nayarit, Mexico	National Convention of Geography and the Environment 2010 Contact: convencion.geografia@inegi.org.mx
8-12	Guanajuato, Mexico	XIV International SELPER Symposium "Observation & Monitoring of the Earth Related to Climate Change" (An ISPRS Regional Conference) E-mail: silvia.casas757@gmail.com
8-12	Lima, Perú	Joint Meeting of PAIGH Board Council, Americas Geocentrical Reference System (in Spanish SIRGAS) and School of "References System" (in Spanish IAG-SIRGAS)
15-21	Bahía Blanca, Argentina	1 st Working days on new Southern Argentina Geographic Information Technologies Further information: Jornadasinfogeo@gmail.com
15-19	Orlando FL, USA	AutoCarto 2010
15-19	Orlando FL, USA	ASPRS/CaGIS 2010 Fall Specialty Conference
16-17	Huntsville AL, USA	Rocket City Geospatial 2010
16-18	Orlando FL, USA	Commission IV Symposium "Geodatabases & Digital Mapping" / Marguerite Madden (President Commission IV) / mmadden@uga.edu
16-19	Havana, Cuba	IV Conference of the Latin American Population Association "Cultural conditions and transformations, economic factors, and demographic trends in Latin America"
16-19	Orlando FL, USA	ISPRS Commission IV - Geodatabases and Digital Mapping
17-18	Tallahassee FL, USA	Seven Hills Regional User Group for GIS (SHRUG)
17-18	St. John's NL, Canada	ESRI Regional User Conference
22-26	San Miguel de Tucumán, Argentina	First Latin-American Congress (IV Argentinean) on Biodiversity and Conservation 2010 , Information: info@biodiversidad.com.ar
Nov. 30-Dec 2	Las Vegas NV, USA	Autodesk University 2010 Conference and Exhibition

DECEMBER 2010

6-10	Port of Spain, Trinidad	URISA's 5th Caribbean GIS Conference
------	-------------------------	--

Global Spatial Data Infrastructure Latin America and the Caribbean Newsletter

YEAR 2011

[Year 2011](#) [January](#) [February](#) [March](#) [April](#) [May](#) [June](#) [July](#) [August](#) [September](#) [October](#) [November](#) [December](#)

JANUARY 2011

19-21	Washington DC, USA	ESRI Federal User Conference (FedUC)
-------	--------------------	--

FEBRUARY 2011

2-4	Washington DC, USA	ESRI Federal User Conference (FedUC)
7-9	New Orleans LA , USA	International LiDAR Mapping Forum
7-11 *NEW*	La Havana, Cuba	VII International Congress GEOMATICS 2011
23-24	Redlands CA, USA	2011 ESRI California/Hawaii/Nevada Regional User Group Conference
23-28	Gosier, Guadeloupe, France	GEOProcessing 2011: The Third International Conference on Advanced Geographic Information Systems, Applications, and Services

MARCH 2011

6-8	Palm Springs CA, USA	2011 ESRI Worldwide Business Partner Conference (BPC)
7-10	Palm Springs CA, USA	2011 ESRI Developer Summit
21-24	Myrtle Beach SC, USA	Coastal GeoTools 2011
28-31	Fresno CA, USA	17th Annual California GIS Conference - Meeting California's Challenges

APRIL 2011

14-15	Resistencia, Chaco, Argentina	First National Congress of Geographic Information Technologies and Fourth Meeting of Members of Geographic Information Technologies of the NEA Contact: labtig@hum.unne.edu.ar
-------	-------------------------------	--

MAY 2011

1-5	Milwaukee WI, USA	ASPRS 2011 Annual Conference "Ride On The Geospatial Revolution"
2-4	Jacksonville FL, USA	2011 ESRI Southeast Regional User Group
14-18 *NEW*	Victoria BC, Canada	International Marine Conservation Congress: Call for proposals

JUNE 2011

27-30 *NEW*	Atlanta GA, USA	2011 URISA GIS in Public Health Conference
-----------------------	-----------------	--

NOVEMBER 2011

14-18 *NEW*	Santiago, Chile	UGI 2011 Regional Geographic Conference
-----------------------	-----------------	---

[\(Back to Top\)](#)

Global Spatial Data Infrastructure Latin America and the Caribbean Newsletter

Please mention SDI-LAC as source of information in any correspondence you may have on items in this issue

To subscribe to SDI-LAC, please do so online at:
<http://www.gsdi.org/newslist/gsdsubscribe.asp>
Nancy Aguirre, PAIGH, Editor cnaguirre@ipgh.org
Global Spatial Data Infrastructure Association,
<http://www.gsdi.org>

DISCLAIMER:
GSDI, PAIGH and the Editor will not be held liable for any errors, mistakes, misprints or incorrect information. Copyright © 2010. All rights reserved.