

Spatial Data Infrastructure – Asia and the Pacific (SDI-AP) is a free electronic newsletter from the [Global Spatial Data Infrastructure Association \(GSDI\)](#) which is available in both English and Chinese language versions. The newsletter is produced for people interested in Spatial Data Infrastructure, GIS, remote sensing and geospatial data issues in Asia and the Pacific. It aims to raise awareness and provide useful information to strengthen SDI initiatives and support synchronising these activities across the region. Support for the newsletter is also provided by the [Permanent Committee on Geographic Information for Asia and the Pacific \(PCGIAP\)](#), a regional forum to enhance cooperation in the development of a regional geographic information infrastructure. The newsletter is currently being produced for GSDI by the [Centre for Spatial Data Infrastructures and Land Administration](#) at the University of Melbourne.



To subscribe to SDI-AP use [this link](#). Back issues of the newsletter are at the [GSDI website](#). You can also sign up for [GSDI News List](#) to receive alerts of special news and announcements as well as notification of new issues of the SDI-AP newsletter. To subscribe and access archives of thematic or regional discussion lists [please visit](#).

## Contents

Message from the editors .....	1
Contributions .....	2
GSDI News .....	2
SDI News, Links, Papers, Presentations .....	2
SDI Spotlight .....	4
GIS Tools, Software, Data .....	6
News from abroad .....	9
Articles .....	14
Books and Journals (including Videos and Web publications) .....	15
Just for Fun! .....	16
Training Opportunities .....	17
Funding Opportunities, Awards, Grants .....	18
Employment Opportunities .....	19
Conference Proceedings .....	19
Conferences, Events .....	21

## Message from the editors

Welcome to the November edition of the newsletter. We are pleased to report that the GSDI Conference held in Singapore October 19–22, 2010 was been very successful. The conference was attended by over 650 delegates from 67 countries. The workshops and keynote presentations each addressed the topic “Realising Spatial Enabled Societies”. The GSDI website is currently being updated with the papers and presentations from the conference.

Readers will note that the section “Books and Journals (& Videos) has again been expanded.

If you have news or information related to SDI, GIS, RS or spatial data that you would like to share with the community (e.g. workshop announcements, publications, reports, websites of interest etc.), [kindly send us the materials by the 25<sup>th</sup> of the each month](#) for your contribution to be included in the next newsletter.

Malcolm Park and Serryn Eagleson ([Editors](#)), at the [Centre for Spatial Data Infrastructures and Land Administration](#), The University of Melbourne.

[Back to contents](#)



### [Spatial Data Infrastructure \(SDI\) - A Symbol of Confidence and Trust](#)

Tuesday, October 5th 2010 by [John Moeller](#)

What do a community youth mapping project in Alexandria, Va., a Cape Cod Commission effort to map water wells, and a law enforcement agency's use of satellite imagery to certify swimming pools have in common? Each is the subject of a recent newspaper article and while not unique on its own, when put together they illustrate key points about the current and future prospects for spatial data. This article addresses the following issues: The importance of easily accessible and usable spatial data, Value and economic ramifications and Legal and policy issues

Source: Directions magazine

### [Spatial Data Infrastructure Facebook Page](#)

### [ISO acknowledges work of geographic standards committee](#)

#### **ISO/TC211 receives Leadership Award for outstanding contribution to development of international standards for geographic information**

At the General Assembly of the International Organization for Standardization (ISO) held in Oslo, Norway last week, the Technical Committee for Geographic Information/Geomatics ([ISO/TC211](#)) received the Lawrence D. Eicher Leadership Award for its outstanding contribution to the development of international standards for geographic information.

Source: ODSM

### [OSDM, OGC sign MoU at spatial@gov](#)

The Office for Spatial Data Management (OSDM) has signed a Memorandum of Understanding with the Open Geospatial Consortium (OGC). OSDM is currently working to unite the standards work being done by organisations across Australia, such as Defence Imagery and Geospatial Organisation (DIGO), Cooperative Research Centre Spatial Information (CRCSI), Public Sector Mapping Agencies (PSMA) Australia and the Australia New Zealand Land Information Council (ANZLIC).

The ultimate aim will be to streamline the geospatial standards activities in Australia (both organisations also work closely with ISO TC211), education and promotion to help improve business processes, reduce duplication of effort, protect long-term technology investments and reduce risk associated with information infrastructures.

Source: Spatial Source

### [LAPAN will launch two satellites](#)

The Indonesian Institute of Aviation and Space Agency (LAPAN) will launch two satellites in the second quarter of 2011. The satellites named Lapan – A2 and Lapan – Orari are now in the process of design completion for immediate orbital launch independently by Lapan. Successful independent launch will mark a new era of national technology achievement in rocket and satellite technology.

Lapan-A2 is designed to support disaster mitigation efforts through earth observations. The satellite can also be used to obtain information on natural resources, spatial and environmental. Another function of Lapan-A2 includes data collection of weather, ships navigation, transportation, education, healthcare, and defense.

Source: [Spatial Source](#) and Indonesia Today

### [U.S. 2011 NSDI CAP is open for proposal submissions](#)

The U.S. Federal Geographic Data Committee (FGDC) has formally announced the request for proposals to support the 2011 National Spatial Data Infrastructure (NSDI) Cooperative Agreements Program (CAP). A total of \$800,000 is available to award an estimated 21 innovative, geospatial-related projects that are spread across six categories. Each project will focus on ways to expand the geospatial data infrastructure that is necessary to effectively discover, access, share, manage and use digital geographic data. The closing date for the 2010 NSDI CAP announcement is January 6, 2011. The project awards are scheduled to be announced by USGS/FGDC contracts officer in February 2011 with obligated work to begin on each project no later than September 30, 2011. More information is available at

<http://www.fgdc.gov/grants/2011NSDICAP/2011CAPDescriptions>.

To date the annual NSDI CAP awards have supported outreach and coordination, standards and metadata implementation, partnership development, State strategic and business plan development, map and geospatial data services deployment, geo-enablement of data, and NSDI training. All levels of government, academia, and private sector have participated in this national effort to implement the NSDI. Since 1994 CAP awards have played a substantial role in advancing and promoting the goals of the NSDI to both geospatial and non-geospatial communities.

[Back to contents](#)

In 2010, [NSDI CAP awarded a total of 26 projects, totaling over to \\$1.1 million](#). To date the annual NSDI CAP awards have supported outreach and coordination, standards and metadata implementation, partnership development, State strategic and business plan development, map and geospatial data services deployment, geo-enablement of data, and NSDI training. All levels of government, academia, and private sector have participated in this national effort to implement the NSDI.

Source: [USGS press release](#) [Thanks to Wonkug Baek for this item]

### [More powers to Australia's Geospatial Organisation](#)

The power of Australia's Defence Imagery and Geospatial Organisation is set to increase with legislative amendments. The changes, reintroduced to parliament after August's federal election, are to a trio of acts governing ASIO, three other spy agencies, and the Commonwealth's "wiretap" act.

Source: [Sydney Morning Herald](#) and Geospatial World Weekly (October 18)

### [Ecuador to ensure spatial info about every institution](#)

National Secretariat of Planning and Development (SENPLADES), Ecuador, seeks to update and systematise the database sectional territorial entities. It aims to validate spatial information of each autonomous governments and public institutions by 2012.

Source: Geospatial World Weekly (October 18)

### [U.S. FGDC endorsed 64 External Standards for Geospatial interoperability](#)

The U.S. Federal Geographic Data Committee (FGDC) has officially endorsed 64 non-Federally authored standards that play an important role in enabling geospatial interoperability. The standards include standards from Open Geospatial Consortium; ISO Technical Committee 211, Geographic information/Geomatics; the American National Standards Institute (through International Committee for Information Technology Standards Technical Committee L1, Geographic information systems) and de facto standards. The FGDC Steering endorsed these standards in accordance with the FGDC Policy on Recognition of Non-Federally Authored Geographic Information Standards and Specifications [\[PDF\]](#). This was the first time this policy was exercised. The standards were identified and reviewed by the FGDC Standards WG (SWG), reviewed and voted upon by the FGDC Coordination Group (CG), and then endorsed by the FGDC Steering Committee. For a list of the endorsed standards, please visit FGDC Endorsed External Standards [page](#) on the FGDC [website](#). The FGDC is an interagency committee that promotes the coordinated development, use, sharing, and dissemination of geospatial data on a national basis.

Thanks to Wonkug Baek for this item

[Back to contents](#)

## SDI Spotlight

This month the *Spotlight* feature is contributed by PhD candidate [Nilofer Tambuwala](#) of the [CSDILA](#) at the University of Melbourne. Her professional interests are in Mapping and GIS, SDI, Land administration, and Indoor positioning systems with "Building National Infrastructures for Managing Land Markets" being her research area.

### **A national property information infrastructure for managing land and land related markets**

Transactions in land form the cornerstone of most market economies. Land administration provides the infrastructure for secure land market transactions. In most federated market economies land administration is undertaken by the state and territory governments while macroeconomic policies to regulate the land market occur at central level.

In Australia, one of the oldest tradable assets is land. Australia's states and territories run successful Torrens land registration systems that generate secure titles to parcels. The transferability of rights in land underpins an active and secure land market that plays a key role in the country's economic progress.

[Back to contents](#)

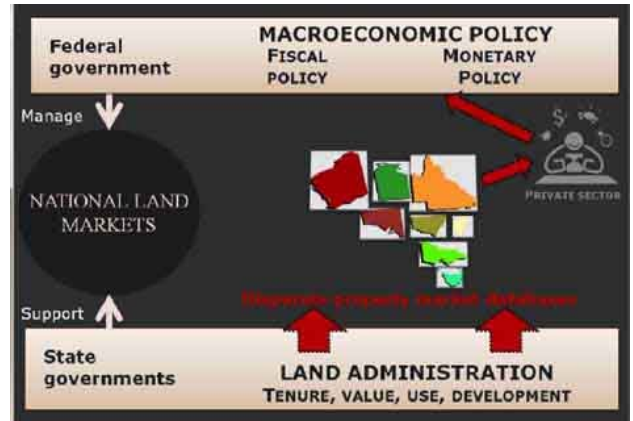


Australia's land information systems, supplied by independent land administration agencies, have served the nation well. However their capacity to meet Australia's increasingly national drivers, particularly national economic policy, is challenging, due to inadequate information flows between state and central government. With the state based laws and processes, central policy departments struggle to access national property information to regulate a market that is increasingly national in focus: Figure 1.

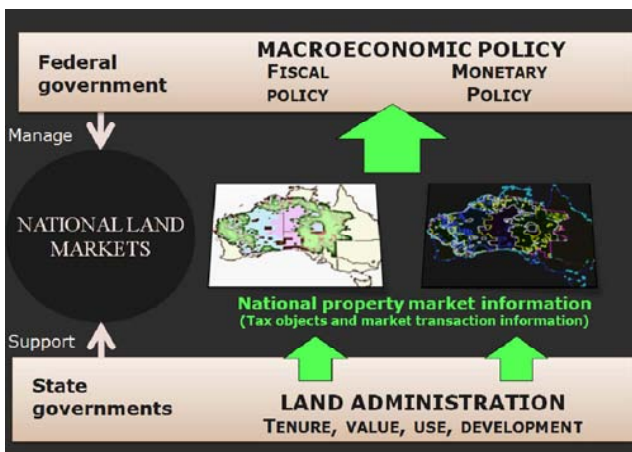
The recent global financial crisis decreased real estate values in major market economies around the world. From the land administration perspective, this crisis was a result of poor decision making and ill-informed policy due to the lack of national property datasets, particularly in the United States. The financial crisis affected the federal governments of many economies, including Australia, through lower tax revenues from both income and capital gains tax, and increased spending in the form of economic stimuli. Essentially, fiscal and monetary policy decisions to combat the financial crisis left many market economies with large budget deficits and significant foreign debt. By mid 2010 a sense of urgency was evident in efforts to redefine the role played by land administration in implementing federal policies that regulate land markets, especially in federated mixed capitalist nations.

Developments of initiatives in the land administration industry have received considerable discussion. Initiatives aimed at linking the various state-based spatial data infrastructures (SDI) aim to provide improved efficiencies and cost savings to users. These need to be taken one step further, by designing and building a national infrastructure that can record individual rights, restrictions and responsibilities relating to land and new commodities in land.

The unbundling of land and creation of complex commodities related to land also contribute to economic wealth. Interests in land are now increasingly complex. Land management increasingly involves environmental, heritage and use restrictions. New forms of property as tradable commodities are also emerging, for example water, biota, mining and carbon credits. For instance, an important flexibility mechanism established under the Kyoto Protocol allows 'emission credits' to be traded between those who need to acquire credits and those who have reduced emissions beyond their agreed targets.



**Figure 1:** Current information infrastructure in Australia



**Figure 2:** Ideal information infrastructure in Australia

Research conducted here aims to show that land markets for existing and emerging interests need a national property information infrastructure to record ownership rights, restrictions and responsibilities, in addition to the market value of these commodities. Additionally, it will present the policy and institutional framework, and data integration model for such an infrastructure.

As a result, climate change has created a new economic opportunity for Australia and the world. Australia can make decarbonisation economically viable and profitable while achieving its goal of reducing carbon emissions by up to 25 per cent below 2000 levels by 2020.

New markets involve new taxable commodities and transactions, and changes to the availability and supply of money in the economy. Effective fiscal and monetary policies, to regulate these new markets will need national, authoritative market information. To facilitate this, the cadastral structure of land parcels needs to be refocused to deliver information about new taxable objects and market transactions to improve management of these emerging markets: Figure 2

## GIS Tools, Software, Data

### [China unveils official state online world map](#)

China's State Bureau of Surveying and Mapping (SBSM), on October 22, unveiled a state-sanctioned and produced online world map, Map World. An SBSM official said that in the near future, Map World will grow to be a famous Chinese brand for online map services with proven reliability. The map features images of satellite remote sensing with a resolution of 500 meters but this is enhanced to 2.5 meters for the Chinese map and 0.6 meters for maps of more than 300 Chinese cities and uses satellite imagery taken from 2006 to 2010, and took two years to build. The tile-based map has two URLs (< [www.tianditu.cn](http://www.tianditu.cn) > & < [www.chinaonmap.cn](http://www.chinaonmap.cn) >) and has a number of features, including links to separate websites for each of China's provinces. But, SBSM officials said frankly that the Map World is at present no match for top-of-the-line online maps such as Google Earth, saying: "the technology and website construction are still at a preliminary stage. Service providers have more than 80 virtual machines to support the operation with the ability to handle 10 million requests daily, while Google Earth has thousands of virtual machines. Our map service is expected to update the geological data about twice a year, but Google Earth can update its information every couple of minutes."

Source: The Next Web [Thanks to Wonkug Baek for this item]

### [Trimble GPS Handhelds Support Green Initiatives for the City of Shanghai](#)

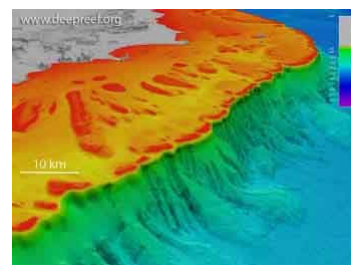
City of Shanghai implements environmentally conscious initiatives using Trimble GPS technology to improve the quality of life for city residents

Source: GIS Lounge

### [Mapping the Queensland seafloor](#)

A researcher at James Cook University in Cairns has produced a three-dimensional bathymetry model of the entire Queensland coast, Great Barrier Reef, and the Coral Sea almost to New Caledonia. Robin Beaman said the depth model can represent seabed features down to 100 metres in size, revealing the seafloor in unprecedented detail for such a large area.

Source: SpatialSource



### [Logistics supplier firm calls for 'Virtual Australia'](#)

Michael Haines, Chief Executive Westgate Ports, a large ports logistics supplier in Australia, has called for a government enterprise to manage the country's virtual asset base. Haines said that its organisation's prime goal would be to maintain a vast national database required to provide an accurate, topographic 3D map of the country or "Virtual Australia".

Source: [Geospatial World Weekly](#) and the *Australian* newspaper and [Asian Surveying & Mapping](#)

### [High-tech PCR vans for Commonwealth Games](#) (New Delhi, India)

It will take only one minute for police control room (PCR) vans to reach any Commonwealth Games venue, with more than 100 deployed to respond to any emergency calls in New Delhi, India. All PCR vans are now equipped with GPS and GIS technology. An online city map has been installed at the Central PCR to track the movement of these vehicles.

Source: Geospatial World Weekly

### [GeoNetwork opensource v2.6.0 released](#)

GeoNetwork opensource is part of the [Open Source Geospatial Foundation](#) software stack, providing software you can trust to be free, open and sustainable. Voluntary support is provided through mailing lists, websites and online forums.

### [APSEA Awards Recognise Excellence in Spatial Industry](#)

The seventh annual Asia Pacific Spatial Excellence Awards, held at the gala dinner during spatial@gov 2010 conference in Canberra, celebrated the pinnacle of success for the spatial industry. The awards are hosted jointly by the Surveying and Spatial Sciences Institute and the Spatial Industries Business Association. These awards continue to provide an opportunity for the industry to focus on the excellence of individuals and organisations throughout the region.

Source: [Asian Surveying & Mapping](#) and [www.SpatialSource.com.au](http://www.SpatialSource.com.au)

[Back to contents](#)

### [National Atlas of Indonesia to Help Define National Identity](#)

The International Cartographic Association with cooperation of the geography faculty at the University of Gadjah Mada in Yogyakarta, Indonesia is hosting a workshop from Oct. 20-23 to discuss The National Atlas of Indonesia. The gathering will focus on national, regional, city and school atlases of the country.

While these atlases will help the country define its identity by providing a means for communication and instruction, they also contribute to the economic, environmental and social development in the country by relating space-based information.

While the bulk of the workshop will be devoted to discussions about the layout and content of the atlas, it will also relate the work to past atlases and cartography in the region. For more information regarding this event, visit the ICA [website](#).

Source: Asian Surveying & Mapping

### [New Zealand's Topographic maps available online](#)

New Zealand topographic maps are now available for free on < [www.nztopomaps.com](http://www.nztopomaps.com) >. The online service allows users to quickly find, view and print topographic maps. Users can use it in planning recreational, business and research activities. The new website includes a place name search function and provides fast and simple access to the 'NZTopo' Topographic Map Series, which are traditionally purchased as printed paper maps.

The 'NZTopo' Topographic Map Series has been produced by Land Information New Zealand (LINZ). The maps are also an essential tool for defence planning, location and routing services and land management.

The service is also available on smartphones and makes use of their in-built GPS capabilities. Screen shots from an iPhone to demonstrate the use of nztopomaps.com on a smartphone are available on media resources page at < <http://www.nztopomaps.com/media/> >.

Source: [Geospatial World Weekly](#) and < [www.infonews.co.nz](http://www.infonews.co.nz) >

### [Taiwan: GIS helped prevent casualties during Typhoon Fanapi](#)

A geographic information system (GIS) used to monitor the country's traffic proved effective at keeping motorists away from potentially dangerous roads when Taiwan was struck by Typhoon Fanapi in mid-September according to the Directorate General of Highways (DGH).

Source: [Geospatial World Weekly](#) and < <http://focustaiwan.tw/> >

### [CartoView - Web Map Authoring Tool](#)

CartoView is a free web map authoring tool from CartoLogic. CartoView allows you to easily create web maps using Google Maps, Google Earth browser plug-in or Openlayers. If you browse through the examples on the demo page you will see some of the capabilities that CartoView offers. This example shows a map created with CartoView with mashups from Flickr, YouTube, Wikipedia, Gowalla and Twitter.

Source: [Asian Surveying & Mapping](#) and CartoView homepage

### [Going High-tech to Probe Deeper into Oceans](#)

Australian scientists are preparing to use the data from a new \$22m array of high-tech equipment to help them probe deeper into the nation's surrounding oceans. The new technology is part of a vastly improved set of tools provided by the Australian Integrated Marine Observing System (IMOS) to study the open ocean

Source: [V1 Magazine](#) and CSIRO News

### [Open Source Mapping shakes competitors](#)

OpenStreetMaps could become the leading digital map provider within a few years, if technology giants like Microsoft, AOL and third party application developers continue to choose its free, open source mapping database for their location-based applications, [Dow Jones](#) reports.

Source: [GeoSpatial World](#) and *Dow Jones*

### [TerraGo, Adobe team up for Acrobat X solutions](#)

Adobe Systems Incorporated and TerraGo Technologies have announced an initiative to support geospatial capabilities for customers of Acrobat X solutions. TerraGo has been working closely with Adobe to provide an upgrade path for Acrobat 9 Pro Extended customers who need to continue to author geospatial PDF files and perform advanced geospatial functions. In addition, Adobe and TerraGo have signed an agreement under which TerraGo is providing software engineering services in support of geospatial PDF consumption in Acrobat X and Reader X.

Source: [GeoSpatial World](#) & TerraGo [Press Release](#)

[Back to contents](#)

### **[GIS-based tool to evaluate Taiwan groundwater](#)**

SuperGeo developed the Groundwater Recharge Potential Evaluation Platform for Taiwan. The platform aims to collect complete data of different areas by evaluating groundwater recharge potential and creating a groundwater mode. The company believes that it will enhance accuracy of hydrogeology map of groundwater area and groundwater resources will be evaluated efficiently.

Source: GeoSpatial World and [SuperGeo Library](#) and [Case Study](#)

### **[Delhi's Development through maps - Maps and satellite images form a significant part of this exhibition.](#)**

The capital city of India, Delhi is a gateway to the country on a global stage and is a city of incredible complexity, with immense developmental changes and progress over centuries. To take the citizens and visitors of Delhi through the diversity, the multiplicity and the journey of the city down the years, Delhi Urban Art Commission (DUAC) is presenting the exhibition Delhinama, biography of the city coinciding with the Commonwealth Games 2010 being held here. The exhibition is funded by the Ministry of Urban Development, Government of India.

Source: GeoSpatial World

### **[Malaysia launches E-Cadastre project](#)**

Malaysia launched the E-Cadastre Project at the Dewan Perdana Felda on the occasion of 125th anniversary of the Department of Survey and Mapping (DSMM).

Source: [GeoSpatial World](#) and Malay Mail

### **[Malaysia to enhance usage of geospatial data](#)**

Malaysian government will formulate a policy and act to encourage and enhance the usage of geospatial data, according to Tan Sri Muhyiddin Yassin, Deputy Prime Minister, Malaysia. He said that the geospatial act would focus on data confidentiality and safety, the principles of custodianship, data sharing, data integration, data dissemination and standards.

Source: [GeoSpatial World](#) and Malaysian National News Agency

### **[gvSIG EIEL, new official product for managing the Survey of Local Infrastructure and Equipment](#)**

The Cartolab team, in collaboration with the gvSIG Association, has created the first official product of the gvSIG project specifically to one sector, called gvSIG EIEL.

gvSIG EIEL enables a simple and comprehensive management of all processes related to the development of the Survey of Local Infrastructure and Equipment.

The EIEL (the Spanish acronym for the Survey of Local Infrastructure and Equipment) is an initiative of the Ministry for Territorial Policy of Spain. That Ministry has used it for over 20 years to identify the needs of local authorities of almost all the Spanish State. The dramatic improvement of Geographical Information Systems (GIS) creates new possibilities for analysis and management of the local infrastructure and services contained in the EIEL.

gvSIG EIEL is an application aimed at technical experts from local and regional councils. It's based on a customization of gvSIG through a series of extensions and specialized modules that enable to input and update alphanumeric and geospatial data, to digitalize infrastructures, to validate the information required by the Ministry for Planning Policy for the EIEL, etc.

Although gvSIG EIEL is geared to Spanish law, it can be used as a basis for developments with similar objectives in other countries.

For more information on gvSIG-EIEL, [visit](#).

### **[Reform in address system to boost LBS](#)**

The new address system in South Korea to be used from 2012, based on the names of streets and buildings, is expected to create a market worth over KRW 300 billion across the IT industry. The current system is parcel-based. The Ministry of Public Administration and Security announced on October 18 that it provides preliminary guide for the new system from October 27 to November 30. The ministry is planning to gather public opinion and finalize the preparations for it by July next year. "The address system, to be changed in about a century, can save KRW 4.3 trillion a year on the national level, giving a boost to the LBS (location-based service) industry," said Minister Maeng Hyung-gyu. With the schedule specified, public and private companies are moving to introduce the new system. Financial institutions are considering how to upgrade their CRM (customer relationship management) solutions. Also expected is a series of system replacement projects in the sectors relying highly on GIS (geographic information system) such as door-to-door delivery, telecom, etc. GIS

[Back to contents](#)



providers are poised to make it big, too. President Kim In-hyun of KSIC (Korea geoSpatial Information & Communication) said, "Local GIS firms are likely to overwhelm their foreign counterparts, rather underprepared, in the new market." He continued, "A lot of Internet portal sites as well as financial institutions are contacting us these days."

Source: [www.etnews.co.kr](http://www.etnews.co.kr) [Thanks to Wonkug Baek for this item]

### [Indonesia - Tsunami Warning System Monitoring](#)

During the past week we have learned that the existing Tsunami Warning Systems in Indonesia have been vandalised. This act may have contributed toward the greater number of deaths as, any warning was non-existent. However, at least one Australian reports that even if the system were working, it is unlikely that would have made much difference. Nevertheless, it does raise the case for improved operational monitoring. ... Although one scientist from the Australia Bureau of Meteorology felt that it would not have made much difference had the system been operating in this case, due to the closeness of the origin and the lack of time to take action.

Source: Asian Surveying & Mapping

### [GIS in Pakistan](#)

GIS isn't a new technology but for developing countries like Pakistan, especially when they are on the other side of the digital divide, adopting and benefiting from these technologies becomes challenging and problematic. Pakistan has near 12% internet penetration, somewhat higher since other countries with the same GDP/capita rank lower. The primary reason has been government ICT schemes and promotion of new technologies.

Source: Asian Surveying & Mapping and [WordPress.com](http://WordPress.com)

[Back to contents](#)

## News from abroad

*"This section has been included to highlight some of the developments happening outside the region which demonstrate SDI in action."*

### [The Geospatial Revolution](#)

Episode 1 of the Geospatial Revolution project being developed at Penn State University has now been released. To view go to <<http://geospatialrevolution.psu.edu/>>

Source: [Veryspatial](#) [further information in the "[Books and Journals](#)" section]

### [Google Earth Photos Help Show Proximity to Crime Scene in Burglary Case](#)

by Charles Toutant (*New Jersey Law Journal*, September 28, 2010)

Lawyers in a New Jersey burglary case seem to have stumbled upon a new terrain for photographic evidence: Google Earth.

An appeals court on Monday found no error in allowing prosecutors to use satellite photos from the global mapping service to help show the perpetrator's proximity to the crime scenes -- specifically, by pinpointing the location of cellular towers near his home and the burgled residence.

Source: [Law.com](#)

### [USGS map service gets rid of aerial image "mess"](#)

The USGS map service is called the [National Map Seamless Server](#) and it's taking aerial image access to a new level.

The Seamless WMS provides orthoimagery (images processed to overlay on maps) of major U.S. urban areas, streets, bridges, buildings, sidewalks, streams and more at 3-inch, 6-inch, 1-foot, and 2.5-foot spatial resolutions. This means objects roughly these sizes are identifiable on the ground. Because of its detail - better than Bing or Yahoo! - the imagery can provide a critical tool for resource managers, city planners, emergency responders, open data digitizers and others. And it's served in an open standard interface (WMS) that's not controlled by any one organization or group like Google - so the official data can be shared all over the Net. Overlaid on top of the High Resolution Orthoimagery WMS above are Roads from the USGS [Framework Web Map and Feature Services](#). The free spatial data infrastructure (SDI) platform [Gaia](#) is used for access and map display.

Source: Carbon Cloud blog

[Back to contents](#)

### [US midterm elections map – Where they are and the contests to watch](#) [interactive map]

On 2 November, the US holds midterm elections to Congress. See what the predictions are for the Senate, House and state governors, how the Republicans and Democrats compare and which races are too hard to call. Source: The *Guardian* newspaper

### [NABARD launches SMS-based crop advisory](#) (India)

In a bid to provide updates on weather, prices of inputs and produce as also other crop advisory services National Bank for Agriculture and Rural Development (NABARD) has decided to bring these services via SMS to the farmers and members of watershed committees involved in execution of watershed projects under Indo-German Watershed Development Programme.

Source: thanks to Kate Lance for this item

### [Russian continental shelf mapping in the Arctic Ocean](#)

Source: Arctic Mapping & the Law of the Sea blog

### [Gotthard: Longest Rail Tunnel Cut-through with Leica Geosystems Precision](#)

A new world record was created on 15th October, when the miners working on the Gotthard Base Tunnel shook hands after the breakthrough between the Sedrun and Faido access points. The 57 km Gotthard Base Tunnel is the longest rail tunnel in the world. Leica Geosystems – the Heerbrugg-based company's surveying instruments are in use in all areas of the Gotthard Base Tunnel. See also [news.com.au](#) and [theage.com.au](#)

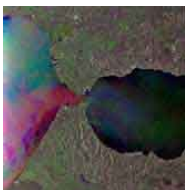
Source: [Asian Surveying & Mapping](#) and Leica GeoSystems (from which a 3 page PDF brochure is available).



### [US FGDC endorses OGC standards](#)

The US Federal Geographic Data Committee (FGDC) Steering Committee has officially endorsed a group of OGC standards along with other standards developed externally to FGDC. These standards play an important role in enabling interoperability as part of the Geospatial Platform for GeoOneStop, place-based initiatives and other potential future programmes of the FGDC.

Source: Geospatial World Weekly (October 18) & OGC [Press Release](#)



### [Envisat radar image shows internal waves in the Strait of Gibraltar](#)

This Envisat radar image shows internal waves in the Strait of Gibraltar, between the southern coast of Spain (top) and the northern coast of Morocco. The strait is the only connection between the Atlantic Ocean (left) and the Mediterranean Sea (right), making it a place of intense study in order to understand the exchange of water between the two.

Source: [V1 Newsletter](#) and European Space Agency "Image of the Week"

### [Climate satellite 'blinded' by radio interference](#)

The European Space Agency (ESA) recently announced that it had launched a behind-the-scenes campaign to shut down illicit radio and TV transmissions interfering with a major climate satellite.

The 315-million-euro (434-million-dollar) Soil Moisture and Ocean Salinity (SMOS) probe "has been bugged by patches of interference from radar, TV and radio transmissions in what should be a protected band," the ESA complained.

Source: Google News and [SpaceFlight Now](#)

### [New technology patrols U.S.-Mexico border unmanned](#) - allows for the surveillance of the border without putting federal agents at risk

If citizens want to see how aerial drone surveillance operations are conducted by the U.S. Border Patrol, they can visit the [Web site](#). In the video, a group of illegal immigrants crossing the Rio Grande are observed in the Rio Grande Valley area and spotted by "The Predator," an Unmanned Aerial Vehicles (UAV) that will be deployed on the U.S. border with Mexico. Alternative video [Web site](#).

Source: *Laredo Sun* and [Geospatial World Weekly](#) (October 18)

### [Great Britain 'alternative gazetteer'](#)

As emergency service control rooms become centralised, there is a risk that they will lose local knowledge and could be confused by callers who use "location lingo" when phoning in with reports of incidents. That is why Ordnance Survey (OS) is investigating the building of an "alternative gazetteer" that would include many nicknames and pet names, which could include, for example, a popular name for a road junction or bridge.

Source: [Geospatial World Weekly](#) (October 18) and Ordnance Survey (UK)

### [High-tech GIS/GPS teaching makes forensics fun](#)

An innovative approach to teaching forensics at the University of Toronto Mississauga, Canada, proved that GPS isn't just useful for finding the nearest gas station — it can actually help solve crimes.

Source: GeoSpatial World and [Metro News](#)

### [U of New Hampshire gets grant to develop climate change school curriculum](#)

As part of a growing national effort to get teachers and students acquainted with the fundamental elements of climate change, researchers from the University of New Hampshire's Institute for the Study of Earth, Oceans, and Space (EOS) have been awarded a USD 487,000 two-year grant from the NASA's Global Climate Change Education Program (GCCE).

Source: GeoSpatial World and [U of New Hampshire press release](#)



### [Exploring Latin America through maps](#)

A mapping exhibition, "Walk Map. Exploring key Latin America" (in Spanish, "Paseo en Mapa. Explorando las claves de América Latina") is presently on in the National Library of Chile. It is part of the bicentennial activities of the Department of Library Archives and Museums (DIBAM), Chile.

Source: Chile.com and [GeoSpatialWorld](#)

### [Educational project to highlight socio-cultural risks - Venezuela](#)

A GIS-based project "Educational Campaign: Community-school to mitigate the socio-cultural risks associated with river basins Osorio and Blue Stone, edo. Vargas," was produced by a team of researchers and teachers from Venezuela. It aims to prevent and mitigate measures arising from the environmental dynamics of rivers and Blue Stone Osorio Vargas state.

Source: GeoSpatial World and [Venezuela News Agency \(AVN\)](#)

### [Brazil trains Latin American foresters in Remote Imaging](#)

Brazil is training a group of experts from Ecuador, Mexico and Guyana and Food and Agriculture Organization (FAO) of the United Nations. Experts will learn techniques to control forest clearing using satellite images. They will be also trained in TerraAmazon, a software developed by National Institute for Space Research (INPE), Brazil.

Source: GeoSpatial World and [spanish.china.org.cn](#)

### [Real-time pollution maps for Europe](#)

Real time maps of air, ground and water pollution across Europe can now be made available to everyone following the launch of an EU-funded research project named INTAMAP.

Source: GeoSpatial World and [ClickGreen.org.uk](#)



### [GIS-based website traces bananas](#)

The website <<http://banana.mappr.info>>, developed by Philippe Rieffel, a student of applied geography at the University of Münster, Germany, under supervision of scientists at the International Institute of Tropical Agriculture (IITA), aims to make a wide range of reliable spatial information on banana readily available to researchers, policy makers and development workers.

...

The platform comes in handy as scientists are grappling with the spread of two deadly diseases that are ravaging the crop and threatening the livelihood of millions of farmers.

These are the Banana Xanthomonas Wilt (BXW) and the viral Banana Bunchy Top Disease (BBTD).

Source: GeoSpatial World and [AfrolNews](#)

### **Data.gov creates US Government's Openness**

As a priority for the U.S. President's Administration, the Open Government Initiative, Data.gov, increases the ability of the public to easily find, download, and use datasets generated and held by the Federal Government. Data.gov provides descriptions of the Federal datasets (metadata), information about how to access the datasets, and tools that leverage government datasets. The data catalogs continue to grow as datasets are added. Data.gov strives to make government more transparent and is committed to creating an unprecedented level of openness. The openness derived from Data.gov will strengthen our Nation's democracy and promote efficiency and effectiveness in government. Federal geospatial data records account for the vast majority of records currently available through the Data.gov portal; these records are added to Data.gov from the Geospatial One-Stop (GOS) registry. Geospatial capabilities of Data.gov continue to mature and a geospatial data viewing capability was recently unveiled. The interactive mapping tool, GEO Viewer, is designed to let users preview the geospatial data available through the Data.gov catalogs.

Thanks to Wonkug Baek for this item

### **U.S. Geospatial One-Stop Grows; Integrated Capabilities can increase Governmental Transparency and Efficiency**

The U.S. Geospatial One-Stop (GOS) portal is the official means for accessing metadata resources managed in the National Spatial Data Infrastructure (NSDI) Clearinghouse Network. Metadata held by Federal, State, local, and Tribal entities, by academic and nonprofit organizations, and by the private sector are published through the Clearinghouse Network. The [GOS portal](#) grew substantially in fiscal year 2010. With more than 430,000 individual metadata records contributed by 435 publishers, the portal saw a 60 percent increase in records from fiscal year 2009. The number of portal users averaged about 100,000 per month in fiscal year 2010, up from 74,000 in fiscal year 2009. An impetus leading to the significant increase in the number of records and usage of GOS was the integration of GOS with Data.gov. A search of the Geodata [catalog](#) in Data.gov is actually a search of selected Federal agency records from the GOS catalog. GOS connectivity to Data.gov is achieved through the use of a Cataloging Service for the Web (CS-W) interface. The GOS team continued to work with Federal agencies to promote collections of records through GOS for discovery in Data.gov. Adding to collections from the U.S. Census Bureau, the U.S. Environmental Protection Agency, and other agencies, several large collections of data were added to GOS this year. The new contributing collections are: US Topo (the next generation of digital topographic maps from the U.S. Geological Survey), high resolution aerial orthoimagery from the U.S. Geological Survey, and Shuttle Radar Topography Mission (SRTM) data from the National Geospatial-Intelligence Agency and the National Aeronautics and Space Administration. In all, over 270,000 records are shared from GOS with Data.gov, which means that 90 percent of the records available in Data.gov are geospatial data from GOS. This is a good example how shared and integrated capabilities can increase governmental transparency and efficiency.

Thanks to Wonkug Baek for this item

### **Canada-U.S. Transboundary Hydrographic Data Harmonization Efforts Gain Momentum**

#### **Editor's Note: this article is well-illustrated by cartography**

It is a truism that Canada and the United States share the longest undefended border in the world. What is often overlooked in the observation, though, is that much of the border is water. More than 300 lakes and innumerable streams and rivers are part of or cross the international boundary, accounting for 40 percent of the 8,000-km (5,500 mi) long border. These lakes, rivers and streams are part of 15 distinct transboundary basins – from Alaska-Yukon border, to Coastal Mountain watersheds of British Columbia and Washington, stretching unbroken across the entire continent to the Great Lakes and St. Lawrence River and beyond to the coastal inlets of the Canadian Maritimes and New England.



More than 100 years ago, the prospect of competing and conflicting uses of two rivers along their border brought home to both countries the need to cooperate on how the water resources they share are managed. For what happens on one side, in terms of use, or diversion or pollution or cleanup, will affect the other. This recognition, in turn, led directly to the establishment of the International Joint Commission (IJC) in 1909 and a century of cooperative management of a shared resource that is unequalled in scale or goodwill anywhere in the world.

Source: V1 Magazine

[Back to contents](#)



### [Case Study: Channel Tunnel IceWatch System](#)

The Channel Tunnel (or Chunnel) connects the United Kingdom with France. It is actually a set of three tunnels, over 31 miles long, that pass beneath the seabed of the English Channel. Because of the huge amount of road and rail traffic at the large terminals at each end of the tunnels, a road-weather information system (RWIS) is critical for safety and efficiency.

An ice-warning system had been in use for 15 years, and had become so obsolete that it could not be upgraded. In addition, the old system was so unfriendly that the operators rarely used it, so user-friendliness was a key requirement for the new system.

Source: Campbell Scientific

### [Math, Maps Used to Plot Malaria Elimination Plan](#)

With the help of mathematical models and maps, two University of Florida researchers have estimated the feasibility of eliminating malaria from countries that have the deadliest form of the disease.

Source: Asian Surveying & Mapping and [www.sify.com/news](http://www.sify.com/news)

### [Without driver or map, vans go from Italy to China](#)

Four driverless electric vans successfully ended a 13,000-kilometre test drive from Italy to China — a modern-day version of Marco Polo's journey around the world — with their arrival at the Shanghai Expo this week.

Source: The (Melbourne) *Age* and [LA Times](#)



### [UN Launches Tool to Map Emergency Stockpiles](#)

The United Nations Office for the Coordination of Humanitarian Affairs (OCHA) and the Logistics Cluster, led by the World Food Programme (WFP), has launched an interactive web-based tool, "Global Mapping of Emergency Stockpiles". The tool displays information on emergency relief warehouses managed by international humanitarian organizations. The aim of this tool is to assist affected countries and humanitarian relief agencies identify and send emergency relief items in response to crises. The Global Mapping of Emergency Stockpiles was established thanks to funding provided by ECHO and the Governments of Luxembourg and Moldova. It is the only existing central platform that emphasizes "who has what where" by region, sector, organization and/or organization type. The development of the Global Mapping of Emergency Stockpiles is a major part of the humanitarian community's efforts to improve emergency response. It contains data about 39 stockpiles from 25 organizations. Information has been so far provided by UN agencies, non-governmental organizations (NGOs) and a number of governmental entities. OCHA is in discussion with other stockpile owners to expand the content of the database. The new Global Mapping of Emergency Stockpiles is [available at](#).

Thanks to Wonkug Baek for this item

### [Carbon Mapping to curb climate change and boost biodiversity](#)

Mapping where a country's carbon stocks overlap with areas that are rich in wildlife and important for local peoples' livelihoods is underway in Asia, Africa and Latin America. The aim is to support international efforts to conserve forests in order to combat climate change. But in a way that delivers other benefits including conservation of economically-important ecosystems linked with water, fertile soils and other crucial services. Under the UN Framework Convention on Climate Change (UNFCCC), governments are negotiating a mechanism to provide payments for Reduced Emissions from Deforestation and forest Degradation plus additional forest "activities" (REDD+), with the aim of halving deforestation by 2020. It is estimated that currently close to 18% of greenhouse gas emissions-equivalent to around six Gigatonnes (Gt) of CO<sub>2</sub>- are linked with land use change, mainly through forest loss. In 2004, this amounted to more greenhouse gas emissions than those of the transport sector. The maps, being compiled by a partnership led by the UN Environment Programme's World Conservation Monitoring Centre (UNEP-WCMC), are overlaying the carbon held in the vegetation and soils of a country's terrestrial ecosystems with other key features. These include population densities; economic activities such as honey and gum production; the location of existing Protected Areas and biodiversity. [For more information](#).

Thanks to Wonkug Baek for this item

## Articles

[Land Maintenance Actions in the Turin Province of Italy, A GIS Approach - Part 2](#) by Godone; Garnero; Chiabrande; Caimi; Stanchi and Zanini. [Part 1 was noted in the October SDI-AP newsletter]

The reduction of land maintenance actions has determined a need for awareness about soil conservation issues. The main consequence is an increasing soil loss due to flash flood or similar phenomena. This issue needs a new approach leading to a continuous analysis and monitoring action. This part's aim is to describe the main steps of the development of the GIS-based methodology to assess soil stability through GIS modelling. Specifically, soil physical structure has been studied by evaluating its aggregate stability. In order to follow a multidisciplinary approach data obtained from the laboratory analysis has been merged with topographical information and vegetation cover records

Source: V1 magazine

[Urban Infrastructure: The time for change is now](#) by Terry D. Bennett

How do we address urbanisation, existing infrastructure and new infrastructure in a synergistic manner? The question that will continually be asked is - Can we fix it, can we change it to match our future needs or is it more cost effective to raze and start over? Which option gives us the best long term ROI? And finding those answers will be an exercise in 3-dimensional (3D) geospatial decision- making.

Source: Geospatial World Weekly

[Tractorbot: Revolutionising farming](#) by Anand Kashyap, Sub-Editor, GIS Development

'Tractorbot' is a reusable system or tool that replaces human controlled agricultural operations with an autonomous tractor by using cutting edge technologies like GPS, GIS, remote video monitoring, artificial intelligence, SMS, etc.

Source: [Geospatial World](#)

[HaptiMap - Haptic, Audio and Visual Interfaces for Maps and Location Based Services](#) by Charlotte Magnusson

The HaptiMap EU project (FP7-ICT-224675) is aimed at making maps and location based services more **accessible** by using several senses like touch, hearing and vision. HaptiMap is a four year project, and is currently half-way: HaptiMap started in 2008 and has been running for two years.

Source: V1 magazine

[FIG article of the month \(October\)](#)

"Reducing Vulnerability to Natural Disasters in the Asia Pacific through Improved Land Administration and Management" by David MITCHELL [also available as PDF](#)

There is evidence linking climate change with an increase in the frequency, severity, and unpredictability of natural disasters in the past decade. Between 1974 and 2003 there were 6,367 such destructive natural disasters, resulting in over 2 million deaths, with 75% of these in Asia alone (Guha-Sapir et al, 2004). Lessons from the 2004 Asian tsunami, recent earthquakes in India and Indonesia, and tropical cyclones in the Philippines and Samoa have highlighted the significant land issues that can arise in the aftermath of the natural disaster. This includes people losing access to land through resettlement, and land grabbing causing loss of connection with pre-disaster sources of livelihood. Since the Asian tsunami there has been extensive analysis of the approaches taken to address these land issues after natural disasters, and the literature contains several case studies and comprehensive reports from international agencies providing guidelines for addressing land issues after natural disasters.

This paper concentrates on issues in developing countries in the Asia Pacific and draws on the lessons from recent major disasters and also existing literature on land issues. Coastal communities are often at greatest risk of these events and it is often the poor sections of the community who occupy land at greatest risk. The paper also refers to the links between community vulnerability and tenure security.

[Geoserver for the masses](#) by Ragnvald Larsen – PDF [download](#)

Source: Tanzania GIS Users Group

## Books and Journals (including Videos and Web publications)

### [SERVIR-Africa community news](#)

SERVIR is developing an integrated platform for data and service discovery, acquisition, sharing, and use. For more information on platform development phasing and schedule, contact the [SERVIR-Africa Web Team](#).

### [The Mother Pelican Journal of Sustainable Development](#)

The October 2010 issue is available

### [New social atlas of Nigeria - Online](#)

For the first time, members of the public can now go to a website and online atlas and find out for instance to what extent students in their area are likely to be dissatisfied with the quality of teaching at school; in which areas private, public or even religious hospitals are more or less likely to be used; the extent to which people fear crime in different areas and lots more. In addition, users can unlock greater insight from their own data by coding their own user or client database with the corresponding geodemographic typologies (like Conventional Green Towns, Labouring Diluted Societies or Affluent Urban Nodes) of the residential Local Government Areas (LGAs) of their clients and service users.

A researcher at the University of Sheffield has created a new online atlas which depicts Nigeria by its socio-demographic, economic and environmental information on a local level in the country.

For further information, contact: [Dr Adegbola Ojo](#), University of Sheffield Department of Geography Sheffield S10 2TN, United Kingdom, phone: +44-(0)7862244758. Contact [website](#). NIG ECS [website](#).

Source: SDI-Africa newsletter and University of Sheffield [media release](#).

### [Spatially Enabling Society: Research, Emerging Trends and Critical Assessment](#)

by Abbas Rajabifard, Joep Cromptvoets, Mohsen Kalantari, & Bas Kok (editors), Leuven University Press, 2010, ISBN 978 90 5867 851 5

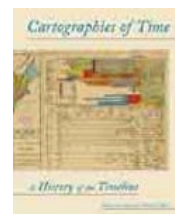
This collection of refereed papers delivered at the GSDI 12 World Conference, Singapore was launched at GSDI 12.

### [International Cartographic Association](#) website

### [UN-Spider, September issue](#) website. Also available as [PDF](#) download.

### [Cartographies of Time: A History of the Timeline](#) (2010) by Anthony Grafton, Daniel Rosenberg

This book is the first comprehensive history of graphic representations of time in Europe and the United States from 1450 to the present.



### [OpenStreetMap: Using and Enhancing the Free Map of the World](#) (2010) by Frederik Ramm, Jochen Topf

This book looks at OpenStreetMap (OSM), the web-based editable map of the world that enables people to freely view, edit, and use geographical data in a collaborative way from anywhere on the Earth.

### [Modeling Our World - The ESRI Guide to Geodatabase Concepts](#) review by Jeff Thurston (V1 Magazine)

This book originally appeared in 1999 and has been updated and re-written a decade later. Geographic information system (GIS) modeling is the key to understanding GIS – and how to communicate to others about the world we live in through mapping and cartography. The information and knowledge included in 'Modeling Our World' is the foundation for understanding ArcGIS and geodatabase concepts. Many of the descriptions and concepts in this book apply to all GIS.

### [THEORISING DEVELOPMENT AND TECHNOLOGICAL CHANGE](#)

Call for papers for the special issue of the [Information Systems Journal](#)

Deadline for Submitting Papers 28th February 2011

- \* Review Results Due to Authors: 1st June 2011
- \* Deadline for Revised Paper Submission: 1st September 2011
- \* Second Review Results Due to Authors: 1st December 2011
- \* Final Decision on Papers: 16th February 2012

[Author's Guidelines](#)

[Back to contents](#)





Guest Editor: [Dr Niall Hayes](#), Organisation, Work and Technology, Lancaster University. Lancaster, Lancashire, LA14YX, UK [Email](#).

[Back to contents](#)

## Just for Fun!

### [Map pinpoints cigarette's origin and expansion](#)

Using web tools including Google Maps, Stanford anthropologist Matthew Kohrman has plotted the international whereabouts of more than 300 cigarette factories so far. Their names, addresses and some information about the plants can now easily be found, thanks to Kohrman's Cigarette Citadels project.

...

The goal of the project is neither to agitate nor defend, he said. The point of the project is to share information that he hopes will motivate people to think in new ways.

Source: [Geospatial World Weekly](#) and Stanford University News

### [Google Cars Drive Themselves, in Traffic](#)

Anyone driving the twists of Highway 1 between San Francisco and Los Angeles recently may have glimpsed a Toyota Prius with a curious funnel-like cylinder on the roof. Harder to notice was that the person at the wheel was not actually driving.

The car is a project of Google, which has been working in secret but in plain view on vehicles that can drive themselves, using artificial-intelligence software that can sense anything near the car and mimic the decisions made by a human driver

Source: New York Times

### [The Geo Smart Car](#)

Smart USA, distributors of the Smart Car, are packaging a few geo-flavored full vehicle wrap designs to help customize the car. While these two images only represent a map and topo look, the company also promises to create any pattern of your design or choosing. The wraps are made of 3M vinyl products that come with a 3-year warranty, with prices for this custom touch starting at \$1,350.

Source: Spatial Sustain blog



### [Google Earth gets kite power](#)

Google is taking the help of a small orange kite to capture some of the remote regions featured on its Google Earth application. Husband and wife Frank and Karen Taylor, on a five-year odyssey, around the world, is taking the aerial images of coastal regions with their home-made kite on behalf of the Google, which has traditionally used satellite images on its maps. Read more at the Taylors [blog site](#).

Source: Sydney Morning Herald & [Geospatial World Weekly](#) (October 18)

### [Typographic Maps](#)



[Back to contents](#)



[Axis Maps](#) is pleased to announce the release of their **mapping / art project Typographic Maps**. Created as a labor of love, these unique maps accurately depict the streets and highways, parks, neighborhoods, coastlines, and physical features of the city using **nothing but type**. Only by manually weaving together thousands upon thousands of carefully placed words does the full picture of the city emerge. Every single piece of type was manually placed, a process that took hundreds of hours to complete for each map. Take a look at their [blog](#) for more on how these maps were made.

Source: [V1 Newsletter](#)



### [MapWarper](#)

Find maps and other imagery, upload, and rectify against a real map. You can then download and use the rectified map in your mapping applications. Just sign up and you can start uploading and get warping!

#### **What is it?**

Inspired by Metacarta's Map Rectifier, this is an open source map warping / geo rectifying service, written in Ruby and Rails. Tim Waters customised it with the OpenStreetMap project in mind. It's MIT licenced, so you can play with it if you want too!.

It's a free to use, open source map warper / map georectifier, it's a bit unstable! This project is supported by [Entropy Free](#) and the [New York Public Library](#).

Source: [V1 Newsletter](#)

[Back to contents](#)

## Training Opportunities

### [Standards Based Frameworks to Underpin Linked Information Sharing Networks Workshop](#)

Information sharing networks are increasingly being funded as part of either specific government initiatives (e.g. Improving Water Information Program, National Plan for Environment Information, Australian Oceans Data Network) or the broader National Collaborative Research Infrastructure Strategy (e.g. TERN Eco-informatics, Atlas of Living Australia, AuScope Grid, e-Marine Information Infrastructure).

**Date:** 05.11.2010

**Hosted by:** [Office of Spatial Data Management](#), [CSIRO Land & Water](#) and the [Australian National Data Service](#)

**Time:** 9.00am to 12.30pm  
Further Information [here](#)

Source: OSDM

### [3rd Annual Spatial Ontology Community of Practice Workshop](#)

Invitation - 3rd Annual Spatial Ontology Community of Practice (SOCoP) Workshop: Development, Implementation and Use of GeoSpatial Ontologies and Semantics  
U.S. Geological Survey (USGS) National Center, reston, Virginia, USA

**Friday December 3, 2010 from 9:00 AM - 3:00 PM**

The purpose of the workshop is to continue the discussion from the previous SCoP < <http://www.socop.org> > workshops in advancing spatial ontologies and semantic tools in the geospatial data domain. The main theme of this 3rd iteration of the workshop is the current and future state of development, implementation, and use of geospatial semantics and ontologies in meeting organizational mission and program needs. There is no charge for the workshop.

Proceedings from last year's Workshop complete with presentation slides and audio are available at < [http://ontology.cim3.net/cgi-bin/wiki.pl?SOCoP/Workshop\\_2009\\_11\\_12](http://ontology.cim3.net/cgi-bin/wiki.pl?SOCoP/Workshop_2009_11_12) >, thanks to the support of Ontolog.

### [Tanzania: 2010 Skills conference](#), Arusha, Tanzania

The GIS courses listed in the announcement would be really good for anyone interested in mapping, particularly from a FOSS (Free and Open-Source Software) background. The instructors will be covering elements of mapping and using GPS units, putting the geographic data onto maps, \*making\* maps to present information, and many other topics. The software that mostly will be used is QGIS, < <http://qgis.org/> >, together with some other packages.

[Back to contents](#)

### **29 Nov - 1 Dec Introduction to GIS** (Paul Bessels, Uni. of Glasgow)

Elements of GIS, creation of maps & intergration of GPS data, spatial analysis. Focusing on QGIS (a free GIS package), this 3 day course will give practical skills in creating maps, understanding cartographic concepts, and basic analysis. \$100 for sponsored attendees, \$30 for unfunded students.

### **2 - 4 Dec Repeat of Introduction to GIS** (above)

### **6 - 8 Dec Primer on Distance sampling** (Len Thomas, Uni. of St. Andrews)

Target audience: Any wildlife biologist who wants to design, collect or analyze distance sampling survey data. The emphasis of the workshop will be on how to design a good survey, how to collect good data and how to do preliminary analyses using pen and paper, a calculator and a computer spreadsheet. Complete beginners are very welcome. Those with more experience may: (i) benefit from the refresher, (ii) learn something from the detailed discussion of assumptions, how to meet them, and what happens if things go wrong, (iii) be able to use the material as a basis for teaching others. \$150

### **9-11 Dec Distance sampling survey design and analysis** (Len Thomas, Uni. of St. Andrews)

Target audience: People who are familiar with the concepts covered on the previous workshop, and who want to analyze survey data using the program Distance.

Pre-requisites: Attendance at workshop 1, or familiarity with all of the concepts covered on that workshop. \$150  
Source: TZGISUG List

### **Transparency in Land Administration - (2 weeks) - Ardhi University TANZANIA (18 – 31 November, 2010)**

Course objectives:

Transparency in land administration is a critical factor and a precondition for enhanced good governance. It is also a major step towards elimination of corruption in land administration. The objectives of this course are;

- To share innovative tools to achieve tenure security and transparency in land administration;
- To enhance participants' awareness and understanding of transparency, disclosure management and flow of information in land administration matters; and
- To inculcate knowledge on tools required to engender and operationalise and monitor transparency in land administration.

*Directions Magazine* [Webinars](#) (Web Seminars)

### **Free Upcoming Webinar on 3D City GIS**

V1 Magazine is moderating and introducing a free 3D City webinar that will take place on Wednesday, Oct. 13 at 11 am EDT. The webinar highlights the capabilities of Bentley's powerful collaboration, design, and analysis functionality coupled with Oracle's robust 3D data storage in Oracle Spatial 11g.

### **OpenGeo Releases Training Courses Under Creative Commons**

At the Free and Open Source Software for Geospatial (FOSS4G) conference in Barcelona this past week, OpenGeo announced the availability of its training materials online, licensed under the Creative Commons Share-Alike With Attribution license. Introductory workshops on the PostGIS spatial database, OpenLayers web mapping library, and the GeoServer map and feature server are all available [online](#).

**Vexcel Imaging Web Events (Webinars)** - including past webinars

[Back to contents](#)

## Funding Opportunities, Awards, Grants

### **Ashoka's Changemakers Award for Property Rights - call for proposals**

Omidyar Network and Ashoka's Changemakers invite proposals for a \$50,000 Award for Property Rights: Identity, Dignity & Opportunity for All. Secure rights to land can provide life-altering benefits to the poor, including economic opportunity, enhanced identity, and personal dignity. If you are a changemaker who is increasing access to property rights—for individuals or communities, in rural or urban areas, through non-profit or for-profit innovation—Changemakers want to hear from you.

Changemakers seeks diverse approaches and groundbreaking models to strengthening property rights. From August 18 through November 3, 2010, you can nominate or submit a solution that helps to provide land to the landless, formalizes or documents property rights, or provides legal education to help people understand and benefit from the laws that protect their assets.

[Back to contents](#)

Prizes: Three winners will be selected; each will receive a cash prize of US \$50,000.

**Deadline: November 3, 2010**

### [Trimble Student Paper Competition for Surveying](#)

The announcement of the winner will be September 22nd, 2010.

### [Best Student Paper Awards](#) Nanjing, China – May 26-9, 2011 see under “[Conferences, Events](#)”

A Student Paper Prize Competition will be held during **LIDAR & RADAR 2011**. It is a great opportunity for young researchers to expose their work in this event and be recognized for their scientific value. Any student willing to be considered for this competition is required:

- ▶ to submit an abstract before 30 November 2010, indicating that he/she is willing to participate to the student competition. The abstract must have the name of the student as the first author.
- ▶ to submit the full paper and an electronic copy of a certificate showing his/her student status by e-mail to [lidar2011@gmail.com](mailto:lidar2011@gmail.com) no later than 30 January 2011.
- ▶ to present the paper at the conference, if the paper is accepted and included in this session.

The **Best Student Paper Award** with a value of \$100 will recognize the best paper submitted by a student. Only papers submitted on or before the Proceedings submission deadline will be considered for these awards.

### [Bentley's 2011 Student Design Competition Call for Submissions Now Open](#)

The Bentley Student Design Competition is now accepting nominations for 2011. Students or teams (not to exceed 3 team members) may nominate their project in one of the categories, at their scholastic level, listed on the Bentley [website](#).

**The deadline is March 18, 2011.**

[Back to contents](#)

## Employment Opportunities

### [GIS Analyst is one of the best jobs](#)

Recently, CNN Money.com published an article, Best Jobs in America. And, it provided a cheerful moment for geospatial industry because GIS Analyst job, for the first time, could mark the presence in CNN's top 100. It was at 97th position.

Source: GeoSpatial World [blog](#) by Anand Kashyap

see also [How can GIS Analyst be a least stressful job?](#) At the Spatial Sustain blog

[Spatial Jobs Online \(Australia\)](#) Because of tight application closing dates the editors provide these websites for employment seekers to access directly: < <http://www.spatialjobs.com.au/> > and < <http://www.GISjobs.com.au> >

### [Looking for a GIS - Geomatics Job in Canada?](#)

Here are some links: 1) [Geomatics Canada Job Site](#); 2) [GeographyJobs.ca](#); 3) [GoGeomatics Canada](#); 4) [Geomatics Employment Center](#)

Source: V1 Magazine

[Back to contents](#)

## Conference Proceedings



### [Photographs from GSDI 12 are on-line here and here](#)



The [Presentations and Proceedings](#) from GSDI 12 are available from the Conference [website](#)

### [The first Latin American Remote Sensing Week \(LARS\) at Santiago de Chile](#)

[Back to contents](#)

### [Xth International Scientific and Technical Conference “From Imagery to Map: Digital Photogrammetric Technologies”](#)

#### [United Nations Regional Seminar on Census Data Dissemination and Spatial Analysis,](#)

Bangkok, Thailand, 5-8 October 2010

The United Nations Statistics Division (UNSD), in cooperation with the United Nations Economic and Social Commission for Asia and the Pacific (UNESCAP), organized the Regional Seminar on Census Data Dissemination and Spatial Analysis in the context of the 2010 World Programme for Population and Housing Censuses.

The purpose of the Seminar was to provide a forum for sharing national practices and experiences in the dissemination and use of census data. The Seminar reviewed emerging trends, innovative approaches and technological tools employed in the dissemination of census data. The Seminar was expected to provide a basis for assessing existing national dissemination strategies as well as technologies used by national statistical offices. It also was meant to aid in taking stock of national capacities and challenges for meeting the increasing requirements of census data users. Furthermore, the Seminar was expected to help in identifying good practices and lessons learned in the dissemination and analysis of census data. The ideas generated by the discussion and the recommendations made by participants will contribute towards the drafting of an international guideline for effective dissemination and utilization of census data.

Contact: Margaret Mbogoni, Tel. +1 212 963 7845, e-mail: [Mbogoni@un.org](mailto:Mbogoni@un.org)

Source: Kate Lance

#### [Hindu Kush-Himalayan region: bridging the data gap for adaptation to climate change](#)

The recently held International Symposium "Benefiting from Earth Observation: Bridging the Data Gap for Adaptation to Climate Change in the Hindu Kush-Himalayan Region", (Kathmandu, Nepal, 1-7 October 2010) provided the region with a key opportunity to advance in sustainable development and international cooperation. The full proceedings of the symposium will be available soon.

If you have any queries, contact [symposium2010@icimod.org](mailto:symposium2010@icimod.org)

Symposium [blog](#) and Symposium [twitter](#).

The Symposium also marked the launch of [SERVIR-Himalaya](#). In 2010, in a move that is furthering GEOSS in action, the US Agency for International Development (USAID) and the National Aeronautics and Space Administration (NASA) partnered with ICIMOD to establish SERVIR-Himalaya--the third regional SERVIR node.

Source: Kate Lance

#### [The United Nations Regional Seminar on Census Data Dissemination and Spatial Analysis,](#)

Nairobi 14-17 September 2010.

The purpose of the Seminar was to provide a forum for sharing national practices and experiences in the dissemination and use of census data. The Seminar reviewed emerging trends, innovative approaches and technological tools employed in the dissemination of census data. The Seminar was expected to provide a basis for assessing existing national dissemination strategies as well as technologies used by national statistical offices. It also was meant to aid in taking stock of national capacities and challenges for meeting the increasing requirements of census data users. Furthermore, the Seminar was expected to help in identifying good practices and lessons learned in the dissemination and analysis of census data. The ideas generated by the discussion and the recommendations made by participants will contribute towards the drafting of an international guideline for effective dissemination and utilization of census data.

Contact: Yacob Zewoldi, Tel. +1 212 963 0445, e-mail: [zewoldi@un.org](mailto:zewoldi@un.org)

Source: Kate Lance

**United Nations [workshops](#)** - Demographic and social statistics

[GeoViz 2009 \(Hamburg, March 2 -5, 2009\)](#)

[The Australian and New Zealand Map Society Conference 2010](#)

[Map Asia 2010](#) and [Conference Report](#)

[\(GITA\) Australia-New Zealand](#) - Brisbane, Australia from 2-4 August 2010

[Back to contents](#)



[15th Australasian Remote Sensing and Photogrammetry Conference](#) (Alice Springs, September 13 -17)

## Conferences, Events

For upcoming events of global or major international interest, please visit the [upcoming conference list](#) on the GSDI website.

**The editors welcome news of conferences & events from the newsletter subscribers**

Date	Location	Event
<b>November 2010</b>		
<b>31 October - 3 November</b>	Denver, Colorado	<a href="#">US - GSA Annual Meeting</a>
<b>3-4 November</b>	Berlin, Germany	<a href="#">5th 3D Geoinfo Conference</a>
<b>5 – 6 November</b>	Kaohsiung, Taipei	<a href="#">ASIA GIS 2010</a> <a href="#">Contact us</a> The theme for this conference is <b>GIS and Cloud Computing</b> . Cloud computing is a hot topic in 2010 and GIS is moving to the cloud computing paradigm. Invited keynote speakers will present the future trend of cloud computing and its application in GIS. <b>Key Dates:</b> Deadline for Early Bird Registration 31 August Paper Submission 31 August
<b>8 – 11 November</b>	London	<a href="#">The 5th International Conference for Internet Technology and Secured Transactions (ICITST-2010)</a> Technical Co-Sponsored by IEEE UK/RI Communications Chapter, <a href="#">Contact</a> <b>IMPORTANT DATES</b> Early Registration Deadline: January 01 to July 31, 2010 Late Registration Deadline: July 31 to November 08, 2010
<b>9 – 11 November</b>	Taipei, Taiwan	<a href="#">2010 The 7th International Symposium on Cadastral Survey</a> . Main Topic: The Development of Cadastral Survey in New Generation. Contacts: Geographic Information Systems Research Center of Feng Chia University. Email: <a href="mailto:joy@gis.tw">joy@gis.tw</a>
<b>11-13 November "NEW"</b>	Madrid, Spain	<a href="#">SECOND INTERNATIONAL CONFERENCE ON SCIENCE IN SOCIETY 2010</a> <a href="#">Contact</a>
<b>15 – 19 November</b>	Orlando, Florida	<a href="#">ASPRS/CaGIS 2010 Specialty Conference</a> in conjunction with a special joint meeting of ISPRS Technical Commission IV & AutoCarta 2010 <b>Important Dates</b> May 1, 2010 - Workshop proposals due May 12, 2010 - Abstracts for papers and posters due June 15, 2010 - Notice of acceptance of all proposals August 15, 2010 - Presenter registration due September 13, 2010 - Final papers due (to be considered for publication)
<b>23 – 25 November</b>	Cape Town, South Africa	<a href="#">Map Africa 2010</a>
<b>November - Dec 2010</b>		
<b>23 – 26 November</b>	Melbourne, Australia	<a href="#">17th Asia Pacific Regional Space Agency Forum</a>

23-26 November <b>"NEW"</b>	Suva, Fiji	<a href="#">Pacific GIS and RS User Conference</a> <a href="#">Contact</a> Theme: <b>You cannot manage what you don't map</b> <b>2nd November Deadline for Abstracts</b>
28 November – 3 December	Sydney Australia	<a href="#">OGC's Meeting on Business Value of Geospatial Standards</a> The Open Geospatial Consortium (OGC) has announced the event, Deriving business value from geospatial standards to be held on June 17, 2010 at the NOAA Silver Spring offices in Maryland. OGC invites government officials, policy makers, senior managers, as well as sales and marketing professionals from across the industry to attend a series of business meetings during the event. The event is part of the OGC's quarterly Technical Committee and Planning Committee meetings. Steven Ramage, OGC's Executive Director, Marketing and Communications said, "I would like to invite professionals to attend a one-day business session at a TC/PC meeting. This invitation is open to OGC members and non-OGC members who want to learn more about the business value of geospatial technology. Silver Spring is the first such meeting and more one-day business sessions are planned for the OGC meetings in Toulouse, France in September and in <b>Sydney, Australia in November-December 2010.</b> "
29 November – 3 December	Tunisia	<a href="#">Fifth Session of the International Conference Geotunis 2010</a>
30 November – 1 December	The Hague, Netherlands	<a href="#">European LiDAR Mapping Forum Conference and Exhibition</a>
<b>December 2010</b>		
1 – 3 December	Valencia, Spain	<a href="#">6th gvSIG Conference: Knowledge for change</a> The call for papers is now open. As of today communication proposals can be sent to the <a href="#">email address</a> where they will be evaluated by the scientific committee as to their inclusion in the conference program. There are two types of communication: paper or poster. Information regarding to regulations on communication presentations can be found in the <a href="#">reports section</a> . Abstracts will be accepted until September 21st.
22 December <b>January 2011</b>	Kyoto, Japan	<a href="#">Japan - Topic Maps Japan 2010</a>
5 – 7 January <b>"NEW"</b>	University of Waikato, New Zealand	<a href="#">SEVENTH INTERNATIONAL CONFERENCE ON ENVIRONMENTAL, CULTURAL, ECONOMIC AND SOCIAL SUSTAINABILITY</a> <a href="#">Contact</a>
18-21 January	Hyderabad, India	<a href="#">MapWorld Forum 2011</a> <a href="#">Contact</a> <b>NOTE NAME CHANGE TO:</b> <a href="#">GEOSPATIAL WORLD FORUM 2011</a> Last date for <a href="#">abstract submission</a> has been extended to 30th September, 2010
<b>February 2011</b>		
7 – 9 February	New Orleans, USA	<a href="#">11th International LiDAR Mapping Forum 2011</a>
<b>March 2011</b>		
7 – 9 March <b>"NEW"</b>	Valencia, SPAIN	<a href="#">5th International Technology, Education and Development Conference (INTED2011)</a> <b>Abstract submission:</b> 25th November 2010 <b>Acceptance notification:</b> 16th December 2010 <b>Final Paper submission:</b> 26th January 2011 <a href="#">Contact</a>

<b>21 – 4 March</b>  “NEW”	Houston, USA	<a href="#">SPAR International 2011</a> Contact: <a href="#">Linda McLaughlin</a> , Program Manager <a href="#">Call for Presenters</a> , <b>ABSTRACT SUBMISSION DEADLINE</b> November 3, 2010
<b>25 – 7 March</b>  “NEW”	Bilbao, Vizcaya, Spain	<a href="#">7th International Conference on Technology, Knowledge and Society</a> The deadline for the current round in the <i>Call for Papers</i> is <b>9 November 2010</b> <a href="#">Contact</a>
<b>April 2011</b>		
<b>10 – 15 April</b>	Sydney, Australia	<a href="#">34th International Symposium on Remote Sensing of Environment</a> (ISRSE) <b>Abstract submissions close on 1 October</b>
<b>May 2011</b>		
<b>3 – 8 May</b>  “NEW”	Antalya, Turkey	<a href="#">Gi4DM 2011 – GeoInformation for Disaster Management</a> . <a href="#">Contact</a> Deadline for Abstracts is <b>December 15, 2010</b> <a href="#">Online Abstract Submission</a> Full papers for Proceedings are required by <b>March 31, 2011</b>
<b>26 – 29 May</b>	Nanjing, CHINA,	<a href="#">LIDAR and Radar Mapping: Technologies and Applications</a> Abstract submission deadline October 15, 2010 Authors notified on November 30, 2010 Full paper submission deadline January 30, 2011 <a href="#">Contact</a>
<b>June 2011</b>		
<b>28 June - 7 July</b>  “NEW”	Melbourne, Australia	<a href="#">XXV IUGG General Assembly</a> <b>Earth on the Edge: Science for a sustainable Planet</b> The IUGG 2011 Scientific Program Committee invites the submission of abstracts on original work to be considered for oral or poster presentation at the IUGG 2011 General Assembly. The deadline for submission of abstracts is <b>Monday 17 January 2011</b> . <b>Call for Abstracts Close FOR IAHS PREPUBLISHED EVENTS</b> JH01, JH02, H01, H02, H03 and H04 <b>8 November, 2010</b> <a href="#">Contact</a> <a href="#">Download Brochure</a>
<b>28 June - 7 July</b>  “NEW”	Melbourne, Australia	<a href="#">IAG General Assembly</a>  <a href="#">Download Brochure</a>
<b>July 2011</b>		
<b>3 - 8 July</b>	Paris	<a href="#">25th International Cartographic Conference</a> . <b>15th General Assembly of the International Cartographic Association (ICA)</b> Abstracts were due 4th October, 2010. <a href="#">Second call for papers</a> Contact: <a href="mailto:regist-icc2011@europa-organisation.com">regist-icc2011@europa-organisation.com</a>
<b>9 – 12 July</b>	San Diego	<a href="#">Esri and ACSM - Event for Surveyors and Mapping Professionals</a> <b>Abstract submission deadline is December 6, 2010.</b>
<b>9 – 12 July</b>	San Diego	<a href="#">ESRI International USER CONFERENCE</a>
<b>August 2011</b>		
<b>23 – 25 August</b>	Perth, Australia	<a href="#">7th International Symposium on Digital Earth</a> (ISDE7) Held in conjunction with <a href="#">WALIS Forum 2011</a> and the <b>2011 NRM Conference</b>
<b>November 2011</b>		
<b>14 – 18 November</b>	Santiago, Chile	<a href="#">UGI 2001 International Geographic Union “Regional Geographic Conference”</a> <a href="#">Contact</a> <a href="#">Brochure &amp; Call for Papers</a>

<b>21 – 23 November</b> <b>“NEW”</b>	Wellington, New Zealand	<a href="#"><u>Surveying &amp; Spatial Sciences Conference 2011</u></a>
<b>May 2012</b>		
<b>May</b> <b>“NEW”</b>	Quebec City, Canada	<b>GSDI 13</b>
<b>August 2012</b>		
<b>25 August – 1 September</b>	Melbourne, Australia	<a href="#"><u>XXII International Society for Photogrammetry &amp; Remote Sensing Congress</u></a> Email: <a href="mailto:isprs2012@icms.com.au">isprs2012@icms.com.au</a>
<b>2014</b>		
	Malaysia	Malaysia will be hosting the (International Federation of Surveyors) FIG Congress in 2014. The decision was taken at the recently concluded FIG Congress 2010 in Sydney, Australia.

[Back to contents](#)

To subscribe to SDI-AP, please do so [online](#). To contact please [email](#) the editors.  
[Global Spatial Data Infrastructure Association](#).

Please mention SDI-AP as a source of information in any correspondence you may have about items in this issue.

**DISCLAIMER:** The Editor and Web Host will not be held liable for any errors, mistakes, misprints or incorrect information.

Copyright © 2010. All rights reserved.



[Back to contents](#)