

Spatial Data Infrastructure – Asia and the Pacific (SDI-AP) is a free electronic newsletter from the [Global Spatial Data Infrastructure Association \(GSDI\)](#) and is available in both English and Chinese language versions. The newsletter is produced for people interested in Spatial Data Infrastructure, GIS, remote sensing, and geospatial data issues in Asia and the Pacific. It aims to raise awareness and provide useful information to strengthen SDI initiatives and support the synchronisation of activities across the region. Support for the newsletter is also provided by the [Permanent Committee on Geographic Information for Asia and the Pacific \(PCGIAP\)](#), a regional forum to enhance cooperation in the development of a regional geographic information infrastructure. The newsletter is currently being produced for GSDI by the [Centre for Spatial Data Infrastructures and Land Administration](#) at the University of Melbourne.



To subscribe to SDI-AP use [this link](#). Back issues of the newsletter are at the [GSDI website](#). You can also sign up for [GSDI News List](#) to receive alerts of special news and announcements as well as notification of new issues of the SDI-AP newsletter. To subscribe to, and access archives of, thematic or regional discussion lists [please visit](#).

Contents

Message from the editor	1
Contributions	2
SDI News, Links, Papers, Presentations	2
SDI Spotlight	4
GIS Tools, Software, Data	5
News from abroad	8
Articles	10
Books and Journals	11
Just for Fun !	11
Training Opportunities	12
Funding Opportunities, Awards, Grants	16
Employment Opportunities	17
Conference Proceedings	17
Conferences, Events	17

Message from the editor

Welcome to the March edition of the newsletter.

Following the January earthquake in Haiti we have just learned of the Chilean earthquake and the coming months should demonstrate the utility of SDI in providing assistance to this major disaster area.

Please note that the GSDI organization is currently planning for the GSDI conference and are currently calling for Workshop and Tutorials - further information is available from [the GSDI website](#) & the Conference, Events section of the Contents of this newsletter.

If you have news or information related to SDI, GIS, RS or spatial data that you would like to share with the community (e.g. workshop announcements, publications, reports, websites of interest etc.), [kindly send us the materials by the 25th of the each month](#) for your contribution to be included in the next newsletter.

Malcolm Park and Serryn Eagleson ([Editors](#)), at the [Centre for Spatial Data Infrastructures and Land Administration](#), The University of Melbourne.

[Back to contents](#)

Contributions

Thank you to the following people and organisations for their contributions to this issue:

Paul Box, Kate Lance, and Baek Wonkug for news feeds, Jeremy Shen & Jeremy Huang for the Chinese translation, and Shivani Lal, *GIS Development, Asia Surveying Mapping Magazine* for directly feeding into the newsletter.

[Back to contents](#)

SDI News, Links, Papers, Presentations

[SDI: How We Get There](#)

In previous editions of Davids blog he has covered what Spatial Data Infrastructure (SDI) is in a New Zealand context and what some of the impacts will be for agencies wanting to participate in it. Now, let's take a look at what we've been doing to establish SDI, how it might function, and what a roadmap for a healthy SDI looks like. In this article David elaborates on what the NZGO has been doing and what an SDI roadmap looks like.

Source: Blog produced By David Swann via the NewZealand Geospatial Strategy Website

[AUGMENTED-REALITY MAPPING – seeing is believing!](#)

Your opportunity to be present at the Creation In a demonstration that drew gasps at TED2010, Blaise Agüera y Arcas demonstrates new augmented-reality mapping technology from Microsoft.

Watch this 8 minute video and see the future of Google Streetview & MicroSoft Bing Maps Blaise Agüera y Arcas is the architect of Bing Maps at Microsoft, building augmented reality into searchable maps.

Source: [The Believer blog](#) & [GIS Development \(February 22\)](#)

More on Augmented reality courtesy of [Asian Surveying & Mapping](#)

[OGC & WMO cooperate on geospatial standards](#)

The Open Geospatial Consortium, Inc. (OGC®) and the World Meteorological Organization (WMO) have signed a Memorandum of Understanding (MoU) to enhance the development and use of geospatial standards. It is anticipated that this collaboration will support the implementation of the WMO Information System which aims at providing a single coordinated global infrastructure for the collection and sharing of information in support of all WMO and related international programs. The MoU formalizes the partners' planned collaboration in the development, application, and promotion of standards and best practices for the content and exchange of meteorological, climatological and hydrological data for the benefit of the worldwide scientific and operational communities of meteorologists and hydrologists.

Source: [OGC press release](#)

[A Guide to Developing Data Access Policies](#)

The [Geospatial Administrators Association of South Carolina](#) has published a guide to help local governments, as well as all other levels of government and the private sector, develop and implement GIS data access policies. The guide - [A Process Framework for Developing Local Government Data Access Policies](#) (PDF) -- serves as a process framework for developing an effective GIS data access policy. GIS managers can use this framework to help decision makers understand and formulate a GIS data access policy for their entire organization. Its process encourages decision makers to review options for data distribution and carefully consider how implementing a policy will impact the organization, staff, private citizens, the business community, and other government agencies.

Source: Wonkug Baek

[Asian Countries Take Part in NASA-led Environmental Project](#)

Southeast Asian countries are taking part in a four-year research program to monitor environmental quality in the South China Sea. The program will install NASA equipment monitor atmospheric chemicals and global climate changes. This project is specifically important as it incorporates Taiwanese researchers, along with research teams from the U.S. and Southeast Asian countries, each collecting and monitoring background air quality data. "This is the first time that Taiwan has joined a NASA-organized international cooperative project to monitor environmental quality in the South China Sea," (Taiwan News) The project is expected to help upgrade

[Back to contents](#)

Taiwan's environmental monitoring capability and documentation technology and facilitate the integration of Taiwan's environmental data into international databanks.

Source: Asian Surveying & Mapping and [Taiwan news](#)

[Has Haiti Exposed Asian Land Management Needs?](#)

A Taiwan News article describes how unregulated construction has contributed toward the amount and types of earthquake damage in that country. This raises similar issues across Asia where a high occurrence of earthquake related activity is present. Can surveying and land management play a role toward mitigating these impacts?

Source: [Asian Surveying & Mapping](#) & Taiwan News

[Call for Australia to seize title of world leader in spatial](#)

Australia is uniquely placed to step up and secure the title of world leader in global spatial technology said Paul Farrell, the newly elected Chairman of peak industry body the Spatial Industries Business Association (SIBA) and Managing Director of NGIS Australia. "We need to raise our eyes beyond our borders and tell the world about our industry, and our effort needs to be coordinated, supported and tightly targeted using the pillars of our industry," he said.

Source: GISLounge

[New satellite maps of Haiti coming in](#)

As rescue workers scramble to provide assistance to hundreds of thousands of people following Haiti's earthquake, Earth observation satellite data continues to provide updated views of the situation on the ground. Following the 7.0-magnitude earthquake that hit Haiti on 12 January, international agencies requested satellite data of the area from the International Charter on 'Space and Major Disasters'. The Charter, an international initiative aimed at providing satellite data free of charge to those affected by disasters anywhere in the world, immediately began re-tasking their satellites to get the data urgently needed. Data are being collected by various satellites including Japan's ALOS, CNES's Spot-5, the U.S.'s WorldView and QuickBird, Canada's RADARSAT-2, China's HJ-1-A/B and ESA's ERS-2 and Envisat. These data are being processed into maps that show the degree of destruction. As soon as new data arrives, updated maps will be produced and made available to the international community. The updates may be accessed by clicking on the links on the right. Other satellite missions that are complementing those from the Charter include Germany's TerraSAR-X, Italy's COSMO-SkyMed, South Korea's KOMPSAT-2 and the U.S.-based GeoEye-1.

Source: European Space Agency News

[Indonesian forests expand but doubt on image analysis](#)

The Forestry Ministry of Jakarta, Indonesia, claims that Jakarta's total forested area has increased to 134 million hectares from the previous figure of 120 million hectares. The ministry's head of research and development, Tachrir Fathoni, said that the figure was based on analysis of Landsat satellite images from 2009, according to *the Jakarta Post* report.

Fathoni said, "We'll publish the new data in the official forestry statistics." This new figure can make Indonesia the world's second-largest forest nation which is currently occupied by the Democratic Republic of Congo with 133 million hectares, behind Brazil with 415 million hectares. Tachrir also said that many officials within the Forestry Ministry had questioned the veracity of the data, given the country's high rate of deforestation, in excess of 1 million hectares a year.

Source: [GIS News](#) & The Jakarta Post

[Help LINZ Improve its Bulk Data](#)

At Land Information New Zealand (LINZ), are keen to unlock the value of our geospatial data. As part of this, they have created an online questionnaire that asks how we can improve our survey and title bulk data products and services. Information gathered from the questionnaire will help better understand what users of the data need in order to get the most out of it, and how we can therefore support the development of New Zealand's geospatial sector and contribute more to the economy. [Register for the questionnaire](#) and let us know what you think of our bulk survey and title data products and services - it shouldn't take longer than 15 minutes to complete. The questionnaire will be open until midnight on 5 March 2010.

Source: New Zealand Geospatial Strategy Website

SDI Spotlight

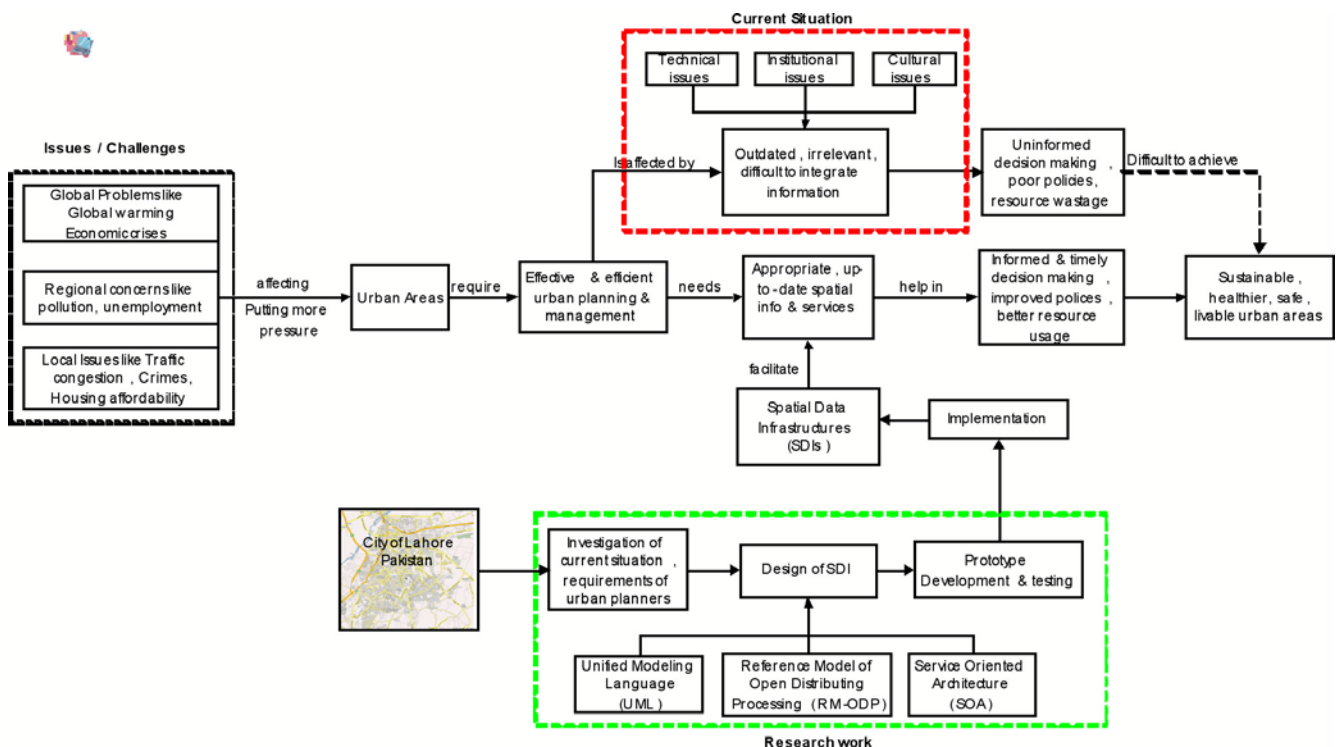
This month's Spotlight feature is by [Faisal Qureshi](#), a PhD in the University of Melbourne's CSDILA.

Spatial Data Infrastructures (SDI) Design for Informed Decision Making in Urban Planning

Urban proportion of the world population has quadrupled in the last one century. This high rate of urbanization has increased the responsibility of urban planners and decision makers to provide for a better living environment by affectively & efficiently managing complex problems like housing affordability, traffic congestion, crimes, pollution, and environment degradation etc. Urban planning process begins with the investigation of prevailing problems by analysing information. Better information means better problem analysis and better solution. Urban planning being a multidisciplinary field relies heavily on information regarding land-use, demography, socio-economic and build environment etc.

Most of the information needed by urban planners is available within other departments. In certain situation, available information is in such a format that it is difficult to use it immediately without processing it. Sometimes planners are even unaware about its availability. In some cases, this information is in the minds of experts gained through experience, never translated into black and white and lost with their transfer. Practically it is difficult and time consuming to integrate information from different sources and levels due to various technical, cultural, political and institutional issues. In the end, information is collected again. Limited application of available information due to poor accessibility and integration means un-informed decisions or wastage of more time and resources and ultimately a delay in response. In situation like emergencies or disaster, small time difference can make a huge impact. In our daily life, similar delays and wastages of resources are unacceptable.

Advancement in information and communication technologies (ICT) and academic research have evolved tools like Spatial Data Infrastructures (SDI). Development of such a platform will assist urban planners in better accessibility and utilization of information. However, due to the dynamic nature of SDI and complexity of the urban planning discipline, design and development of such a platform at local level is a complex reality and so far most of the work is done on the conceptual side. Commission on Spatial Data Standards of the International Cartographic Association (ICA) has published only generic model for SDI. Absence of such detailed model is hampering the efforts of developing countries for SDI development.



[Back to contents](#)

Therefore this research is focused on the design of SDI mainly in urban planning domain. This model can be applied in other domains as well with little modifications. Coordinated design of such model and successful implementation in different domains will lead to a full fledged SDI. Guidelines by ICA and ISO standards forms basis of this model. Various viewpoint of Reference Model of Open Distributed Professing (RM-ODP) are being developed using Unified Modeling Language (UML). Service Oriented Architecture (SOA) theme is applied for the development of online spatial services promoting increased usage by general public, politicians and non-technical people. In order to investigate and better understand the needs and requirements, this qualitative research employed a case study approach. Metropolitan City of Lahore in Pakistan is selected as case study. A prototype is under development to highlight the importance and benefits of such a platform. Successful design and development of this model will help in fast, transparent and efficient planning process.

The editors are actively soliciting contributions to the monthly "SDI Spotlight" feature for the March and subsequent issues.

[Back to contents](#)

GIS Tools, Software, Data

[Geospatial Technology in Asian Agriculture](#)

Rice harvesting in the Mekong Delta is lower than what it could be. Only 28% of the 420,000 acres under cultivation benefit from high technology, suggesting large increases in production could be achieved with more technology input. Viet Nam Net reports that these losses reach 500,000-600,000 tons of food. The *Philippine Sun Star* recently pointed to the fact that Mindanao was basing its topographic maps on aerial photographic data collected between 1947-53. At a time when several satellites circle the planet providing high-resolution data, daily in some cases, such cases of outdated information raises questions.

Source: Asian Surveying & Mapping



[The Land Change Modeler from Clark Labs Gets Support from Google.org](#)

Google.org has contracted with Clark Labs to adapt their [Land Change Modeler](#) application to run on the [Google Earth Engine](#) interface in order to support the evaluation and monitoring of REDD (Reduced Emissions from Deforestation and Degradation) projects. The collaboration is complimentary to the forest monitoring application that Google collaborated on with the Carnegie Institute of Science that was unveiled at the COP15 climate meeting in Copenhagen.

Source: [Vector1media](#)

[FIG - Land Acquisition in Developing Economies](#)

In the FIG Article of the Month series high-level papers focusing on interesting topics to all surveyors are published. The paper can be picked up from FIG conference or another event or the link above. The Article of the Month in February 2010 is "Land Acquisition in Developing Economies". It is written by Ms. Jude Wallace, Australia.

Source: [Asian Surveying & Mapping](#) & FIG Website

[New Zealand scientists working on disaster preparedness in the Pacific](#)

Geologists from GNS Science will spend the next six months collecting information on buildings and other infrastructure in Pacific Island countries to measure vulnerability and risk from earthquakes and cyclones in the southwest Pacific.

Source: [GIS Development](#) & [www.voxy.co.nz](#)

[Web GIS mapping service for Philippines](#)

The Philippine Chamber of Real Estate and Builders Association (CREBA) announced the deployment of first fully-automated Web GIS parcellary mapping service. Now, a piece of land in Philippines can be accurately located.

Source: Kate Lance

[Back to contents](#)

[The tallest Eucalyptus tree mapped](#) – In Tasmania, Australia

A true giant among trees—the tallest known hardwood in the world—was discovered and mapped using a combination of Lidar (light detection and ranging) and GIS. The swamp gum, a eucalyptus, was nicknamed Centurion and measured at 99.6 meters (326.8 feet) in height and 405 centimetres in diameter.

Source: [GIS News](#) & ESRI ArcWatch e-Magazine

[GIS system for New Zealand education system](#)

The Ministry of Education is proposing a GIS system to analyse school and student data.

Source: [GIS News](#) & NZ Reseller News

[Digitalisation of land records gathers pace \(India\)](#)

The ambitious project of the Indian state of Punjab of digitalisation of land records being implemented under public-private partnership paradigm and under Build, Operate, Own and Transfer (BOOT) basis has gathered

Source: [GIS Development](#) & the Financial Express

[GIS to lead education reform in Punjab, India](#)

To bring out revolutionary educational reforms in the schools, the Punjab Government (an Indian states govt) has decided to automate all functions of Government Schools in the State with an aim to develop Management Information System (MIS) and GIS for effective planning and decision-making. The main objective of building MIS and GIS systems was to monitor the delivery of education to school children and to administer and manage the internal functions of schools in an effective and efficient manner.

Source: [GIS Development](#) & Punjab Newslite

[Website to track endangered koalas](#)

A Website from Australia, <www.koaladiaries.com.au>, that lets everyone from school children to senior citizens track koalas in live time has become the latest weapon in the fight to save the furry creatures from extinction.

Source: GIS Development & [Koala Diaries website](#)



[UK-Indonesian partnership to address de-forestation](#)

British satellite imaging company DMCii welcomes International Development Secretary Douglas Alexander's announcement that the UK has joined forces with the Indonesian government to tackle deforestation and prepare Indonesians for the impacts of climate change.

Source: [DMCii Press Release](#) & GIS News

[Taiwan to use climate rainfall map system](#)

SuperGeo is developing climate rainfall map system by using SuperWebGIS. The new WebGIS platform will be used by Taiwan Central Weather Bureau to centrally manage and conveniently display the rainfall data.

Source: [GIS News](#) & SuperGeo library

[South Korea and Algeria to Cooperate on Geographic Information](#)

The National Geographic Information Institute (NGII) in the Republic of Korea and the National Council of Geographic Information (NCGI) in Algeria have signed a Memorandum of Understanding (MOU) to collaborate in geographic information, surveying and mapping

Source: Wonkug Baek

[GIS Technology Expanded to All 15 UNU Campuses](#)

United Nations University (UNU) and ESRI recently approved a memorandum of understanding (MOU) at the university's headquarters in Tokyo, Japan. They will collaborate on research, create Centers of Excellence, promote the exchange of graduate students, and provide geographic information system (GIS) training opportunities within and by UNU. "This agreement will promote enhanced spatial information use in UNU's research and education initiatives," said UNU rector and under-secretary-general of the United Nations professor Konrad Osterwalder. UNU is an autonomous organ of the UN General Assembly dedicated to generating and transferring knowledge and strengthening capacities relevant to global issues of human security, development, and welfare. The university operates through a worldwide network of research and training institutes, coordinated by UNU Centre in Tokyo.

Source: Wonkug Baek & GeoCom.com Spatial News

[Back to contents](#)

[3 Regional Mapping Companies Initiate GDMA, a Worldwide Mapping Alliance](#)

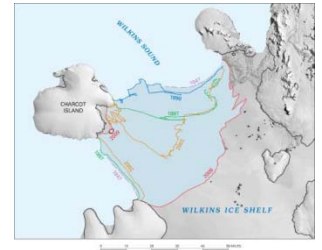
The 3 mapping companies; AND (Netherlands), EMG (China) and Orion (Dubai) received approval from their respective boards to join forces regarding their participation and contribution to the foundation of a Global Digital Mapping Alliance (GDMA) which will establish its Coordination center / Head office in the Netherlands. On the short term the first objective of GDMA is a feasibility study towards (i) the needs from the market regarding an independent and neutral map data provider offering a worldwide navigable map database and (ii) the related technical, operational, financial consequences; in order to position GDMA in the marketplace. The aim of GDMA is to synchronize and integrate individual map databases of various mapping companies into ONE GLOBAL uniform Map database in such a way that the LBS/navigation market can profit from improved usability / accessibility of map data and a shorter time-to-market worldwide.

Source: Wonkug Baek & GeoCom Spatial News

[Ice Shelves Disappearing on Antarctic Peninsula](#)

This image shows ice-front retreat in part of the southern Antarctic Peninsula from 1947 to 2009. U.S. Geological Survey (USGS) scientists are studying coastal and glacier change along the entire Antarctic coastline. The southern portion of the Antarctic Peninsula is one area studied as part of this project, and is summarized in the USGS report, "Coastal-Change and Glaciological Map of the Palmer Land Area, Antarctica: 1947—2009." The report and its accompanying map is available [online](#).

Source: Wonkug Baek & USGS News release



[OGC and bSA Release Report on AEC Interoperability Testbed](#)

The buildingSMART alliance TM (bSa) and the Open Geospatial Consortium, Inc. (OGC®) have released a new report, "Summary of the Architecture, Engineering, Construction, Owner Operator Phase 1 (AECOO-1) Joint Testbed." The report summarizes results of a nine-month effort to increase interoperability among software used by architects, construction companies, cost estimators and building energy analysts.

Jointly led by the bSa and the OGC, the AECOO-1 Testbed was conducted in the OGC Interoperability Program. All results were submitted to the bSa for consideration as candidate specifications and best practices under the National Building Information Model Standard TM (NBIMS) Rules of Governance. The bSa <www.buildingsmartalliance.org>, a council of the National Institute of Building Sciences, develops the National Building Information Modeling (BIM) Standard to streamline the collection and use of construction data.

For more information, visit the [OGC website](#).

Source: Wonkug Baek

[Indonesia to Monitor Food Supply by satellite](#)

The agricultural sector, which in many ways is still trundling along as it has for centuries, is about to get an upgrade from modern technology in the form of a satellite that will monitor the country's food supply .

Source: The Jakarta Globe

[Volcano Monitoring Will Target Hazard Threat to Marianas](#)

Technology designed to detect nuclear explosions and enforce the world's nuclear test-ban treaty now will be pioneered to monitor active volcanoes in the Northern Mariana Islands near Guam. The island of Guam soon will be the primary base for forward deployment of U.S. military forces in the Western Pacific.

Source: [Asian Surveying & Mapping](#) & Eureka Alert

[Asia Braces for Tsunami After Chile Quake](#)

Wide swaths of the south Pacific, Asia and Australia braced for a tsunami after a devastating earthquake hit the coast of Chile on Saturday. Officials in Japan and Australia warned a tsunami from the earthquake was likely to hit Asian shorelines within 24 hours. The Pacific Tsunami Warning Center in Hawaii issued a tsunami caution for areas across the region.

Source: [Asian Surveying & Mapping](#) & the Jakarta Post

News from abroad

"This section has been included to highlight some of the developments happening outside the region which demonstrate SDI in action.

[Interior Department Announces Appointments to National Geospatial Advisory Committee](#)

WASHINGTON, DC – Secretary of the Interior Ken Salazar has appointed 14 individuals to serve as members of the National Geospatial Advisory Committee (NGAC).

The NGAC provides advice and recommendations on federal geospatial policy and management issues as well as a forum to convey views representative of partners in the geospatial community. The members of the NGAC report to the chair of the Federal Geographic Data Committee (FGDC), which is the Federal interagency executive group responsible for providing leadership and direction in Federal geospatial programs. The FGDC is chaired by the Secretary of the Interior or the Secretary's designee. Further information is available from the URL link above.

Source: Federal Geographic Data Committee (FGDC)

[Intermap collaborates with Hella \(automobile headlight manufacturer\)](#)

Intermap Technologies collaborated with Hella KGaA Hueck & Co. regarding a predictive front lighting system based on Intermap's reliable 3D road geometries. The partnership integrates Intermap's high-resolution 3D road geometries and information supplied by camera systems in an automobile, into Hella's front lighting demonstration system – ultimately providing a significant increase in visibility for drivers at night and during inclement weather by automatically directing the headlamp before the driver manually steers the vehicle into a bend or up and down a slope.

Source: [GIS News](#) & Intermap press release

OSM Comes of Age

It seems that the most comprehensive and accurate map of Port au Prince is OpenStreetMap. For people with an interest in mapping, this is one of the most profound stories to come out of the Haitian earthquake. OSM has become the defacto map of choice in disasters.

The story begins with CrisisCommons, an international group established to provide information in disaster scenarios. The group has a wiki at <www.crisiscommons.org>

When the disaster occurred, the map of the Haitian capital, Port au Price, showed little more than the three main roads, the Boulevard Harry Truman, Boulevard Jean-Jacque Dessalines and Nationale No 2, all of which converge near the Port au Prince waterfront.

Volunteers organised by CrisisCommons, most of them not in Haiti, used archive satellite images to draw out the road network, which was annotated by people on the ground. These locals were also able to locate triage centres, camps and hospital on the map.

Meanwhile Crisis Commons obtained before and after images of the city and divided them up into 500 x 500 metre blocks. These blocks were then distributed to volunteers at universities around the world. According to a report in New Scientist magazine, it took less than two days to map every collapsed building in the earthquake zone, around 5000 buildings in all, and pinpoint them on OSM.

The result of this work is that the city has gone from having virtually no maps, to a state-of-the-art map, in less than two weeks. Its difficult to know whether this work has made a difference. It is being used by the World Bank, as well as other NGOs, to guide their work. But whether it has saved lives is difficult to quantify. A study of the effectiveness of the work by CrisisCommons is being planned.

What is no longer in doubt, however, is that it is possible to use crowd sourcing to produce high quality maps on an emergency basis. National mapping agencies, who typically take years to produce a map sheet, will be interested in the results. So will emergency responders and others who demand current information.

Source: [Asian Surveying & Mapping](#)

[GIS to map terroir categories](#)

Using geography, a Kansas State University professor and his colleague are working to scientifically identify and map *terroir* categories that will benefit the producers who make wines and the connoisseurs who enjoy drinking them. The French refers *terroir* as the difference that soil, weather and location make in the taste of wine.

Source: [GIS Development](#) & www.newswise.com

[Back to contents](#)

[Solar flares may severely affect GPS signals](#)

BBC News reports that over the next couple of years, the Sun will reach its period of maximum activity and solar flares will be at their highest point in years. It has made some scientists worried that GPS signals will be interfered with in a way that could cause minor issues for some GPS users. The researchers point out that the military uses a much more complex GPS system than consumers have access to and military use of GPS should not be affected.

Source: [GIS Development](#) & www.dailytech.com

[Robot subs to map Arctic sea floor](#)

Two robot submarines will plunge into the Arctic next month in an effort to help Canada stake a claim to a large swath of potentially mineral-rich seafloor in the polar region.

Source: [GIS Development](#) & *New York Times*

[Researchers measure soil degradation](#)

Researchers have measured the degradation of the planet's soil using the LCA (Life Cycle Assessment) and GIS. LCA is a scientific methodology that objectively analyses the environmental impacts of an activity or process, taking in the full cycle, from extraction of raw materials right through to management of the waste generated at the end of this material's useful life.

The new research shows that using the LCA in combination with GIS makes it easier to adapt the LCA to study the impacts of land use, not only in the case of desertification, but also in terms of loss of biodiversity, erosion, or even water consumption.

Source: [GIS Development](#) & www.sciencedaily.com

[2000 land surveyors for 150 million people](#)

Nigeria has less than 2000 surveyors for a population of about 150 million people.

Source: [GIS Development](#) & CompassNews.net (Nigeria)

[Maps of historic climate change on display](#)

The Nature Conservancy Climate Wizard, powered by ESRI, displays free maps of historic climate change and future projected change. Climate Wizard offers scientists, planners, environmentalists and public users an intuitive means to understand and compare climate change models useful to decision making.

Source: [GIS Development](#) & ESRI Press Release

[Map to make electrical repairs easier](#) (USA)

The Russellville Electric Board unveiled a high-tech map of its entire electrical system - a tool officials expect will increase efficiency and speed up recovery time for outages after storms. The GIS maps of the entire electrical system down to the pole length and wire width is out now and it will help electrical workers in monitoring the grid remotely from laptops.

Source: [GIS News](#) & *Florence, Alabama Times Daily*

[NSAU \(Ukraine\) and DLR \(Germany\) agree on remote sensing data exchange](#)

The National Space Agency of Ukraine (NSAU) and the German Aerospace Centre (DLR) have confirmed their mutual interest in the development of cooperation in the sphere of data exchange on remote Earth-sensing, primarily in crisis situations, according to *Kyiv Post* report.

Source: [GIS News](#) & the *Kiev Post*

[Assessment of Earthquake Hazard in Haiti](#)

The U.S. Geological Survey (USGS) issued an update to its Jan. 21, 2010, statement, which includes the aftershock probabilities for the next 30-to-90-day period and for the overall year. Here is the updated statement in its entirety from the USGS. According to the statement, the aftershock activity will continue for many months, although the frequency of events should diminish with time. Nevertheless, the threat of additional damaging earthquakes within the sequence remains. Based on the characteristics of the aftershock sequence observed so far, the probabilities of future aftershocks, as of February 23, 2010, as follows:

Aftershock magnitude (M)	30-day period	90-day period	1-year period
M 5 or greater	55%	80%	95%
M 6 or greater	7%	15%	25%
M 7 or greater	1%	2%	3%

Source: Wonkug Baek & USGS News release

[Back to contents](#)

URISA Completed Draft of Address Standard

The Board of Directors of the Urban and Regional Information Systems Association ([URISA](#)) has completed a draft of the [United States Thoroughfare, Landmark, and Postal Address Data Standard](#) and has submitted it to the Federal Geographic Data Committee (FGDC) for review and comment. This draft is the result of five years of work by the URISA Address Standard Working Group (ASWG). URISA is a non-profit professional and educational association that promotes the effective use of spatial information and information technologies for the understanding and management of urban and regional systems.

Source: Wonkug Baek & URISA -> About URISA -> Board Initiatives -> Address Data Standard

World Bank to drive SDI Good Practice Country Case study

The World Bank is going to implement an 18-month project, Good Practice Country Case Study on Spatial Data Infrastructure (SDI) for monitoring development outcomes. The 'Good Practice' country in the project is the Republic of Korea and Brazil. According to the Bank's materials, the project's background is as follows:

The recently published World Development Report 2009, Reshaping Economic Geography, demonstrated the policy relevance and use of economic analysis based on GIS data. The 2009 World Development Report has spurred a wealth of studies of economic geography using GIS, which have been welcomed by Bank clients. Increasingly aware of the material and opportunity costs of bad GIS management practices, developing countries are now approaching the Bank for advice on how to develop sound Spatial Data Infrastructure (SDI). Therefore, the project is intended to synthesize lessons from global experience on how countries can manage GIS in support of their development programmes. On the basis on these lessons, technical assistance will be provided to countries who have expressed a keen interest in this service.

Source: Wonkug Baek & [SDI Good Practice Country Case Studies](#)

[Back to contents](#)

Articles**[Conservation of wetlands in Madhya Pradesh: A case study of Ramsagar Reservoir in Datia District, North Madhya Pradesh using GIS](#)**

by [R.J. Rao and R.K. Garg](#), School of Studies in Zoology, Jiwaji University, Gwalior, Madhya Pradesh, India

ABSTRACT

In India freshwater ecosystems are most threatened by the profusion of dams, loss of seasonally flooded forests, and wetlands, and deforestation of surrounding watersheds. Some of the greatest threats are diversion of surface waters, loss of riparian vegetation etc. Specific actions are needed for conservation of the water bodies through detailed scientific studies. A study has been carried out in the Ramsagar Reservoir, Datia District, Madhya Pradesh. Field surveys have been carried out to prepare Biomap of Ramsagar Reservoir by using Global Position System (GPS – make Garmin 76). Geographical coordinates, elevation, area, water depth at different points, water quality and biotic characteristics at different locations were measured with the help of GPS and other limnological equipments. By using GIS Arc View programme Landuse/Landcover, drainage, geomorphology, administrative boundary, socio-economic data has been collected from the Reservoir. Results of these studies are presented in this paper.

Korean Geospatial Landscape : [Digital Geographic Data opens New World](#) by Choe Byong-nam (Senior researcher from the Korea Research Institute for Human Settlements

Korea achieved brilliant economic growth through rapid industrialization. But the process left in its wake reckless territorial development and overburdened infrastructure facilities, which caused various accidents.

Such side effects increased inefficiency thus undercutting national competitiveness and productivity. As part of efforts to prevent or minimize these problems, the nation uses geographic information systems technology. [This is the 19th installment in a series of articles shedding light on Korea's territorial policies - an integral part of the nation's development strategy. Researchers from the Korea Research Institute for Human Settlements, a state-run institute committed to studying means of enhancing the use of national territory, will deal with about two dozen themes related to formulating the territorial development strategy. – Ed of the *Korea Herald*].

[Back to contents](#)

Books and Journals

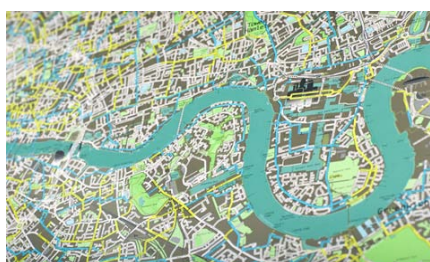
[SERVIR-Africa community news - entries in January 2010](#)

[BBC Four to explore role of maps](#)

BBC Four announced two new series which will explore the fascinating and diverse subject of maps: *Mapping The World* and *The Art Of Maps*. Due to transmit this spring, the series create a "Maps Moment" on BBC Four that explores the role of maps as a unique window on history and the beauty inherent within them. However, their transmission will coincide with a British Library exhibition, *Magnificent Maps: Power, Propaganda and Art*. [Editors' note: while television programmes are not usually described as "books & journals" we were unable to devise a better heading for these two television documentaries.]

Source: [GIS Development](#) & BBC Press Release

[The latest cartographic take on London](#)



Stretching from Richmond Park across to the Olympic site and from Hampstead Heath down to Dulwich - the new map, from *The Future Mapping Company's* founder and one-time tailor, Marcus Kirby, has been launched. It contains the whole of London in its sights. Alongside the usual highways and byways, Kirby has highlighted an array of cycle routes across the city - including greenways through parks and canals, off-carriage cycle ways and routes recommended by fellow cyclists. Available as a single 1.3 x 1m print on high quality silk-coated paper, the new London map also comes in both magnetised and framed formats. Lithograph printed in order to achieve a wider, brighter range of colours -

and featuring both metallic and fluorescent inks - the latest print from *The Future Mapping Company* is a challenge to the Ordnance Survey standard.

Source: [GIS News](#) & wallpaper.com

[Back to contents](#)

Just for Fun !

[SuperGeo Integrates GPS and GIS Learning into Treasure Hunting Game](#)

SuperGeo Technologies, the leading global provider of complete GIS software and solutions, develops an interesting application that integrates geographic information system (GIS) as well as global positioning system (GPS) concepts into Treasure Hunting Game. Treasure Hunting Game is a challenging and educational outdoor activity applying GPS and GIS concepts. Further information available from URL link above.

Source: GISLounge

[Navigation Ability May Be Linked to Genes](#)

A new research has linked genes to our ability to orient ourselves to the world around us and then navigate through it.

Source: [Asian Surveying & Mapping](#) & DailyIndia.com

[Mapping Mishap: PM calls out minister for 'Route 66'](#)

Cambodian Prime Minister Hun Sen on Wednesday called Minister of Public Works and Transport Tram Iv Tek a "gang minister" after the senior official changed the number of National Road 67 to 66, creating cartographic confusion. Speaking at the opening of construction on National Road 62, which runs from Kampong Thom to Preah Vihear, the premier said Tram Iv Tek had acted recklessly in renaming National Road 67, which links Siem Reap to the border with Thailand in Oddar Meanchey. "The international border gate ... calls it number 67, so there is no need to change it," Hun Sen said. "Why do you need to change so much? I lost the number, and now even the prime minister is confused. I beg you, stop changing the road numbers," Hun Sen said, adding that the minister was behaving like a gangster by changing numbers without consulting the proper authorities. "I announce today to cancel this and keep 67 as its number," Hun Sen said.

Source: [Asian Surveying & Mapping](#) & The Phnom Penh Post

[Back to contents](#)

[Newspaper Map](#)

Here is an interesting geo-enabling application, **Newspaper Map**. It displays these daily newspaper front pages in their original, unedited form.

Just put your mouse on a city anywhere in the world and the newspaper headlines pop up. Double click and the page gets larger...you can read the entire paper on some if you click on the right place.

And, this site changes every day with the publication of new editions of the paper.

Source: reported by Wonkug Baek

[Man in A Box: Tim Shaw Locked in Box, Live Stream to World](#)

That's the name of the live stream project Tim Shaw is cooking up for Justin.tv. Shaw, a controversial UK broadcaster, will lock himself in a 3 foot high, 4.5 foot wide and 8 foot long box, with only a video camera for company. The box will be moved to a location Shaw is unaware of. Shaw will get food and water through a sliding hatch, but will have no social interaction whatsoever. His only friend will be an audience that can't talk back. Each day, Shaw will receive a daily clue as to his whereabouts, which he'll share with his audience. **The first person to piece together his location will receive £30,000.** If no one guesses his location, Shaw will remain locked up for the full 30 days.

[**Editors' note:** the wiser co-editor insisted this item be included under "Just for Fun" and overrode her less wise co-editor who wanted to include it under "Funding Opportunities, Awards, Grants".]

Source: NowPublic.com & [CNet News](#) & [Zimbio.com](#)



[Rama's Bridge: Earth Image of the Week](#)

Generally cloud-free conditions across South Asia on February 22, 2010, provided a striking view of a unique geological feature connecting India and Sri Lanka. Rama's Bridge, also known as Rama Setu and Adam's Bridge, is a 30-mile string of limestone shoals that geological clues indicate was an ancient land connection between the two countries.

Source: [Asian Surveying & Mapping](#) & EarthWeek.com

[Back to contents](#)

Training Opportunities

[United Nations University and ESRI to Collaborate on GIS Research and Training](#)

ESRI and United Nations University (UNU) recently approved a memorandum of understanding (MOU) at the university's headquarters in Tokyo, Japan. They will collaborate on research, create Centers of Excellence, promote the exchange of graduate students, and provide geographic information system (GIS) training opportunities within and by UNU.

Source: GISLounge

[Demographic and Health Surveys \(DHS\) course in Kenya](#)

University of Nairobi Enterprises and Services Ltd is offering a professional short course on Demographic and Health Surveys for Health for June 21-25, 2010 in Nairobi, Kenya. The course provides an overview of the DHS surveys and how to use DHS data to improve health programs.

Demographic and Health Surveys (DHS) are nationally-representative household surveys that provide data for a wide range of monitoring and impact evaluation indicators in the areas of population, health, and nutrition.

Demographic and Health Surveys provide countries with a standardized tool to obtain indicators for the effective monitoring of national programs such as those on HIV/AIDS, health and family planning services available in a country.

[Contact: Prof. Mwanthi](#)

Source: Kate Lance

[The New Professional Spatial Information Programs](#) at the [University of Melbourne](#)

In 2008 the University of Melbourne started to transform all their professional education into 3+2-year programs, as Australia's first and still only university. One of the reasons is clearly a broader international acceptance of the degrees, if we look, for example, at the transition in Europe following the Bologna Declaration for an improved comparability of degrees across Europe). Another reason is responding to demands from industry for

[Back to contents](#)

a broader education and more general skills of university graduates. This way the University of Melbourne offers now distinctive, premium education programs on the Australian market.

In 2010 the transformation completes with the introduction of the new professional 2-year master programs, after the introduction of a broader education in 3-year bachelor programs over the previous years. Two of these master programs are relevant for the GSDI community: the *Master of Engineering (Geomatics)* and the *Master of Spatial Information Science*. Within this program structure we will educate graduates for the surveying and land administration profession primarily through the Master of Engineering (Geomatics), and for the larger spatial information industry primarily through the Master of Spatial Information Science.

Master of Engineering (Geomatics)

One of these new master degrees is the *Master of Engineering (Geomatics)*. The master can either be taken after a Bachelor of Environments or a Bachelor of Science at the University of Melbourne, which both offer a major in Geomatics. The major makes 9 out of 24 subjects; the rest of the subjects can vary significantly. With this broad undergraduate education and the major in their pockets, students continue with a two-year Master of Engineering (Geomatics). Alternatively, for students with other undergraduate educations, the Master of Engineering (Geomatics) can be taken as a three-year program, where the first year is for catching up with the subjects of the undergraduate major.

Both pathways are provisionally accredited by Engineers Australia and the Surveyors Registration Board of Victoria. They are already fully accredited by the Royal Institution of Chartered Surveyors.

Master of Spatial Information Science

The *Master of Spatial Information Science* can be taken with any (relevant or related) first degree. It is also a professional two-year master program, but with a different focus and aiming for the broader spatial information industry beyond surveying and land administration. It comes even with a minor: besides a strong education in spatial information subjects, students will choose subjects from other master programs to shape their individual profile and qualification, for example combining spatial information with economics, with computer science, with information science, with planning, with environments, with construction, or with public health. It is their choice.

This way, we believe our future graduates will come with a broader horizon, and will be prepared for the flexibility required by an increasingly dynamic technological and economical environment in the spatial information industry.

Forestry GIS User Group Opens for Membership

ESRI has launched a new user group specifically for its forestry and timberland management customers. The newly formed ESRI Forestry Group (EFG) will build opportunities for foresters to learn about business solutions, network with like-minded professionals, and develop professional growth.

Source: Vector1Media

UNIGIS MSc now in Australia

The international UNIGIS MSc postgraduate degree is now offered in Australia through the UNIGIS study centre at the University of Canberra, ACT. Students are invited to enrol in a joint programme combining the capacities from the University of Canberra and University of Salzburg, Austria.

This new UNIGIS study centre is led by Prof. George Cho at the Institute of Applied Ecology, University of Canberra. It offers in-service distance education for professionals interested in GIS and Geoinformatics. Courses towards the MSc will be launched with an on-site workshop in later in 2009 and lead students to recognized international academic degrees.

Source: <http://www.unigis.net>

Trimble Seminars

Trimble will launch a new series of web seminars for people with an interest in GPS and GIS. They will be offered every 4-6 weeks. The schedule for upcoming Webinars includes: an introduction to the new Yuma rugged tablet computer and VRS. Visit the [Trimble website](#) for more information.

Source: [Asian Surveying & Mapping](#)

Web Map Gallery

[Web Map Gallery](#) | [Contribute Web Map](#)

Web Map Gallery is a resource for readers to see what others geospatial professionals have created. We encourage you to contribute to the gallery so that all may benefit from the breadth of geospatial applications

[Back to contents](#)

now being used in many industries. Please feel free to use the link "Contribute Web Map" above to add your own Internet-based mapping application with as much information as necessary to explain your contribution.
Source: [Directions Magazine](#)

[GIS software training by ESRI](#)

ESRI now offers access to more than 40 beginning, intermediate, and advanced instructor-led GIS courses through a variety of training alternatives and venues including

- Video teleconferencing training at the ESRI learning centers
- Virtual Classroom **online training delivered to students' own workplaces or home computers**

Source: GIS News

[ESRI Training Program](#)

ESRI in Singapore has released its training schedule for the first part of 2010, up to next February. Seats are reserved on a 1st-come, 1st-served basis, upon registration. Training prerequisites will be as indicated in the course notes. For course outlines, contact [ESRI](#) direct.

[Geospatial technology update seminars scheduled for SE Asia](#)

ESRI and GIS Development will present free seminars to mapping agencies in Southeast Asia. The Geospatial Technology Update seminars will take place in Jakarta, Indonesia; Bangkok, Thailand; Hanoi, Vietnam; Kuala Lumpur, Malaysia; and Manila, Philippines; beginning in January 2010. The seminars will outline technology trends in the geospatial community including how to take advantage of the Web 2.0 environment, the integration of topographic and remotely sensed data, and how to best offer published data via cloud computing.

Mapping organization staff members and managers and their affiliates, including national hydrographic and aeronautical agencies, are invited to attend the free, daylong program in their respective cities. For more information and to register, visit <http://www.GISdevelopment.net/GTUS>. For more information on how mapping agencies use GIS software, visit www.esri.com/maps

[FOSS 4G 2010 Workshops - Barcelona, Spain.](#)

The Free and Open Source Software for Geospatial (FOSS4G) conference is pleased to announce this year's Workshops panel.

Workshops are a unique experience to learn about open source software from the experts in a hands-on environment. Workshops are 3 hour courses presented in full computer labs, with two attendees per computer, in the Barcelona School of Computer Science.

We are offering 14 workshops this year, in two sessions, on Monday afternoon, September 6, and on Tuesday morning, September 7. When registering, workshop attendees will be asked to choose one workshop in each session.

Following is a brief description for each workshop. For more detailed information and registration, please visit the FOSS4G 2010 web page: <http://2010.foss4g.org>.

In the Conference web page you will also find the Tutorials panel, to be held during the conference days, September 7-9, which are included in the conference fee. And you can take the opportunity to book the gala dinner tickets too.

Workshops have a high demand, and classroom capacity is limited. Register soon, don't miss them!

September 6 Workshops (Monday afternoon, 15-18h)

W-01: Web mapping with GeoServer

Attendees will learn how to load, publish, and share geospatial data with GeoServer. Discussion will include navigating the GeoServer user interface, loading and publishing data, OGC web services, and styling data with SLD. Also showcased will be Styler, a browser-based graphical style (SLD) editor.

W-02: gvSIG 1.9 user workshop

The main objective of the workshop is to show the new features included in the last stable version of gvSIG desktop (1.9). Also a brief introduction on gvSIG.org, the main collaborative web portal of the gvSIG project.

W-03: Setting up an OpenStreetMap rendering toolchain

This workshop will walk the participants through getting raw OpenStreetMap data, rendering map tiles with Mapnik, and displaying them with OpenLayers. They will learn how to install and configure a mimic of the main OpenStreetMap toolchain, using the same technologies, that can be later customised to render other datasets.

[Back to contents](#)

W-04: Introduction to PostGIS

PostGIS is an open source spatial extension to the PostgreSQL open source enterprise relational database. Spatial databases such as PostGIS, Oracle Spatial and DB Spatial are used for high-performance multi-user access to large seamless data sets. If you are managing large volumes of read/write spatial data, using a spatial database can improve access speed, ease management overhead and guarantee data integrity. Built as an object extension to PostgreSQL, PostGIS has been certified as "Simple Features for SQL" compliant by the Open Geospatial Consortium.

W-05: Introduction to the Mapbender geoportal framework

This workshop gives an in-depth introduction to the software Mapbender, a managed, web based geoportal framework. Mapbender is implementing the publish / register, find, bind, execute paradigm for geospatial data. The focus of the workshop lies on building web mapping applications with distributed Spatial Data Infrastructure components and how to manage user access. All this will be done by using Mapbender's administration interfaces, without the need to modify any source code.

W-06: Solid web mapping with Python

Covers the Shapely and GeoJSON libraries from the GIS Python Lab. It shows how to use these libraries together with SQLAlchemy and its GIS extension, GeoAlchemy, to create HTTP web services in an application developed with the Pylons web development framework. The workshop then teaches how to use MapFish to make the development of GIS web services easier.

W-07: Practical introduction to ZOO, the powerful WPS platform

The ZOO-Project provides a WPS (Web Processing Service) compliant and developer-friendly framework to easily create and connect OGC Webservices. During this workshop, participants will install the ZOO-Kernel and related material on their computers; upon installation the users will be ready to use and implement WPS 1.1.0 services.

September 7 Workshops (Tuesday morning, 9-12h)**W-08: Getting started with MapServer**

This hands-on workshop is intended as an introduction to Web mapping with the University of Minnesota MapServer. The participants will go through the process of setting up a MapServer environment which includes configuring a Web server and creating a MapServer application.

W-09: Quantum GIS and PostGIS: Solving spatial problems and creating web-based analysis tools

Quantum GIS (QGIS) is a powerful open source GIS desktop application. It excels at viewing and manipulating a wide variety of GIS data and services, performing geographic analysis and preparing data for MapServer and GeoServer applications. QGIS has an extensible "plug-in" architecture and now provides comprehensive support for using and managing PostGIS databases. This workshop/tutorial will give students hands-on experience for applying QGIS to real-world spatial analysis problems and the development of PostGIS tools for web-based mapping and services.

W-10: FOSS4G routing with PgRouting tools, OpenStreetMap road data and GeoEXT

pgRouting adds routing functionality to PostGIS. This introductory workshop will show you how. It gives a practical example of how to use pgRouting with OpenStreetMap road network data. It explains the steps to prepare the data, make routing queries, assign costs and use GeoExt to show your route in a web-mapping application.

W-11: Working with OpenLayers

This workshop will guide participants through the library core, providing the experience necessary to build interactive mapping applications. We will cover best practices for dealing with a variety of raster and vector data sources, investigate client side styling, and discuss options for integrating OpenLayers with other JavaScript libraries.

W-12: GeoNetwork for dummies, or how to setup an SDI in 3 hours

The workshop will focus on the implementation of a GeoNetwork opensource based catalog to serve and access geospatial data in a Spatial Data Infrastructure. A local catalog will be installed and configured. Harvesting of spatial data resources from remote servers will be configured and geospatial web map services will be set up using the embedded GeoServer and configured for access through the catalog web interface.

[Back to contents](#)

W-13: Geospatial for java

This GeoTools session is back by popular demand in a new long format workshop. Offering a visual introduction for Java developers we will exploring how you can integrate GIS services into your next project. For those new to the GeoSpatial scene we provide an introduction to current concepts and projects, and how to avoid common pitfalls.

W-14: Practical introduction to GRASS

The workshop has two parts: a brief GRASS overview and a hands-on session by the attendees. The aim is to allow the first time users to understand the logic of the software and to experiment some significant, although necessarily limited, data processing for technical and environmental GIS applications. The workshop provides a brief introduction to GRASS and then a step by step tutorial to guide beginners in the basic applications of the software, highlighting GRASS' interoperability with other FOSS and proprietary software.

Source: [FOSS4G 2010 press release 5](#)

[Back to contents](#)

Funding Opportunities, Awards, Grants

[There are two mapping contests of note.](#)

The first is [ESRI's 2010 Mashup Challenge](#): "Create an innovative mashup using ArcGIS Online and Web Mapping APIs". Four cash prizes are available with a top prize of \$10,000. Second place wins you \$5,000 and third and fourth place are \$2,500 each. **The deadline is March 5, 2010.** Second, Microsoft is offering you a chance to win a \$100 gift card for trying out Bing Maps.

Source: GISLounge

[MapGuide Project Sponsorship Program](#)

The MapGuide Project Steering Committee is pleased to announce the MapGuide Open Source Project Sponsorship and Donation program. This program provides a source of funding to help ensure the continued success of MapGuide Open Source. The full details of the program are available at the URL link above.

Source: [OSGeo](#)

[NAVTEQ Global LBS Challenge](#)

The NAVTEQ Global LBS Challenge is focused on driving the development and visibility of innovative location-based solutions (LBS) for wireless devices. The Global LBS Challenge has become the premier event in the wireless industry and a global symbol of LBS innovation and opportunity. From business applications to sports, travel and security, integrating the accuracy and richness of NAVTEQ digital map data facilitates the discovery of the next wave of LBS using dynamic positioning technology.

Winners are chosen by a panel of distinguished judges in each of five regions. Since the launch of the NAVTEQ Global LBS Challenge, over 32% of the finalist companies have gone on to receive venture capital funding or launched commercially-distributed applications, many on major wireless carriers.

Further information on the registration process is available from [here](#)

Thanks to Kate Lance & Wonkug Baek for this update on the Challenge:

UPDATE: [Eight new sponsors for NAVTEQ LBS Challenge](#) Microsoft, Intel, Digital Globe, Alcatel-Lucent, Atlas CT, Imagination Technologies and Mobile Distillery are the new added sponsors to the list. Previously announced sponsors were HTC, Blackberry, deCarta, DeviceAnywhere and Tanla. These sponsors are contributing to a prize pool valued at over \$10 million, mostly made of professional licenses (maps, geospatial platforms, software testing tools, etc).

Source: NAVTEQ

[Earn a PhD in Fuxin](#)

Professor Xu Aigong is seeking PhD students to study under him at Liaoning Technical University in Fuxin, China. His subjects of interest include geodesy and geomatics, GNSS, GIS and intelligent transportation systems. Students may be eligible for support under the 2010 Liaoning Provincial Government Scholarship Program. Email [Prof. Xu](#) for details

[Back to contents](#)

Employment Opportunities

GIS/Web Development Manager, Kabul

We have a position vacancy for a GIS/Web Development manager based in Kabul. Further details pasted below. Role will be about 12mths initially, with potential for extension for a further couple of years. Salary scale is based on your personal history plus a small bump as per normal USAID practice, plus 70% in danger and away from home allowances and paid in US dollars. Paid time off is up to 3mths per year, includes 2 return trips to home or a place of your choice, and 2 other trips where they drop you at Dubai or Delhi, and includes full medical and life insurance. Food, accommodation (secured by nepalese ghurkas and local security), laundry and most other needs are catered for. If you're single, move to Australia first, take the job and enjoy tax free status for development work. We live next to a supermarket.

The environment does have its risks of course as you will have seen on the news, but the workplace environment is relatively safe. You aren't normally exposed to the stuff you see on TV, and it's nothing like Iraq. You can leave the compound, go to cafes' bars and restaurants, also a local shopping mall, and other activities. If you have queries I am happy to answer, but in the meantime, please send me your resume.

Duane Wilkins, GIS Manager | Afghanistan Infrastructure Data Centre | 34.534058° 69.177744°
Regional Command South and West, Health, Education, Infrastructure Liaison
USAID Human Resources and Logistical Support Program II
Ph: +93 700 219 622 [Email](#).

Spatial Jobs Online (Australia) Because of tight application closing dates the editors provide these websites for employment seekers to access directly: < <http://www.spatialjobs.com.au/> > and < <http://www.GISjobs.com.au> >

Looking for a GIS - Geomatics Job in Canada?

Here are some links: 1) [Geomatics Canada Job Site](#); 2) [GeographyJobs.ca](#); 3) [GoGeomatics Canada](#); 4) [Geomatics Employment Center](#)
Source: V1 Magazine

Conference Proceedings

5th gvSIG Conference Proceedings available

The videos of the report sessions and workshops at the 5th gvSIG Conference, that were held the first week of December 2009, are available already.

All the videos are available with English and Spanish audio. They are available to be downloaded directly as well as to be visualized online.

With this publishing, we pretend to bring the Conference closer to the interested people that couldn't attend the event, having the possibility to access to the recording of the different sessions.

[Back to contents](#)

Conferences, Events

For upcoming events of global or major international interest, please visit the [upcoming conference list](#) on the GSDI website.

FIG 2010 Pre-Congress Program

Online registration is now open for the FIG surveying congress to be held in Sydney, 11-16 April 2010. A local surveyor, John Brock, has arranged a history seminar on the two days leading up to the congress (9-10 April). Technical tours have also been organised, including a boat trip to historic Fort Denison.

Source: [Asia Surveying and Mapping Magazine](#)

The editors welcome news of conferences & events from the newsletter subscribers

[Back to contents](#)

Date	Location	Event
March 2010		
3 – 5 March	Gold Coast, Australia	ESRI Asia Pacific User Conference and OZRI 2010 The theme for the conference is GIS: extending the reach . ESRI Australia clients, ESRI users and distributors from around the Asia Pacific region are invited to share their knowledge and experience by submitting an abstract based on the conference theme. The event incorporates OZRI 2010, ESRI Australia's national client conference.
3 – 5 March	Denver, Colorado, USA	International LiDAR Mapping Forum (ILMF10) Conference Programme (pdf) For more information contact
5 – 12 March "NEW"	Taipei, Taiwan	International Symposium on Grid Computing (ISGC) 2010
7 – 8 March "NEW"	Taipei, Taiwan	2nd EUAsiaGrid Workshop 2nd EUAsiaGrid Workshop on Natural Disaster Mitigation will focus on the topics related to earthquake and climate change as the two major issues that the mankind are facing at the moment. Additionally, more user cases, local data, analysis tools and simulation models will also be shared. This Workshop follows a previous successful EUAsiaGrid mitigation workshop which was held in December 2009. Since this Workshop, several outstanding discussions are extended by grid professionals and domain experts. A grid-based e-Science Infrastructure has been applied for developing better solutions to support the application in the field of Natural Disaster Mitigation. Note as well, EUAsiaGrid Online Training EUAsiaGrid Online Training aims at providing the basic know-how to use a Grid infrastructure powered by gLite middleware. During the course, participants will be shortly introduced to the Grid concept, after they will perform practical exercises, described step-by-step, showing the different components available in the infrastructure, so to understand how these works and how to use them in the participant workflow. The course will span 4 weeks: the first week will provide the introduction to Grid and the security components, the second week will show how to execute application remotely, the third week is dedicated to the Data management and finally several higher level components, useful in many application contexts, will be showed.
10 – 12 March "NEW"	Bali, Indonesia	4th GEOSS Asia-Pacific Symposium Contact
22 – 24 March	Abu Dhabi, UAE	Map Middle East 2010 Contact
23 – 26 March	Kyushu Sangyo University, Fukuoka, Japan	Fifth International Workshop on "Geographical Analysis, Urban Modeling, Spatial Statistics" GEOG-AN-MOD 10 in conjunction with The 2010 International Conference on Computational Science and its Applications (ICCSA 2010) Important dates 10 November, 2009: Deadline for full paper submission 7 December 2009: Notification of acceptance 8 January 2010: Deadline for Camera Ready Papers March 23-26, 2010: ICCSA 2010 Conference For further information or questions , please send an e-mail to: Giuseppe Borruso (University of Trieste, Italy) or Beniamino Murgante (University of Basilicata, Italy)
April 2010		
11 – 14 APRIL	Manama,	Geospatial Intelligence Middle East 2010

[Back to contents](#)

"NEW"	Bahrain	Email
11-16 April	Sydney, Australia	<p>International Federation of Surveyors (FIG) Congress 2010 Contact email The deadline for submission of abstracts is 22 September 2009. Alternative URL: FIG 2010 Pre-Congress Program Online registration is now open for the FIG surveying congress to be held in Sydney, 11-16 April 2010. A local surveyor, John Brock, has arranged a history seminar on the two days leading up to the congress (9-10 April). Technical tours have also been organised, including a boat trip to historic Fort Denison.</p>
12-13 April	Melbourne, Australia	<p>The International Symposium on Coastal Zones and Climate Change (ISCZ) will be held 12-13 April, 2010 at Monash University in Australia. The coastal zone will house 75 per cent of the world population by 2025. However, coastal zones face severe socio-economic and environmental problems, of which rising sea level is just one. The symposium is sponsored by the Asia Pacific Network for Global Change Research. Contact - Registration queries Email: Irene.Thavarajah@adm.monash.edu.au Contact - Further Queries Email: Charlotte.Fisher@sci.monash.edu.au</p>
13-14 April "NEW"	Trieste, Italy	<p>The 3rd gvSIG Users Meeting This conference is jointly organized by the "Ispettorato Ripartimentale Foreste di Trieste and Gorizia," the "Dipartimento di Scienze della Vita dell'Universit degli Studi di Trieste", the "Comune di San Dorligo della Valle - Dolina Obina" and "Zavod za gozdov Slovenije, OE Seana. During the event, those present will know both the innovations in the latest versions of Desktop gvSIG and Mobile gvSIG, with the participation of the gvSIG Association, and different success stories submitted by users of the gvSIG Community of the above-mentioned countries. You can submit your abstracts now because the period for receipt of abstracts is now open. Likewise, registration is now open for the Conference. The conference is free to attend.</p>
April 13-15, 2010	Toronto, Ontario	<p>GeoTec 2010 - Increasing Productivity, Potential and Profits Call for Presentations – 2010 GeoTec Event DEADLINE EXTENDED! - Submissions due December 7, 2009 Contact Kathleen Hastings.</p>
14-16 April	Zahedan, Iran	<p>4th International Congress of the Islamic World Geographers (ICIWG2010) Abstract deadline has passed. This congress is a chance for scholars across Iran and the world to exchange ideas and offer solutions in order to address obstacles facing the Islamic world and furthermore achieve sustainable development. Information Technology advances, especially in Information Management as well as new technologies in Geographic Sciences such as Geographic Information System (GIS) and Remote Sensing (RS), are very important to the geography community. Contact.</p>
25-29 April	Phoenix, Arizona	<p>2010 GITA Email</p>

April 26-28	Al-Khobar City, Saudi Arabia	<u>The Fifth National GIS Symposium and Exhibition.</u> Featuring a state-of-the-art exhibit, plenary, keynote, and technical sessions, the symposium will bring all stakeholders in the geospatial domain – academia, researchers, students and the industry – onto one platform for interaction, sharing and discussion on various topics such as collaboration on spatial technology and experiences gained. For further details, check the website.
26-28 April	Singapore	<u>Spatially Enabled Government Asia – Singapore – 2010</u> Spatially Enabled Government Asia will focus on the strategies for data management and data sharing. Email
26-29 April	Sendai, Japan	<u>PICES Symposium</u> , an international symposium on Climate Change Effects on Fish and Fisheries: Forecasting Impacts, Assessing Ecosystem Responses, and Evaluating Management Strategies. Abstract submission deadline: November 30, 2009 Financial support application deadline: January 15, 2010
26 - 30 April “NEW”	San Diego , California , United States	<u>ASPRS 2010 Annual Conference</u> Organiser: American Society for Photogrammetry & Remote Sensing Contact: 5410 Grosvenor Lane Suite 210 Bethesda, MD 20814 Phone: 301 493 0290 x106 Fax: 301 493 0208 Email
28-29 April “UPDATED”	Kuala Lumpur, Malaysia	<u>The 6th International Remote Sensing and GIS Conference and Exhibition (MRSS 2010)</u> is being organised by the Malaysian Remote Sensing Society (MRSS) and Universiti Putra Malaysia. It is scheduled for 28-29 April, 2010 at PWTC in Kuala Lumpur. MRSS has issued a call for papers for the conference. Abstracts should have been submitted by 10 February, 2010 (extended). Contact E-mail (Attn: Ms Nuraini Bt Abdul Thalib)
May 2010		
17-21 May 2010	Chicago, USA	<u>The 2010 International Symposium on Collaborative Technologies and Systems (CTS 2010)</u> Contact contact one of the Symposium's Co-Chairs: Bill McQuay or Waleed W. Smari . <u>Workshop on Sensor Web Enablement 2010 (SWE2010)</u> As part of The 2010 International Symposium on Collaborative Technologies and Systems (CTS 2010) Abstract Submission Deadline: December 18, 2009 Paper Submission Deadline: January 8, 2010 Notification of Acceptance: February 7, 2010 Registration & Camera-Ready Paper Due: March 1, 2010 Note that the workshop paper submission deadline is different from that of the CTS 2010 main conference.
19-21 May “UPDATED”	Istanbul, TURKEY	<u>INTERGEO East 2010</u>
20-21 May 2010	Taipei, Taiwan	<u>7th Taipei International Digital Earth Symposium (TIDES) 2010</u> Abstract deadline: December 31, 2009. This year's theme is “Digital Earth for the New Generation Towards a Green Earth”, and topics are related to the fields of Earth Observation & Technology, Social Science & Education, and Environmental Change & Strategy. The focus through these discussions is to upgrade Digital Earth education for the young generation and attract more young people to become involved in Digital Earth study, to help restore the balance now missing in our

		relationship with the Earth. Contact
26-28 May	Hong Kong	The 14th International Symposium on Spatial Data Handling Organisers are inviting abstracts related to the theme Theory, Modelling and Concepts in Geospatial Information Science. The event will explore topics such as digital cartography, data modelling for social science and interoperability. The deadline for abstracts is 31 August. Pdf flyer available at International Symposium Announcement
27 – 28 May	Bishkek, Kyrgyz Republic	Fourth Central Asia GIS Conference (GISCA 2010) Water: Life, Risk, Energy and Landuse Contact: Dr. Akylbek Chymyrov Tel: +996 (312) 545602
June 2010		
2 – June “NEW”	New Delhi, India	GeoIntelligence Asia Conference and Exhibition on Geospatial Technologies for Defence and Security
9-11 June	Washington, DC USA	The First International Conference on Computing for Geospatial (Com.GEO 2010) Important Submission Deadlines Full and Short Papers February 19, 2010, Courses Proposal February 19, 2010 Tech Talks Abstract March 22, 2010, Invited Sessions Proposal January 25, 2009 Workshops Proposal January 25, 2009
9-11 June	Nottingham, United Kingdom	The British Cartographic Society Annual Symposium 2010 ‘Talking With Maps’ The closing date for submissions is Friday 8th January 2010. Successful submissions will be notified by no later than Friday 22nd January. Proposed titles and abstracts of no more than 300 words should be submitted to: Mr P Jones , Chair of Programme Committee, Defence Geographic Centre, Hotine 141, Elmwood Avenue, Feltham, Middx, TW13 7AH.
18-20 June 2010 “NEW”	Beijing, China	18th International Conference on Geoinformatics (Geoinformatics 2010) The conference theme is “GIScience in Change”. CALL for Papers: Abstract deadline: January 30, 2010. CPGIS will organize student paper competition. The top quality papers will be selected as CPGIS Geoinformatics' 2010 Best Student Paper to receive plaque and cash award, and will be invited to submit a revised version to a special journal issue. Pre-conference workshop: Topological analysis of urban street networks for better understanding of human mobility patterns
21-22 June “NEW”	Nottingham, UK	The OSGIS Conference (Open Source GIS UK Conference) As a highlighted event, the first gvSIG Day will be held at the Conference. The main activity of this day will be a wide workshop during 8 hours the 21st June, where gvSIG Desktop and gvSIG Mobile will be shown in-depth. The entities that wish to contact with the gvSIG Association previously can do it from the form of the website [4], with the objective of planning meetings for the gvSIG Day.
21-24 June	Yogyakarta, Indonesia	9th GISDECO Conference Theme: Applying Remote Sensing and GIS in Disaster Management Abstract deadline: 15 January 2010. The conference aims to encourage the use of geospatial information in disaster and risk management as well as a basis

[Back to contents](#)

		for spatial planning and regional development. Contact: Dr. Richard Sliuzas, ITC For practical matters: Dr. Projo Danoedoro , PUSPICS Faculty of Geography, Gadjah Mada University,								
28-30 June	London	International Conference on Information Society (i-Society 2010) Technically Co-Sponsored by IEEE UK/RI Computer Chapter								
“NEW” July 2010										
5 – 7 July	Vienna	100 Years ISPRS: Call for Papers Organisers of the ISPRS Commission VII Symposium (5-7 July 2010, Vienna) are inviting papers relating to the theme, 100 Years ISPRS – Advancing Remote Sensing Science. They are particularly seeking contributions that critically review major research areas in remote sensing. The deadline for full-paper review is 28 November 2009. The deadline for abstract-only review is 28 February 2010.								
5 – 7 July	Barcelona, SPAIN	EDULEARN10, the International Conference on Education and New Learning Technologies Abstract submission: 1st April 2010 Acceptance notification: 22nd April 2010 Final Paper submission: 20th May 2010 For more information CONTACT NOTE - You can present your projects in two modalities: <ul style="list-style-type: none"> • In person: oral and poster presentations. • Virtually: if you can not attend in person 								
6-9 July	Salzburg, Austria	GI Forum 2010 The organisers of the GI Forum 2010 in Austria have issued a call for papers for the conference, which will be held 6-9 July. The conference theme is spatial assessment and analysis of vulnerability. Workshops will be held prior to the conference on 6 July. email IMPORTANT DATES Full papers for publication in the conference proceedings and oral presentation February 1, 2010 Extended abstracts for discussion session February 1 Extended abstract for poster presentation June 7 Workshop presentation February 19 Registration deadlines Early registration – until May 28, 2010 Online registration – until June 25 On-the-spot registration commences July 6 The GI Forum pass provides access to the AGIT Symposium and AGIT Expo as well.								
12 – 16 July	San Diego	30th Annual ESRI User Conference Call for papers & presentations – Abstract deadline closed 6 November ESRI invites users to tell their GIS story by sharing their experiences with GIS and presenting during a moderated session at the 2010 ESRI International User Conference (ESRI UC).								
26 – 28 July	Kuala Lumpur, Malaysia	MapAsia 2010 Email Important Dates to Remember Call for Papers <table style="width: 100%; border: none;"> <tr> <td>Abstract Submission</td> <td style="text-align: right;">May 24, 2010</td> </tr> <tr> <td>Abstract Acceptance Intimation</td> <td style="text-align: right;">June 04, 2010</td> </tr> <tr> <td>Submission of Full Papers</td> <td style="text-align: right;">June 30, 2010</td> </tr> <tr> <td>Author Registration</td> <td style="text-align: right;">June 22, 2010</td> </tr> </table> For any queries related to papers, contact Simmi Sinha .	Abstract Submission	May 24, 2010	Abstract Acceptance Intimation	June 04, 2010	Submission of Full Papers	June 30, 2010	Author Registration	June 22, 2010
Abstract Submission	May 24, 2010									
Abstract Acceptance Intimation	June 04, 2010									
Submission of Full Papers	June 30, 2010									
Author Registration	June 22, 2010									
26 – 30 July	Vancouver, BC Canada	GeoWeb 2010 Conference Update Reminder About the Call for Presentations/Workshops								

[Back to contents](#)

“NEW”		<p>& Academic Track Call for Papers Reminder: Call for Presentations and Workshops Ends March 12, 2010</p> <p>GeoWeb 2010 is currently seeking submissions for presentations and workshops. GeoWeb is the industry-leading conference focused on the collective impact of the Web on geographic information standards, architectures and technology and the convergence of GIS and the Internet and the resulting economic, social and technical consequences. The emphasis for GeoWeb 2010 is Going Real Time. GeoWeb is about the technologies for information sharing and collaboration respecting events and activities in the real world. It is about designing our world and reacting to the changes in the world around us. It is about managing our way in the world using the best information concerning the current and probable future state(s) of the world. In addition to the special academic tracks described below, GeoWeb will provide more than 50 technical presentations, keynote and invited speakers, panel sessions, and 16 workshops.</p>
28 – 30 July “NEW”	Baltimore, MA USA	<p>Intelligent Spatial Decision Analysis (ISDA '10) & International Symposium on Intelligent Decision Technologies (IDT'10)</p> <p>Important dates 2 March 2010: *Deadline for full paper submission 22 March 2010: *Notification of acceptance 19 April 2010: *Deadline for Camera Ready Papers For further information or questions, please send an e-mail to: Beniamino Murgante (University of Basilicata, Italy) or idt-10@kesinternational.org</p>
August 2010		
9 – 12 August “NEW”	Kyoto, Japan	<p>ISPRS Commission VIII symposium International Society for Photogrammetry and Remote Sensing Contact: (Ms. Kumiko Sekiguchi, Ms. Juri Hikiba)</p>
23 August – 1 September “NEW”	Bangkok, Thailand	<p>Call for Applications: Workshop on Asian Coastal Cities The Southeast Asia START Regional Center and the East-West Center have issued a Call for Applications for an upcoming International Workshop to address the risks of flooding in Asian Megacities. With support from the Asia-Pacific Network for Global Change Research (APN) the Workshop on Climate Change Vulnerability Assessment and Urban Development Planning for Asian Coastal Cities will be held on August 23 to September 1. The Workshop objectives include:</p> <ol style="list-style-type: none"> 1) The development of capacity on the part of urban planners, managers, and researchers in climate change risk and vulnerability assessment and its application to urban development planning and governance. 2) The promotion of locally led risk and vulnerability research in Asian coastal cities that is linked to user needs. 3) The development of partnerships between researchers, planners, and policy makers that encourage communities of knowledge for vulnerability assessment in each participating city. <p>The Workshop invites researchers, urban planners and managers, practitioners, professionals and policymakers interested in and working on topics related to the workshop topics to submit an Application to the Southeast Asia Regional Center by 1 March 2010.</p> <p>The Application must include: A curriculum vitae for each applicant A written letter of interest describing the relevance of the workshop to the applicant/team's academic or professional work and</p>

[Back to contents](#)

		<p>expected benefits of participation All materials should be submitted in English For more information, review the Call for Applications or contact..</p>
September 2010		
1-3 September	Paris	<p>PCV2010 PCV 2010 will be held in next year. It is an ISPRS selective conference covering all the aspects of computer vision and image analysis dealing with geographic data. PCV focuses on the processing of images and 3D point clouds, acquired from satellites, aircraft or from street level acquisition systems. Important dates: 1 March, 2010: for peer reviewed papers; 1 April: abstracts of non peer-reviewed papers. 31 August is tutorial day. Conference dates are 1-3 September, 2010. Website</p>
6-9 September “NEW”	Barcelona, Spain	<p>FOSS4G 2010 1 Feb 2010, Call for Abstracts opens 16 Feb 2010, Notification of acceptance for workshops/tutorials 22 Feb 2010, Registration for workshop and tutorials opens 1 May 2010, Abstract submission deadline 1 Jun 2010, Presenters notified of acceptance for talks 15 Jun 2010, Author/Early registration deadline Aug 2010, Completed program available 6-7 Sep 2010, FOSS4G Workshops 7-9 Sep 2010, FOSS4G Presentations and Tutorials 10 Sep 2010, FOSS4G Code Sprint Contact Conference Chair for further details (Lorenzo Becchi)</p>
22–6 September “NEW:”	Toyama, Japan	<p>Asia-Pacific Radio Science Conference 2010 (AP-RASC10) Contact</p>
October 2010		
18 – 22 October “UPDATED”	Singapore	<p>GSDI 12 World Conference – Realising Spatially Enabled Societies In conjunction with the 16th PCGIAP Annual Meeting. Call for Papers Abstract Deadline: 1 April 2010 Book Chapter Submission Deadline: 15 March 2010 ALSO: there will be a full day pre-conference workshop for PhD students pursuing research on SDI related topics which will be similar to the highly successful workshop held in conjunction with GSDI 11.</p>
25-29 October “NEW”	Addis Ababa, Ethiopia	<p>8th International Conference of the African Association of Remote Sensing of the Environment (AARSE)-2010 Theme: Earth Observation for Africa's Development Agenda 2010 Abstract deadline: 30 April 2010. Send to Final paper submission: 1 September 2010. The four major scientific sub-themes of the conference are:</p> <ul style="list-style-type: none"> • Food and Water Security • Energy Resources • Disaster Risk Reduction • Marine and Coastal Management <p>Conference sub-themes of a more operational nature are:</p> <ul style="list-style-type: none"> • Capacity-building: achievement and challenges • Spatial Data Infrastructure, SDI • Space Policy in Africa • National and regional programs and projects • Products

November 2010		
31 October - 3 November "NEW:"	Denver, Colorado	US - GSA Annual Meeting
5 – 6 November "UPDATED"	Kaohsiung, Taipei	ASIA GIS 2010 Contact us The theme for this conference is GIS and Cloud Computing . Cloud computing is the hottest topic in 2010 and GIS is moving to the cloud computing paradigm. Invited keynote speakers will present the future trend of cloud computing and its application in GIS. Key Dates: Deadline for Paper Abstracts 30 April Acceptance of Paper Abstracts 31 May Deadline for Early Bird Registration 31 August Paper Submission 31 August
8 – 11 November	London	The 5th International Conference for Internet Technology and Secured Transactions (ICITST-2010) Technical Co-Sponsored by IEEE UK/RI Communications Chapter, Contact IMPORTANT DATES Full Paper Submission: May 31, 2010? Extended Abstract (Work in Progress) Submission: April 01, 2010 Proposal for Workshops and Tutorials: April 30, 2010? Notification of Workshop and Tutorial Acceptance: March 15, 2010 Proposal for Industrial Presentation: April 30, 2010 Early Registration Deadline: January 01 to July 31, 2010 Late Registration Deadline: July 31 to November 08, 2010
December 2010		
22 December "NEW"	Kyoto, Japan	Japan - Topic Maps Japan 2010 Topic Maps enthusiasts in Japan will gather together for this symposium. They will present the latest case studies, research, etc. They will discuss about identification of Subject/Knowledge/Information, classification, systematization, exchange/share of them, improving their findability with audience. They will also discuss effective utilization, new way of use. And they will aim at the spread, development and promotion of Topic Maps in Japan

[Back to contents](#)

To subscribe to SDI-AP, please do so [online](#). To contact please [email](#) the editors.
[Global Spatial Data Infrastructure Association](#).

Please mention SDI-AP as a source of information in correspondence you may have about items in this issue.

DISCLAIMER: The Editor and Web Host will not be held liable for any errors, mistakes, misprints or incorrect information.

Copyright © 2009. All rights reserved.



[Back to contents](#)